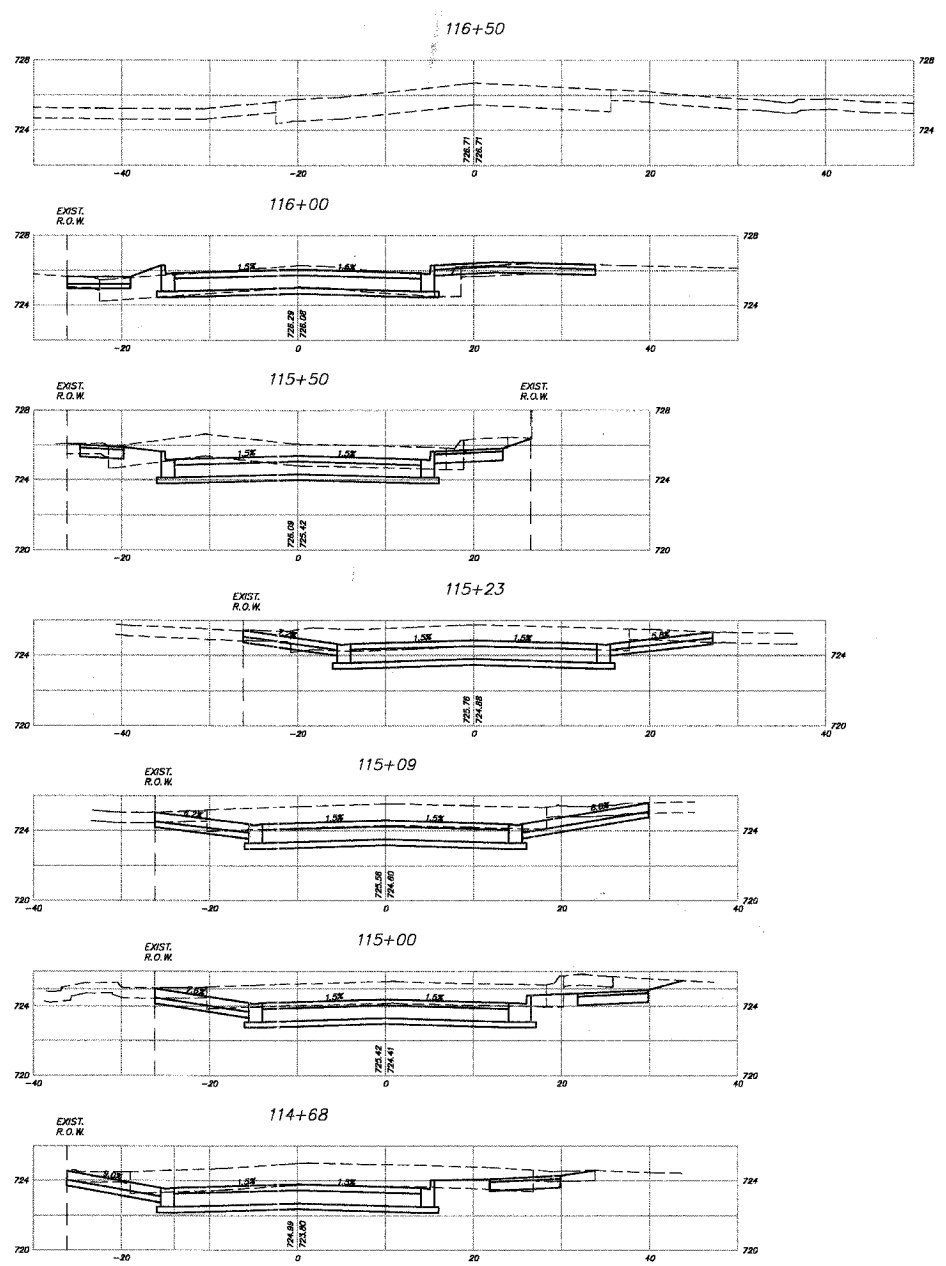
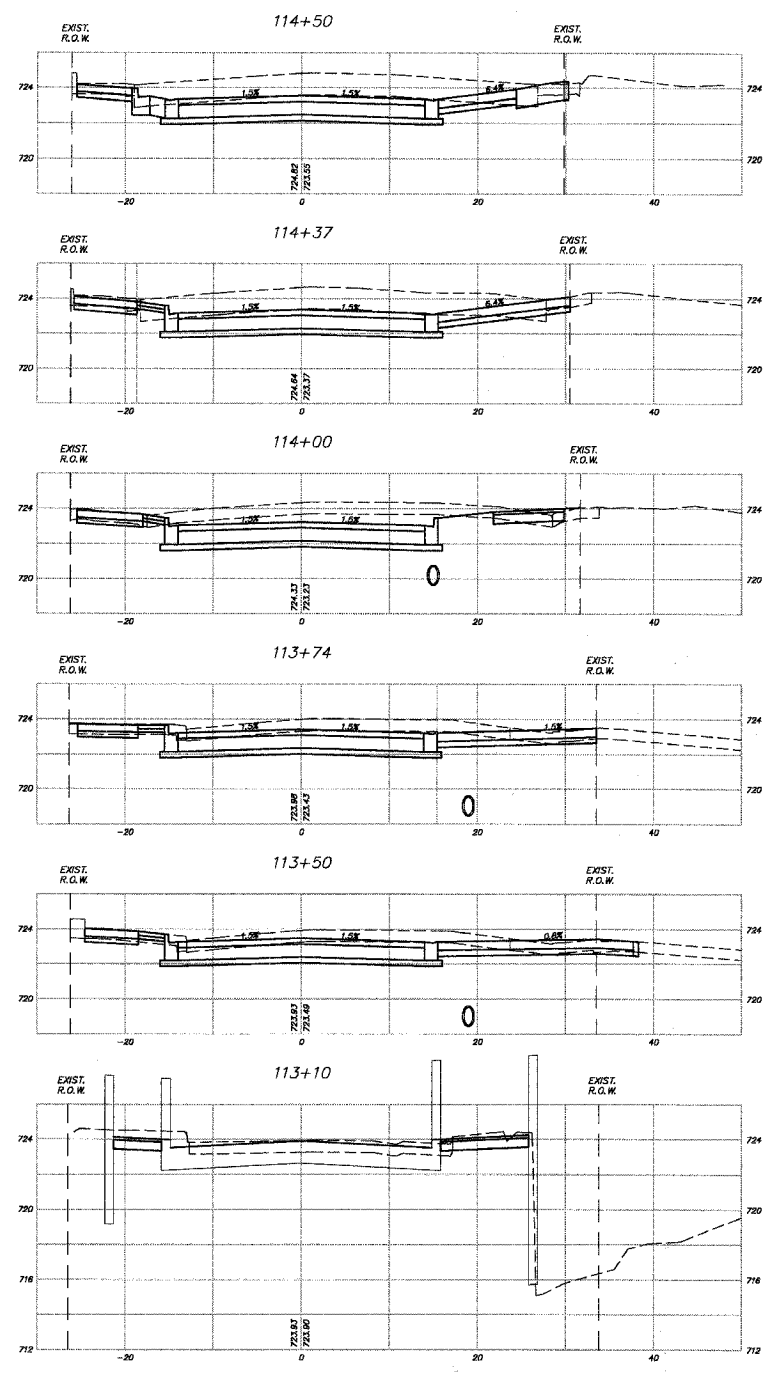


F.A. ROUTE	SECTION	COUNTY	TOTAL SHEETS	SHEET NO.
1283	02-00059-00-BR	KANE	51	51
STA. 113+10		TO STA. 116+50		
FED. ROAD DIST.	ILLINOIS	HIGHWAY PROJECT		

CONTRACT # 83783



VIEW: C1-51
 PLOT FILE: STANDARD
 COMP. FILE: P-section.dwg

REVISIONS	
1	
2	
3	
4	
5	
6	
7	
8	

SMITH ENGINEERING CONSULTANTS, INC.
 CIVIL/STRUCTURAL ENGINEERS AND SURVEYORS
 4500 PRIME PARKWAY, SUITE 201
 McHENRY, ILLINOIS 60050
 PH: 815-350-1770 FAX: 815-350-1781
 www.smithengineering.com E-MAIL: seo@smithengineering.com
 ILLINOIS PROFESSIONAL DESIGN FIRM # 184-000108

ILLINOIS DEPARTMENT OF TRANSPORTATION

VILLAGE OF CARPENTERSVILLE
 MAIN STREET OVER THE FOX RIVER
 CROSS SECTIONS

SCALE: VERT. 1"=5'
 HORIZ. 1"=10'
 DATE: 02-25-2005
 DRAWN BY: WJH
 CHECKED BY: TEH