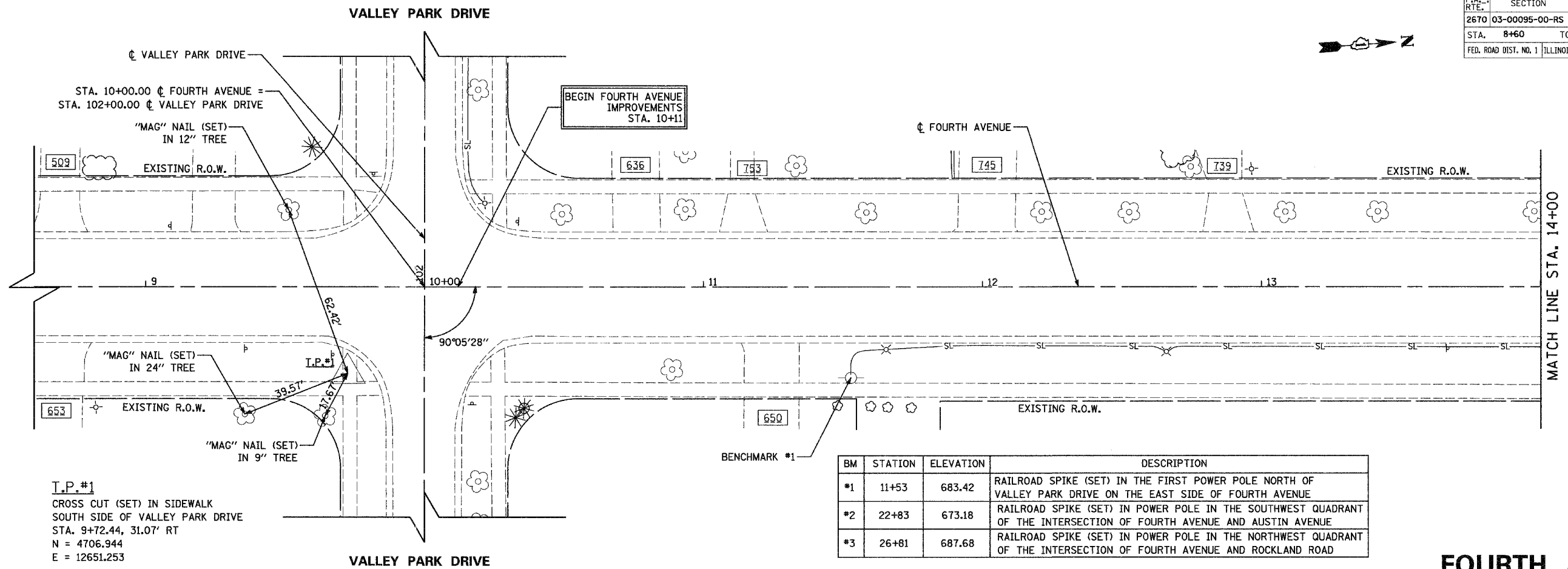


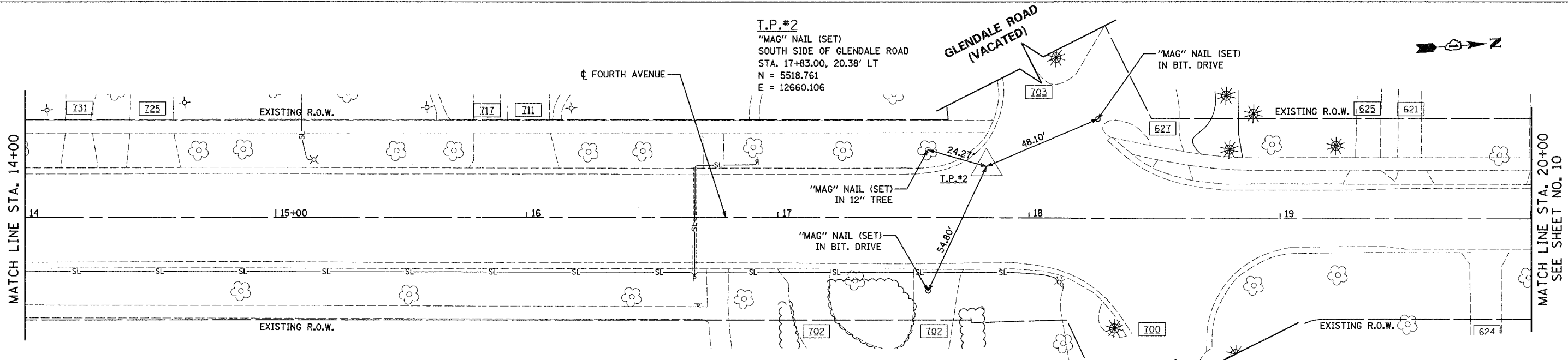
F.A. RTE.	SECTION	COUNTY	TOTAL SHEETS	SHEET NO.
2670	03-00095-00-RS	LAKE	67	9
STA. 8+60	TO STA. 20+00			
FED. ROAD DIST. NO. 1	ILLINOIS	STPM - 8003 (442)		
CONTRACT NO.: 83784				



BM	STATION	ELEVATION	DESCRIPTION
*1	11+53	683.42	RAILROAD SPIKE (SET) IN THE FIRST POWER POLE NORTH OF VALLEY PARK DRIVE ON THE EAST SIDE OF FOURTH AVENUE
*2	22+83	673.18	RAILROAD SPIKE (SET) IN POWER POLE IN THE SOUTHWEST QUADRANT OF THE INTERSECTION OF FOURTH AVENUE AND AUSTIN AVENUE
*3	26+81	687.68	RAILROAD SPIKE (SET) IN POWER POLE IN THE NORTHWEST QUADRANT OF THE INTERSECTION OF FOURTH AVENUE AND ROCKLAND ROAD

T.P.#1
 CROSS CUT (SET) IN SIDEWALK
 SOUTH SIDE OF VALLEY PARK DRIVE
 STA. 9+72.44, 31.07' RT
 N = 4706.944
 E = 12651.253

FOURTH AVENUE



T.P.#2
 'MAG' NAIL (SET)
 SOUTH SIDE OF GLENDALE ROAD
 STA. 17+83.00, 20.38' LT
 N = 5518.761
 E = 12660.106

PROJECT COORDINATES
 PROPOSED FOURTH AVENUE C

STATION	NORTHING	EASTING
10+11.00	4746.834	12623.591
17+72.54	5506.185	12681.080
18+49.04	5582.415	12687.468
26+16.81	6348.015	12745.118
26+82.83	6413.873	12749.811
42+34.74	7961.350	12866.906
42+35.00	7961.614	12866.924

REVISIONS	
NAME	DATE

Clorba Group, Inc.
 CONSULTING ENGINEERS
 3507 North Cumberland Avenue, Suite 402 Chicago, Illinois 60658
 Tel. 773.775.4008 Fax 773.775.4014 Email: chicago@clorba.com

VILLAGE OF LIBERTYVILLE
 FOURTH AVENUE IMPROVEMENTS
 FOURTH AVENUE
 ALIGNMENT, TIES, & BENCHMARKS
 STA. 8+60 TO STA. 20+00

SCALE: 1"=20'
 DATE: JANUARY, 2005
 DRAWN BY: KDM
 CHECKED BY: MJL/MRJ

FOURTH AVENUE