

F.A.U. RTE.	SECTION	COUNTY	TOTAL SHEETS	SHEET NO.
2758	02-00025-00 BR	LAKE	40	1
FED. ROAD DIST. NO.		ILLINOIS	FED. AID PROJECT	
CONTRACT NO. 83790				

**INDEX OF SHEETS**

FOR INDEX OF SHEETS, SEE SHEET NO. 2

PROJECT LOCATED IN VILLAGE OF LAKE BLUFF

**DESIGN DESIGNATION**

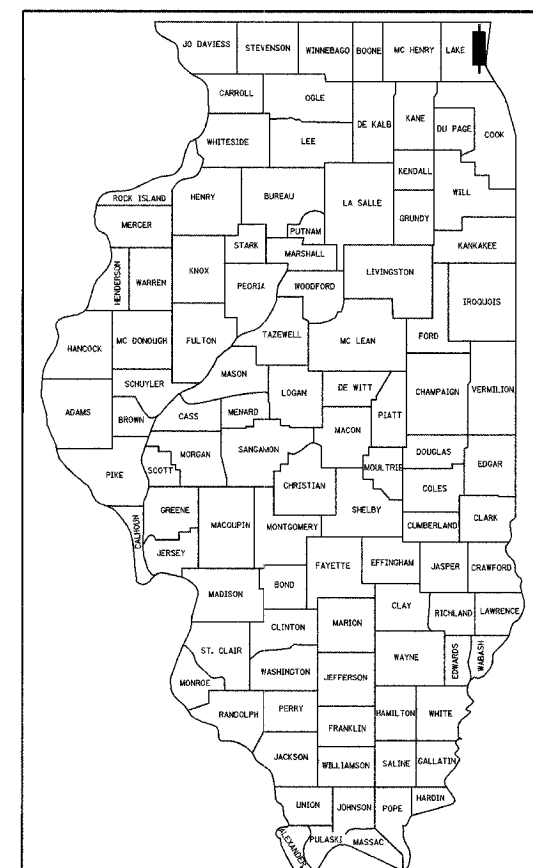
MOFFETT ROAD	ADT (2003)	POSTED SPEED	DESIGN SPEED
	1700	25 MPH	25 MPH
	ADT (2030)		
	3000		

**PROPOSED IMPROVEMENT**

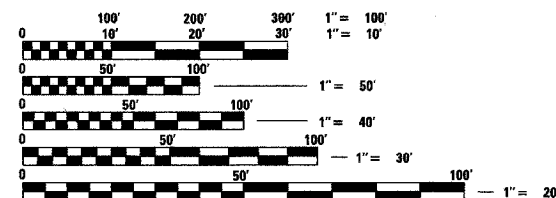
THE PROJECT INVOLVES THE RECONSTRUCTION OF SN 049-6801 MOFFETT ROAD BRIDGE

STATE OF ILLINOIS  
DEPARTMENT OF TRANSPORTATION  
DIVISION OF HIGHWAYS  
**PLANS FOR PROPOSED  
LOCAL AGENCY IMPROVEMENT**

FAU ROUTE 2758 (MOFFETT ROAD)  
OVER DRAINAGE RAVINE  
VILLAGE OF LAKE BLUFF  
SECTION 02-00025-00-BR  
PROJECT NO.: BRM-8003 (182)  
BRIDGE REPLACEMENT  
LAKE COUNTY  
JOB NO: C-91-079-02



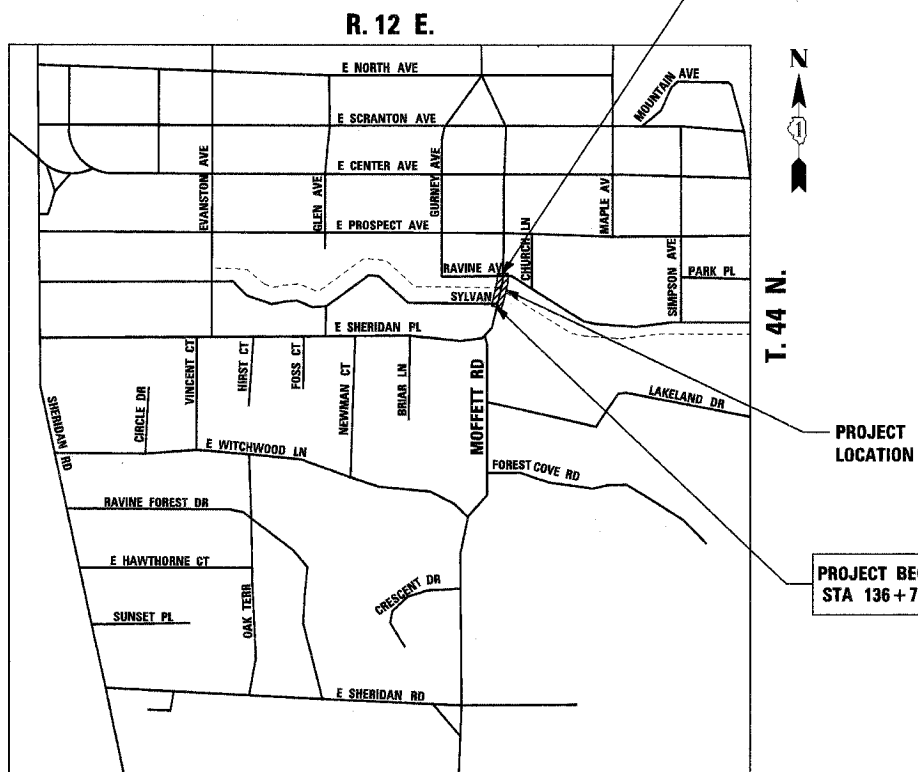
LOCATION OF SECTION INDICATED THUS: - [Symbol] -



FULL SIZE PLANS HAVE BEEN PREPARED USING STANDARD ENGINEERING SCALES, REDUCED SIZED PLANS WILL NOT CONFORM TO STANDARD SCALES. IN MAKING MEASUREMENTS ON REDUCED PLANS, THE ABOVE SCALES MAY BE USED.

J.U.L.I.E.  
JOINT UTILITY LOCATION INFORMATION FOR EXCAVATION  
1-800-892-0123

**CONTRACT NO. 83790**



PROJECT ENDS  
STA 139+20.00

PROJECT LOCATION

PROJECT BEGINS  
STA 136+75.00

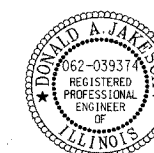
NOT TO SCALE  
LAKE BLUFF TOWNSHIP  
GROSS LENGTH OF PROJECT = 245 FT. = 0.05 MI.  
NET LENGTH OF PROJECT = 245 FT. = 0.05 MI.

STATE OF ILLINOIS  
DEPARTMENT OF TRANSPORTATION  
DIVISION OF HIGHWAYS

APPROVED February 18, 20 05  
Ben S. Zell  
VILLAGE OF LAKE BLUFF

APPROVED February 24, 20 05  
Robert J. [Signature]  
BUREAU CHIEF OF LOCAL ROADS AND STREETS

APPROVED February 24, 20 05  
Dina O'Keefe  
DISTRICT ENGINEER



Signed Donald A. Jakesch  
Donald A. Jakesch, P.E., Ill. Lic. No. 062-039374  
Expires 11-30-2005  
Date 02-11-05

PRINTED BY THE AUTHORITY OF THE STATE OF ILLINOIS

PREPARED BY: T.Y. LIN INTERNATIONAL, INC. DISTRICT ONE FEDERAL AID PROGRAM ENGINEER CHARLES F. RIDDLE (847) 705-4406