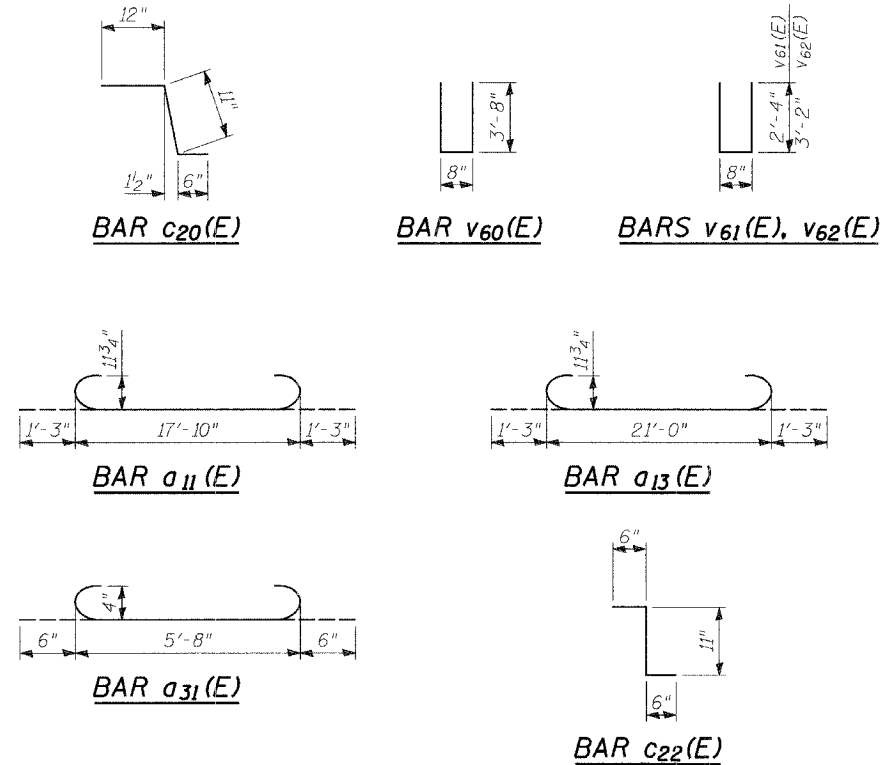


STATE OF ILLINOIS
DEPARTMENT OF TRANSPORTATION

ROUTE NO.	SECTION	COUNTY	TOTAL SHEETS	SHEET NO.	SHEET NO. -25 30 - SHEETS CONTRACT 83790
2758	*	LAKE	40	35	
FED. ROAD DIST. NO.	ILLINOIS	FED. AID PROJECT	• 02-00025-00-BR		



**NORTH APPROACH
BILL OF MATERIAL**

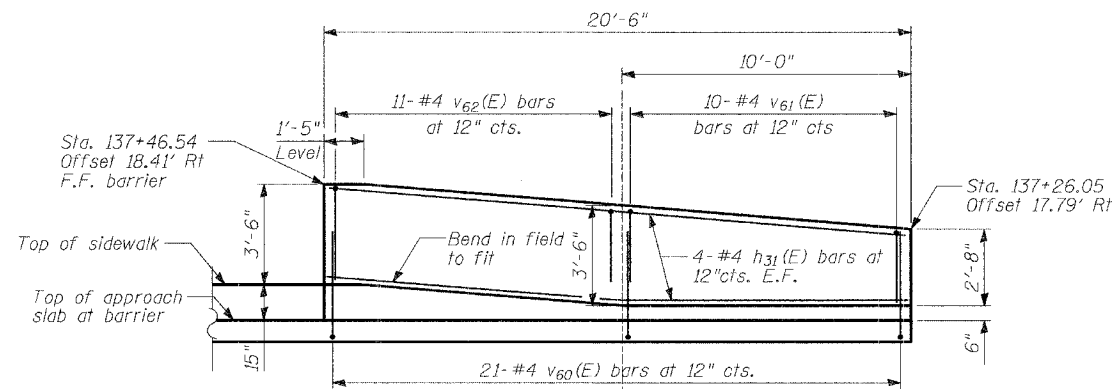
Bar	No.	Size	Length	Shape
a ₁₀ (E)	41	#5	20'-9"	—
a ₁₁ (E)	81	#9	20'-4"	⌢
a ₃₀ (E)	41	#4	5'-8"	—
a ₃₁ (E)	41	#4	6'-8"	⌢
b ₁₀ (E)	7	#4	17'-7"	—
b ₁₁ (E)	7	#4	23'-7"	—
b ₁₂ (E)	22	#5	17'-7"	—
b ₁₃ (E)	22	#5	23'-7"	—
b ₂₀ (E)	8	#5	13'-4"	—
b ₂₁ (E)	8	#5	8'-3"	—
c ₂₀ (E)	21	#5	2'-5"	⌢
c ₂₁ (E)	21	#5	6'-8"	—
c ₂₂ (E)	21	#5	1'-11"	⌢
h ₃₂ (E)	24	#5	31'-8"	—
h ₃₃ (E)	24	#5	17'-1"	—
Reinforcement Bars, Epoxy Coated		POUND	9610	
Bridge Approach Pavement (Special)		SQ YD	94	

The volume of concrete for the sidewalk area is 5.7 CU YD.

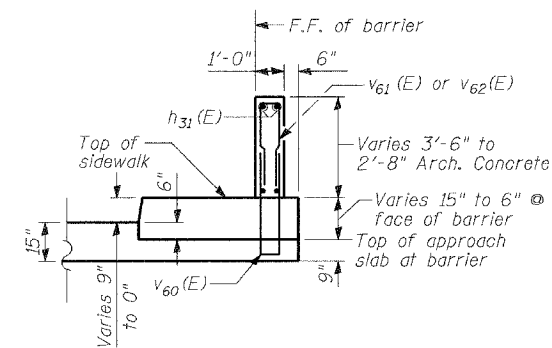
**SOUTH APPROACH
BILL OF MATERIAL**

Bar	No.	Size	Length	Shape
a ₁₂ (E)	41	#5	23'-11"	—
a ₁₃ (E)	81	#9	23'-6"	⌢
a ₃₀ (E)	40	#4	5'-8"	—
a ₃₁ (E)	40	#4	6'-8"	⌢
b ₁₀ (E)	7	#4	17'-7"	—
b ₁₁ (E)	7	#4	23'-7"	—
b ₁₂ (E)	25	#5	17'-7"	—
b ₁₃ (E)	25	#5	23'-7"	—
b ₂₂ (E)	8	#5	13'-9"	—
b ₂₃ (E)	8	#5	13'-0"	—
c ₂₀ (E)	27	#5	2'-5"	⌢
c ₂₁ (E)	27	#5	6'-8"	—
c ₂₂ (E)	27	#5	1'-11"	⌢
h ₃₀ (E)	24	#5	38'-6"	—
h ₃₁ (E)	24	#4	20'-6"	—
v ₆₀ (E)	21	#4	8'-0"	⌢
v ₆₁ (E)	10	#4	5'-4"	⌢
v ₆₂ (E)	11	#4	7'-0"	⌢
Architectural Concrete		CU YD	2.4	
Reinforcement Bars, Epoxy Coated		POUND	11300	
Bridge Approach Pavement (Special)		SQ YD	108	

The volume of concrete for the sidewalk area is 9.3 CU YD.



**SOUTHEAST SIDEWALK
BARRIER WALL**
Offsets are to wall F.F.



**SECTION THRU SOUTHEAST
SIDEWALK AT BARRIER WALL**

Note:
Minimum lap for #4 bars shall be 1'-8"

NOTES

Reinforcement Bars designated (E) shall be Epoxy Coated.

Reinforcement Bars in the above tables are included in the unit price for Bridge Approach Pavement (Special). See Special Provisions.

APPROACH PAVEMENT DETAILS

MOFFETT ROAD OVER
DRAINAGE RAVINE
FAU 2758
LAKE COUNTY
S.N. 049-6803

TYLIN INTERNATIONAL

DESIGNED	- CM,DE
CHECKED	- SP
DRAWN	- CM,DE
CHECKED	- PF

DATE: 02-23-2005

13/01/05 10:31:05 AM