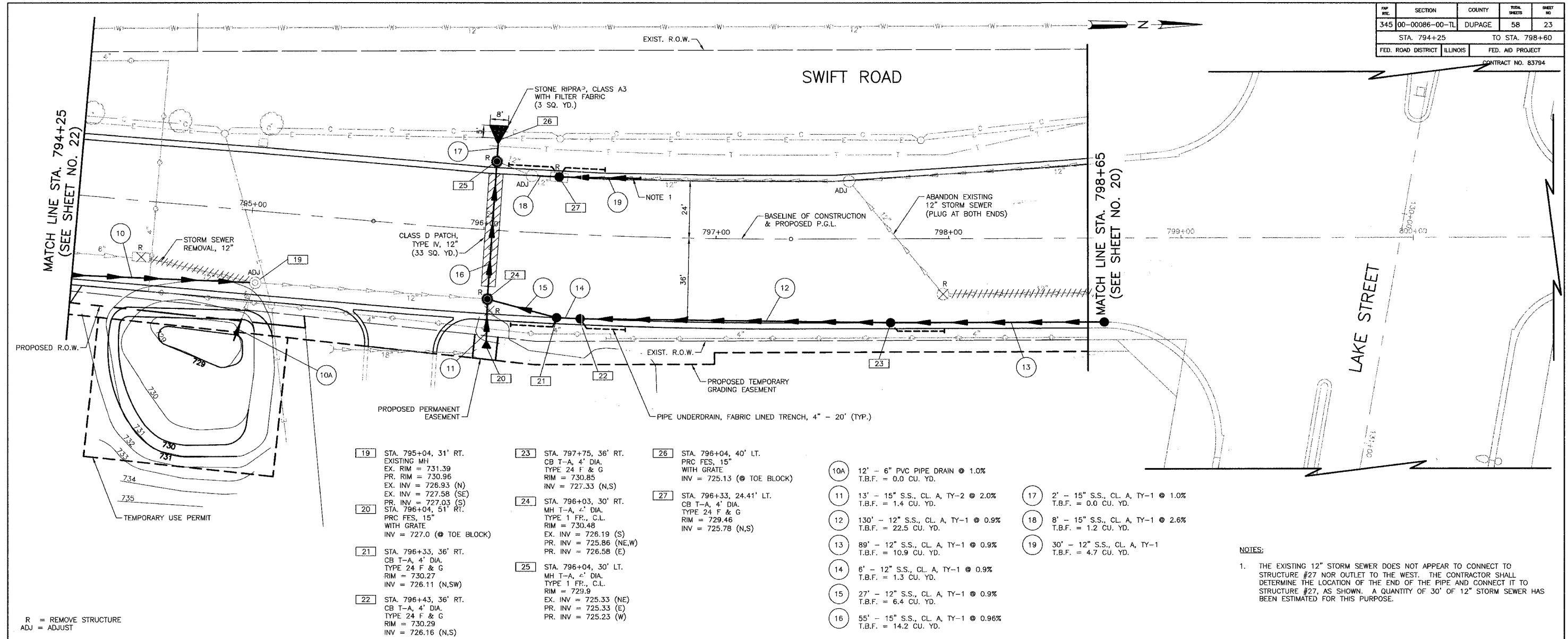


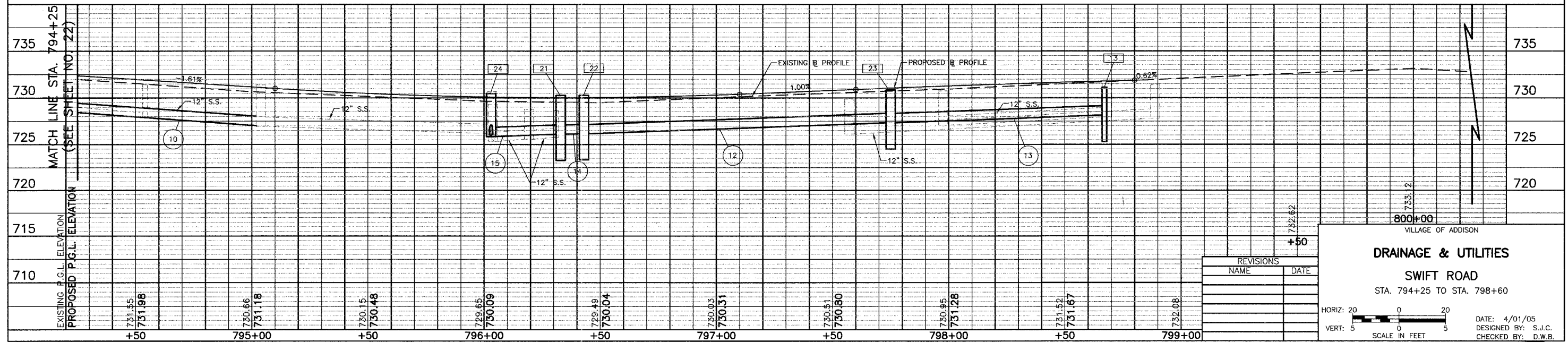
SECTION	COUNTY	TOTAL SHEETS	SHEET NO.
345 00-00086-00-TL	DUPAGE	58	23
STA. 794+25 TO STA. 798+60		FED. AID PROJECT	
FED. ROAD DISTRICT ILLINOIS		CONTRACT NO. 83794	



- 19 STA. 795+04, 31' RT. EXISTING MH. EX. RIM = 731.39 PR. RIM = 730.96 EX. INV = 726.93 (N) EX. INV = 727.58 (SE) STA. 796+04, 51' RT. PRC FES, 15" WITH GRATE INV = 727.0 (TOE BLOCK)
- 20 STA. 796+33, 36' RT. CB T-A, 4' DIA. TYPE 24 F & G RIM = 730.27 INV = 726.11 (N,SW)
- 21 STA. 796+43, 36' RT. CB T-A, 4' DIA. TYPE 24 F & G RIM = 730.29 INV = 726.16 (N,S)
- 22 STA. 796+04, 30' LT. MH T-A, 4' DIA. TYPE 1 FR., C.L. RIM = 729.9 EX. INV = 725.33 (NE) PR. INV = 725.23 (E)
- 23 STA. 797+75, 36' RT. CB T-A, 4' DIA. TYPE 24 F & G RIM = 730.85 INV = 727.33 (N,S)
- 24 STA. 796+03, 30' RT. MH T-A, 4' DIA. TYPE 1 FR., C.L. RIM = 730.48 EX. INV = 726.19 (S) PR. INV = 725.86 (NE,W) PR. INV = 726.58 (E)
- 25 STA. 796+04, 30' LT. MH T-A, 4' DIA. TYPE 1 FR., C.L. RIM = 729.9 EX. INV = 725.33 (NE) PR. INV = 725.23 (W)
- 26 STA. 796+04, 40' LT. PRC FES, 15" WITH GRATE INV = 725.13 (TOE BLOCK)
- 27 STA. 796+33, 24.41' LT. CB T-A, 4' DIA. TYPE 24 F & G RIM = 729.46 INV = 725.78 (N,S)
- 10A 12' - 6" PVC PIPE DRAIN @ 1.0% T.B.F. = 0.0 CU. YD.
- 11 13' - 15" S.S., CL. A, TY-2 @ 2.0% T.B.F. = 1.4 CU. YD.
- 12 130' - 12" S.S., CL. A, TY-1 @ 0.9% T.B.F. = 22.5 CU. YD.
- 13 89' - 12" S.S., CL. A, TY-1 @ 0.9% T.B.F. = 10.9 CU. YD.
- 14 6' - 12" S.S., CL. A, TY-1 @ 0.9% T.B.F. = 1.3 CU. YD.
- 15 27' - 12" S.S., CL. A, TY-1 @ 0.9% T.B.F. = 6.4 CU. YD.
- 16 55' - 15" S.S., CL. A, TY-1 @ 0.96% T.B.F. = 14.2 CU. YD.
- 17 2' - 15" S.S., CL. A, TY-1 @ 1.0% T.B.F. = 0.0 CU. YD.
- 18 8' - 15" S.S., CL. A, TY-1 @ 2.6% T.B.F. = 1.2 CU. YD.
- 19 30' - 12" S.S., CL. A, TY-1 T.B.F. = 4.7 CU. YD.

NOTES:  
 1. THE EXISTING 12" STORM SEWER DOES NOT APPEAR TO CONNECT TO STRUCTURE #27 NOR OUTLET TO THE WEST. THE CONTRACTOR SHALL DETERMINE THE LOCATION OF THE END OF THE PIPE AND CONNECT IT TO STRUCTURE #27, AS SHOWN. A QUANTITY OF 30' OF 12" STORM SEWER HAS BEEN ESTIMATED FOR THIS PURPOSE.

R = REMOVE STRUCTURE  
 ADJ = ADJUST



REVISIONS	
NAME	DATE

VILLAGE OF ADDISON

**DRAINAGE & UTILITIES**

**SWIFT ROAD**

STA. 794+25 TO STA. 798+60

HORIZ: 20  
 VERT: 5

SCALE IN FEET

DATE: 4/01/05  
 DESIGNED BY: S.J.C.  
 CHECKED BY: D.W.B.

