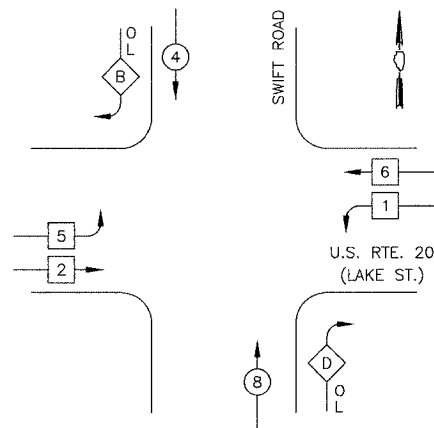


FAR. NO.	SECTION	COUNTY	TOTAL SHEETS	SHEET NO.
545	00-00086-00-TL	DUPAGE	58	26
STA.	TO STA.			
FED. ROAD DISTRICT	ILLINOIS	FED. AID PROJECT		
CONTRACT NO. 83794				

TEMPORARY CONTROLLER SEQUENCE



LEGEND

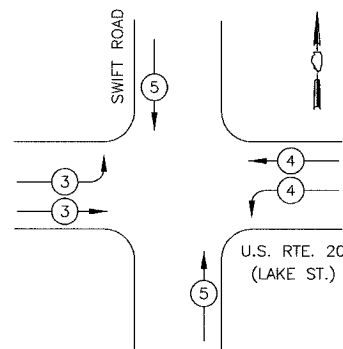
- DUAL ENTRY PHASE
- SINGLE ENTRY PHASE
- OVERLAP
- PEDESTRIAN MOVEMENT
- * NUMBER REFERS TO ASSOCIATED PHASE

PHASE DESIGNATION DIAGRAM

RIGHT TURN OVERLAP PHASE DESIGNATION

OVERLAP LETTER	=	PERMISSIVE PHASE	+	PROTECTED PHASE
B	=	4	+	5
D	=	8	+	1

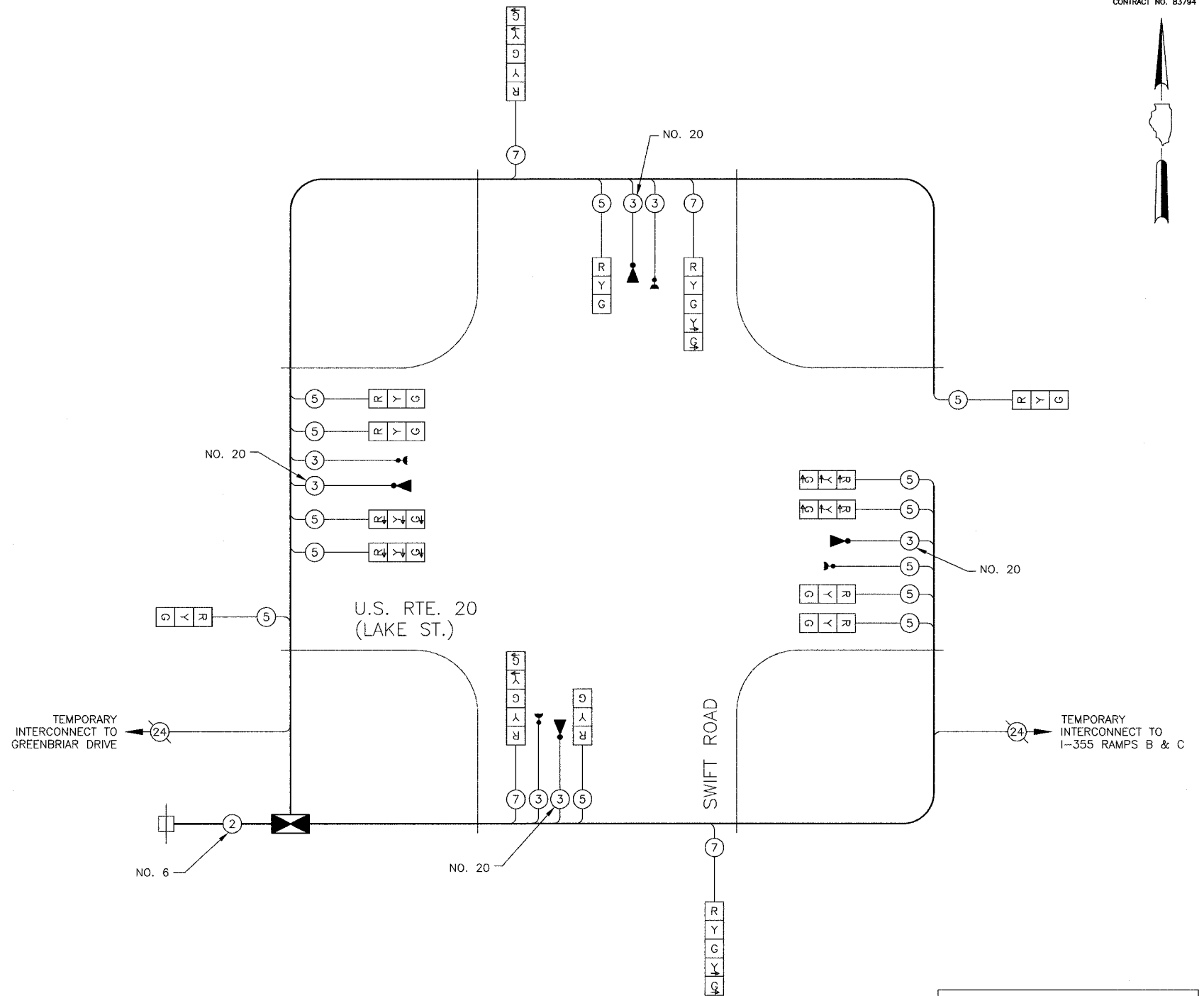
EMERGENCY VEHICLE PREEMPTION SEQUENCE



PROPOSED EMERGENCY VEHICLE PREEMPTORS			
EMERGENCY VEHICLE PREEMPTOR	3	4	5
MOVEMENT			

TEMPORARY CABLE PLAN LEGEND

- TEMPORARY TRAFFIC SIGNAL SECTION OR PEDESTRIAN SIGNAL SECTION 12" (300mm)
- CONTROLLER CABINET
- SERVICE INSTALLATION
- INDICATES NUMBER OF CONDUCTORS IN CABLE. ALL CONDUCTORS TO BE NUMBER 14 AWG WIRE UNLESS OTHERWISE NOTED
- CONFIRMATION BEACON
- EMERGENCY VEHICLE LIGHT DETECTOR
- VEHICLE DETECTOR, INDUCTION LOOP
- PEDESTRIAN PUSHBUTTON DETECTOR
- 12" (300mm) PEDESTRIAN SIGNAL SECTION



TEMPORARY CABLE PLAN
NOT TO SCALE

THE TRAFFIC SIGNAL CONTROL EQUIPMENT FOR THIS PROJECT SHALL BE "ECONOLITE" BRAND TO MATCH THE EXISTING ADJACENT SYSTEM.

I.D.O.T. TRAFFIC SIGNAL INSTALLATION ELECTRICAL SERVICE REQUIREMENTS				TOTAL WATTAGE
	NO. LAMPS	WATTAGE INCAND.	% OPERATION	
SIGNAL (RED)	16	135	0.50	1080
(YELLOW)	16	135	0.25	540
(GREEN)	16	135	0.25	540
ARROW	8	135	0.10	108
PED. SIGNAL		90	1.00	
CONTROLLER	1	100	1.00	100
FLASHER			50	
TOTAL =				2368

ENERGY COSTS TO: VILLAGE OF ADDISON
ONE FRIENDSHIP PLAZA
ADDISON, IL 60101-2786
CONTACT: JOE STACHO
PHONE: (630) 424-5704
COMPANY: COMMONWEALTH EDISON

ENERGY SUPPLY:

REVISIONS	
NAME	DATE

VILLAGE OF ADDISON TEMPORARY CABLE PLAN AND PHASE DESIGNATION DIAGRAM U.S. RTE. 20 (LAKE ST.) & SWIFT ROAD

SCALE: NOT TO SCALE
DATE: 4/1/2005

DRAWN BY: BRD
DESIGNED BY: BRD
CHECKED BY: KMM