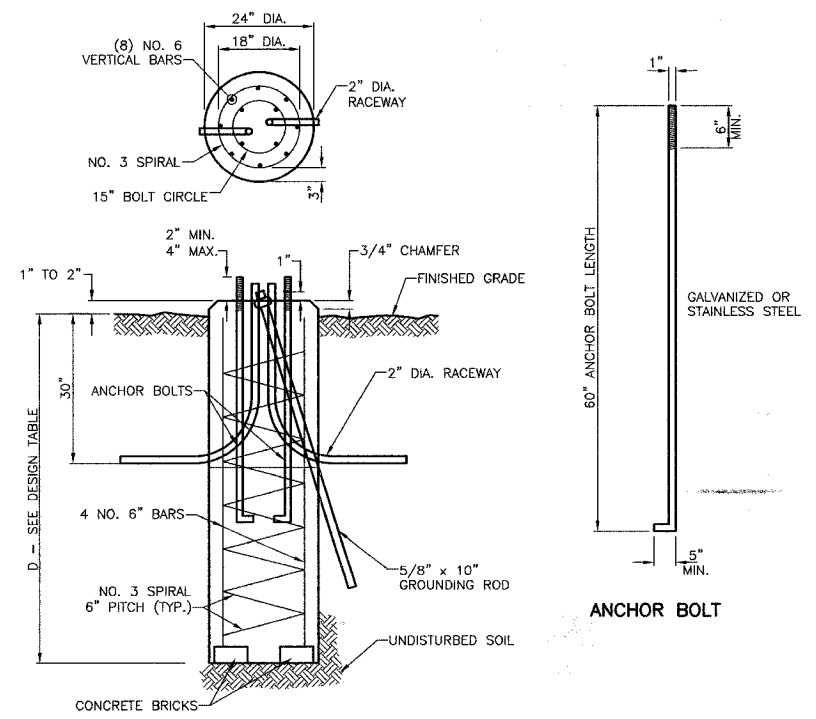


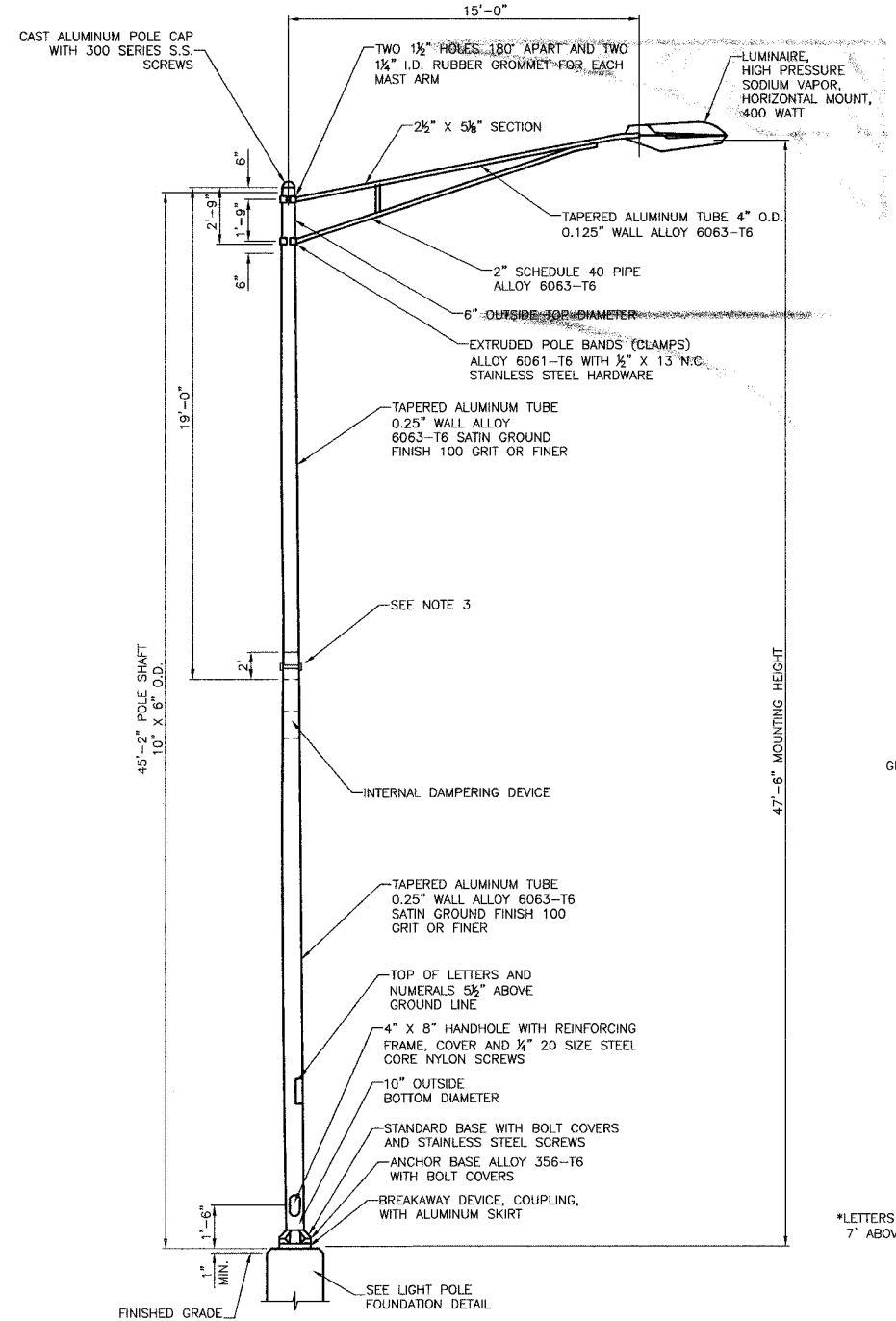
LIGHT POLE FOUNDATION, 24" DIAMETER, OFFSET



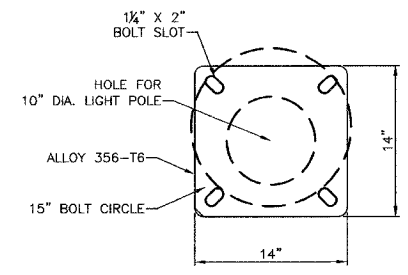
LIGHT POLE FOUNDATION

TYPE OF SOIL	SINGLE ARM D	SINGLE ARM VERT. BARS	SPIRAL
SOFT CLAY	13'-0"	8-#6X12'-6"	#3X122'
MEDIUM CLAY	9'-6"	8-#6X9'-0"	#3X90'
STIFF CLAY	8'-0"	8-#6X7'-6"	#3X76'
LOOSE SAND	9'-0"	8-#6X8'-6"	#3X85'
MEDIUM SAND	8'-3"	8-#6X7'-9"	#3X78'
DENSE SAND	8'-0"	8-#6X7'-6"	#3X76'

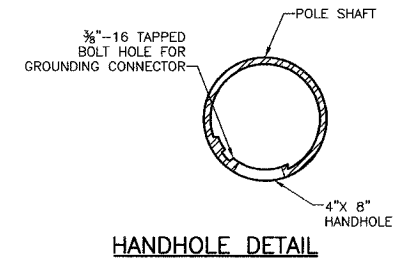
- NOTES:**
- THE ENGINEER SHALL DETERMINE THE CLASS OF SOIL DURING THE EXCAVATION AND SELECT THE DEPTH OF THE FOUNDATION FROM THE DESIGN TABLE.
 - EXCAVATION OF THE FOUNDATION SHALL BE MADE WITH A 24" DIAMETER AUGER.
 - THE CONTRACTOR SHALL USE A NO. 3 SPIRAL CAGE WITH A 6" PITCH, OR AT HIS OPTION, MAY SUBSTITUTE WITH NO. 3 HOOPS AT 12" ON CENTERS.
 - EACH ANCHOR BOLT SHALL BE FURNISHED WITH 2 FLAT WASHERS AND 2 HEX NUTS. THEY SHALL BE EITHER GALVANIZED OR STAINLESS STEEL TO MATCH THE ANCHOR BOLTS.
 - RACEWAYS SHALL BE INSTALLED PARALLEL TO THE EDGE OF PAVEMENT.
 - ANCHOR BOLTS, RACEWAYS, AND REINFORCING STEEL SHALL BE SECURED IN PLACE BEFORE THE CONCRETE IS PLACED IN THE FORM.
 - CONCRETE SHALL BE CLASS SI, WITH A MINIMUM STRENGTH OF 3500 PSI.
 - THE CONCRETE SHALL CURE FOR A MINIMUM OF 10 DAYS BEFORE ERECTING THE LIGHT POLE.
 - THE CABLE TRENCH SHALL BE BACKFILLED AND FIRMLY COMPACTED BEFORE ERECTING THE LIGHT POLE.
 - ANCHOR BOLTS SHALL PROJECT A MINIMUM OF 2" AND A MAXIMUM OF 4" ABOVE THE TOP OF THE FOUNDATION.
 - RACEWAYS SHALL PROJECT 1" ABOVE THE TOP OF THE FOUNDATION.
 - ALL GROUND ROD CONNECTIONS SHALL BE MADE ABOVE GRADE, INSIDE THE POLE BASE, WITH EXOTHERMIC OR INERT GAS WELDS.



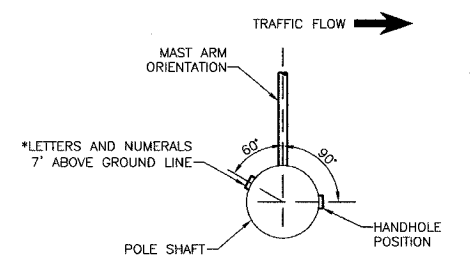
LIGHTING UNIT



LIGHT POLE BASE PLATE DETAIL
15 INCH BOLT CIRCLE



HANDHOLE DETAIL



POSITION OF HANDHOLE AND POLE NUMBER FOR SINGLE MAST ARM POLES

REVISIONS	
NAME	DATE

VILLAGE OF ADDISON
LIGHTING DETAIL
LAKE STREET/SWIFT ROAD

DATE: 4/01/05
DESIGNED BY: S.J.C.
CHECKED BY: D.N.M.