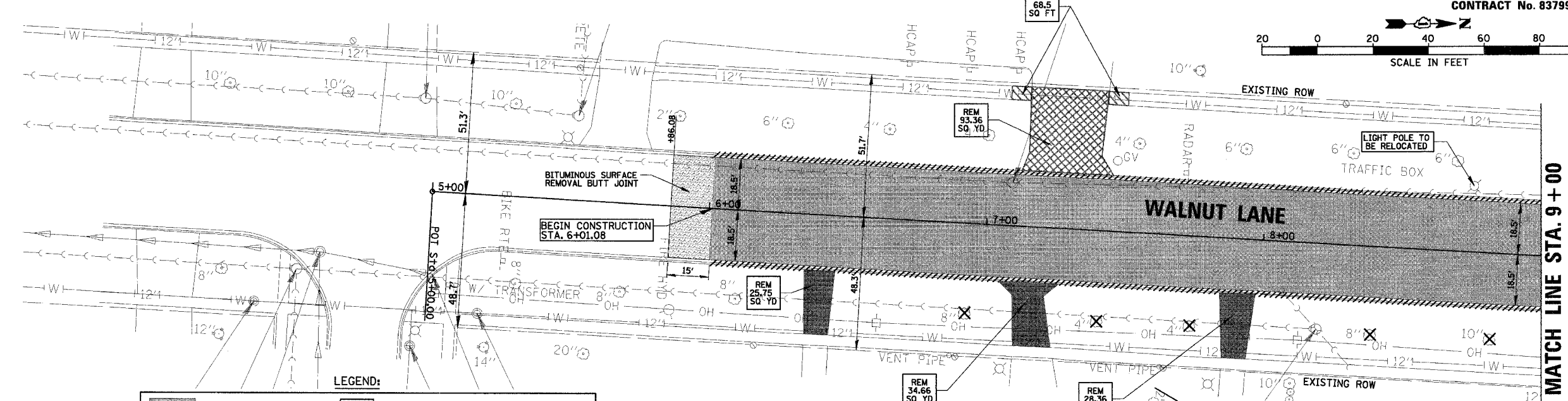
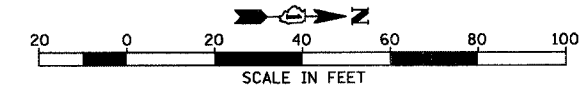


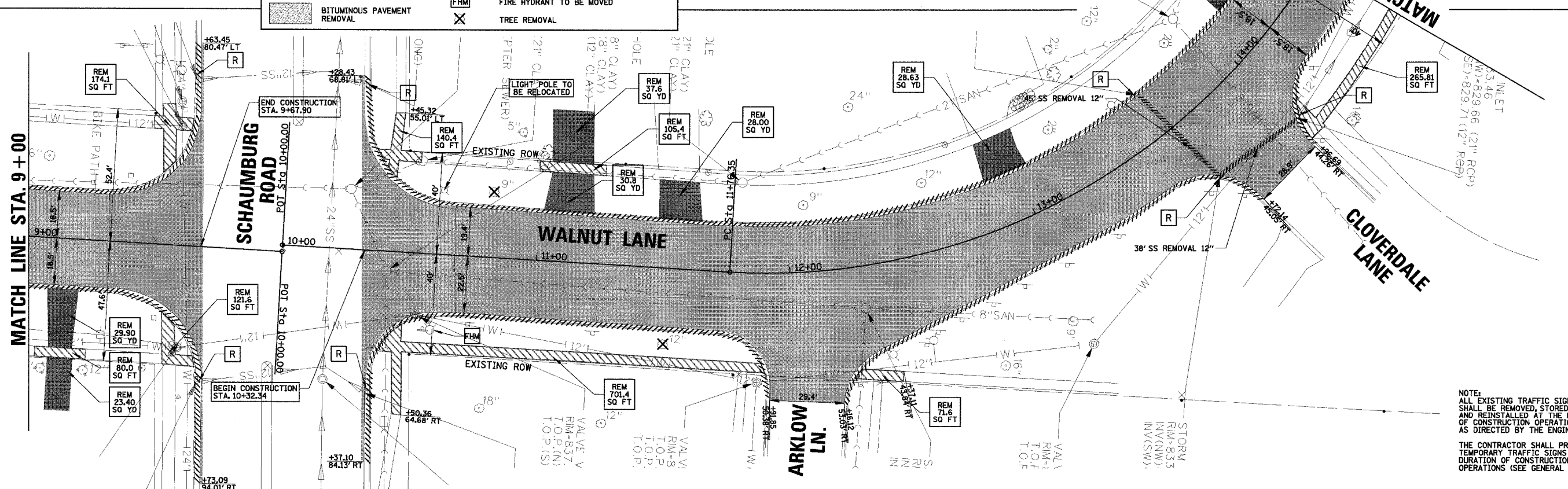
F.A.U. RTE.	SECTION	COUNTY	TOTAL SHEETS	SHEET NO.
2556	00-00070-00-FP	COOK	98	10
FED. ROAD DIST. NO. 1		ILLINOIS FED. AID PROJECT		

CONTRACT No. 83799



LEGEND:

[Pattern]	PAVEMENT REMOVAL	[Symbol]	DRIVEWAY PAVEMENT REMOVAL QUANTITY LABEL
[Pattern]	DRIVEWAY PAVEMENT REMOVAL (BITUMINOUS)	[Symbol]	STRUCTURE ADJUSTMENT (SEE P&P SHEETS)
[Pattern]	PCC SIDEWALK REMOVAL	[Symbol]	STRUCTURE REMOVAL
[Pattern]	DRIVEWAY PAVEMENT REMOVAL (PCC)	[Symbol]	COMBINATION CURB & GUTTER REMOVAL
[Pattern]	BITUMINOUS PAVEMENT REMOVAL	[Symbol]	STORM SEWER OR CULVERT REMOVAL
[Symbol]		[Symbol]	FIRE HYDRANT TO BE MOVED
[Symbol]		[Symbol]	TREE REMOVAL



NOTE:
ALL EXISTING TRAFFIC SIGNS SHALL BE REMOVED, STORED AND REINSTALLED AT THE END OF CONSTRUCTION OPERATIONS AS DIRECTED BY THE ENGINEER.
THE CONTRACTOR SHALL PROVIDE TEMPORARY TRAFFIC SIGNS FOR THE DURATION OF CONSTRUCTION OPERATIONS (SEE GENERAL NOTES)

CHRISTOPHER B. BURKE ENGINEERING LTD.
9575 West Higgins Road, Suite 600
Rosemont, Illinois 60018
(847) 823-0500

CLIENT: **VILLAGE OF SCHAUMBURG**
Engineering Department
101 Schaumburg Court
Schaumburg, IL. 60193-7806

NO.	DATE	NATURE OF REVISION	CHKD.
FILE NAME	N:\SCHAUMBURG\01-434\DESIGN\434_01.REM.REM		

DSGN. GS
DWN. GS
CHKD. JGS
SCALE: 1" = 20'
DATE: 04/05/2005

TITLE: **EXISTING CONDITIONS AND REMOVAL PLAN**
C-91-108-04

PROJECT NO. 01-434
SHEET 10 OF 98
DRAWING NO. 10