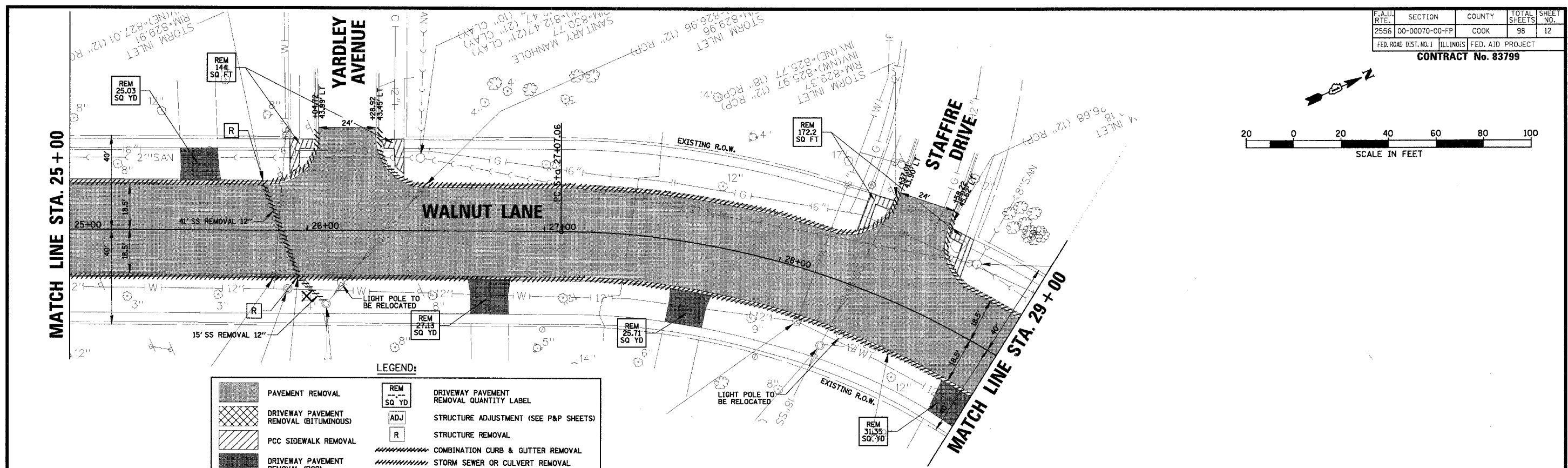
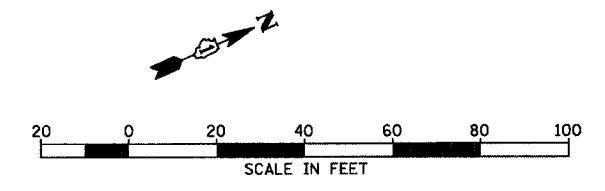


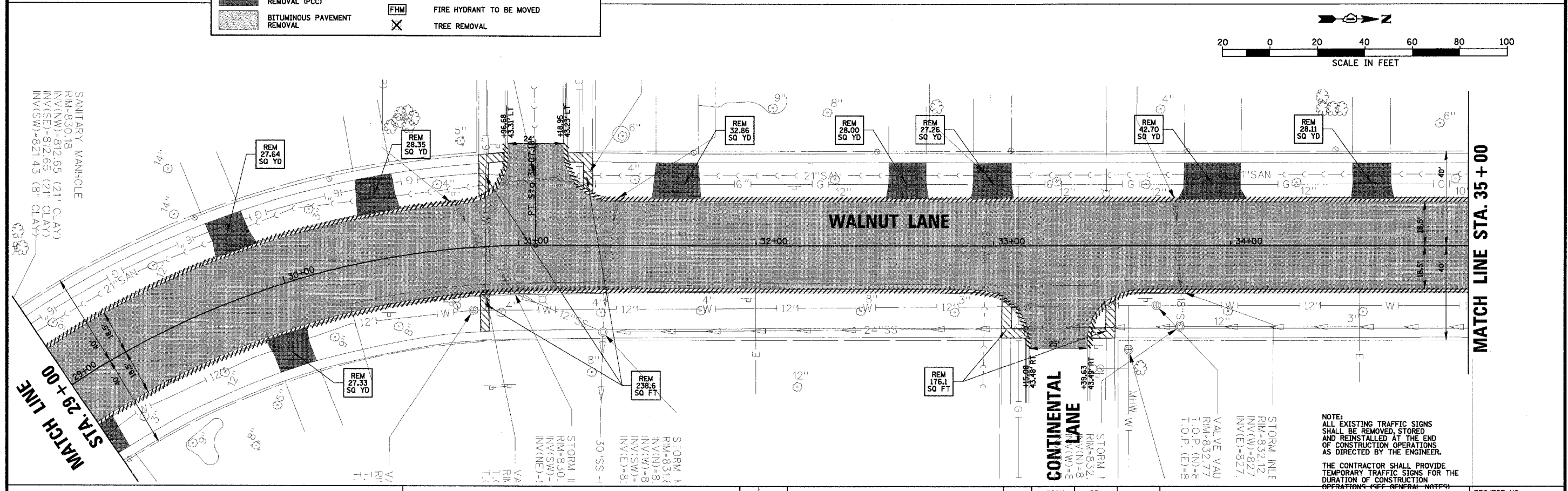
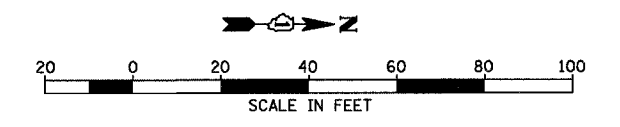
F.A.U. SECTION	COUNTY	TOTAL SHEET NO.
2556 00-00070-00-PP	COOK	96 12
FED. ROAD DIST. NO. 1	ILLINOIS	FED. AID PROJECT

CONTRACT No. 83799



LEGEND:

[Hatched Box]	PAVEMENT REMOVAL	[REM Box]	DRIVEWAY PAVEMENT REMOVAL QUANTITY LABEL
[Cross-hatched Box]	DRIVEWAY PAVEMENT REMOVAL (BITUMINOUS)	[ADJ Box]	STRUCTURE ADJUSTMENT (SEE P&P SHEETS)
[Diagonal Hatched Box]	PCC SIDEWALK REMOVAL	[R Box]	STRUCTURE REMOVAL
[Dotted Box]	DRIVEWAY PAVEMENT REMOVAL (PCC)	[Hatched Line]	COMBINATION CURB & GUTTER REMOVAL
[Stippled Box]	BITUMINOUS PAVEMENT REMOVAL	[Hatched Line]	STORM SEWER OR CULVERT REMOVAL
[Symbol]		[FHM Box]	FIRE HYDRANT TO BE MOVED
[Symbol]		[X Box]	TREE REMOVAL



NOTE:
ALL EXISTING TRAFFIC SIGNS SHALL BE REMOVED, STORED AND REINSTALLED AT THE END OF CONSTRUCTION OPERATIONS AS DIRECTED BY THE ENGINEER.
THE CONTRACTOR SHALL PROVIDE TEMPORARY TRAFFIC SIGNS FOR THE DURATION OF CONSTRUCTION OPERATIONS (SEE GENERAL NOTES)

CHRISTOPHER B. BURKE ENGINEERING LTD.
9575 West Higgins Road, Suite 600
Rosemont, Illinois 60018
(847) 823-0500

CLIENT: **VILLAGE OF SCHAUMBURG**
Engineering Department
101 Schaumburg Court
Schaumburg, IL. 60193-7806

NO.	DATE	NATURE OF REVISION	CHKD.
FILE NAME	N:\SCHAUMBURG\01-434\DESIGN\434_03_REM.REM		

DESIGN: GS
DWN: GS
CHKD: JGS
SCALE: 1" = 20'
DATE: 04/05/2005

TITLE: **EXISTING CONDITIONS AND REMOVAL PLAN C-91-108-04**

PROJECT NO. 01-434
SHEET 12 OF 98
DRAWING NO. 12