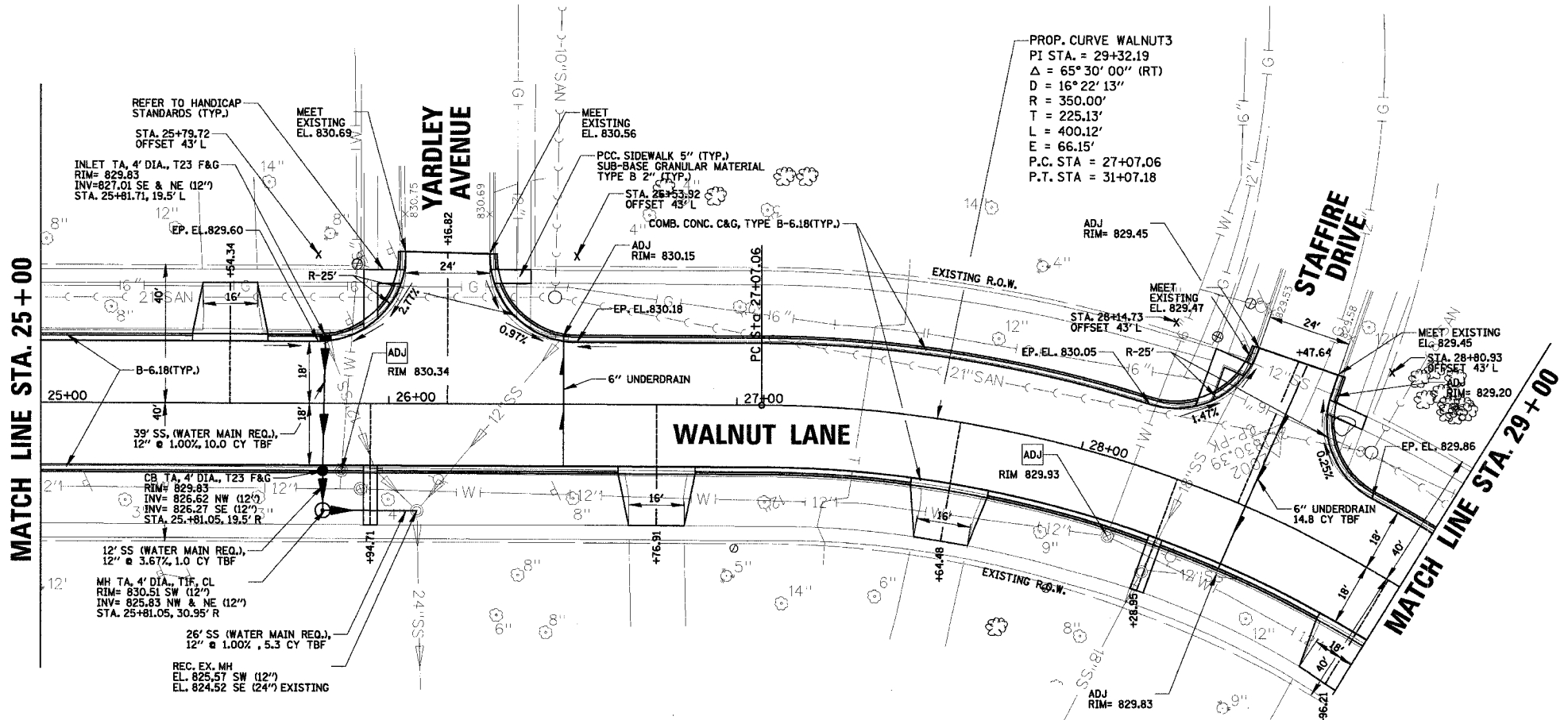
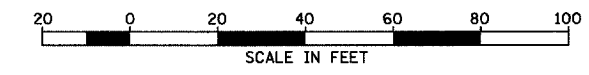
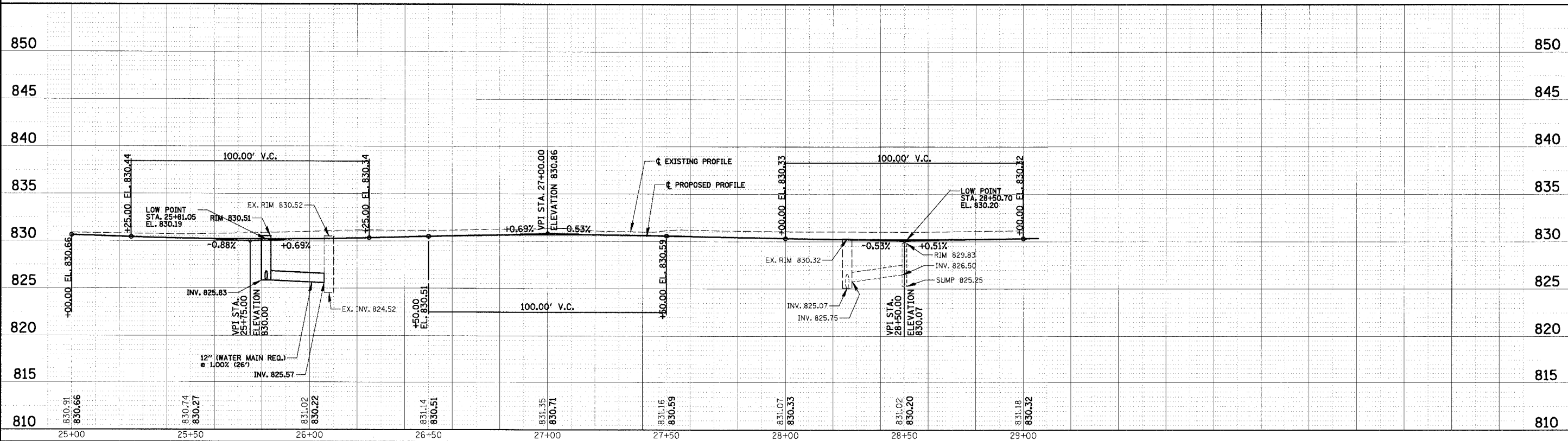


F.A.U. NO.	SECTION	COUNTY	TOTAL SHEETS	SHEET NO.
2556	00-00070-00-FP	COOK	98	21
FED. ROAD DIST. NO. 1		ILLINOIS		FED. AID PROJECT
<b>CONTRACT No. 83799</b>				



PROP. CURVE WALNUT3  
 PI STA. = 29+32.19  
 $\Delta = 65^\circ 30' 00''$  (RT)  
 $D = 16^\circ 22' 13''$   
 $R = 350.00'$   
 $T = 225.13'$   
 $L = 400.12'$   
 $E = 66.15'$   
 P.C. STA = 27+07.06  
 P.T. STA = 31+07.18

NOTE:  
 ALL DRIVEWAY ARE PCC DRIVEWAY  
 PAVEMENT 7", EXCEPT AS NOTED.



**CHRISTOPHER B. BURKE ENGINEERING LTD.**  
 9575 West Higgins Road, Suite 600  
 Rosemont, Illinois 60018  
 (847) 823-0500

CLIENT:  
**VILLAGE OF SCHAUMBURG**  
 Engineering Department  
 101 Schaumburg Court  
 Schaumburg, IL. 60193-7806

NO.	DATE	NATURE OF REVISION	CHKD.
FILE NAME	N:\SCHAUMBURG\01-434\DESIGN\PR_434_04.rpp		
DSGN.	GS		
DWN.	GS		
CHKD.	JGS		
SCALE:	1" = 20' HOR.		
DATE:	04/05/2005		
	1" = 5' VERT.		

TITLE:  
**WALNUT LANE PLAN AND PROFILE**  
 STA. 25+00 TO STA. 29+00  
 C-91-108-04

PROJECT NO.  
 01-434  
 SHEET 21 OF 98  
 DRAWING NO.  
**21**