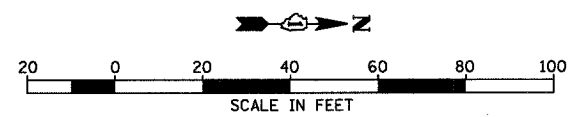


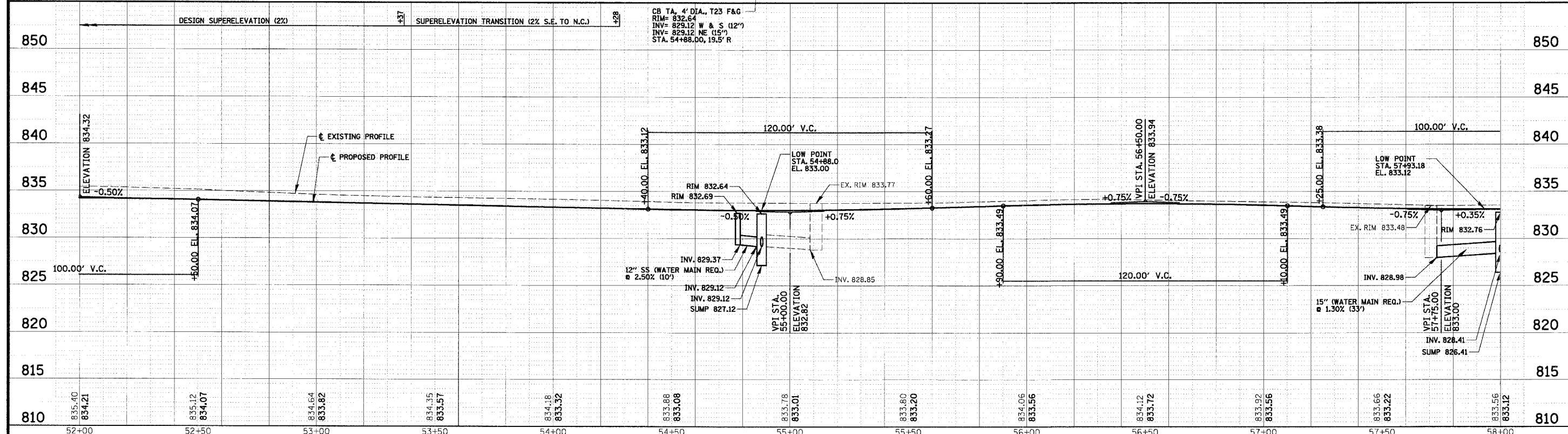
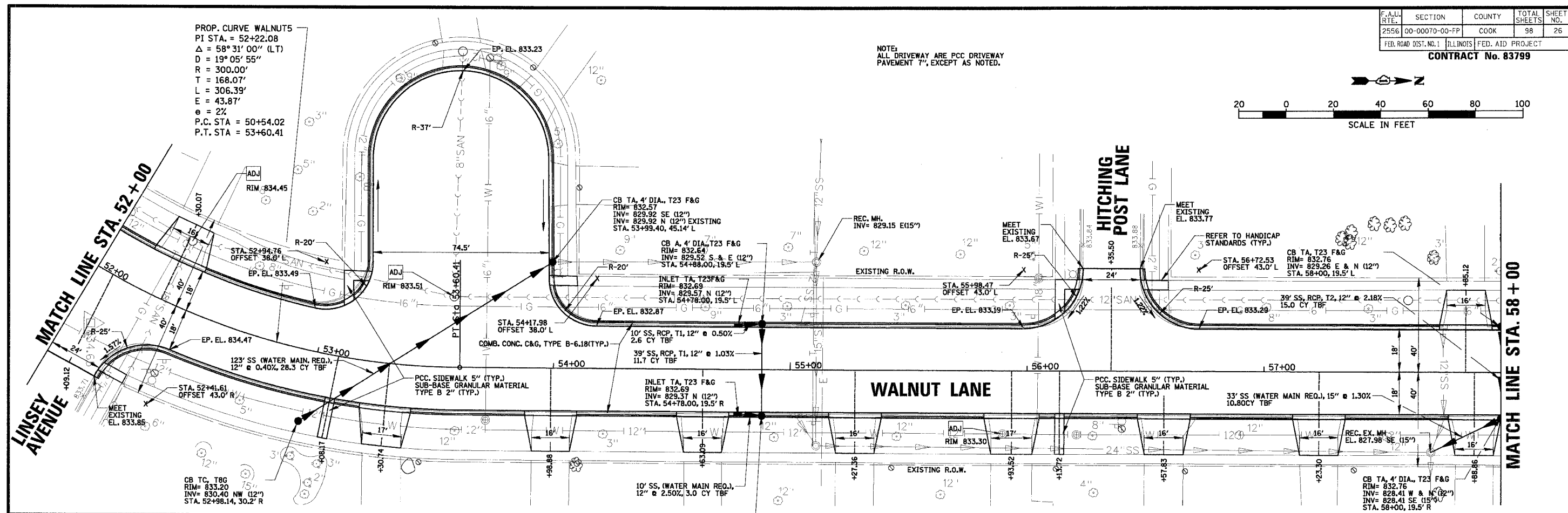
F.A.U. RTE.	SECTION	COUNTY	TOTAL SHEETS	SHEET NO.
2556	00-00070-00-PP	COOK	98	26
FED. ROAD DIST. NO. 1		ILLINOIS FED. AID PROJECT		

CONTRACT No. 83799



PROP. CURVE WALNUTS
 PI STA. = 52+22.08
 $\Delta = 58^\circ 31' 00''$ (L.T.)
 $D = 19^\circ 05' 55''$
 $R = 300.00'$
 $T = 168.07'$
 $L = 306.39'$
 $E = 43.87'$
 $e = 2\%$
 P.C. STA. = 50+54.02
 P.T. STA. = 53+60.41

NOTE:
 ALL DRIVEWAY ARE PCC DRIVEWAY
 PAVEMENT 7", EXCEPT AS NOTED.



CHRISTOPHER B. BURKE ENGINEERING LTD.
 9575 West Higgins Road, Suite 600
 Rosemont, Illinois 60018
 (847) 823-0500

CLIENT: **VILLAGE OF SCHAUMBURG**
 Engineering Department
 101 Schaumburg Court
 Schaumburg, IL. 60193-7806

NO.	DATE	NATURE OF REVISION	CHKD.
1	04/05/2005	DESIGN	GS
2		DWN.	GS
3		CHKD.	JGS
SCALE: 1" = 20' HOR.		1" = 5' VERT.	
DATE: 04/05/2005			

TITLE: **WALNUT LANE PLAN AND PROFILE**
STA. 52+00 TO STA. 58+00
C-91-108-04

PROJECT NO. 01-434
 SHEET 26 OF 98
 DRAWING NO. 26