

PLANS FOR PROPOSED ILLINOIS TRANSPORTATION ENHANCEMENT PROGRAM "LOWELL TRAIL"

| FAS ROUTE NO. | SEC | COUNTY | TOTAL SHEETS | SHEET NO |
|---------------|-----|--------|--------------|----------|
| - | * | LEE | 20 | 1 |

ILLINOIS PROJECT TE-D2(115)

* 01-P4000-00-BT

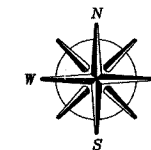
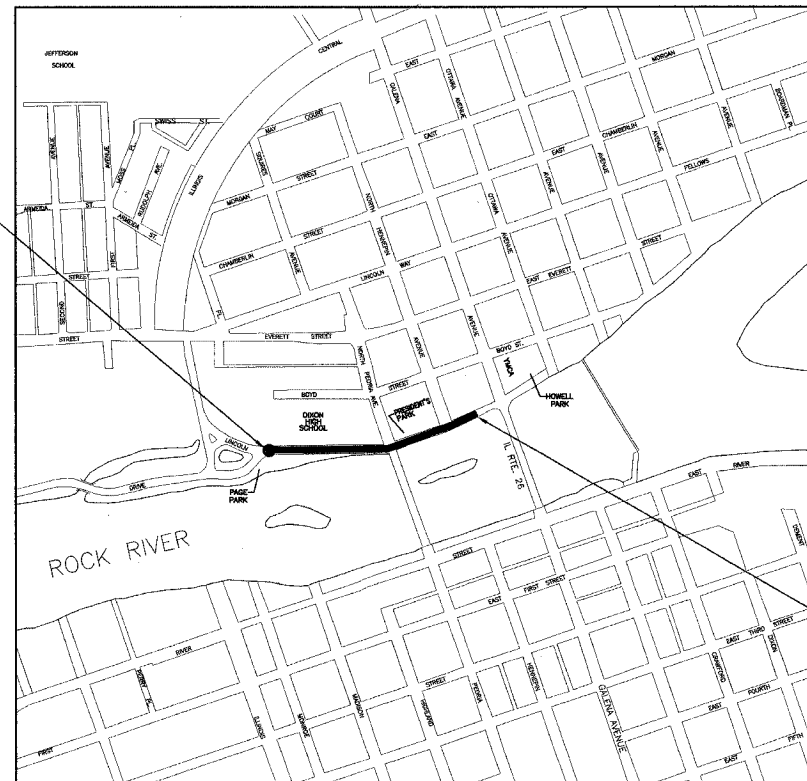
SECTION 01-P4000-00-BT DIXON PARK DISTRICT ILLINOIS PROJECT TE-D2(115)

JOB NO. C-92-100-02
CONTRACT NO. 85335
ITEP #201657

INDEX OF SHEETS

1. INDEX OF SHEETS & LOCATION MAP
2. SUMMARY OF QUANTITIES & GENERAL NOTES
3. TYPICAL SECTIONS
4. SCHEDULE OF QUANTITIES
5. DEMOLITION PLAN
- 7-8 PLAN & PROFILE
- 9-12 RETAINING WALL DETAILS
- 13 GENERAL DETAILS
- 14 TREE REPLACEMENT PLAN
- 15 EROSION & SEDIMENT CONTROL PLAN
- 16-20 CROSS SECTIONS

SECTION 01-P4000-00-BT
CONSTRUCTION BEGINS AT STA. 100+00



BENCHMARK INFORMATION

- BM #21 - CHISELED "X" ON NORTH FLANGE BOLT OF F.H. ±500' WEST OF BENCHMARK 24, N. SIDE OF LINCOLN STATUE DR. ELEV. 651.21
- BM #24 - CHISELED "X" ON N. TOP FLANGE BOLT OF F.H. @ N.W. QUAD OF PEORIA AVE & LINCOLN STATUE DR. ELEV. 653.98
- BM #25 - RR SPIKE IN EAST FACE OF P.P. ±150' S. OF INTERSECTION OF EVERT ST. & LINCOLN STATUE DR. ON W. SIDE OF NATIONAL GUARD BLDG. ON E. SIDE OF RD. ELEV. 664.58

SECTION 01-P4000-00-BT
CONSTRUCTION ENDS AT STA. 111+61

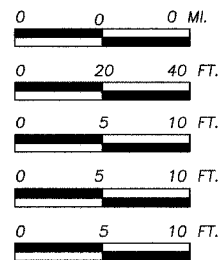
STANDARDS

- 280001-02 TEMPORARY EROSION CONTROL SYSTEMS
- 720001 SIGN PANEL MOUNTING DETAILS
- 720006 SIGN PANEL ERECTION DETAILS
- 720011 METAL POST FOR SIGNS, MARKERS & DELINEATORS
- 729001 APPLICATIONS OF TYPE A AND B METAL POSTS (FOR SIGNS & MARKERS)
- 814001 CONCRETE HANDHOLES

CITY OF DIXON LOCATION MAP

NET LENGTH = 1161 FEET = 0.220 MILE

LOCATION MAP SCALE



PLAN & PROFILE — HORIZONTAL
— VERTICAL

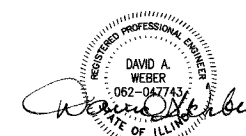
CROSS SECTIONS — HORIZONTAL
— VERTICAL

OPERATES 24 Hours See Sign
CALL JULIE 1-800-892-0123
WITH THE FOLLOWING:
COUNTY — LEE
CITY/TOWNSHIP — DIXON
SEC. 4 & 8, SEC. 40 & 8
48 Hours Before You Dig,
EXCLUDING SAT., SUN., & HOLIDAYS

PLANS PREPARED BY:

WENDLER ENGINEERING SERVICES, INC.

DIXON PARK DISTRICT
APPROVED 3-17, 2005
Debra Carey
DEBRA CAREY - EXECUTIVE DIRECTOR



March 16, 2005 DATE
DAVID A. WEBER
STERLING, ILLINOIS
ILLINOIS LICENSED PROFESSIONAL
ENGINEER NO. 062-047743
EXPIRES 11-30-2005

STATE OF ILLINOIS
DEPARTMENT OF TRANSPORTATION
SUBMITTED MARCH 30, 2005
Gregory J. Mowbray
LOCAL AGENCY REPRESENTATIVE AND
STREETS
APPROVED MARCH 30, 2005
Gregory J. Mowbray
DISTRICT ENGINEER