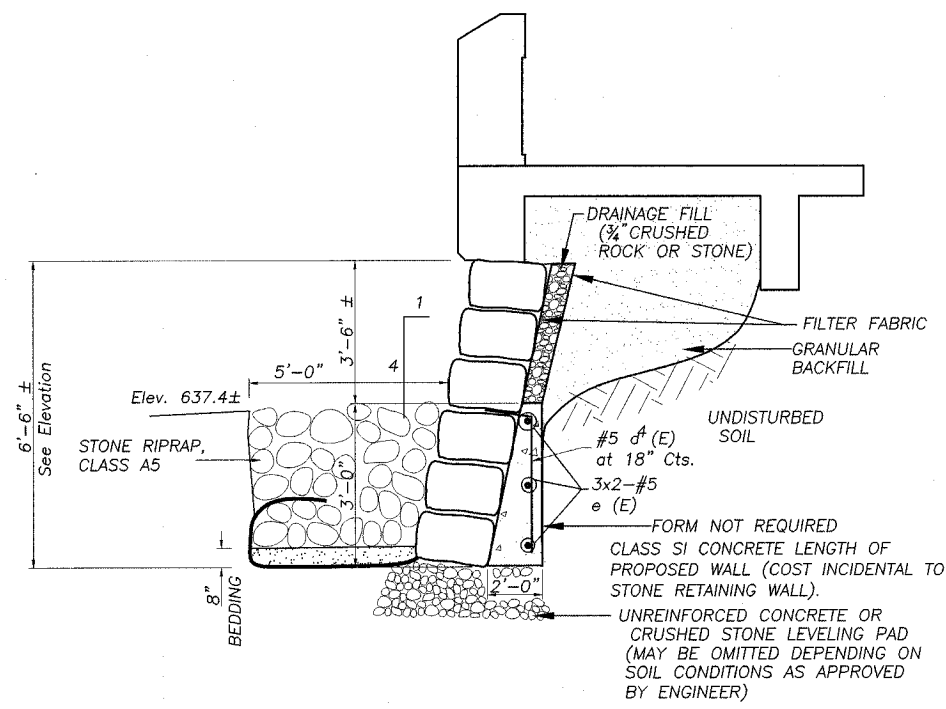
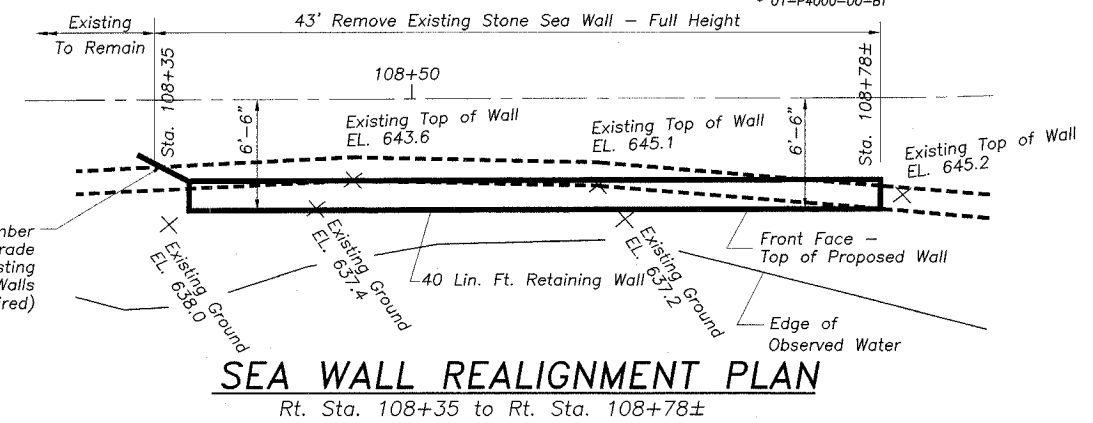
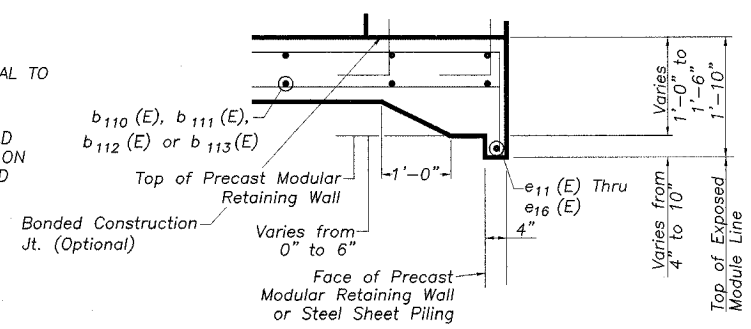


FAS ROUTE NO.	SEC	COUNTY	TOTAL SHEETS	SHEET NO.
-	*	LEE	20	11

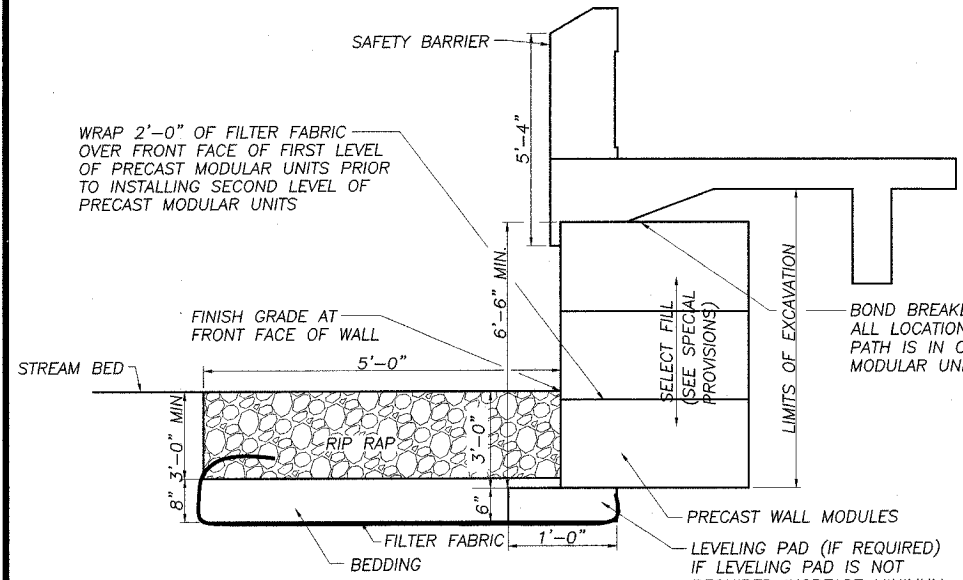
ILLINOIS PROJECT TE-D2(115)  
\* 01-P4000-00-BT



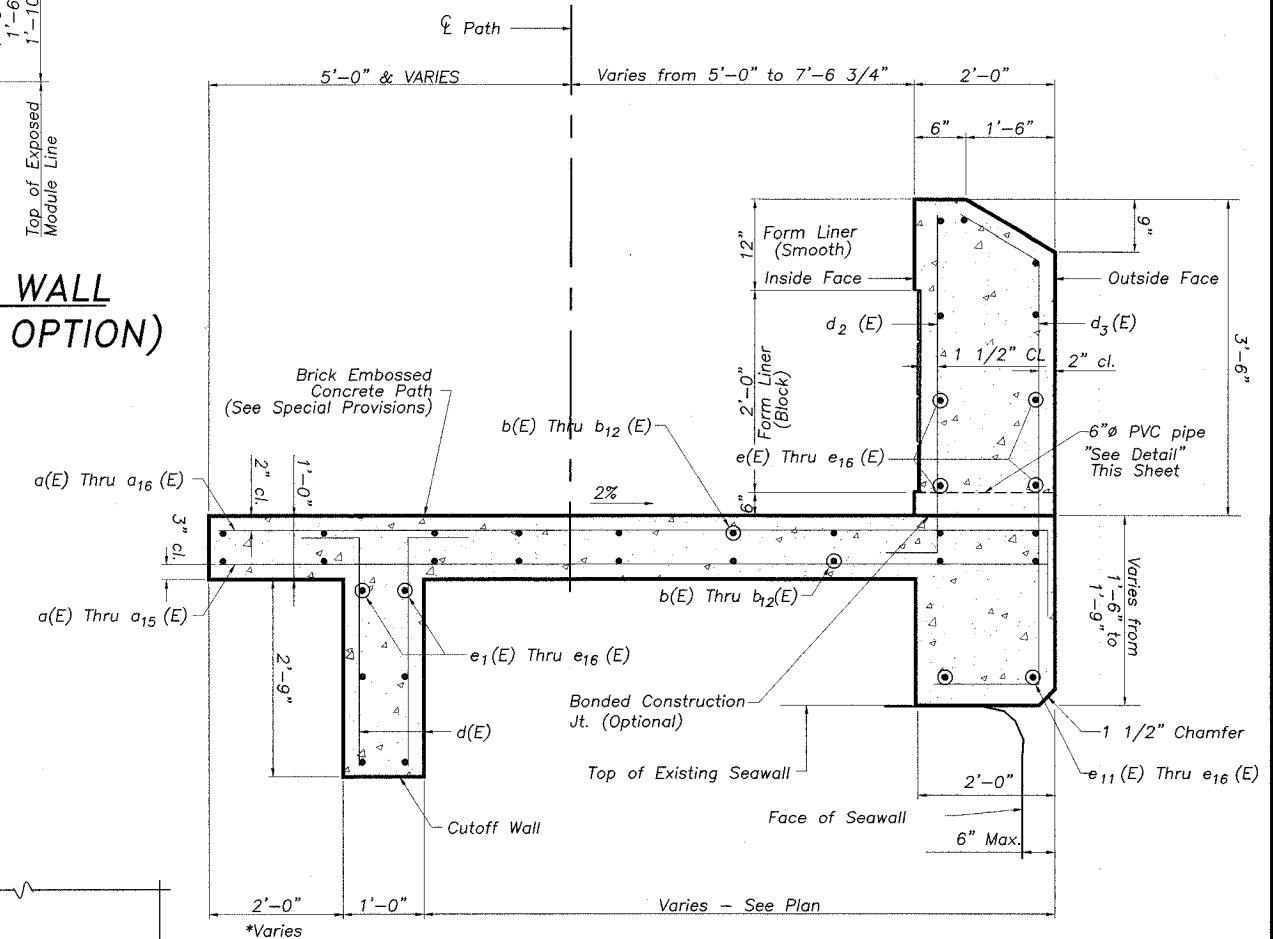
**TYPICAL SECTION THRU PROPOSED RETAINING WALL (STONE WALL OPTION)**  
Rt. Sta. 108+38 to Rt. Sta. 108+78±  
Looking West



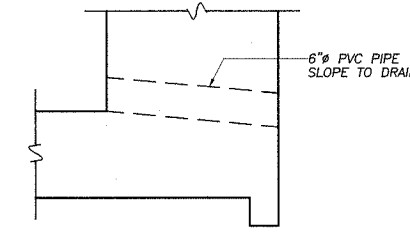
**TYPICAL SECTION THRU WALL (PRECAST MODULAR WALL OPTION)**  
Sta. 106+88.8 to Sta. 107+15.1  
Sta. 108+62.5 to Sta. 109+16.2  
Looking East



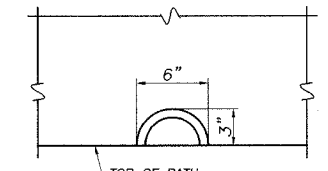
**TYPICAL SECTION THRU PROPOSED RETAINING WALL (PRECAST MODULAR OPTION)**  
Rt. Sta. 108+38 to Rt. Sta. 108+78±  
Looking West



**TYPICAL SECTION THRU WALL (STONE WALL OPTION)**  
Sta. 106+88.8 to Sta. 107+15.1  
Sta. 108+62.5 to Sta. 109+16.2  
Looking East



**DRAIN DETAIL**



**DRAIN ELEVATION**

	<b>WENDLER ENGINEERING SERVICES, INC.</b> Structural & Civil Engineers—Land Surveying—Environmental Services Illinois Professional Design Firm No. 184-000848	1968 - 2004 <b>AFTER 36 YEARS WE'RE STILL Turning Ideas into Reality!!!</b>	698 TIMBER CREEK ROAD - P.O. BOX 486 - DIXON, IL 61021 - 815-288-2261 28 E. MARION - SUITE 3 - PRINCETON, IL 61356 - 815-879-4731 1770 WEST STATE ST. - SYCAMORE, IL 60178 - 815-895-5008 804 FREEPORT RD. - STERLING, IL 61081 - (815) 626-4428 E-MAIL: info@wendler.nu	SCALE: 1"=10'-NTS	© WENDLER ENGINEERING SERVICES, INC. 2004 SURVEYED BY: 99022 DRAWN BY: BEH DESIGN DATE: 2/16/2004 <b>TYPICAL SECTION THRU WALL RETAINING WALL DETAILS</b> DIXON PARK DISTRICT
--	---	--	--	-------------------	--