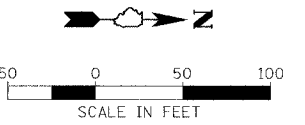


| F.A. RTE. | SECTION | COUNTY | TOTAL SHEETS | SHEET NO. |
|---------------------|---------------------------|------------------|--------------|-----------|
| | 04-00001-00-PV | DEKALB | 43 | 8 |
| | STA. 11+38.77 | TO STA. 25+20.00 | | |
| FED. ROAD DIST. NO. | ILLINOIS FED. AID PROJECT | | | |

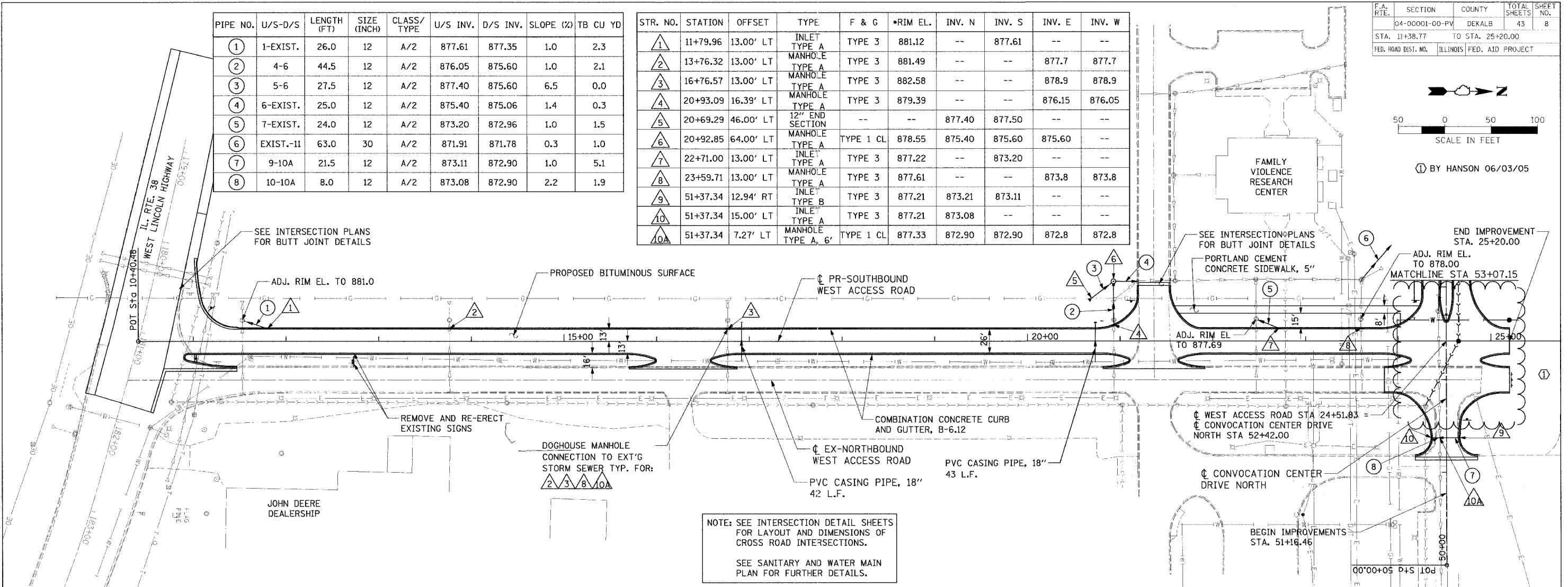


BY HANSON 06/03/05

| PIPE NO. | U/S-D/S | LENGTH (FT) | SIZE (INCH) | CLASS/TYPE | U/S INV. | D/S INV. | SLOPE (%) | TB CU YD |
|----------|-----------|-------------|-------------|------------|----------|----------|-----------|----------|
| 1 | 1-EXIST. | 26.0 | 12 | A/2 | 877.61 | 877.35 | 1.0 | 2.3 |
| 2 | 4-6 | 44.5 | 12 | A/2 | 876.05 | 875.60 | 1.0 | 2.1 |
| 3 | 5-6 | 27.5 | 12 | A/2 | 877.40 | 875.60 | 6.5 | 0.0 |
| 4 | 6-EXIST. | 25.0 | 12 | A/2 | 875.40 | 875.06 | 1.4 | 0.3 |
| 5 | 7-EXIST. | 24.0 | 12 | A/2 | 873.20 | 872.96 | 1.0 | 1.5 |
| 6 | EXIST.-11 | 63.0 | 30 | A/2 | 871.91 | 871.78 | 0.3 | 1.0 |
| 7 | 9-10A | 21.5 | 12 | A/2 | 873.11 | 872.90 | 1.0 | 5.1 |
| 8 | 10-10A | 8.0 | 12 | A/2 | 873.08 | 872.90 | 2.2 | 1.9 |

| STR. NO. | STATION | OFFSET | TYPE | F & G | RIM EL. | INV. N | INV. S | INV. E | INV. W |
|----------|----------|-----------|--------------------|-----------|---------|--------|--------|--------|--------|
| 1 | 11+79.96 | 13.00' LT | INLET TYPE A | TYPE 3 | 881.12 | -- | 877.61 | -- | -- |
| 2 | 13+76.32 | 13.00' LT | MANHOLE TYPE A | TYPE 3 | 881.49 | -- | -- | 877.7 | 877.7 |
| 3 | 16+76.57 | 13.00' LT | MANHOLE TYPE A | TYPE 3 | 882.58 | -- | -- | 878.9 | 878.9 |
| 4 | 20+93.09 | 16.39' LT | MANHOLE TYPE A | TYPE 3 | 879.39 | -- | -- | 876.15 | 876.05 |
| 5 | 20+69.29 | 46.00' LT | 12" END SECTION | -- | -- | 877.40 | 877.50 | -- | -- |
| 6 | 20+92.85 | 64.00' LT | MANHOLE TYPE A | TYPE 1 CL | 878.55 | 875.40 | 875.60 | 875.60 | -- |
| 7 | 22+71.00 | 13.00' LT | INLET TYPE A | TYPE 3 | 877.22 | -- | 873.20 | -- | -- |
| 8 | 23+59.71 | 13.00' LT | MANHOLE TYPE A | TYPE 3 | 877.61 | -- | -- | 873.8 | 873.8 |
| 9 | 51+37.34 | 12.94' RT | INLET TYPE B | TYPE 3 | 877.21 | 873.21 | 873.11 | -- | -- |
| 10 | 51+37.34 | 15.00' LT | INLET TYPE A | TYPE 3 | 877.21 | 873.08 | -- | -- | -- |
| 10A | 51+37.34 | 7.27' LT | MANHOLE TYPE A, 6' | TYPE 1 CL | 877.33 | 872.90 | 872.90 | 872.8 | 872.8 |

HANSON
Hanson Professional Services Inc.
Copyright Hanson Professional Services Inc. 2005



NOTE: SEE INTERSECTION DETAIL SHEETS FOR LAYOUT AND DIMENSIONS OF CROSS ROAD INTERSECTIONS.

SEE SANITARY AND WATER MAIN PLAN FOR FURTHER DETAILS.

