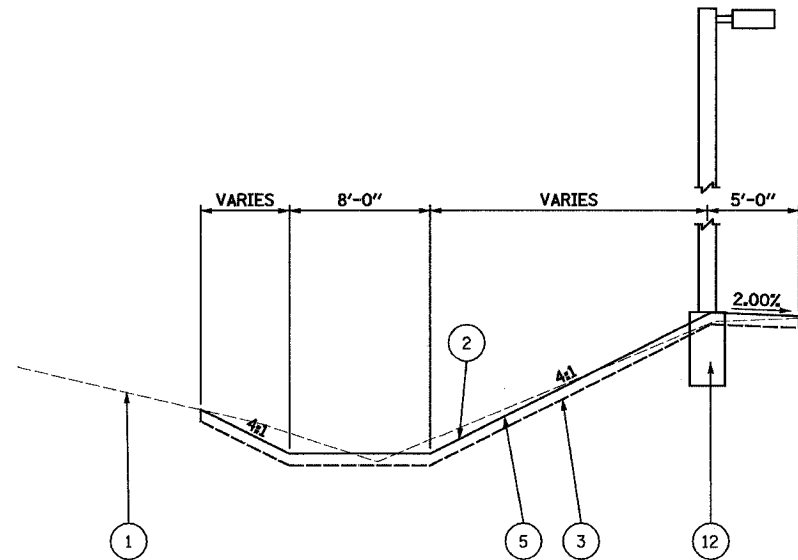
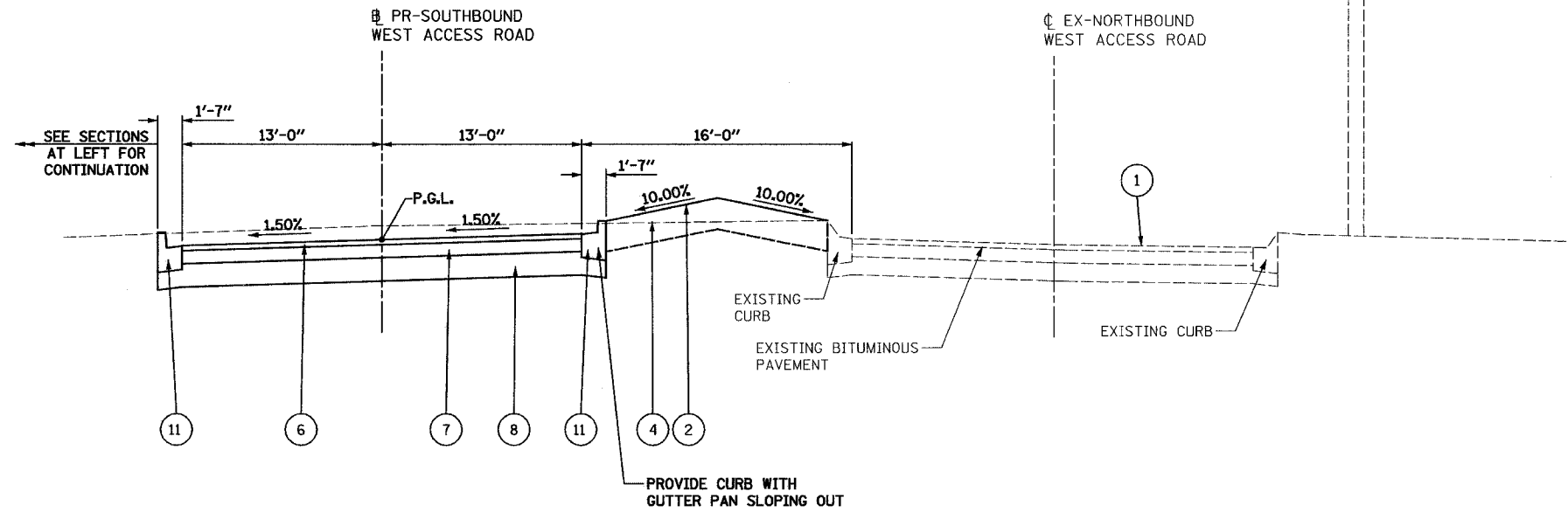


F.A. RTE.	SECTION	COUNTY	TOTAL SHEETS	SHEET NO.
	04-00001-00-PV	DEKALB	43	4
STA.	TO STA.			
FED. ROAD DIST. NO.	ILLINOIS	FED. AID PROJECT		

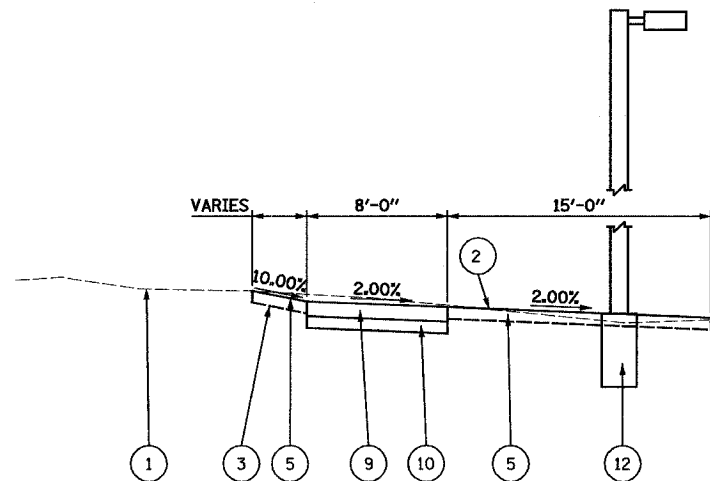


PROPOSED DITCH SECTION
STA. 11+38.77 TO STA. 20+75.00



TYPICAL SECTION
STA. 11+38.77 TO STA. 23+79.33

INTERSECTION OMISSION
STA. 10+66.16 TO STA. 11+38.77
STA. 15+70.33 TO STA. 16+88.96
STA. 20+75.00 TO STA. 21+95.38
STA. 23+79.33 TO STA. 25+20.00



PROPOSED SIDEWALK SECTION
STA. 21+87.86 TO STA. 23+79.33

LEGEND

- | | |
|---|---|
| ① EXISTING GROUND LINE | ⑦ PROPOSED BITUMINOUS CONCRETE BINDER COURSE,
SUPERPAVE, IL-19.0, 4.5" |
| ② PROPOSED GROUND LINE | ⑧ PROPOSED SUB-BASE GRANULAR MATERIAL, TYPE B, 9" |
| ③ PROPOSED TOPSOIL FURNISH AND PLACE, 4" | ⑨ PROPOSED PORTLAND CEMENT CONCRETE SIDEWALK, 5" |
| ④ PROPOSED TOPSOIL FURNISH AND PLACE, 12" | ⑩ PROPOSED AGGREGATE BASE COURSE, TYPE A, 4" |
| ⑤ PROPOSED SEEDING, CLASS 2 | ⑪ PROPOSED COMBINATION CONCRETE CURB AND GUTTER, TYPE B-6.12 |
| ⑥ PROPOSED BITUMINOUS CONCRETE SURFACE COURSE,
SUPERPAVE, MIX "C", N50, 2.5" | ⑫ PROPOSED LIGHT POLE AND BASE (SEE LIGHTING PLANS FOR LOCATIONS) |

MIX	SUPERPAVE SURFACE COURSE	SUPERPAVE BINDER COURSE
PG GRADE	PG64-22	PG64-22
RAP % (MAX) **	30%	30%
DESIGN AIR VOIDS	3% @ N50	2% @ N50
MIXTURE COMPOSITION	IL-9.5 OR IL-12.5	IL-19.0
FRICTION AGGREGATE	MIXTURE C	N/A
MIXTURE WEIGHT	112 LB/SQ YD/IN	112 LB/SQ YD/IN

**IF THE RAP OPTION IS SELECTED, THE ASPHALT CEMENT GRADE MAY NEED TO BE ADJUSTED. THIS WILL BE DETERMINED BY THE ENGINEER.

REVISIONS		ILLINOIS DEPARTMENT OF TRANSPORTATION SECTION 04-00001-00-PV DEKALB COUNTY NORTHERN ILLINOIS UNIVERSITY WEST ACCESS ROAD WEST ACCESS ROAD TYPICAL SECTION
NAME	DATE	

SCALE: VERT. HORIZ. DATE 04/05/05 DRAWN BY RLA CHECKED BY MGD

HANSON
Hanson Professional Services Inc.
© Copyright Hanson Professional Services Inc. 2005

LAYOUT RLA 10/03/05 rwh
DRAWN RLA 03/04/05 04/14/2005
REVIEWED MGD 03/04/05 1024/05/04/1899/CIVIL/STAFF/501772.dwg