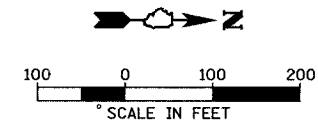


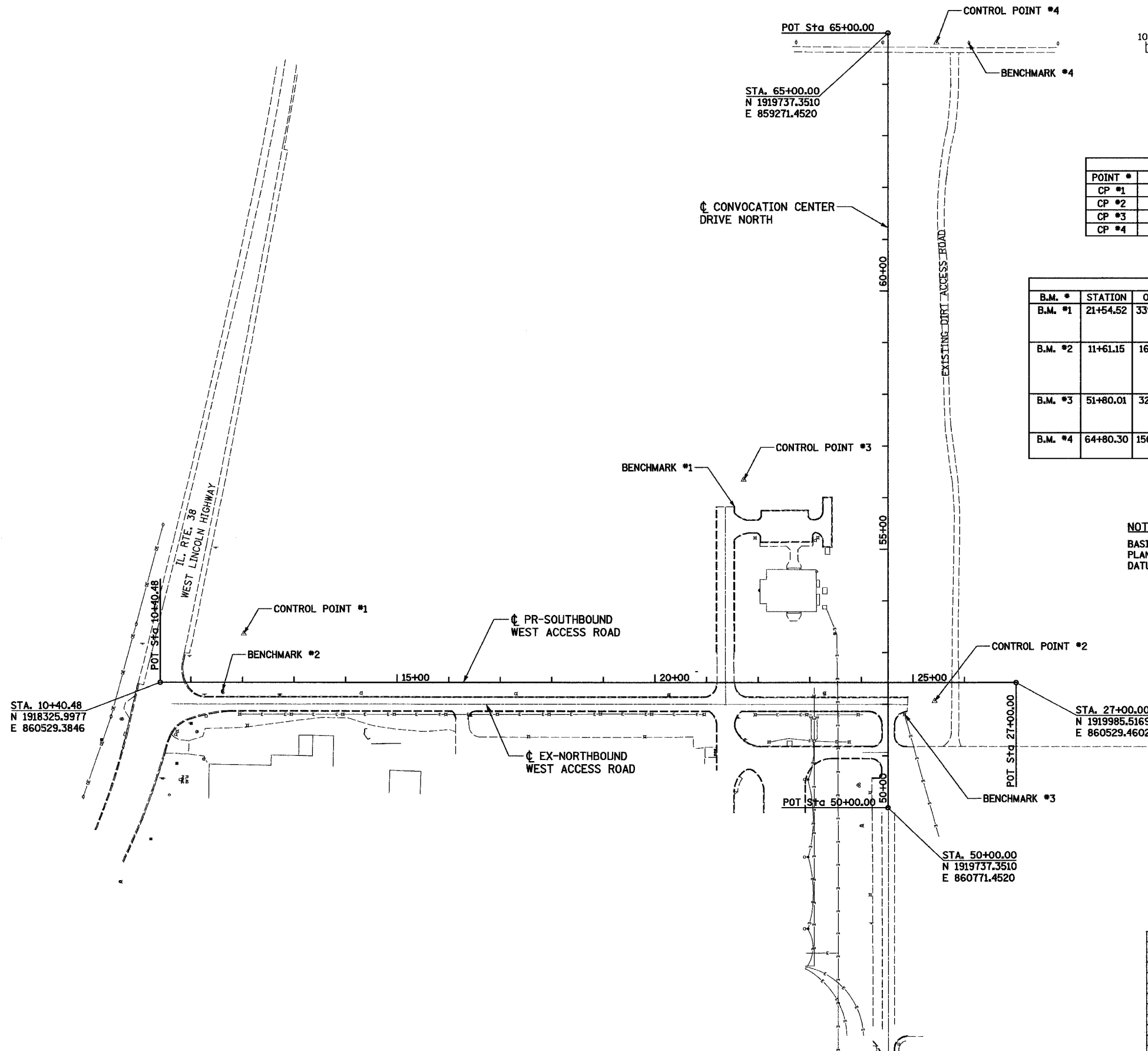
F.A. RTE.	SECTION	COUNTY	TOTAL SHEETS	SHEET NO.
04-00001-00-PV	DEKALB	43	12	
STA.	TO STA.			
FED. ROAD DIST. NO.	ILLINOIS	FED. AID PROJECT		



CONTROL POINTS				
POINT #	NORTHING	EASTING	ELEVATION	DESCRIPTION
CP #1	1918488.225	860434.964	888.23	IRON PIN
CP #2	1919827.683	860565.123	882.83	IRON PIN
CP #3	1919457.618	860136.544	887.83	IRON PIN
CP #4	1919831.091	859290.266	891.00	IRON PIN

BENCHMARKS				
B.M. #	STATION	OFFSET	DESCRIPTION	ELEVATION
B.M. #1	21+54.52	339.95' LT.	CHISELED "□" TOP OF CURB AT END OF NORTH CURB LINE ALONG ACCESS ROAD TO FAMILY VIOLENCE CENTER.	879.83
B.M. #2	11+61.15	16.44' RT.	WEST TOP FLANGE BOLT BETWEEN "MUE" & "LLER" ON 1ST FIRE HYDRANT NORTH OF ROUTE 38 ALONG WEST SIDE OF WEST ACCESS ROAD.	884.14
B.M. #3	51+80.01	32.74' RT.	CHISELED "□" ON NORTH SIDE OF LIGHT POLE FOUNDATION EAST SIDE OF WEST ACCESS ROAD.	879.75
B.M. #4	64+80.30	156.78' RT.	RAILROAD SPIKE IN EAST FACE OF POWER POLE NORTH OF DIRT ACCESS ROAD.	892.47

**NOTE:**  
BASIS OF BEARING IS GRID NORTH ON THE ILLINOIS STATE PLANE COORDINATE SYSTEM, EAST NAD83. VERTICAL DATUM BASED ON NAVD88.



**HANSON**  
Hanson Professional Services Inc.  
Copyright Hanson Professional Services Inc. 2005

LAYOUT: RLA 03/03/05  
DRAWN: RLA 04/05/05  
REVIEWED: MGD 04/05/05  
IN: C:\DB\1999\Civil\Sheet\0871ES.dgn

REVISIONS	
NAME	DATE

ILLINOIS DEPARTMENT OF TRANSPORTATION  
SECTION 04-00001-00-PV  
DEKALB COUNTY  
NORTHERN ILLINOIS UNIVERSITY WEST ACCESS ROAD  
**ALIGNMENT AND BENCHMARKS  
PLAN SHEET**

SCALE: VERT. DATE: 08/08/05  
DRAWN BY: RLA  
CHECKED BY: MGD