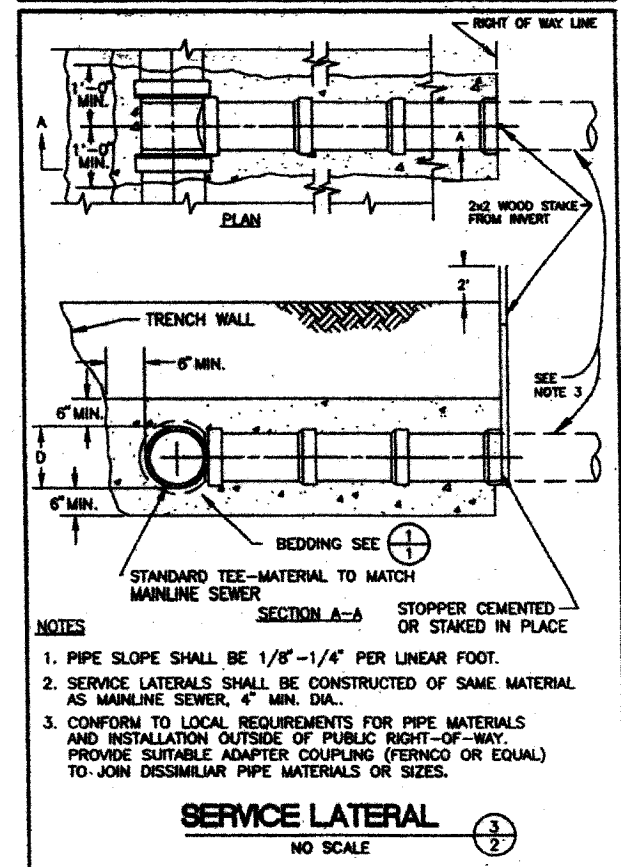
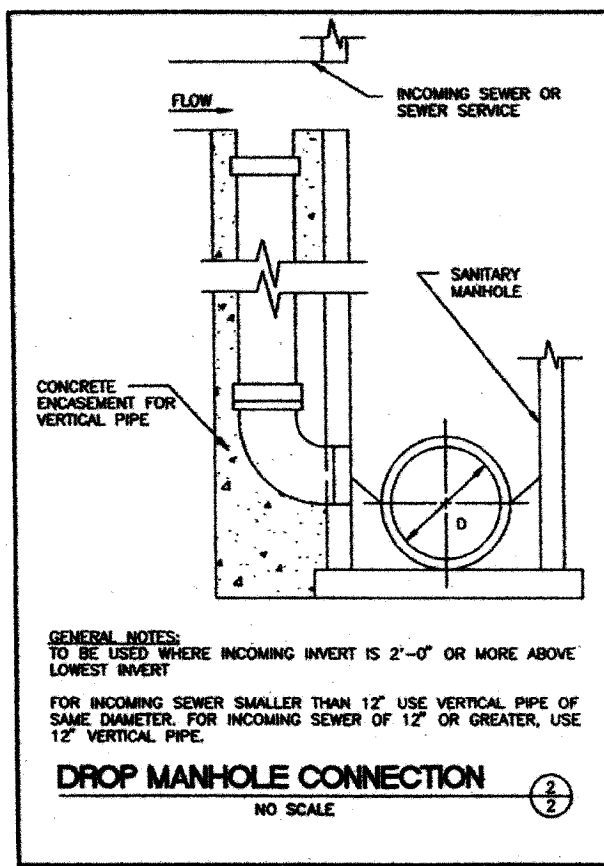
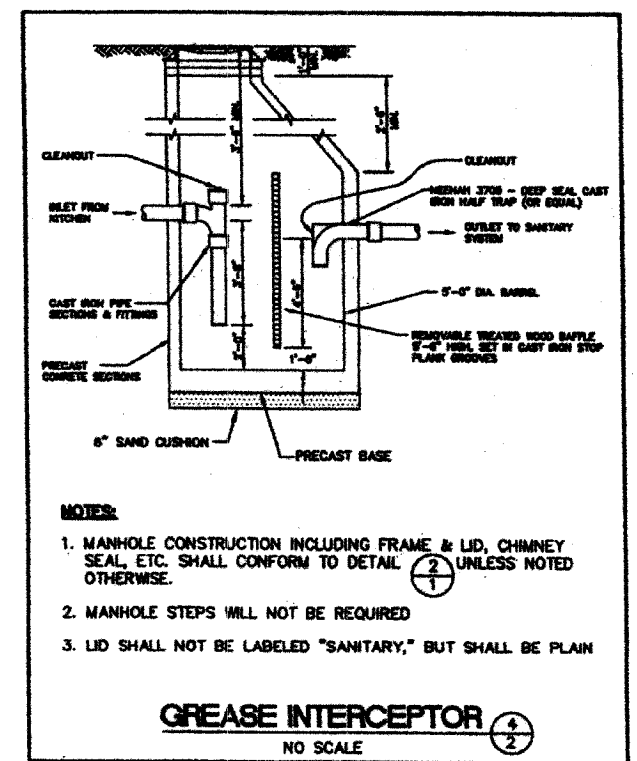
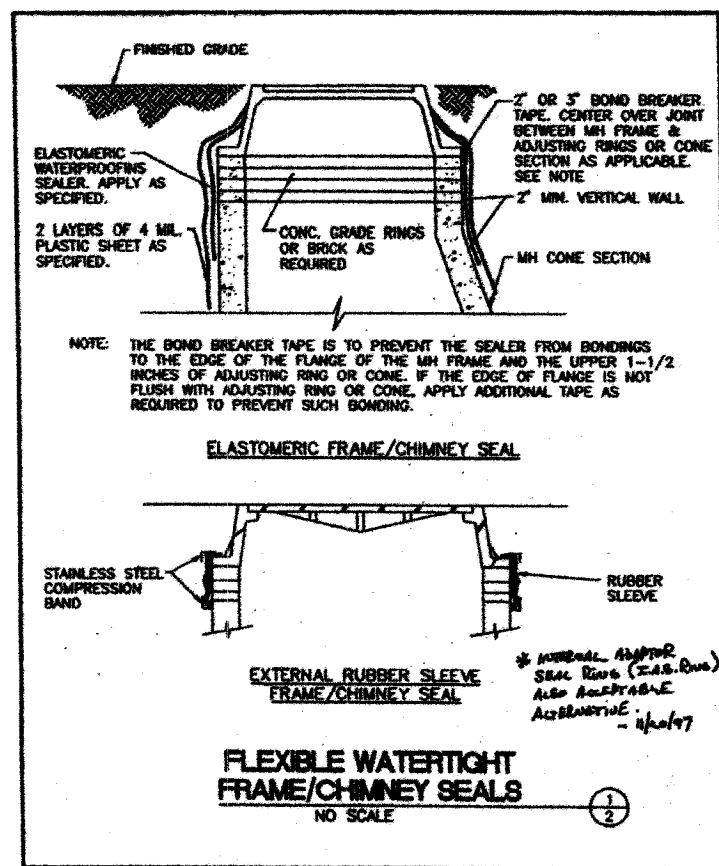


TOTAL SHEETS	SHEET NO.
43	43
PROJECT M-5017(35)	



- GENERAL NOTES:**
1. SANITARY SEWER CONSTRUCTION SHALL CONFORM TO THE STANDARD SPECIFICATIONS FOR WATER SEWER MAIN CONSTRUCTION IN ILLINOIS, LATEST EDITION.
 2. SEWERS, RISERS, AND SERVICE LATERALS MAY BE CONSTRUCTED OF EITHER DIP OR PVC PIPE WITH BEDDING AS INDICATED. CARRIER PIPES, MUST BE CONSTRUCTED OF DIP PIPE AS SPECIFIED BELOW.
 DUCTILE IRON PIPE: AWWA C151; THICKNESS AWWA C150; INTERIOR CEMENT LINING AND BITUMINOUS COATINGS; EXTERIOR COAL TAR COATING, AWWA C104, PRESSURE CLASS 350. JOINTS SHALL BE AWWA C111 RUBBER RING SLIP SEAL OR PUSH-ON TYPE.
 POLYVINYL CHLORIDE (PVC) PIPE: ASTM D3034, HEAVY WALL SEWER PIPE; SDR-26. JOINTS SHALL BE ASTM D3212 FLEXIBLE ELASTOMERIC SEALS.
 3. CONTRACTOR SHALL NOTIFY THE DEKALB SANITARY DISTRICT AND THE CITY OF DEKALB (IF IN PUBLIC RIGHT-OF-WAY) 24 HOURS IN ADVANCE OF THE BEGINNING OF SANITARY SEWER CONSTRUCTION.
 4. FULL LENGTH OF SANITARY SEWERS SHALL BE TESTED AS SPECIFIED IN DIVISION 3, SECTION 31 OF THE STANDARD SPECIFICATIONS FOR WATER AND SEWER MAIN CONSTRUCTION IN ILLINOIS. THE CONTRACTOR SHALL NOTIFY THE DEKALB SANITARY DISTRICT 48 HOURS IN ADVANCE OF THE TESTING PROCEDURES. A REPRESENTATIVE OF THE DEKALB SANITARY DISTRICT MUST BE PRESENT TO OBSERVE THE TESTING PROCEDURES. TESTING WILL INCLUDE LOW PRESSURE AIR TESTING, DEFLECTION TESTING OF FLEXIBLE PIPE, AND PIPE LAMPING.
 5. SANITARY MANHOLE FRAME/CHIMNEY SEAL SHALL CONSIST OF AN EXTERNAL RUBBER SLEEVE MANUFACTURED BY ORETEX SPECIALTY PRODUCTS OR AN ELASTOMERIC FRAME/CHIMNEY SEAL. THE ELASTOMERIC FRAME/CHIMNEY SEAL SHALL BE A SINGLE COMPONENT MOISTURE CURING POLYURETHANE. ACCEPTABLE PRODUCTS:
 TREMPROOF 60
 DURAMEN V500
 THODOCK OF SIKAFLEX IA
- BOND BREAKER MATERIAL SHALL BE POLYETHYLENE TAPE, 2 TO 3 INCHES WIDE WITH ONE SIDE HAVING ADHESIVE WHICH WILL READILY ADHERE TO IRON AND MASONRY. THE OTHER SIDE SHALL BE TREATED OR COATED TO POSITIVELY PREVENT A BOND WITH THE ELASTOMERIC SEALER. BOND BREAKER SHALL BE COMPATIBLE FOR USE WITH THE SEALER AND SHALL BE FURNISHED OR RECOMMENDED BY THE SEALER SUPPLIER.
- PRIMER AND CLEANER SHALL BE AS RECOMMENDED OR FURNISHED BY THE SEALER SUPPLIER.
- THE FRAME/CHIMNEY SEAL SHALL BE INSTALLED IN SUFFICIENT HEIGHT TO COVER THE FRAME/CHIMNEY JOINT AND ANY JOINTS ABOVE AND BELOW ANY PRECAST ADJUSTMENT RINGS.
6. INSTALLATION OF FRAME/CHIMNEY SEAL:
 - A. INSTALL SEALS IN ACCORDANCE WITH MANUFACTURER'S RECOMMENDATIONS.
 - B. POWER BRUSH TO ENSURE SURFACE TO RECEIVE SLEEVE IS CIRCULAR, CLEAN, REASONABLY SMOOTH, AND FREE OF LOOSE MATERIAL AND VOIDS.
 - C. EXTERNAL RUBBER SLEEVE FRAME/CHIMNEY SEAL:
 - (1) WHEN SURFACE IS ROUGH OR IRREGULAR, CORRECT WITH APPROVED LOW-SHINK MORTAR.
 - (2) FILL ALL MINOR IRREGULARITIES WITH BUTYL RUBBER SEALANT.
 - (3) PLACE RUBBER SLEEVE IN POSITION AROUND MANHOLE AND TIGHTEN STAINLESS STEEL BANDS TO PROVIDE WATERTIGHT SEAL.
 - (4) SKIRT:
 - (a) WRAP AROUND LOWER PORTION OF CHIMNEY BEFORE BOTTOM BAND IS INSTALLED, AND EXTENDED OVER LOWER BAND RECESS.
 - (b) PULL SKIRT TIGHT AND SOLVENT-WELD OVERLAPPED ENDS.
 - (c) TIGHTEN BOTTOM BANDS.
 - D. ELASTOMERIC FRAME/CHIMNEY SEAL:
 - (1) FILL DEPRESSIONS WHICH ARE GREATER THAN 1/4 INCH WITH MORTAR.
 - (2) ALL SURFACES SHALL BE FREE OF DUST, OIL, RUST, LOOSE MATERIALS AND OTHER CONTAMINANTS, WIPE WITH CLEANER.
 - (3) APPLY BOND BREAKER TAPE COMPLETELY AROUND MANHOLE, CENTERED OVER THE JOINT BETWEEN THE CASTING AND ADJACENT MASONRY.
 - (4) APPLY PRIMER IMMEDIATELY AFTER CLEANING.
 - (5) APPLY SEALER WITH TROWEL, ROLLER OR SPRAYER TO ACHIEVE A THICKNESS OF NOT LESS THAN 100 WET MILS. DO NOT APPLY WHEN TEMPERATURE IS BELOW 40 DEGREES AND FALLING. APPLY SEALER 6 INCHES UP ON THE CASTING, OVER ADJUSTING RINGS, AND A MINIMUM 6 INCHES BELOW THE TOP OF THE PRECAST CONE SECTION.
 - (6) ALLOW SEALER TO CURE 48 HOURS PRIOR TO BACKFILLING.
 - (7) IMMEDIATELY BEFORE BACKFILLING, LOOSELY WRAP TWO LAYERS OF 4 MIL PLASTIC SHEET OVER THE SEALED AREA TO PREVENT DIRECT CONTACT WITH BACKFILL.
 7. SANITARY MANHOLE TESTING

ALL NEW MANHOLES TO BE TESTED WITH VACUUM TESTER AS FOLLOWS:

Sheet 2 of 2

 - A. THE CONTRACTOR SHALL NOTIFY THE DEKALB SANITARY DISTRICT 48 HOURS IN ADVANCE OF THE TESTING PROCEDURE.
 - B. CONTRACTOR SHALL TEST MANHOLE FROM TOP OF CONE SECTION ON DOWN. TESTING OF ADJUSTING RINGS AND THE FRAME TO MANHOLE JOINT IS NOT REQUIRED.
 - C. PLUG ALL INCOMING AND OUTGOING SEWER AND SERVICE LINES AND RESTRAIN PLUGS.
 - D. REMOVE LID AND PLACE VACUUM TESTER HEAD ON TOP PORTION OF CONE SECTION.
 - E. DRAW VACUUM OF 10 INCHES HG.
 - F. TIME FOR VACUUM TO DROP TO 9 INCHES HG SHALL NOT BE LESS THAN 40, 50, OR 60 SECONDS FOR MANHOLE DIAMETERS OF 48, 60, AND 72 INCHES RESPECTIVELY.
 (1) FOR MANHOLES DEEPER THAN 20 FEET, TEST TIMES SHALL BE INCREASED BY 2 SECONDS PER FOOT OF ADDITIONAL MANHOLE DEPTH.
 - G. MANHOLES THAT FAIL SHALL BE SEALED AND RETESTED BY CONTRACTOR AT NO ADDITIONAL COMPENSATION UNTIL MANHOLE IS ABLE TO PASS TEST.
 8. SEQUENCE OF MANHOLE CONSTRUCTION, TESTING
 1. CONSTRUCT MANHOLE WITH LID/CASTING SET TO APPROXIMATE FINISHED GRADE. LID MUST BE EXPOSED.
 2. PERFORM SANITARY MANHOLE TESTING IN CONFORMANCE WITH NOTE 7.
 3. ISOLATE AND REPAIR ANY LEAKING JOINTS, PIPE SEALS, ETC.. OBTAIN PRE-APPROVAL OF REPAIR MATERIALS AND METHODS FROM DEKALB SANITARY DISTRICT. LEAKS MUST BE REPAIRED EXTERNALLY. "WIPING" OF MORTAR OR SEALANTS ON INSIDE SURFACE OF MANHOLE WILL NOT BE ACCEPTED. RETEST MANHOLE.
 4. THE DEKALB SANITARY DISTRICT WILL APPROVE THE PROJECT MANHOLES FOR PURPOSES OF OBTAINING OCCUPANCY PERMITS, ONCE ALL MANHOLES HAVE BEEN SUCCESSFULLY VACUUM TESTED.
 5. ONCE THE LEVELING BINDER FOR THE STREET HAS BEEN CONSTRUCTED, ADJUST MANHOLE TO FINAL GRADE AND INSTALL FRAME/CHIMNEY SEALS.
 6. CONTACT DEKALB SANITARY DISTRICT FOR FINAL VISUAL INSPECTION OF FRAME/CHIMNEY SEAL INSTALLATIONS.
 9. SYSTEM ISOLATION

THE DEKALB SANITARY DISTRICT WILL INSTALL ISOLATION PLUG(S) TO PROTECT THE "LIVE" DOWNSTREAM SANITARY SEWERS FROM EXTRANEOUS WATER AND DEBRIS DURING THE SEWER CONSTRUCTION.

THE PLUGS WILL NOT BE REMOVED UNTIL THE NEW SEWERS HAVE PASSED THE REQUIRED TESTS AND INSPECTIONS AND AT SUCH TIME THAT THE DISTRICT DETERMINES TO BE APPROPRIATE.

TAMPERING WITH OR REMOVAL OF THE ISOLATION PLUGS IS A VIOLATION OF DEKALB SANITARY DISTRICT ORDINANCE NO. 259. ANY PERSON VIOLATING SAID ORDINANCE PROVISION IS SUBJECT TO FINES, LEGAL ACTION AND IMMEDIATE ARREST.
 10. RECORD DRAWINGS

THE CONTRACTOR SHALL SUPPLY THROUGH HIS ENGINEER THE DISTRICT WITH TWO SETS OF RECORD DRAWINGS: ONE SET IS TO BE A MYLAR COPY AND ONE SET IS TO BE A BLUELINE OR "XEROX" COPY. THE RECORD DRAWINGS SHALL INDICATE ANY CHANGES FROM ORIGINAL PLANS.

THE RECORD DRAWINGS SHALL INCLUDE THE FOLLOWING: 1) THE RIM AND INVERT ELEVATIONS (USGS/MSL DATUM); 2) THE % GRADE, SIZE, PIPE MATERIAL AND DISTANCE FROM MANHOLE TO MANHOLE; 3) THE DISTANCE FROM A DEFINED MANHOLE TO EACH SERVICE WYE OR TEE AND THE LOCATION OF LATERALS AT LOT PROPERTY LINES (MEASURED FROM LOT LINE PINS); 4) SIZE & MATERIAL SERVICE LATERALS ARE MADE OF.

RECORD DRAWINGS ARE TO BE LABELED "RECORD DRAWINGS", AND DATED AND SIGNED BY AN ENGINEER LICENSED IN THE STATE OF ILLINOIS.
 11. PROJECT COMPLETION/ACCEPTANCE

TO ASSURE A TIMELY ACCEPTANCE OF THE NEW SEWER, ALL DEFICIENCIES SHALL BE NOTED DURING THE DISTRICT'S INSPECTIONS AND SHALL BE CORRECTED PRIOR TO FINAL INSPECTION. THE PLACEMENT OF A NEW SYSTEM INTO SERVICE OR THE ISSUANCE OF OCCUPANCY PERMITS MAY BE JEOPARDIZED UNTIL ALL REQUIREMENTS ARE COMPLETED.

REV.	DATE	REMARKS

DESIGNED: DLB
 DRAWN: EMK
 CHECKED: MLP
 DATE: 7/14/97

BELING CONSULTANTS

Professional Engineering Since 1906
 Moline, IL, Columbus, OH, Des Moines, IA, Chicago, IL, Joliet, IL, Peoria, IL, St. Louis, MO

<input type="checkbox"/>	PRELIMINARY
<input type="checkbox"/>	FINAL
<input type="checkbox"/>	RECORD

GENERAL NOTES AND DETAILS

DEKALB SANITARY DISTRICT

DEKALB ILLINOIS

SECTION 04-0001-00-PV