

INDEX OF SHEETS

- 1 COVER SHEET
- 2 SUMMARY OF QUANTITIES AND SCHEDULE OF QUANTITIES
- 3 GENERAL NOTES AND MISCELLANEOUS DETAILS
- 4 TYPICAL SECTIONS
- 5 TRANSIT LINE AND TIES
- 6 DETOUR PLANS
- 7 DIVISION STREET PLAN & PROFILE
- 8-25 BRIDGE STRUCTURE NO. 053-7105
- 26-28 DIVISION STREET CROSS SECTIONS
- 29-31 NORTH CREEK CHANNEL CROSS SECTIONS

STATE OF ILLINOIS
DEPARTMENT OF TRANSPORTATION
DIVISION OF HIGHWAYS

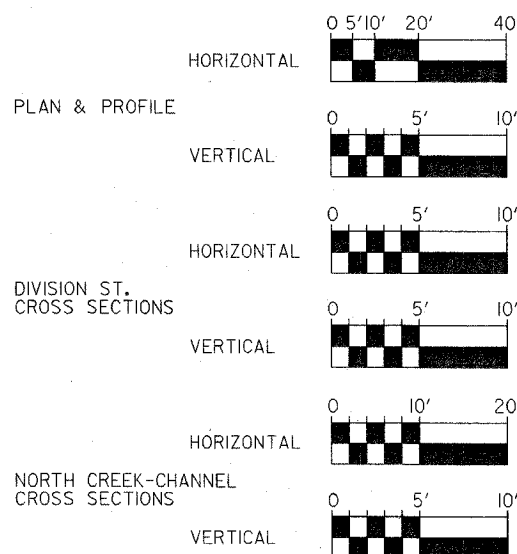
PLANS FOR PROPOSED

BRIDGE REPLACEMENT & REHABILITATION PROGRAM

STATE STANDARD DETAILS

- 000001-04 606001-02
- 280001-02 701501-03
- 420401-05 702001-05
- 515001-02 780001-01
- 602301 B.L.R. 17-3
- 604001-02 B.L.R. 21-6
- 604006-02 B.L.R. 22-4
- 604036-01

SCALES



UTILITIES

- POWER - COMMONWEALTH EDISON
- TELEPHONE - VERIZON
- GAS - NICOR
- WATER - ILLINOIS AMERICAN WATER CO.
- CABLE - MEDIACOM

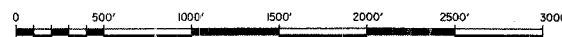
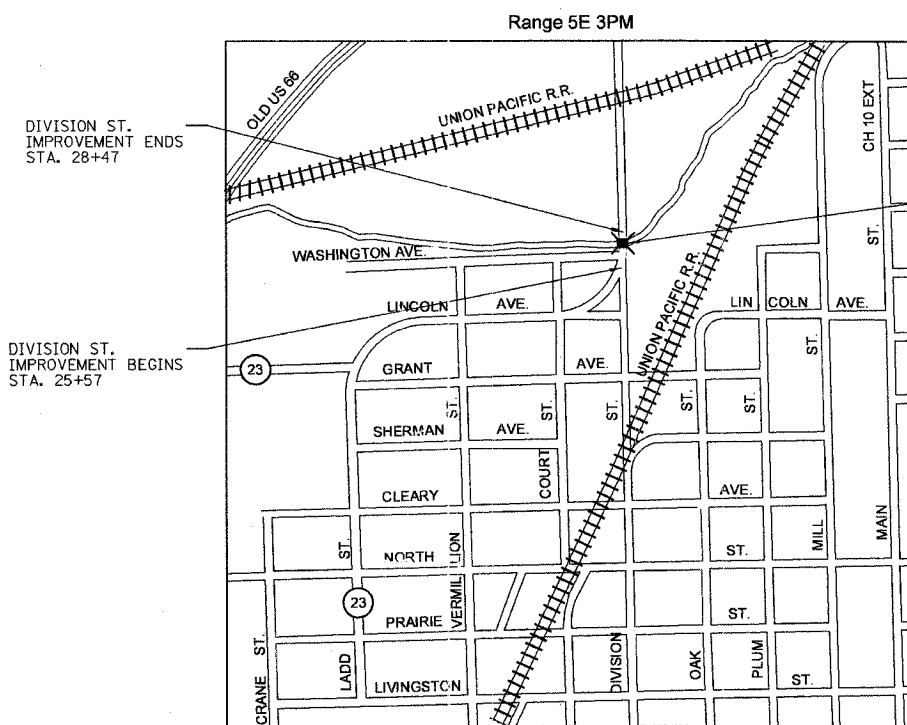
J.U.L.I.E. SYSTEM - THE TOLL FREE TELEPHONE NUMBER FOR JOINT UTILITY LOCATING INFORMATION FOR EXCAVATOR IS 1-800-892-0123.

BENCHMARKS:

- 1.) USGS Y248 1961 OLD RT66 (LINCOLN AVE.) & DITCH BRIDGE @ NE. CORNER OF BRIDGE ELEV. = 642.18.
- 2.) SET PK NAIL IN POWER POLE EAST SIDE OF DIVISION ST. ±60' NORTH OF EXISTING STRUCTURE STA. 28+75/21' RT. ELEV. = 642.33.
- 3.) TOP OF FIRE HYDRANT ON THE WEST SIDE OF DIVISION ST. @ THE SE. CORNER OF C&C AUTO WRECKING & TOWING STA. 31+35/30' LT. ELEV. = 644.23.

JOB NO. C-93-129-02
CONTRACT NO. 87238
CONSTRUCTION TYPE CODE: ROADWAY 1000
BRIDGE X021-2A

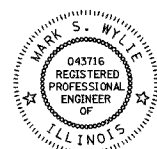
CITY OF PONTIAC, LIVINGSTON COUNTY
SECTION 02-00090-00-BR
DIVISION STREET
FEDERAL PROJECT BRM-5056 (13)



LOCATION MAP

DIVISION STREET: GROSS LENGTH OF PROJECT = 290.00 FT = 0.055 MILE; NET LENGTH OF PROJECT = 290.00 FT = 0.055 MILE
TOTAL: GROSS LENGTH OF PROJECT = 290.00 FT = 0.055 MILE; NET LENGTH OF PROJECT = 290.00 FT = 0.055 MILE

Farnsworth GROUP
2709 McGraw Drive
Bloomington, Illinois 61704
309/663-8435, 309/663-1571 fax

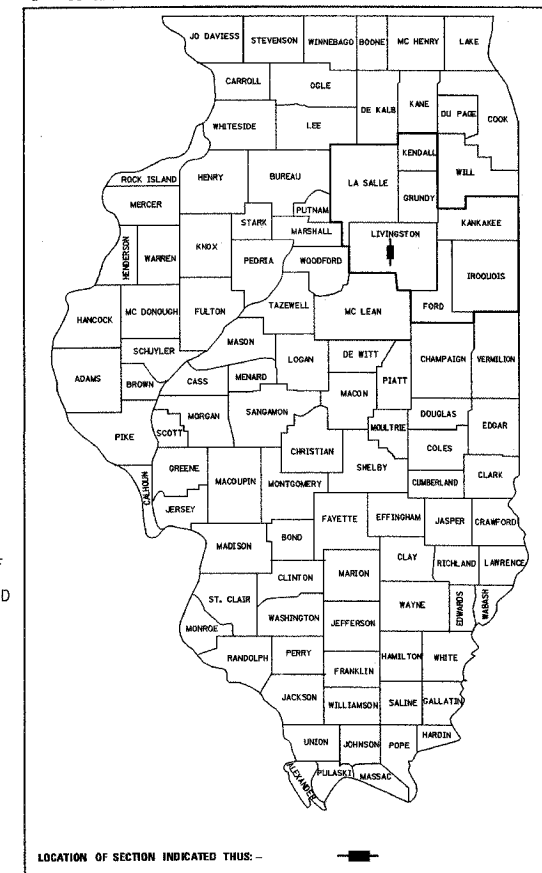


Mark S. Wylie Date 1/21/05
MARK S. WYLIE
ILLINOIS PROFESSIONAL ENGINEER
NO. 062-043716
EXPIRATION 11/30/05

DATE: 01-14-05

F.A.U. RTE.	SECTION	COUNTY	TOTAL SHEETS	SHEET NO.
6325	02-00090-00-BR	LIVINGSTON	31	1
STA. TO STA.				
FED. ROAD DIST. NO. 7 ILLINOIS FED. AID PROJECT#				
CONTRACT NO. 87238				

C - 93-129-02



PROPOSED STRUCTURE NO. 053-7105
THE PROPOSED SUPERSTRUCTURE WILL CONSIST OF A SINGLE-SPAN REINFORCED CONCRETE T-BEAM DECK THAT MEASURES 34'-0" END OF DECK TO END OF DECK AND 39'-4" OUT TO OUT. THE PROPOSED SUBSTRUCTURE WILL CONSIST OF REINFORCED CONCRETE CLOSED ABUTMENTS AND WINGWALLS EMBEDDED IN ROCK.

FUNCTIONAL CLASSIFICATION: COLLECTOR (URBAN)
DESIGN TRAFFIC: 4200 (2024)
DESIGN SPEED: 35 M.P.H.

APPROVED	<i>[Signature]</i> 01/24 20 05	MAYOR
APPROVED	<i>[Signature]</i> 01/24 20 05	COUNTY ENGINEER
PASSED	MARCH 7 20 05	DISTRICT ENGINEER OF LOCAL ROADS & STREETS
APPROVED	MARCH 7 20 05	DEPUTY DIRECTOR OF HIGHWAYS, REGION ENGINEER

STATE OF ILLINOIS
DEPARTMENT OF TRANSPORTATION