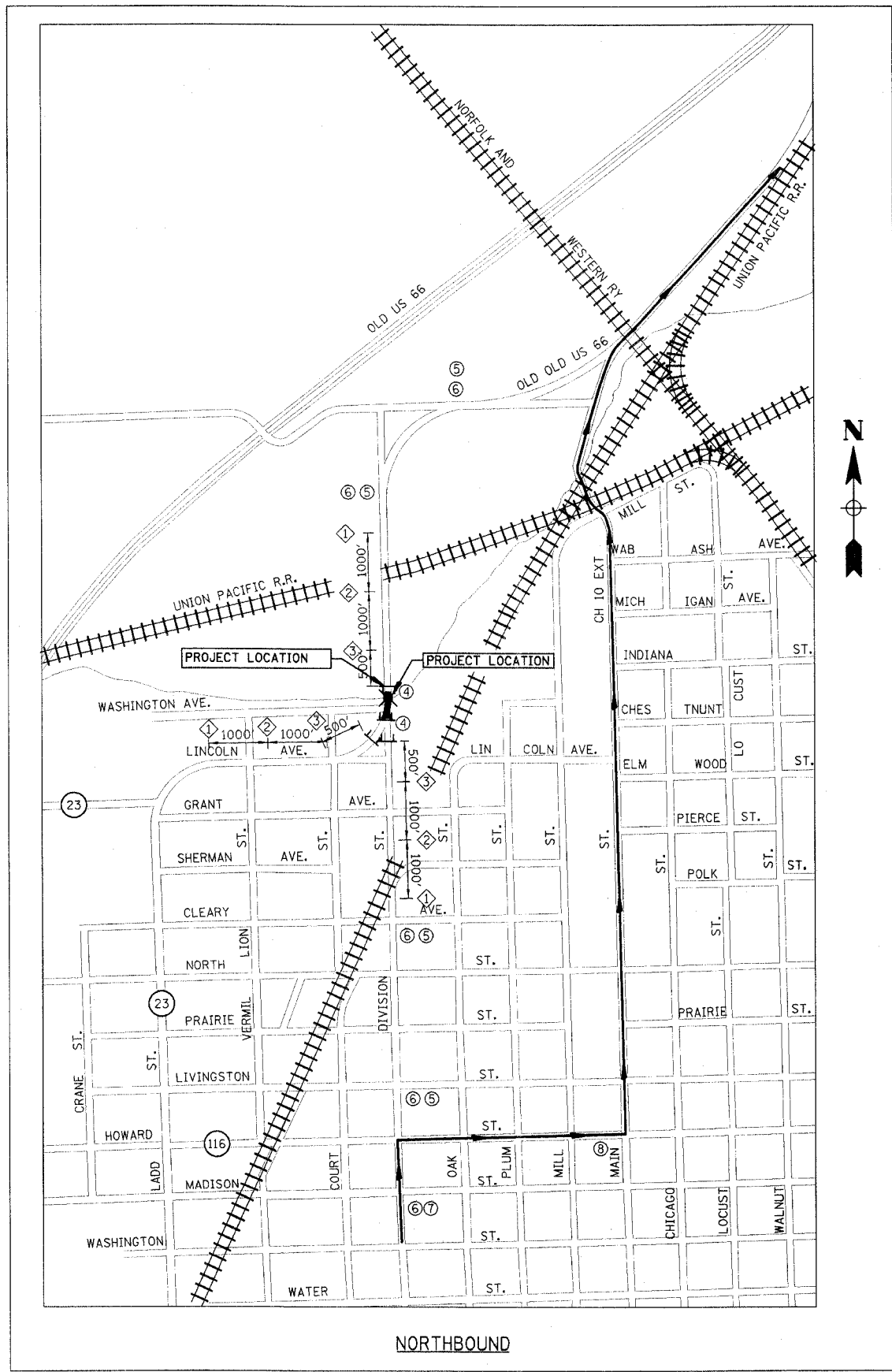
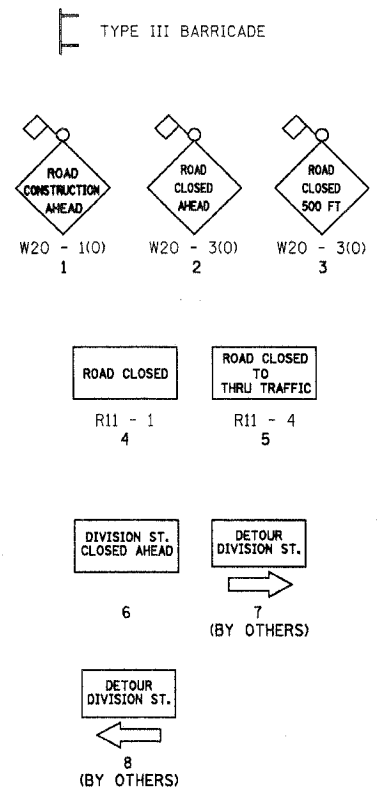
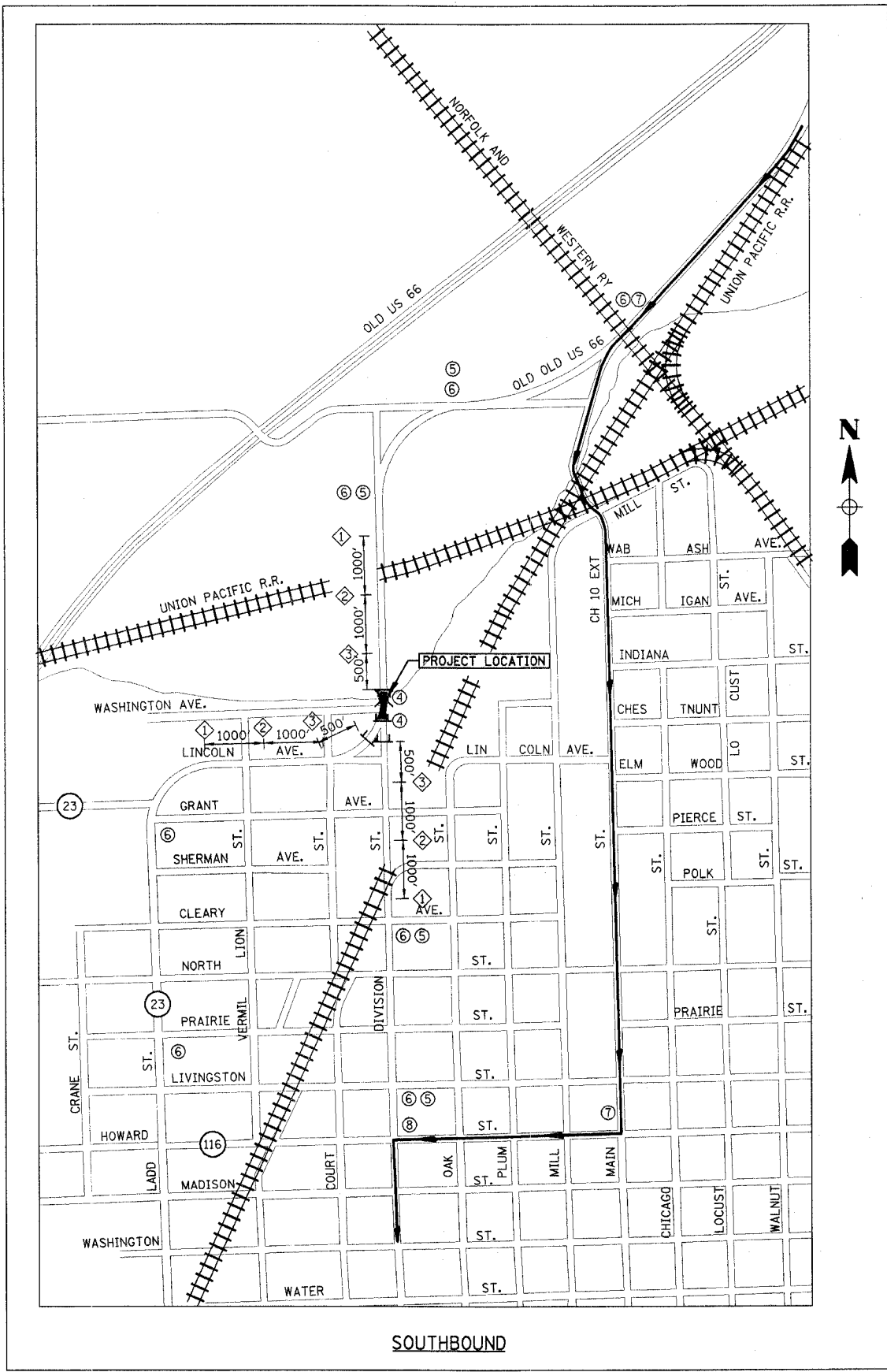


F.A.U. RTE.	SECTION	COUNTY	TOTAL SHEETS	SHEET NO.
6325	02-00090-00-BR	LIVINGSTON	31	6
STA.		TO STA.		
FED. ROAD DIST. NO. 7		ILLINOIS FED. AID PROJECT*		
CONTRACT NO. 87238				

**LEGEND**



**NORTHBOUND**



**SOUTHBOUND**

SECTION 02-00090-00-BR  
LIVINGSTON COUNTY  
PONTIAC, ILLINOIS

**DETOUR PLANS**

DRAWN BY DMM	<p><b>Farnsworth GROUP</b> 3700 McLaw Drive Bloomington, Illinois 61704 309/908-8488 309/943-1871 fax</p>	FILE NO. 24-6884
DATE 01/14/05		BOOK NO. 2233
CHECKED BY MSW		SHEET NO. 6 OF 31