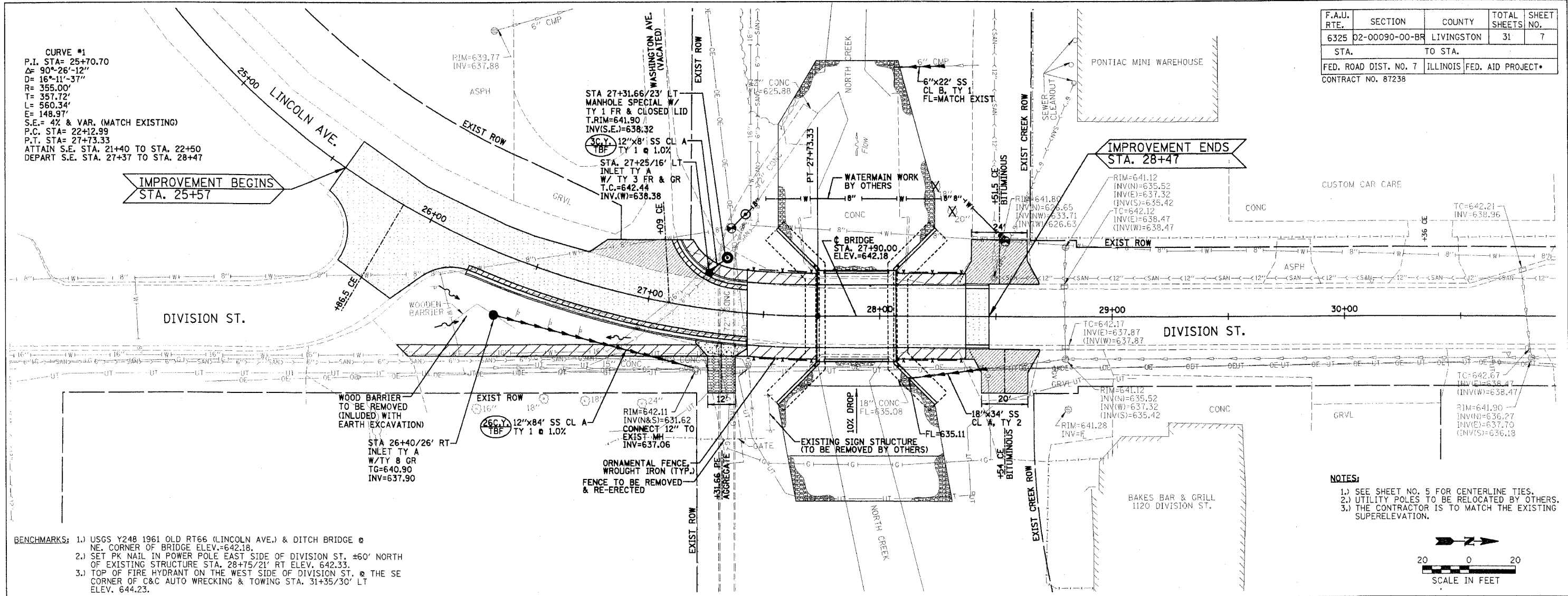
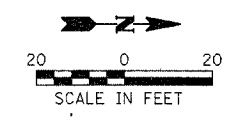


F.A.U. RTE.	SECTION	COUNTY	TOTAL SHEETS	SHEET NO.
6325	02-00090-00-BR	LIVINGSTON	31	7
STA.		TO STA.		
FED. ROAD DIST. NO. 7		ILLINOIS		FED. AID PROJECT*
CONTRACT NO. 87238				

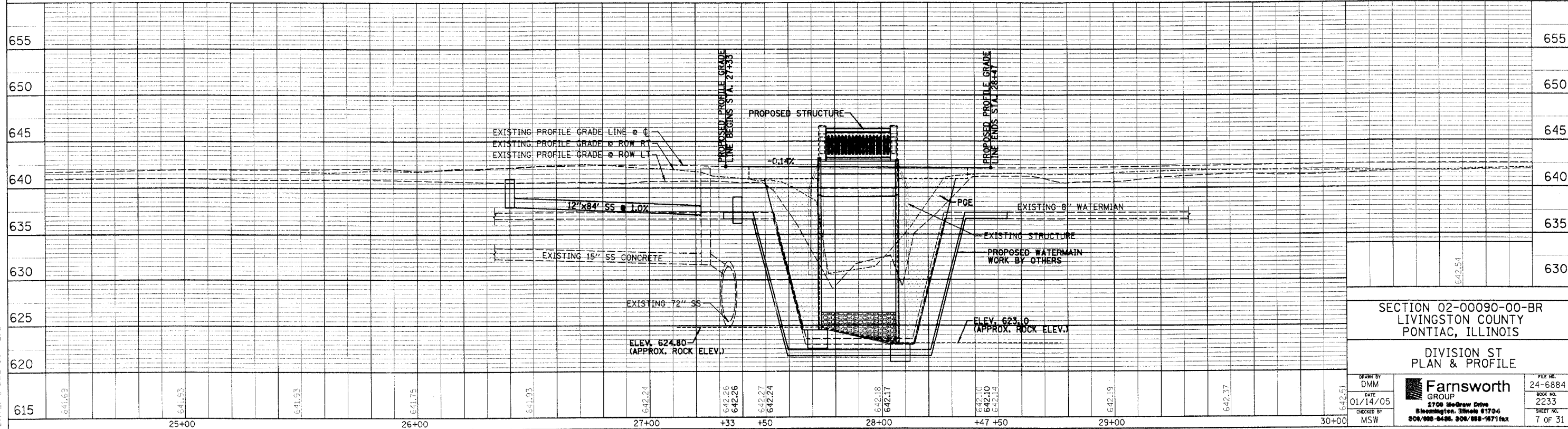
CURVE #1
P.I. STA= 25+70.70
Δ= 90°-26'-12"
D= 16°-11'-37"
R= 355.00'
T= 357.72'
L= 560.34'
E= 148.97'
S.E.= 4% & VAR. (MATCH EXISTING)
P.C. STA= 22+12.99
P.T. STA= 27+73.33
ATTAIN S.E. STA. 21+40 TO STA. 22+50
DEPART S.E. STA. 27+37 TO STA. 28+47



- NOTES:**
- 1.) SEE SHEET NO. 5 FOR CENTERLINE TIES.
 - 2.) UTILITY POLES TO BE RELOCATED BY OTHERS.
 - 3.) THE CONTRACTOR IS TO MATCH THE EXISTING SUPERELEVATION.



- BENCHMARKS:**
- 1.) USGS Y248 1961 OLD RT66 (LINCOLN AVE.) & DITCH BRIDGE @ NE CORNER OF BRIDGE ELEV.=642.18
 - 2.) SET PK NAIL IN POWER POLE EAST SIDE OF DIVISION ST. #60' NORTH OF EXISTING STRUCTURE STA. 28+75/21' RT ELEV. 642.33
 - 3.) TOP OF FIRE HYDRANT ON THE WEST SIDE OF DIVISION ST. @ THE SE CORNER OF C&C AUTO WRECKING & TOWING STA. 31+35/30' LT ELEV. 644.23.



SECTION 02-00090-00-BR
LIVINGSTON COUNTY
PONTIAC, ILLINOIS

DIVISION ST
PLAN & PROFILE

DRAWN BY: DMM
DATE: 01/14/05
CHECKED BY: MSW

Farnsworth GROUP
8708 Midway Drive
Bloomington, Illinois 61704
309/888-8486, 309/888-9711 fax

FILE NO: 24-6884
BOOK NO: 2233
SHEET NO: 7 OF 31

FILE: c:\users\jg\p\popen\p.dgn
DATE: 8-Dec-05 12:10