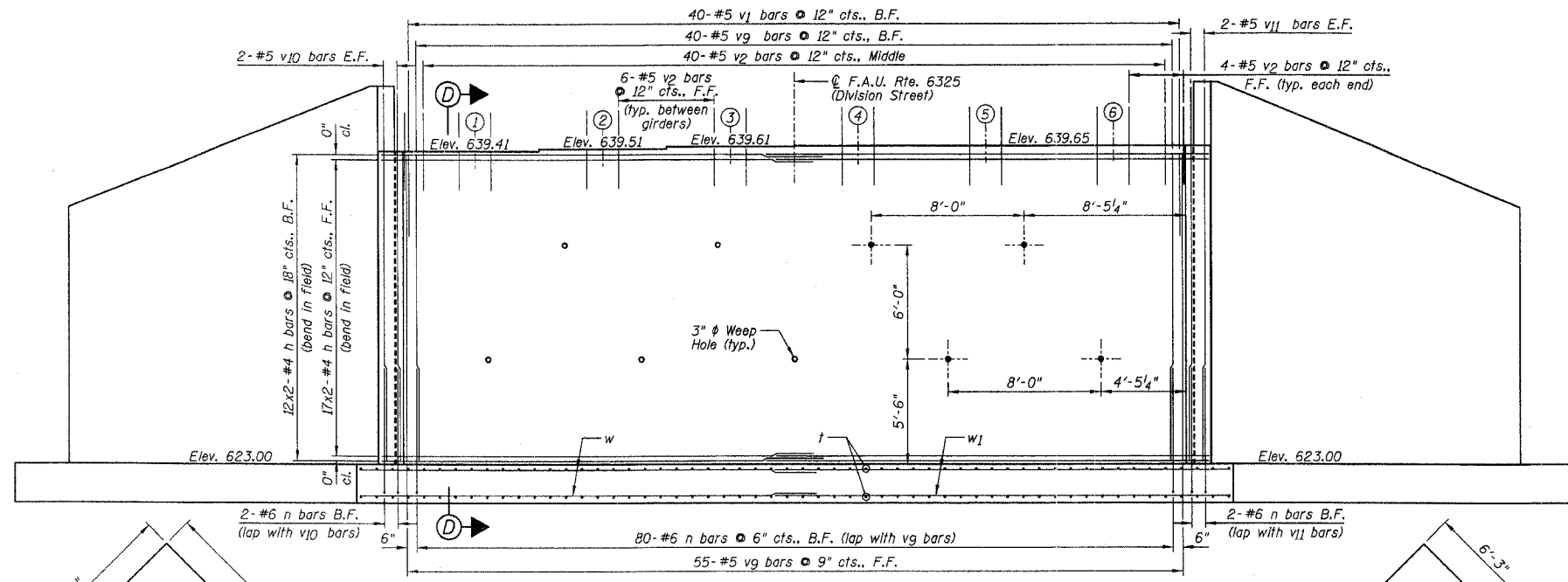
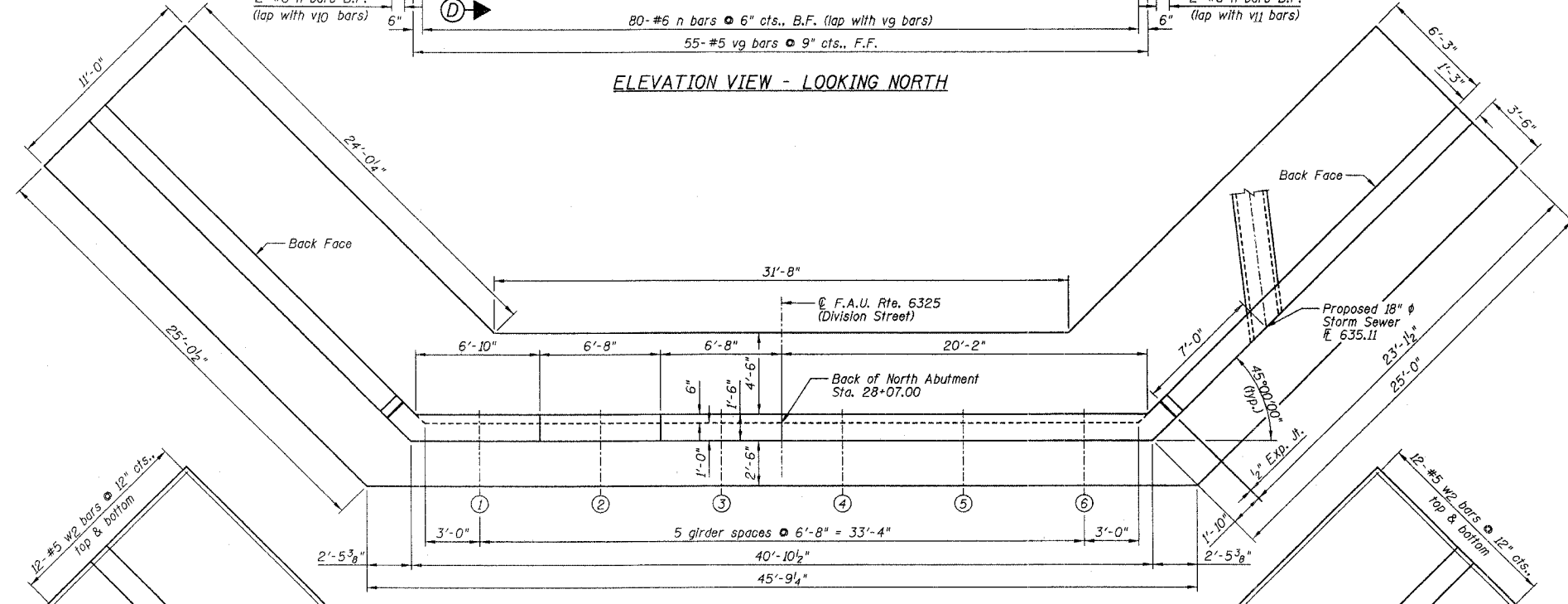


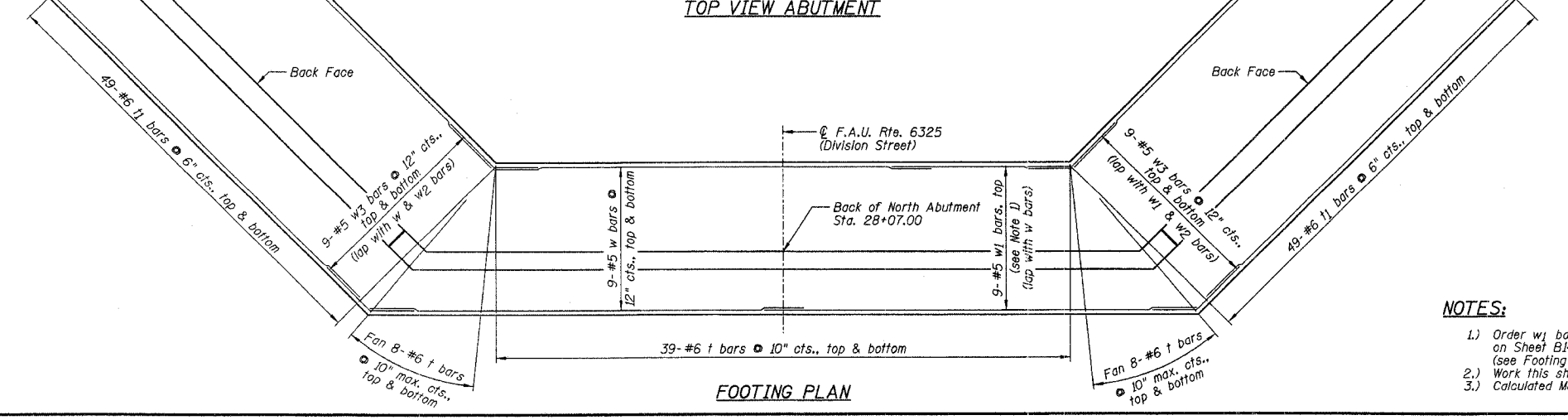
F.A.U. RTE.	SECTION	COUNTY	TOTAL SHEETS	SHEET NO.	SHEET NO. B13 OF 18 SHEETS
6325	02-00090-00-BR	LIVINGSTON	31	20	
STA.	TO STA.				
FED. ROAD DIST. NO. 7	ILLINOIS FED. AID PROJECT*				
CONTRACT NO. 87238					



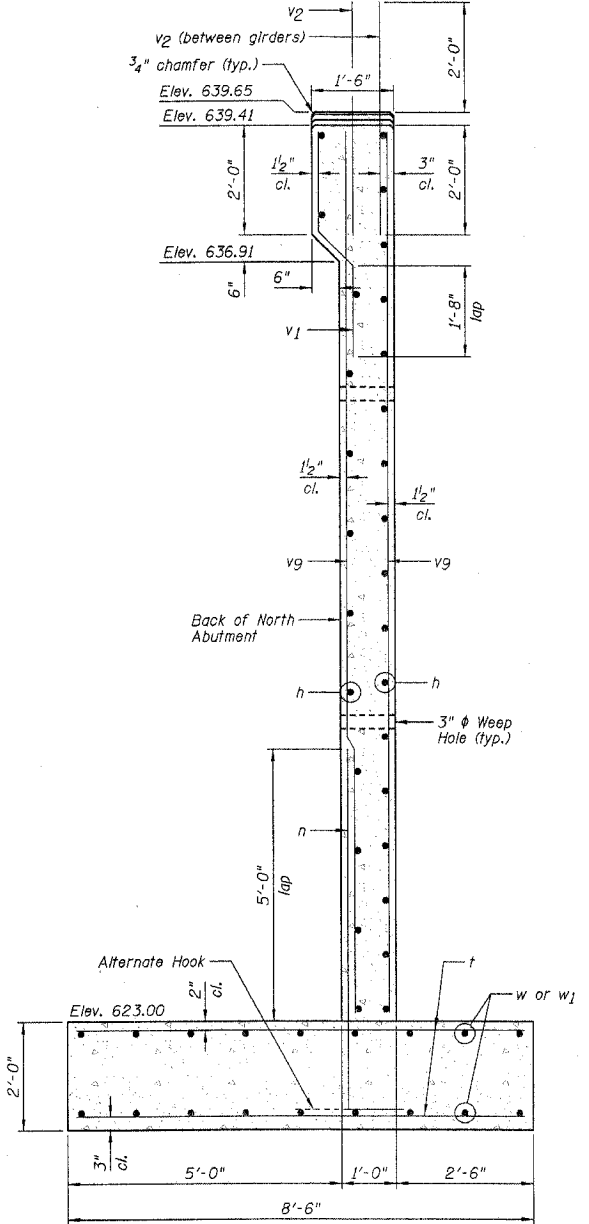
ELEVATION VIEW - LOOKING NORTH



TOP VIEW ABUTMENT



FOOTING PLAN



SECTION D-D

BAR LAPS	
#4	= 1'-11"
#5	= 2'-5"
#6	= 2'-10"
#7	= 3'-10"
#8	= 5'-1"
#9	= 6'-4"

Note: Unless noted otherwise.

- NOTES:**
- Order w1 bars full length. Cut according to Bar Cutting Diagram on Sheet B14. Use remainder of w1 bars in bottom of footing (see Footing Plan for bar locations).
  - Work this sheet with Sheet B14.
  - Calculated Maximum Soil Pressure = 5.60 ksf (service pressure).

SECTION 02-00090-00-BR  
LIVINGSTON COUNTY  
PONTIAC, ILLINOIS

**NORTH ABUTMENT**

DESIGNED BY J.M.L.	<p><b>Farnsworth GROUP</b> 3700 McGraw Drive Bloomington, Illinois 61704 309/835-8438, 309/835-1871 fax</p>	FILE NO. 24-6884
DRAWN BY D.J.M.		DATE 01-14-05
CHECKED BY M.S.W.		SHEET NO. 20 OF 31