

INDEX OF SHEETS

- SHEET 1. COVER SHEET
- SHEET 2. TYPICAL CROSS SECTION, STRUCTURAL DESIGN, BUTT JOINT DETAIL, BITUMINOUS MIXTURE TABLE
- SHEET 3. TYPICAL ENTRANCE DETAIL, MAILBOX DETAILS, SIDE ROAD RETURN, VAR. DEPTH MILL DETAIL, GENERAL NOTES

STANDARDS

- 701301-02 LANE CLOSURE 2 LANE, 2 WAY, SHORT TIME OPERATIONS
- 701306-01 LANE CLOSURE 2 LANE, 2 WAY, SLOW MOVING OPERATIONS - DAY ONLY FOR SPEEDS ≥ 45 MPH
- 701311-02 LANE CLOSURE 2 LANE, 2 WAY, MOVING OPERATIONS - DAY ONLY
- 702001-05 TRAFFIC CONTROL DEVICES
- 780001-01 TYPICAL PAVEMENT MARKINGS

STATE OF ILLINOIS
DEPARTMENT OF TRANSPORTATION

**PLANS FOR
PROPOSED LOCAL AGENCY IMPROVEMENT
FEDERAL-AID SECONDARY PROJECT**

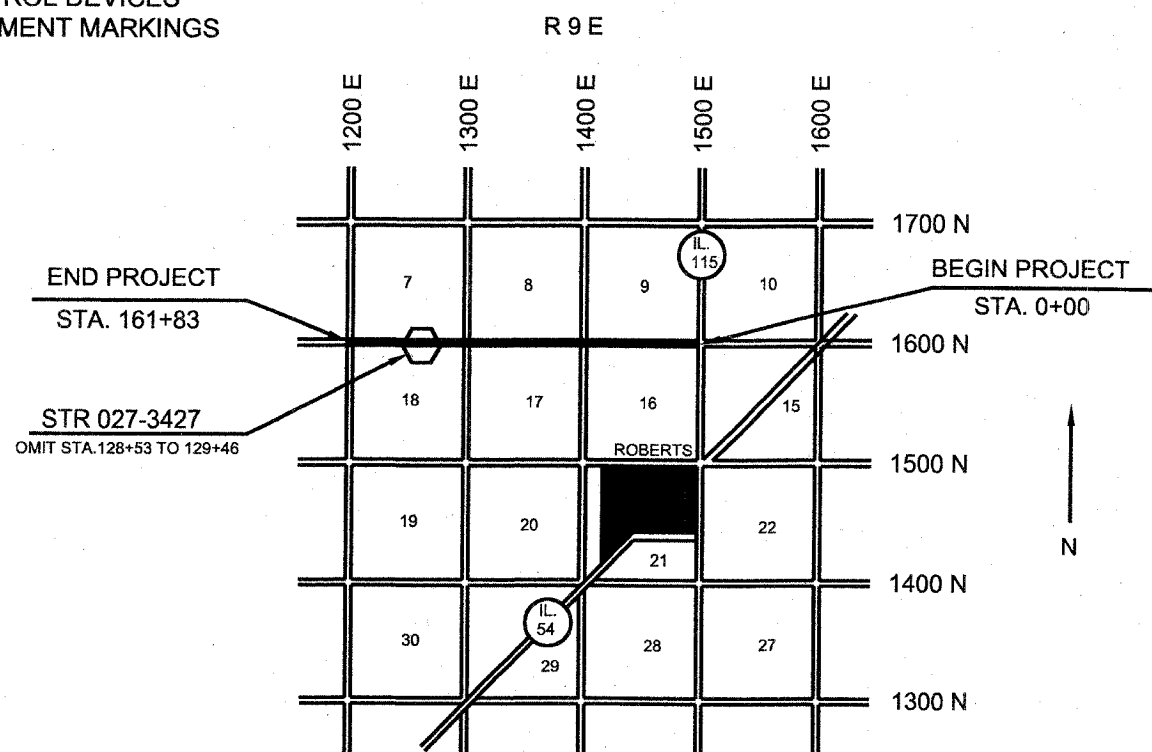
C.H.13

F.A.S. ROUTE 473 SECTION 03-00101-00-RS FORD COUNTY
PROJECT RS-473 (107)
JOB NO. C-93-076-04

FAS NO.	SECTION	COUNTY	TOTAL SHEETS	SHEET NO.
473	03 - 00101 - 00 - RS		3	1
PROJECT RS - 473 (107)				
CONTRACT # 87268				

SUMMARY OF QUANTITIES

CODE NO.	ITEM	UNIT	1000 QUANTITY
* 40600100	BITUMINOUS MATERIALS (PRIME COAT)	GALLON	2990
* 40600300	AGGREGATE (PRIME COAT)	TON	40
* 40600980	BITUMINOUS SURFACE REMOVAL - BUTT JOINT	SQ YD	255
* 40600990	TEMPORARY RAMP	SQ YD	65
* 40800040	INCIDENTAL BITUMINOUS SURFACING	TON	40
* 48101200	AGGREGATE SHOULDERS, TYPE B	TON	1200
70100460	TRAFFIC CONTROL AND PROTECTION, STANDARD 701306	L SUM	1
* 70300100	SHORT- TERM PAVEMENT MARKING	FOOT	3220
* 78001110	PAINT PAVEMENT MARKING - LINE 4"	FOOT	8120
* X4066414	BITUMINOUS CONCRETE SURFACE COURSE, SUPERPAVE, MIXTURE C, N50	TON	3325
* X4066765	LEVELING BINDER (MACHINE METHOD), SUPERPAVE N50	TON	2770
*	INDICATES SEE SPECIAL PROVISIONS		



GROSS LENGTH = 16,183' = 3.06 MI.
NET LENGTH = 16,090' = 3.05 MI.

THE PLANS FOR THIS SECTION WERE APPROVED BY THE DEPARTMENT AS SECTION 76-00045-00-RS, SECTION 84-00045-01-RS & SECTION 03-00101-00-RS MAJOR COLLECTOR

THE ACCEPTANCE OF THIS PROJECT IS BASED ON THE MINIMUM DESIGN STANDARDS FOR THE LOCAL AGENCY PAVEMENT PRESERVATION (L.A.P.P.) POLICY

APPROVED	<u>3/21/2005</u>
	<i>[Signature]</i>
	LOCAL AGENCY OFFICIAL
PASSED	<u>3/23/05</u>
	<i>[Signature]</i>
	DISTRICT ENGINEER OF LOCAL ROADS & STREETS
APPROVED	<u>3/23/05</u>
	<i>[Signature]</i>
	REGION 2 ENGINEER
	STATE OF ILLINOIS DEPARTMENT OF TRANSPORTATION

UTILITIES

UTILITIES ON THIS SECTION AT VARIOUS LOCATIONS INCLUDES TO THE BEST OF OUR KNOWLEDGE:

VERIZON TELEPHONE COMPANY (UNDERGROUND)
EASTERN ILLINI ELECTRIC (OVERHEAD POWER)

CONTRACTORS OR SUBCONTRACTORS SHALL CONTACT J.U.L.I.E. (1-800-892-0123) AT LEAST 72 HOURS PRIOR TO ANY EXCAVATION OR DRIVING FOR UTILITIES LOCATION

CONSTRUCTION TYPE CODE IOOO

CURRENT (2005) ADT = 125 - 88% PC
9% SU
3% MU

DESIGN ADT (2015) = 200

DESIGN SPEED = 50 MPH

[Signature]
ILLINOIS PROFESSIONAL NO. 062-035801

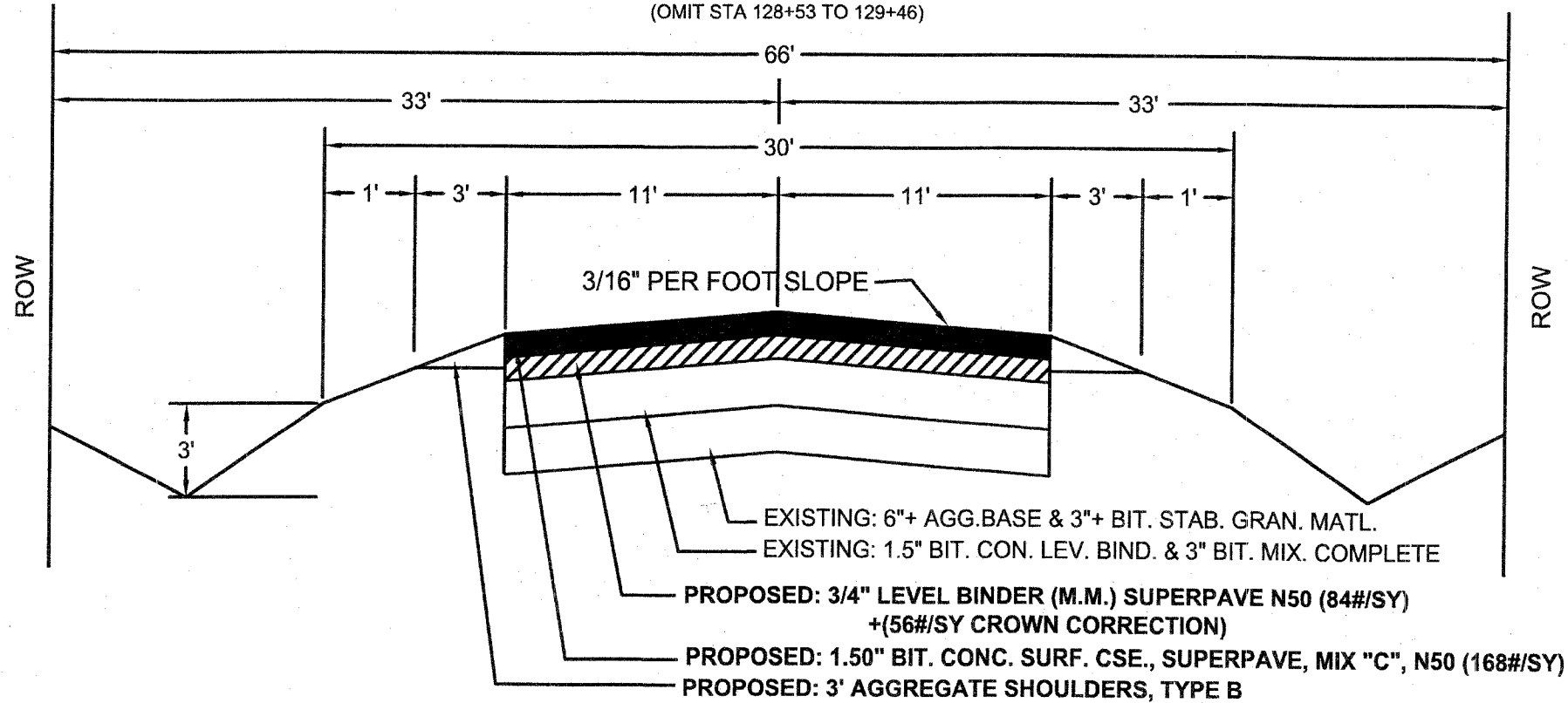


EXPIRES 11-30-2005

JOB NO. C-93-076-04
CONTRACT NO. 87268

TYPICAL CROSS SECTION
SECTION 03-00101-00-RS (SHAMBROOK ROAD)
STATION 0+00 TO 161+83
(OMIT STA 128+53 TO 129+46)

FAS NO.	SECTION	COUNTY	TOTAL SHEETS	SHEET NO.
473	03-00101-00-RS		3	2
PROJECT RS-473 (107)				
CONTRACT # 87268				



STRUCTURAL DESIGN
STA. 0+00 TO STA. 161+83
SEC. 03-00101-00-RS

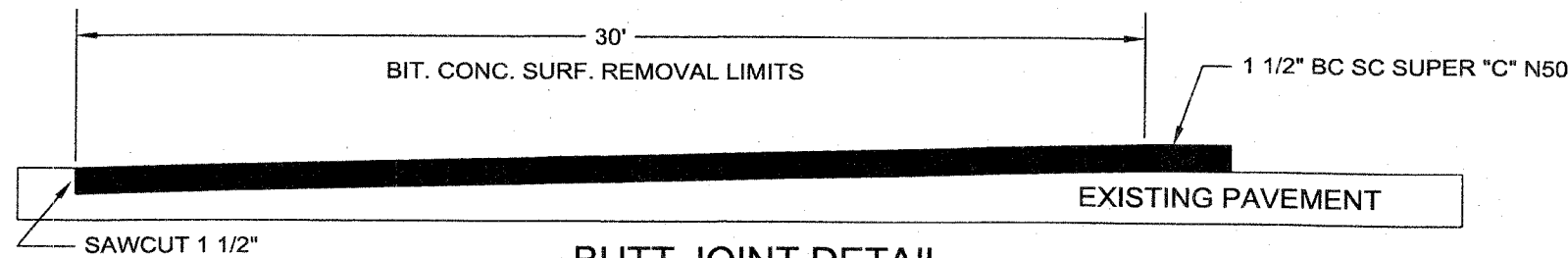
STRUCTURAL DESIGN TRAFFIC YEAR	2015
CURRENT A.D.T.	125
A.D.T. 2015	200
P.C.	176
S.U.	18
M.U.	6
CLASS	IV
MINIMUM SOIL SUPPORT IBR	3
TRAFFIC FACTOR	0.007
Dt REQUIRED	1.9

EXISTING BASE:

6.0"+ AGGREGATE BASE (CRUSHED)	6.0" X 0.05 = 0.30
3.0"+ BIT. STAB. GRAN. BSE.	3.0" X 0.06 = 0.18
1.5"+BIT. CONC. LEV.BIND.	1.5" X 0.23 = 0.34
3.0"+BIT. MIX COMPLETE	3.0" X 0.30 = 0.90
SUBTOTAL EXISTING	1.72

PROPOSED:

.75" LEVEL BINDER, SUPERPAVE N50	0.75" X 0.40 = 0.30
1.50" SURF. CSE., SUPERPAVE "C" N50	1.25" X 0.40 = 0.60
Dt TOTAL	2.62



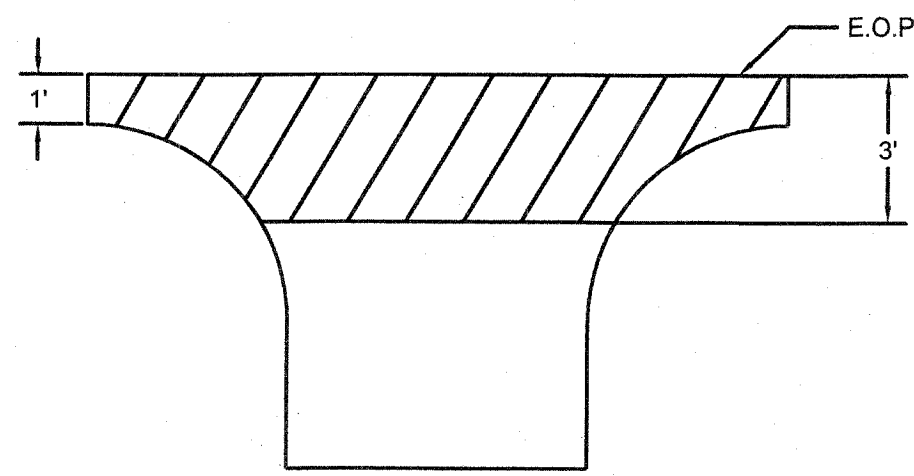
BUTT JOINT DETAIL

3 LOCATIONS
0+00 TO 0+30 = 30'
128+23 TO 128+53 = 30'
129+46 TO 129+76 = 30'

BITUMINOUS MIXTURE TABLE		
	LEVEL BINDER	SURFACE
PG GRADE	PG 58-22	PG 58-22
MAX. % RAP *	25%	15 %
DESIGN AIR VOIDS	4.0 % @ N50	4.0 % @ N50
MIX COMPOSITION	IL 9.5	IL 9.5 OR 12.5
FRICTION AGGREGATE		MIXTURE "C"
DENSITY CONTROL METHOD		CORRELATION

* IF RAP OPTION IS SELECTED, THE ASPHALT CEMENT GRADE MAY NEED TO BE ADJUSTED, THIS WILL BE DETERMINED BY THE ENGINEER.

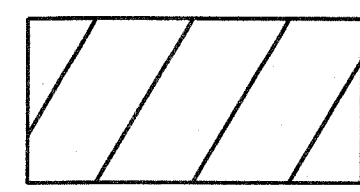
FAS NO.	SECTION	COUNTY	TOTAL SHEETS	SHEET NO.
473	03-00101-00-RS		3	3
PROJECT RS - 473 (107)				
CONTRACT # 87268				



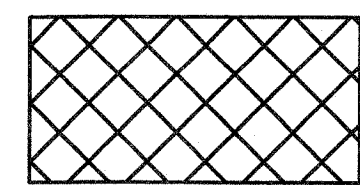
TYPICAL FIELD & PRIVATE ENTRANCE

19 EACH

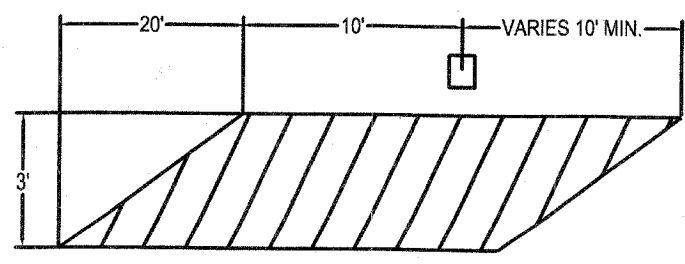
LT. STA.	RT. STA.
26+71	0+50
33+42	67+26
67+26	80+08
80+10	93+18
93+18	106+06
119+49	115+87
130+68	123+95
146+88	127+08
	130+23
	145+56
	154+20



AREA TO BE CONSTRUCTED DURING MAINLINE PAVING OPERATIONS
SLOPE = 3/4" PER FOOT

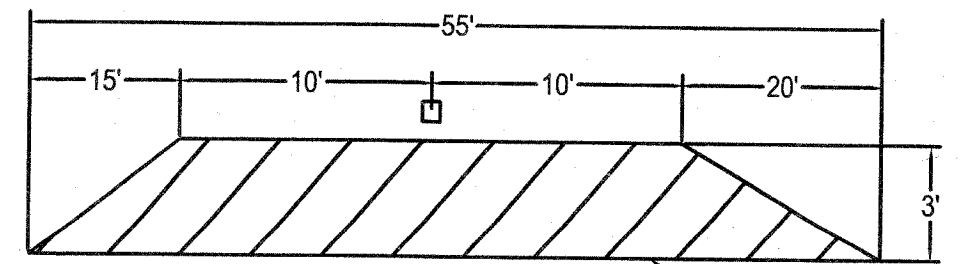


AREA TO BE PAID AS INCIDENTAL BITUMINOUS SURFACING



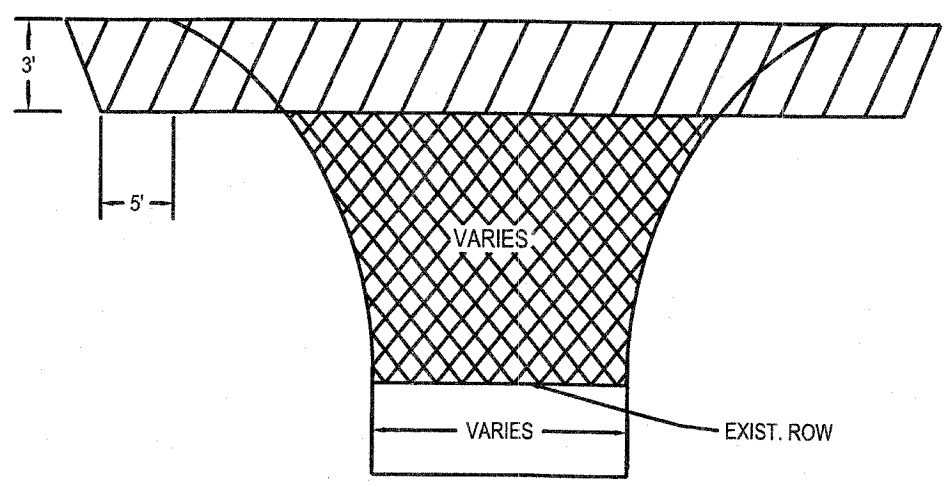
TYPICAL MAILBOX FOLLOWING

1 EACH
154+37 RT



TYPICAL MAILBOX TURN OUT

1 EACH
26+71 RT



TYPICAL SIDE ROAD RETURN

5 EACH
STA. 53+84 LT & RT
STA. 106+03 LT
STA. 161+16 LT & RT

NOTES

1. USE SAME MAINLINE MATERIAL FOR SIDE ROAD RETURNS, FIELD & PRIVATE ENTRANCES, AND MAILBOXES.
2. AGGREGATE SHOULDERS TO BE PLACED BEHIND SIDE ROAD RETURNS, FIELD & PRIVATE ENTRANCES, AND MAILBOXES AS DIRECTED BY THE ENGINEER.
3. SHORT TERM PAVEMENT MARKINGS TO BE REMOVED BY FORD COUNTY PERSONNEL.
4. EXISTING BRIDGE STRUCTURES SHALL NOT BE OVERLAYED.
5. THE FOLLOWING APPLICATION RATES HAVE BEEN ASSUMED IN CALCULATING QUANTITIES:

GRANULAR MATERIALS	2.00 TON / CU YD
BIT MATL (PR CT)	0.075 GAL / SQ YD
AGGREGATE (PR CT)	0.001 TON / SQ YD
BIT CONC	112 # / SQ YD / INCH
SHORT TERM PVMT MKING	4 FT / 40 FT OF APPL.