

INDEX OF SHEETS
 1. Cover Sheet
 2. Typical Cross Sections
 3. Detail Sheet
 Standards: 406201, 701001-01, 701006-02, 701011-01, 701201-02
 701301-02, 701306-01, 701326-02, 702001-05,

STATE OF ILLINOIS

DEPARTMENT OF TRANSPORTATION

DIVISION OF HIGHWAYS

PLANS FOR PROPOSED

McLEAN COUNTY FEDERAL AID SECONDARY (STP-SR)

LEXINGTON-LEROY RD (CH 21)

F.A.S. 489 SEC. 02-00044-07-WR

PROJECT #SR-489(106)

JOB #C-93-031-05

COUNTY HWY DIST. NO.	SECTION	COUNTY	TOTAL SHEETS	SHEET NUMBER
21	*	McLEAN	3	1
FED. RD. DIST. #7 ILLINOIS PROJECT #				
* 02-00044-07-WR CONTRACT NO. 87301				

McLEAN COUNTY FEDERAL AID SECONDARY (STP-SR)

LEXINGTON-LEROY RD (CH 21)

F.A.S. 489 SEC. 02-00044-07-WR

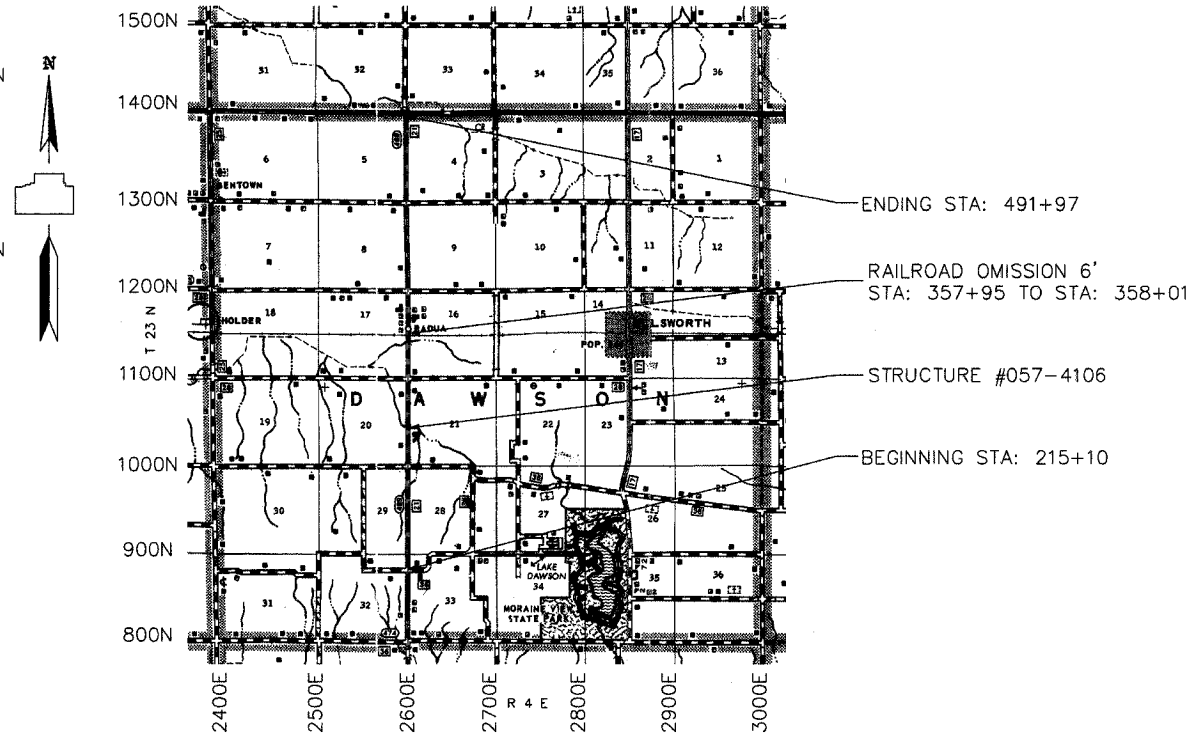
PROJECT #SR-489(106)

JOB #C-93-031-05

SUMMARY OF QUANTITIES

CODE#	ITEM	CONST. TYPE CODE I-000-2A TOTAL QUANTITY	UNIT
*20200500	EARTH EXCAVATION (WIDENING)	1538	CU YD
40600100	BITUMINOUS MATERIALS (PRIME COAT)	7500	GALLON
40600300	AGGREGATE (PRIME COAT)	390	TON
40600980	BITUMINOUS SURFACE REMOVAL-BUTT JOINT	649	SQ YD
40600990	TEMPORARY RAMP	119	SQ YD
40800010	BITUMINOUS MATERIALS (PRIME COAT)	750	GALLON
40800040	INCIDENTAL BITUMINOUS SURFACING	400	TON
*44300300	AREA REFLECTIVE CRACK CONTROL TREATMENT, SYSTEM A	73816	SQ YD
48101200	AGGREGATE SHOULDERS TYPE B	7000	TON
*X3560100	BITUMINOUS CONCRETE BASE COURSE WIDENING, SUPERPAVE, 6 INCH	9228	SQ YD
*X4066414	BITUMINOUS CONCRETE SURFACE COURSE SUPERPAVE, MIX "C", N50	6500	TON
*X4066614	BITUMINOUS CONCRETE BINDER COURSE SUPERPAVE, IL 19.0, N50	9400	TON
*X4066765	LEVELING BINDER (MACHINE METHOD) SUPERPAVE, N50	2550	TON
*Z0048665	RAILROAD PROTECTIVE LIABILITY INSURANCE	1	L SUM

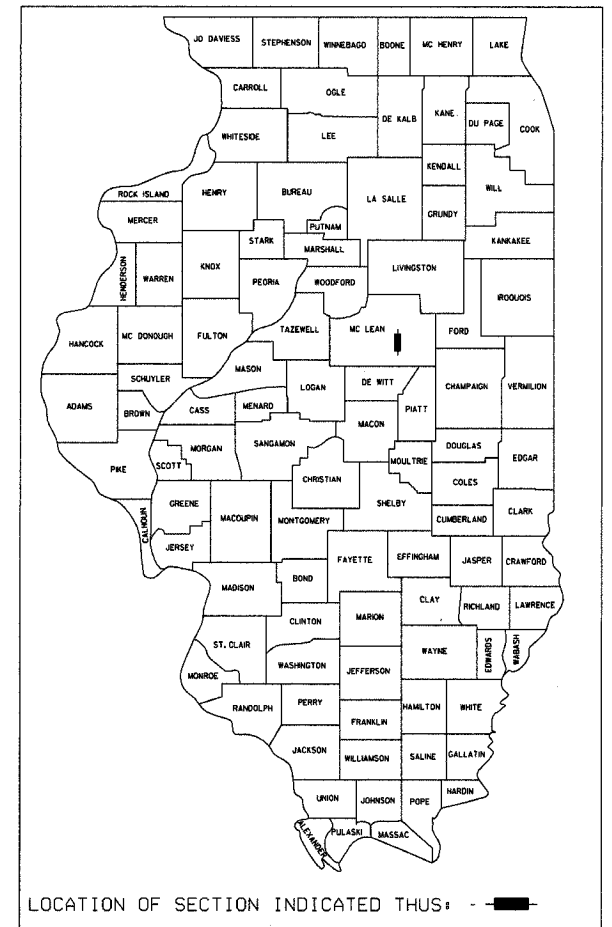
* = SPECIAL PROVISION



APPROXIMATE SCALE: 0 1 MILE

NOTE: THE TOTAL LENGTH OF THE PROPOSED PROJECT IS 27,687 FEET WITH A NET LENGTH OF 27,681 FEET (5.2426 MILES)

NOTE: THESE PLANS MEET THE MINIMUM REQUIREMENTS FOR A 3-R IMPROVEMENT.



LOCATION OF SECTION INDICATED THUS: - - -

CLASS III ROAD DESIGN
 DESIGN SPEED: 50 MPH
 CURRENT ADT: 1300 (2005)
 DESIGN ADT: 1586 (2015)

CONTRACT NO. = 87301



John E. Mitchell
 ILLINOIS PROFESSIONAL ENGINEER #31506
 EXPIRES 11-30-05

APPROVED	<i>John E. Mitchell</i>	2005
COUNTY ENGINEER		
APPROVED	<i>John E. Mitchell</i>	2005
DISTRICT OF LOCAL ROADS AND STREETS		
APPROVED	<i>John E. Mitchell</i>	2005
REGION 2 ENGINEER		
STATE OF ILLINOIS DEPARTMENT OF TRANSPORTATION		