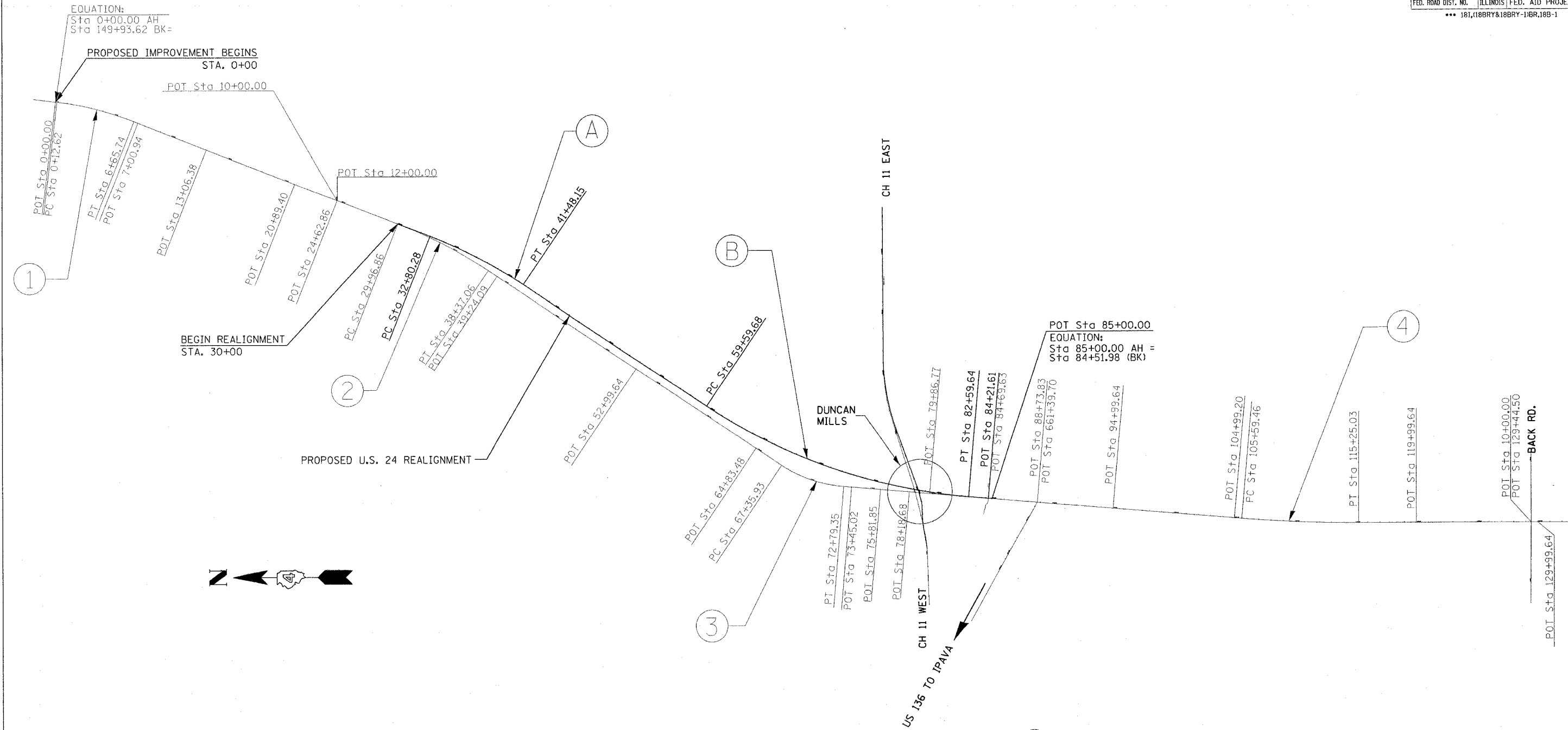


F.A.P. RTE.	SECTION	COUNTY	TOTAL SHEETS	SHEET NO.
317	***	FULTON	684	42
STA.		TO STA.		
FED. ROAD DIST. NO.		ILLINOIS	FED. AID PROJECT	
*** 181,118BRY&18BRY-1BR,18B-1				



1

2

3

4

A

B

EXISTING CURVE US24EXCL4  
 P.I. STA. = 3+40.97  
 $\Delta = 14^\circ 39' 11''$  (RT)  
 $D = 2^\circ 14' 37''$   
 $R = 2,553.78'$   
 $T = 328.35'$   
 $L = 653.12'$   
 $E = 21.02'$   
 $e = \text{-----}$   
 $T.R. = \text{-----}$   
 $S.E. RUN = \text{-----}$   
 P.C. STA. = 0+12.62  
 P.T. STA. = 6+65.74

EXISTING CURVE US24EXCL5  
 P.I. STA. = 34+18.62  
 $\Delta = 12^\circ 25' 53''$  (RT)  
 $D = 1^\circ 28' 47''$   
 $R = 3,872.43'$   
 $T = 421.75'$   
 $L = 840.20'$   
 $E = 22.90'$   
 $e = \text{-----}$   
 $T.R. = \text{-----}$   
 $S.E. RUN = \text{-----}$   
 P.C. STA. = 29+96.86  
 P.T. STA. = 38+37.06

EXISTING CURVE US24EXCL6  
 P.I. STA. = 70+13.57  
 $\Delta = 28^\circ 56' 50''$  (LT)  
 $D = 5^\circ 19' 37''$   
 $R = 1,075.60'$   
 $T = 277.64'$   
 $L = 543.42'$   
 $E = 35.26'$   
 $e = \text{-----}$   
 $T.R. = \text{-----}$   
 $S.E. RUN = \text{-----}$   
 P.C. STA. = 67+35.93  
 P.T. STA. = 72+79.35

EXISTING CURVE US24EXCL7  
 P.I. STA. = 110+42.54  
 $\Delta = 4^\circ 52' 16''$  (LT)  
 $D = 0^\circ 30' 16''$   
 $R = 11,357.62'$   
 $T = 483.08'$   
 $L = 965.57'$   
 $E = 10.27'$   
 $e = \text{-----}$   
 $T.R. = \text{-----}$   
 $S.E. RUN = \text{-----}$   
 P.C. STA. = 105+59.46  
 P.T. STA. = 115+25.03

PROPOSED CURVE US24PROCL5  
 P.I. STA. = 37+15.93  
 $\Delta = 12^\circ 25' 53''$  (RT)  
 $D = 1^\circ 25' 57''$   
 $R = 4,000.00'$   
 $T = 435.64'$   
 $L = 867.87'$   
 $E = 23.65'$   
 $e = 3.6\%$   
 $T.R. = 40.00'$   
 $S.E. RUN = 200.00'$   
 P.C. STA. = 32+80.28  
 P.T. STA. = 41+48.15

PROPOSED CURVE US24PROCL6  
 P.I. STA. = 71+34.68  
 $\Delta = 28^\circ 53' 56''$  (LT)  
 $D = 1^\circ 15' 23''$   
 $R = 4,560.00'$   
 $T = 1,175.00'$   
 $L = 2,299.97'$   
 $E = 148.95'$   
 $e = 3.3\%$   
 $T.R. = 41.28'$   
 $S.E. RUN = 196.85'$   
 P.C. STA. = 59+59.68  
 P.T. STA. = 82+59.64

NOTE:  
 SEE FOLLOWING SHEET FOR DUNCAN MILLS AND  
 CH 11 EAST & WEST DETAIL

REVISIONS	
NAME	DATE

ILLINOIS DEPARTMENT OF TRANSPORTATION

**GENERAL LOCATION  
 DIAGRAM  
 U.S. 24**

SCALE: VERT. \_\_\_\_\_  
 HORIZ. \_\_\_\_\_

DATE \_\_\_\_\_

DRAWN BY \_\_\_\_\_  
 CHECKED BY \_\_\_\_\_

PLOT DATE = 4/7/2006  
 PLOT SCALE = 1/8" = 100.0000' / IN.  
 USER NAME = hugginsd