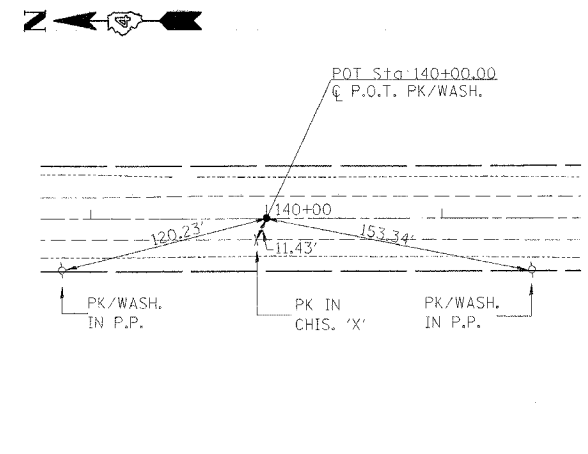
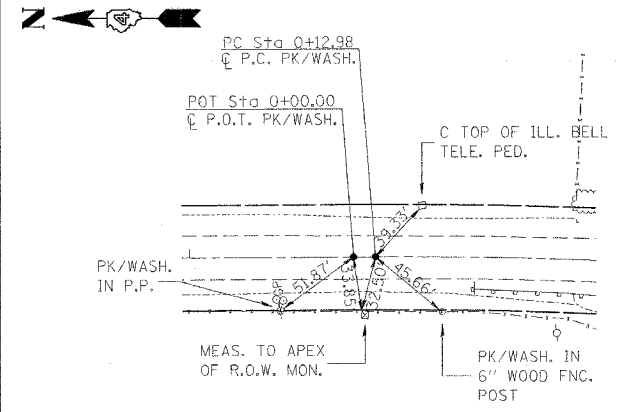


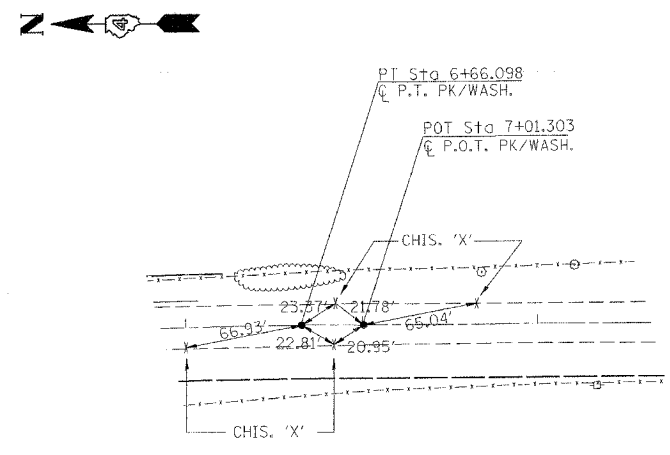
F.A.P. RTE.	SECTION	COUNTY	TOTAL SHEETS	SHEET NO.
317	***	FULTON	684	49
STA.		TO STA.		
FED. ROAD DIST. NO.		ILLINOIS FED. AID PROJECT		
		*** 18T, 18BRY & 18BRY-1BR, 18B-1		



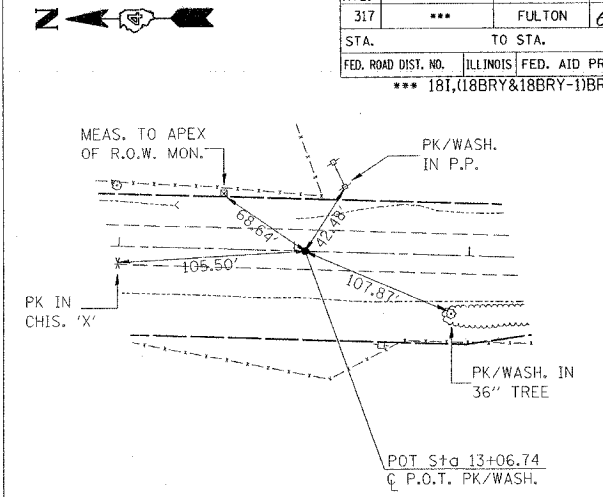
P.O.T. STA. 140+00.00 US 24 & US 136



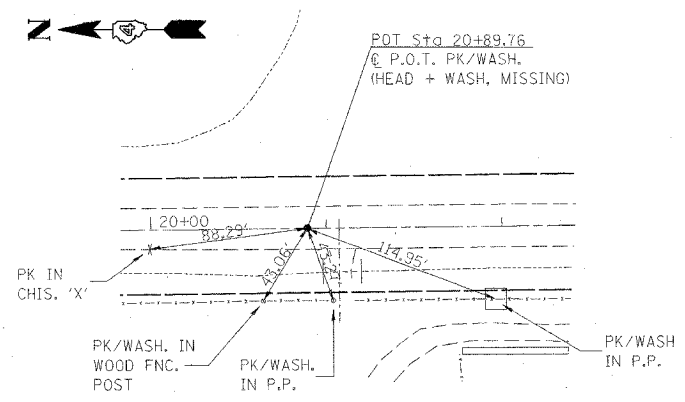
P.O.T. STA. 0+00.00 & P.C. STA. 0+12.98 US 24 & US 136



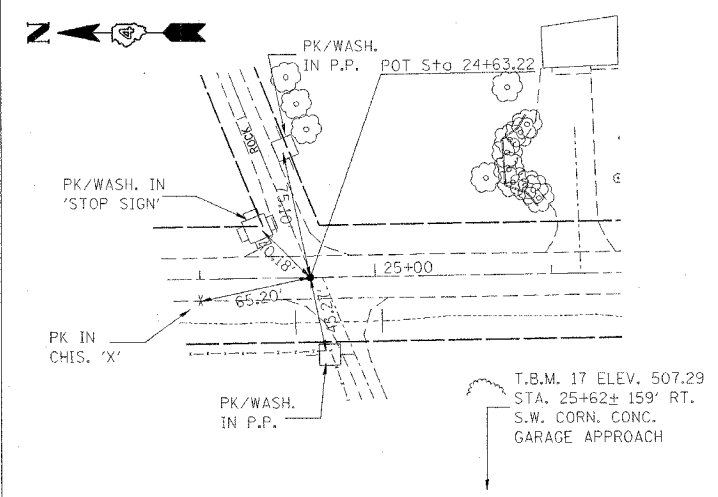
P.T. STA. 6+66.098 & P.O.T. STA. 7+01.303 US 24 & US 136



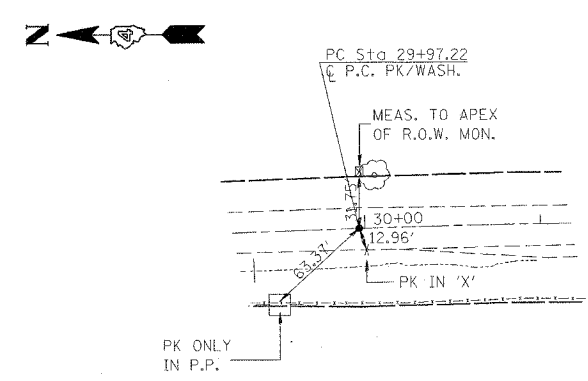
P.O.T. STA. 13+06.74 US 24 & US 136



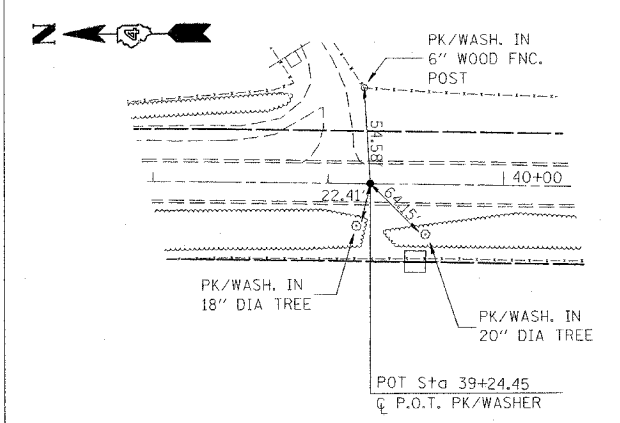
P.O.T. STA. 20+89.76 US 24 & US 136



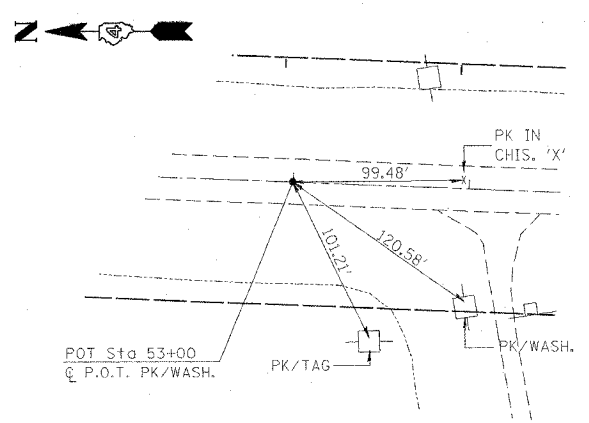
P.O.T. STA. 24+63.22 US 24 & US 136



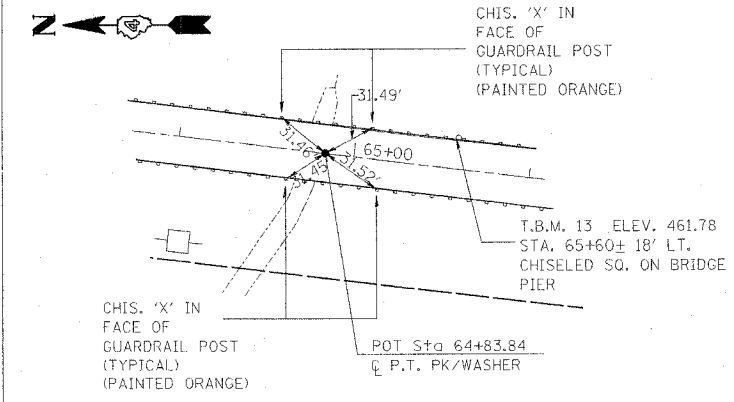
P.C. STA. 29+97.22 US 24 & US 136



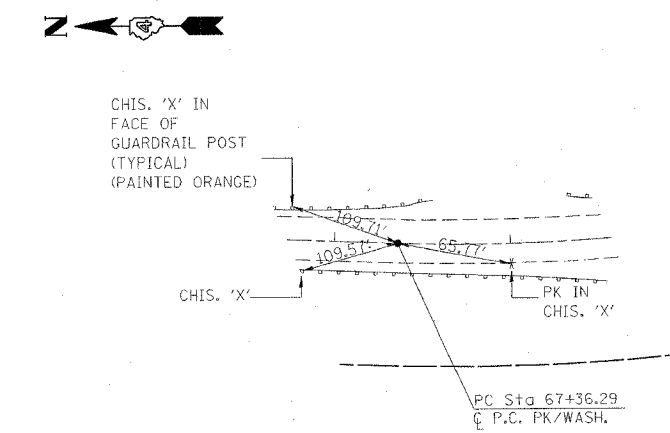
P.O.T. STA. 39+24.45 US 24 & US 136



P.O.T. STA. 53+00 US 24 & US 136



P.T. STA. 64+83.84 US 24 & US 136



P.C. STA. 67+36.29 US 24 & US 136

REVISIONS	
NAME	DATE

ILLINOIS DEPARTMENT OF TRANSPORTATION

REFERENCE TIES  
US 24

SCALE: VERT. HORIZ.  
DATE

DRAWN BY  
CHECKED BY

PLOT DATE = 4/7/2005  
 PLOT SCALE = 50.0000' / 1" IN.  
 USER NAME = haggstad