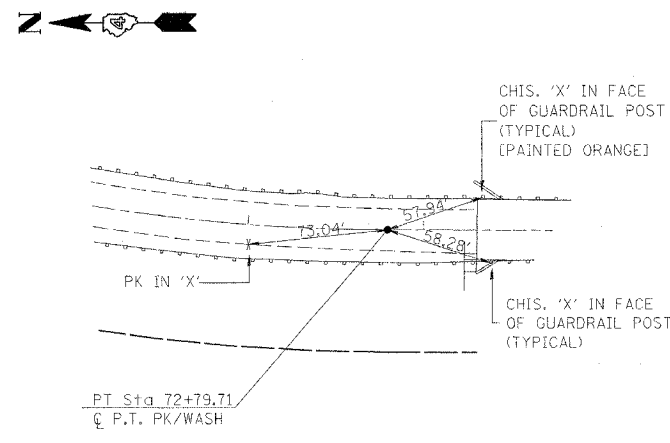
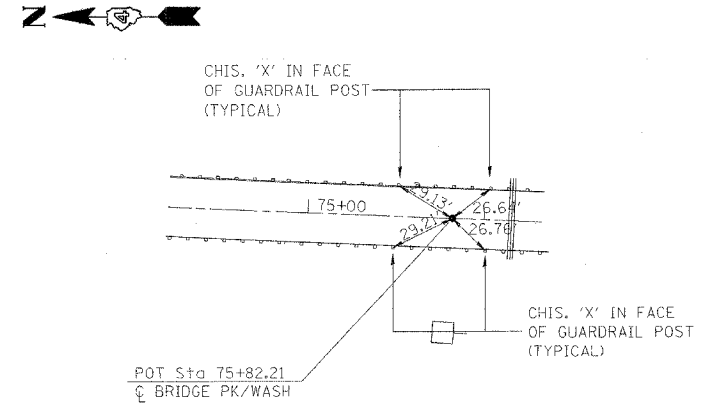


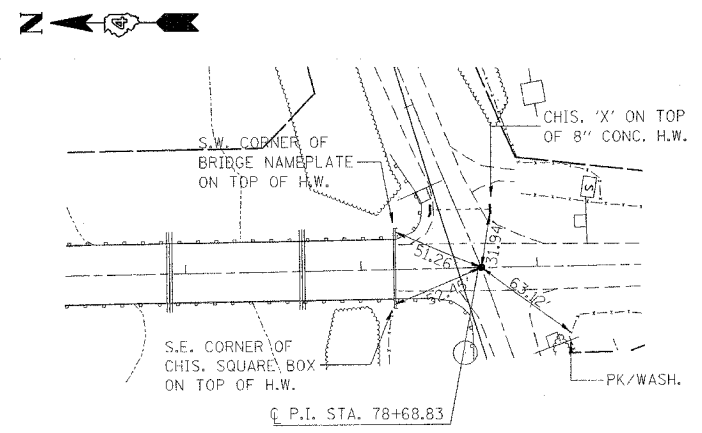
F.A.P. RTE.	SECTION	COUNTY	TOTAL SHEETS	SHEET NO.
317	...	FULTON	684	50
STA.		TO STA.		
FED. ROAD DIST. NO.		ILLINOIS FED. AID PROJECT		
...		181,188BRY&188BRY-1DBR,188-1		



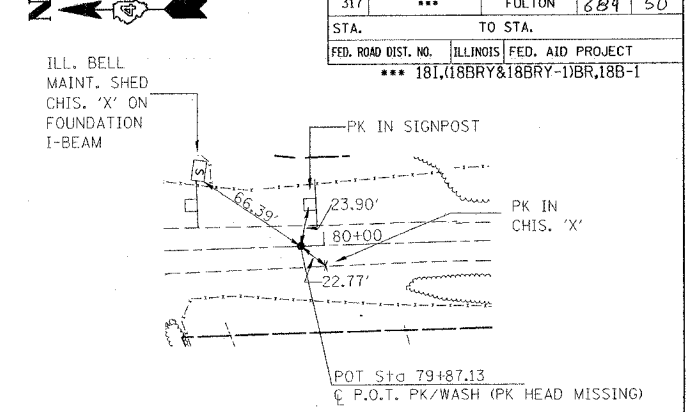
P.T. STA. 72+79.71 US 24 & US 136



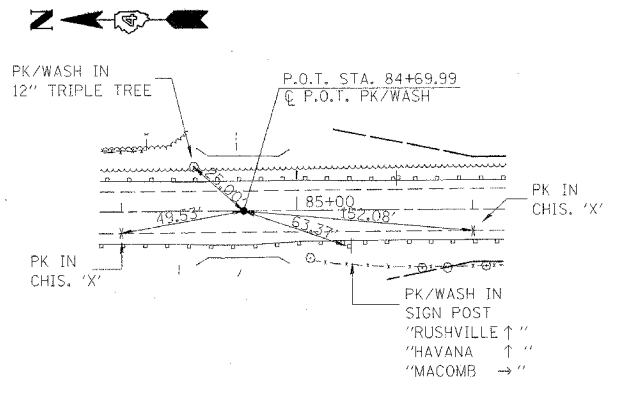
P.O.T. STA. 75+82.21 US 24 & US 136



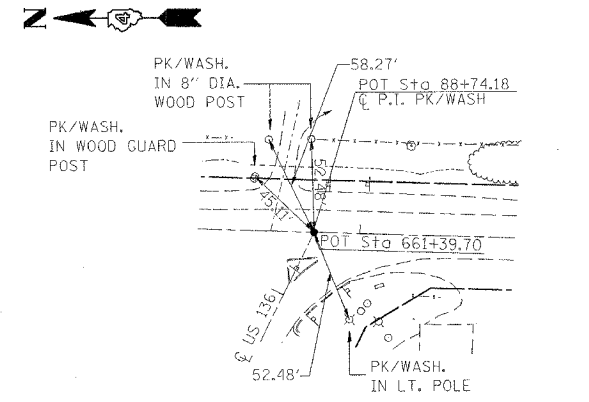
P.I. STA. 78+68.83 US 24 US 136



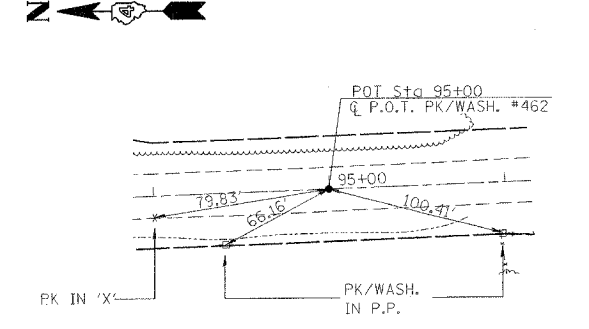
P.I. STA. 79+87.13 F.A.P. 315 & 317



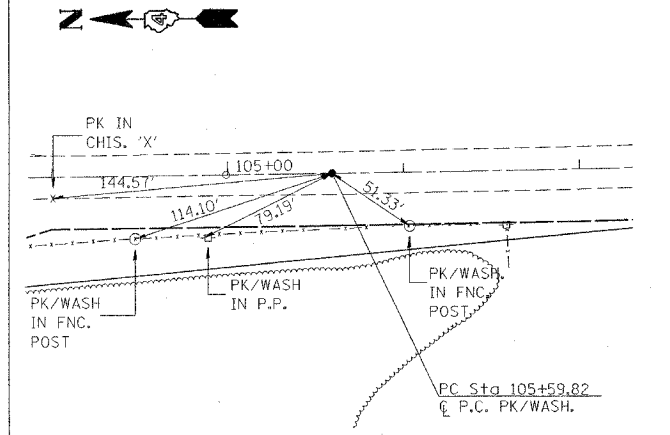
P.O.T. STA. 84+69.99 US 24 & US 136



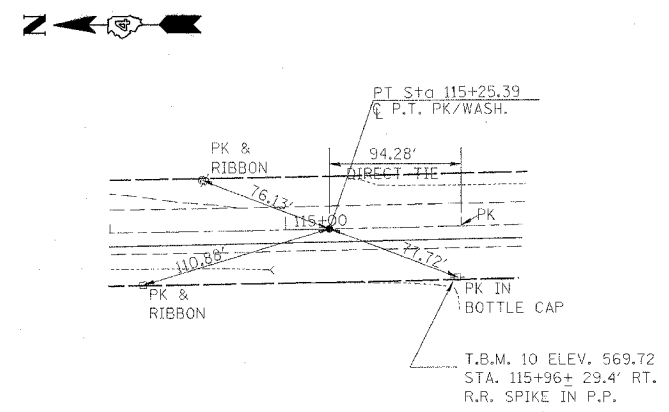
P.I. STA. 88+74.18 US 24 & US 136



P.O.T. STA. 95+00 US 24 & US 136



P.C. STA. 105+59.82 FAP 315 & 317



P.T. STA. 115+25.39 US 24 & US 136

REVISIONS	
NAME	DATE

ILLINOIS DEPARTMENT OF TRANSPORTATION

REFERENCE TIES
US 24

SCALE: VERT.
HORIZ.
DATE

DRAWN BY
CHECKED BY

PLOT DATE: 4/7/2005
 FILE NAME: S:\GIS\WORK\STDR\US\GSD\01\88753\Phase II PowerDraft Files\Plan Details\Reference Ties.dgn
 PLOT SCALE: 1"=50'
 USER NAME: jrgg