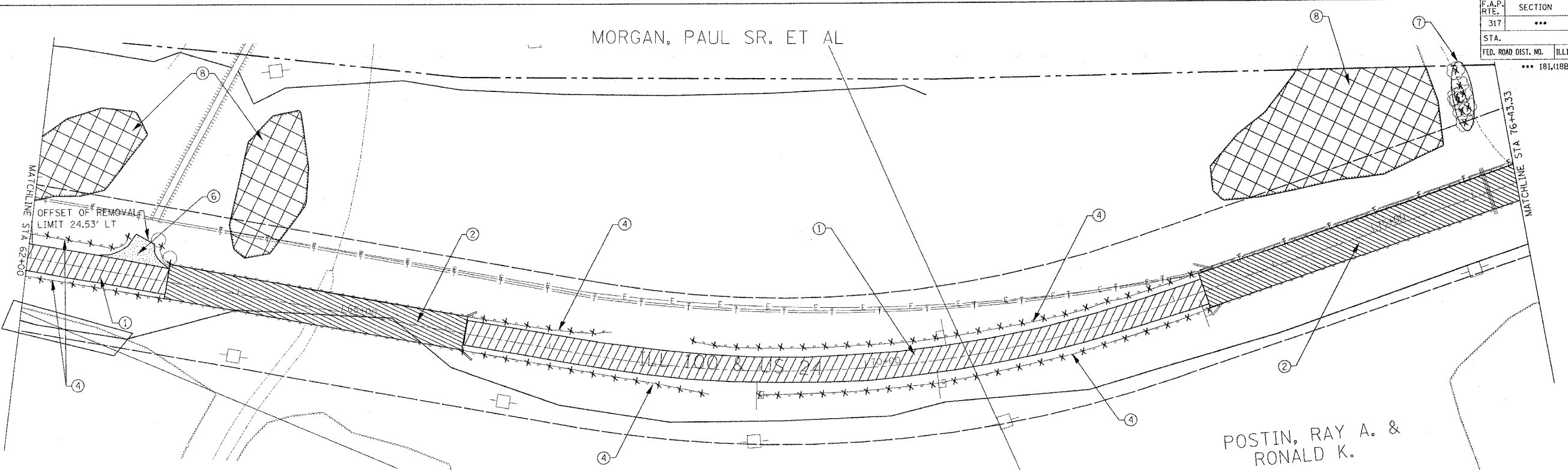


F.A.P. RTE.	SECTION	COUNTY	TOTAL SHEETS	SHEET NO.
317	...	FULTON	684	53
STA.	TO STA.			
FED. ROAD DIST. NO.	ILLINOIS	FED. AID PROJECT		
	*** 181,188RY&188RY-188R,188-1			

MORGAN, PAUL SR. ET AL

POSTIN, RAY A. & RONALD K.



REMOVAL LEGEND

- | | |
|---|------------------------------------|
| ① PAVEMENT REMOVAL | ⑨ CONCRETE HEADWALL REMOVAL |
| ② STRUCTURE REMOVAL | ⑩ REMOVE EXISTING CULVERTS |
| ③ BITUMINOUS SURFACE REMOVAL - BUTT JOINT | ⑪ FENCE REMOVAL |
| ④ GUARDRAIL REMOVAL | ⑫ DRIVEWAY PAVEMENT REMOVAL |
| ⑤ BUILDING REMOVAL | ⑬ REMOVE EXISTING INLET |
| ⑥ REMOVAL INCLUDED IN EARTH EXCAVATION | ⑭ CURB AND GUTTER REMOVAL |
| ⑦ TREE REMOVAL (UNIT) | ⑮ ISLAND REMOVAL |
| ⑧ TREE REMOVAL (ACRES) | ⑯ UNDERGROUND STORAGE TANK REMOVAL |

MORGAN, PAUL SR. ET AL

MORGAN, PAUL SR. ET AL

POSTIN, RAY A. & RONALD K.

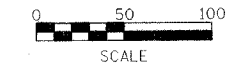
OFFSET OF REMOVAL LIMIT 52.87' RT

REVISIONS	
NAME	DATE

ILLINOIS DEPARTMENT OF TRANSPORTATION

**REMOVAL ITEMS
STA 47+00 TO STA 76+43**

SCALE: VERT. _____
HORIZ. _____
DATE _____ DRAWN BY _____
CHECKED BY _____



PLOT DATE = 4/7/2005
FILE NAME = c:\projects\us24\spoon.plt\shhets_removal.dgn
SCALE = 1/8"=1'-0"
USER NAME = rjg