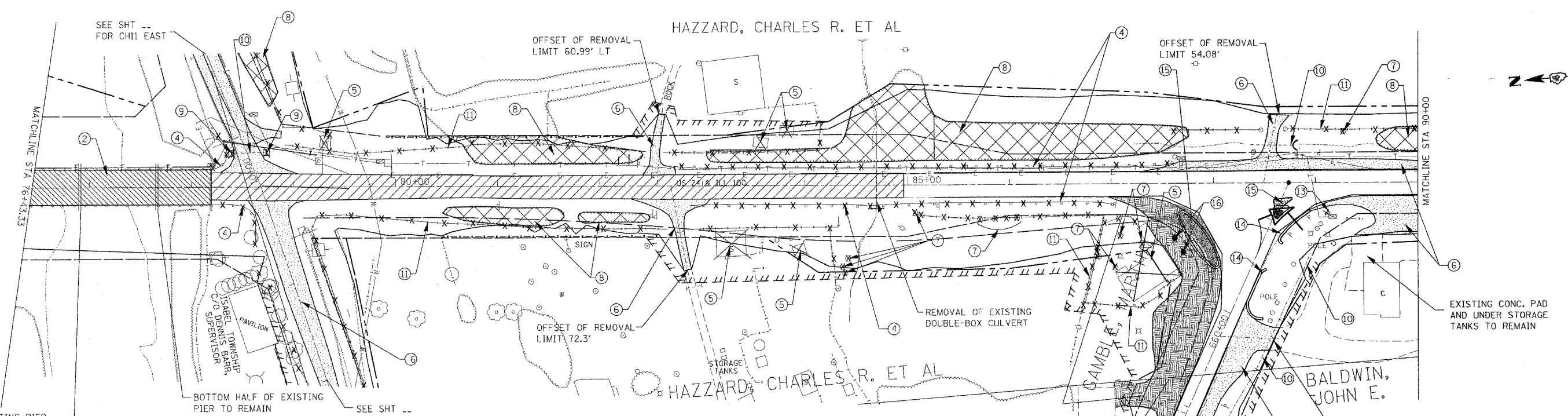
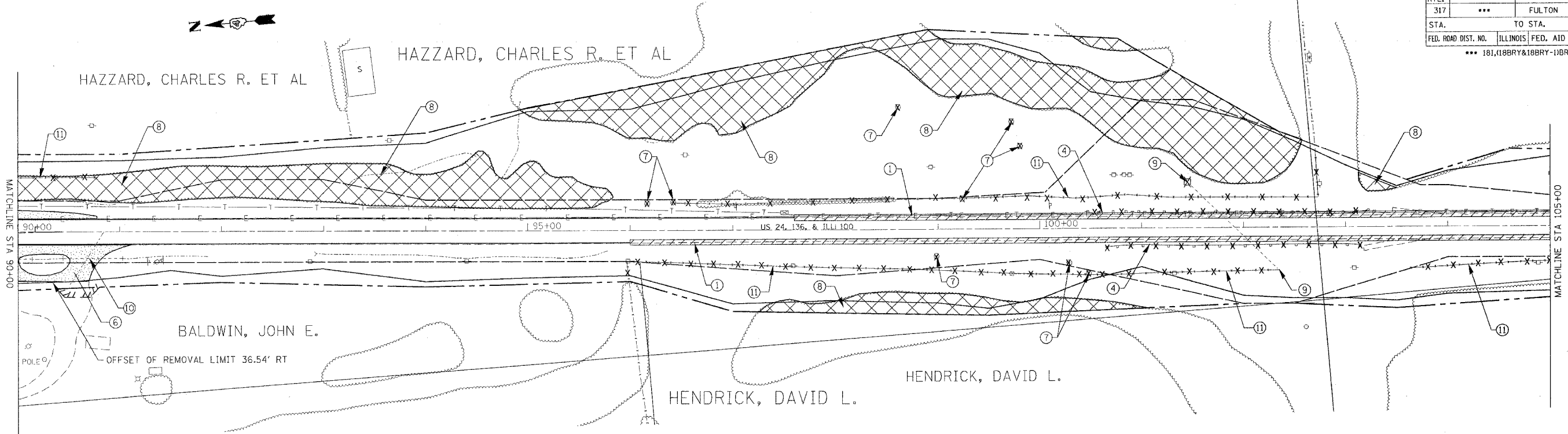


F.A.P. RTE.	SECTION	COUNTY	TOTAL SHEETS	SHEET NO.
317	...	FULTON	684	54
STA.		TO STA.		
FED. ROAD DIST. NO.		ILLINOIS FED. AID PROJECT		
... 181,188BRY&188BRY-188B,188-1				



REMOVAL LEGEND

① PAVEMENT REMOVAL		⑨ CONCRETE HEADWALL REMOVAL	
② STRUCTURE REMOVAL		⑩ REMOVE EXISTING CULVERTS	
③ BITUMINOUS SURFACE REMOVAL - BUTT JOINT		⑪ FENCE REMOVAL	
④ GUARDRAIL REMOVAL		⑫ DRIVEWAY PAVEMENT REMOVAL	
⑤ BUILDING REMOVAL		⑬ REMOVE EXISTING INLET	
⑥ REMOVAL INCLUDED IN EARTH EXCAVATION		⑭ CURB AND GUTTER REMOVAL	
⑦ TREE REMOVAL (UNIT)		⑮ ISLAND REMOVAL	
⑧ TREE REMOVAL (ACRES)		⑯ UNDERGROUND STORAGE TANK REMOVAL	

REVISIONS

NO.	NAME	DATE

ILLINOIS DEPARTMENT OF TRANSPORTATION

**REMOVAL ITEMS
STA 76+43 TO STA 105+00**

SCALE: VERT. _____
HORIZ. _____

DATE _____ DRAWN BY _____
CHECKED BY _____

PLOT DATE = 4/7/2005
 FILE NAME = c:\projects\un24\p00n\ph_2\sheet54_removal.dgn
 PLOT SCALE = 50.0000' / 1" IN.
 USER NAME = hsgreund