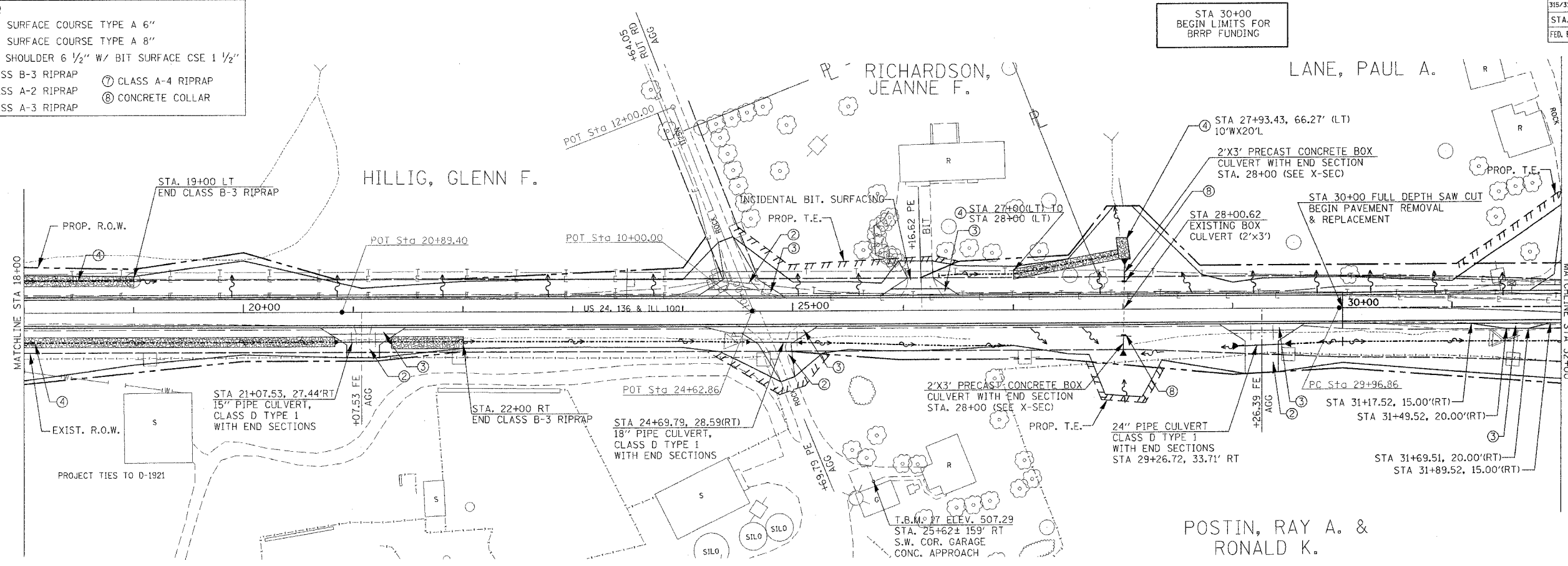


F.A.P. RTE.	SECTION	COUNTY	TOTAL SHEETS	SHEET NO.
315/317	***	FULTON	684	59
STA. 18+00		TO STA. 32+00		
FED. ROAD DIST. NO.		US 24		FED. AID PROJECT
*** 181,18BRY&18BRY-1)BR,18B-1 CONTRACT# 88753				

- LEGEND**
- ① AGG SURFACE COURSE TYPE A 6"
  - ② AGG SURFACE COURSE TYPE A 8"
  - ③ BIT SHOULDER 6 1/2" W/ BIT SURFACE CSE 1 1/2"
  - ④ CLASS B-3 RIPRAP
  - ⑤ CLASS A-2 RIPRAP
  - ⑥ CLASS A-3 RIPRAP
  - ⑦ CLASS A-4 RIPRAP
  - ⑧ CONCRETE COLLAR

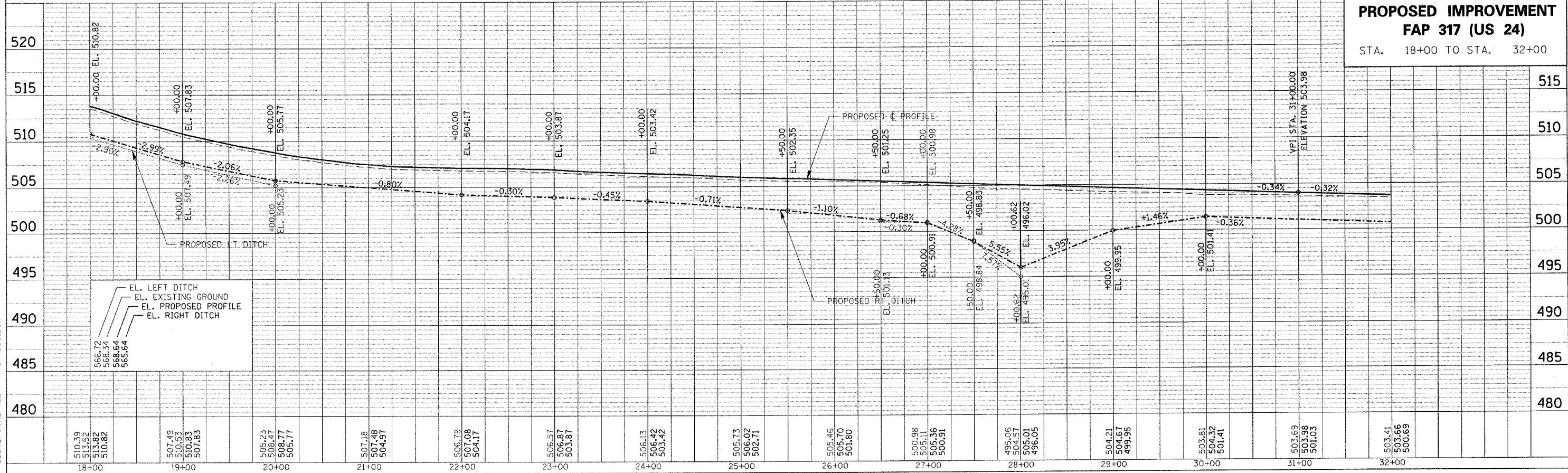


EXIST. CURVE US24EXCL5  
 PI STA. = 34+18.62  
 $\Delta$  = 12° 25' 53" (RT)  
 D = 1° 28' 47"  
 T = 421.75'  
 L = 840.20'  
 E = 22.90'  
 e = -----  
 T.R. = -----  
 S.E. RUN = -----  
 P.C. STA. = 29+96.86  
 P.T. STA. = 38+37.06



DATE	
BY	
REVISIONS	
NO.	
DESCRIPTION	
DATE	
BY	
DATE	
BY	

DATE	
BY	
REVISIONS	
NO.	
DESCRIPTION	
DATE	
BY	
DATE	
BY	



**PROPOSED IMPROVEMENT**  
**FAP 317 (US 24)**  
 STA. 18+00 TO STA. 32+00

US24SPOON.PH.2 / PPSHTSSO.DGN

PLOTTED: \*\*DATE\*\*