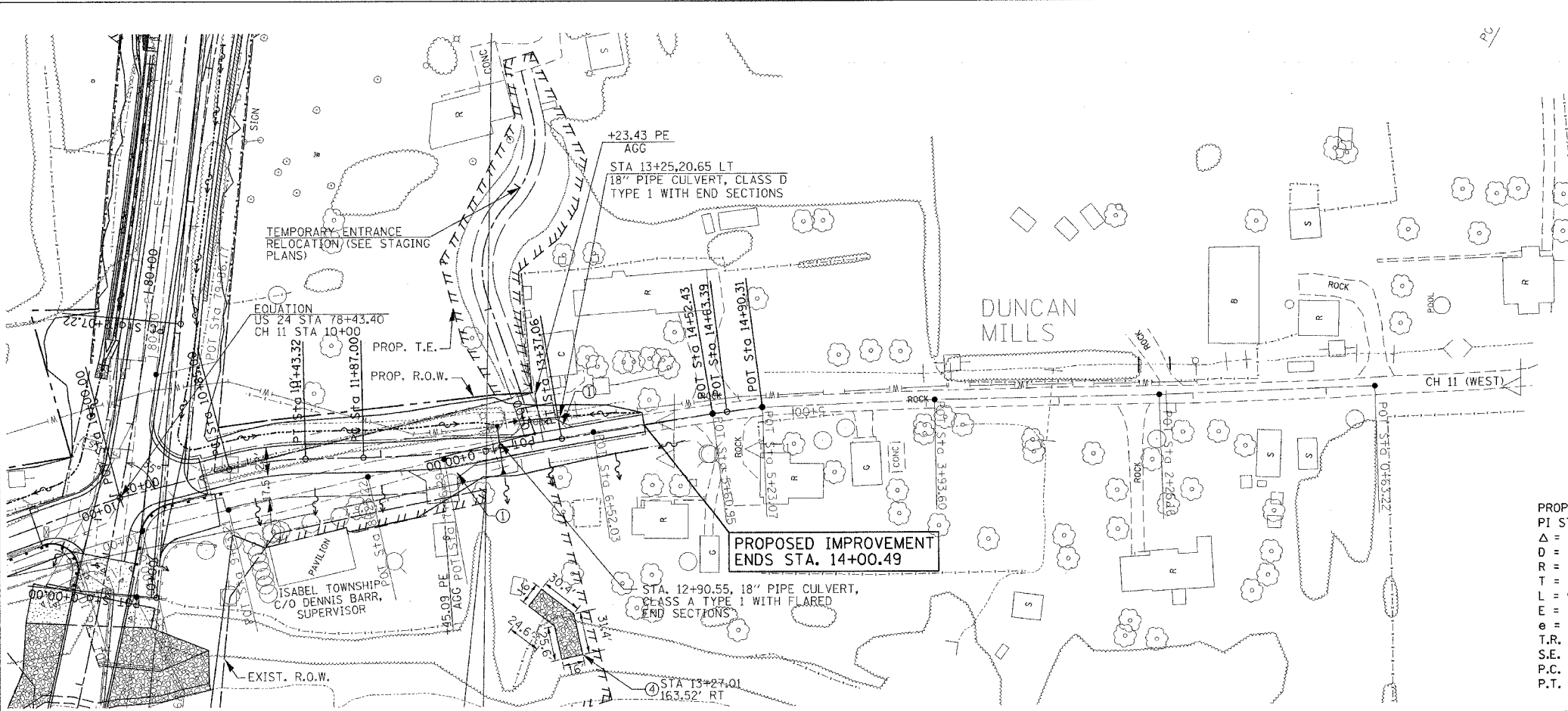


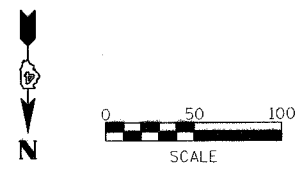
F.A.P. RTE.	SECTION	COUNTY	TOTAL SHEETS	SHEET NO.
315/317	***	FULTON	684	68
STA. 10+00 TO 14+90				
FED. ROAD DIST. NO.	ILLINOIS	FED. AID PROJECT		
*** 181.(18BRY&18BRY-1)BR,18B-1				
CONTRACT# 88753				

DATE	BY

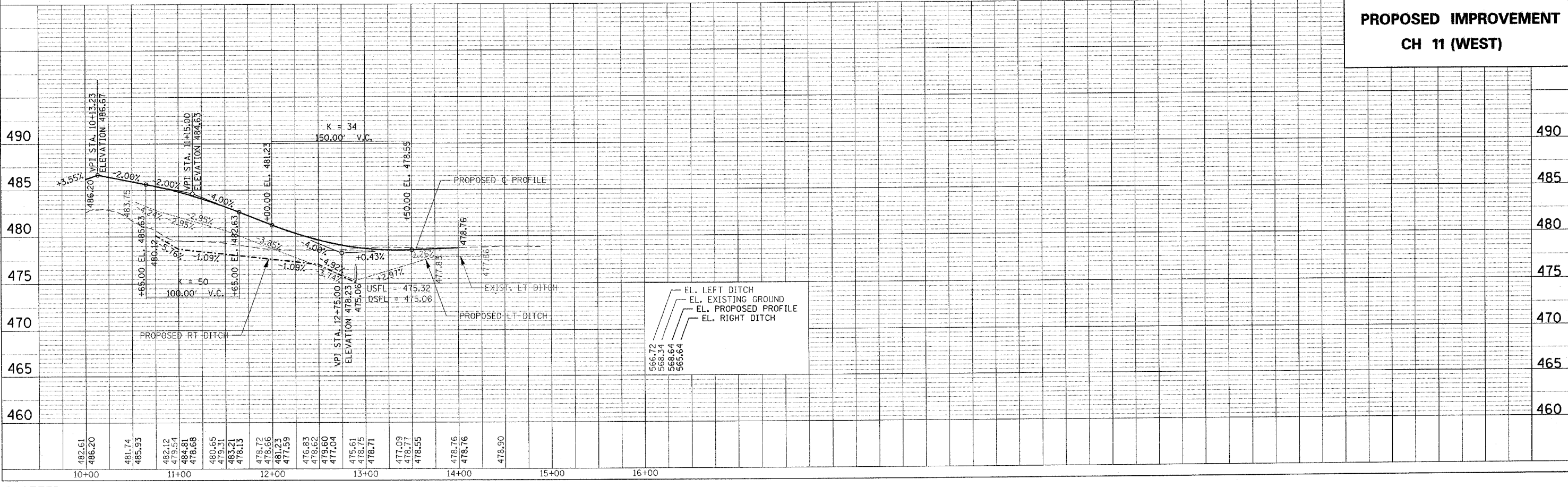


- LEGEND**
- ① AGG SURFACE COURSE TYPE A 6"
  - ② AGG SURFACE COURSE TYPE A 8"
  - ③ BIT SHOULDER 6 1/2" W/ BIT SURFACE CSE 1 1/2"
  - ④ CLASS B-3 RIPRAP
  - ⑤ CLASS A-2 RIPRAP
  - ⑥ CLASS A-3 RIPRAP
  - ⑦ CLASS A-4 RIPRAP
  - ⑧ CONCRETE COLLAR

PROP. CURVE DM250J	PROP. CURVE DM1000J
PI STA. = 11+14.30	PI STA. = 12+62.17
Δ = 13° 22' 01" (RT)	Δ = 8° 35' 52" (LT)
D = 22° 55' 06"	D = 5° 43' 46"
R = 250.00'	R = 1,000.00'
T = 29.30'	T = 75.17'
L = 58.32'	L = 150.06'
E = 1.71'	E = 2.82'
e = -----	e = -----
T.R. = -----	T.R. = -----
S.E. RUN = -----	S.E. RUN = -----
P.C. STA. = 10+85.00	P.C. STA. = 11+87.00
P.T. STA. = 11+43.32	P.T. STA. = 13+37.06



DATE	BY



PLOTTED: \$\$\$DATE\$\$\$