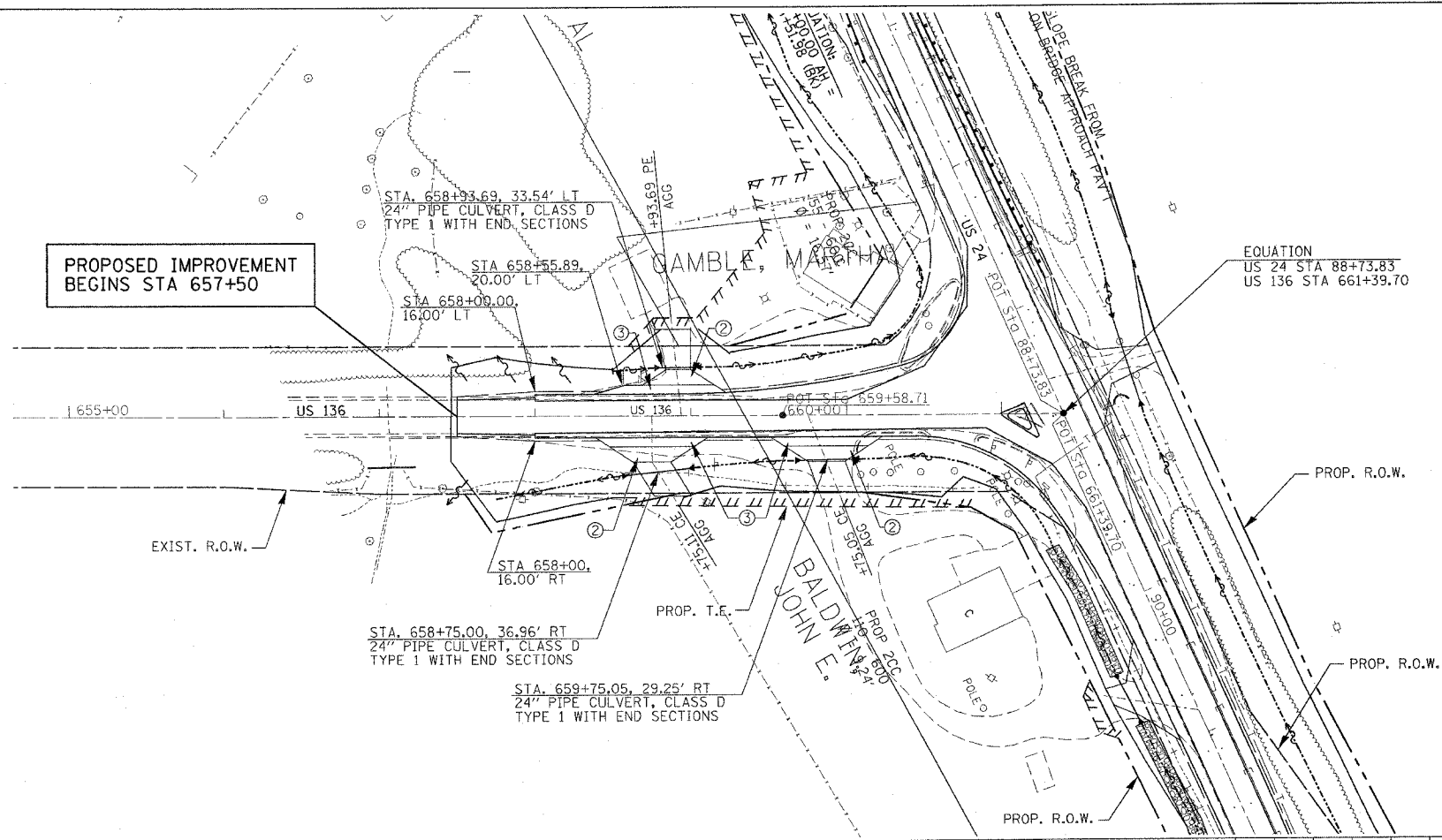


F.A.P. RTE.	SECTION	COUNTY	TOTAL SHEETS	SHEET NO.
115/317	***	FULTON	684	69
STA.		TO STA.		
FED. ROAD DIST. NO.	US 24	FED. AID PROJECT		
*** 181, (18BRY&18BRY-1)BR, 186-1 CONTRACT# 88753				

PLAN	SURVEYED	BY	DATE
NOTE BOOK NO.	ALIGNED		
	CHECKED		
	DATE		

PROFILE	SURVEYED	BY	DATE
NOTE BOOK NO.	GRADES		
	CHECKED		
	DATE		

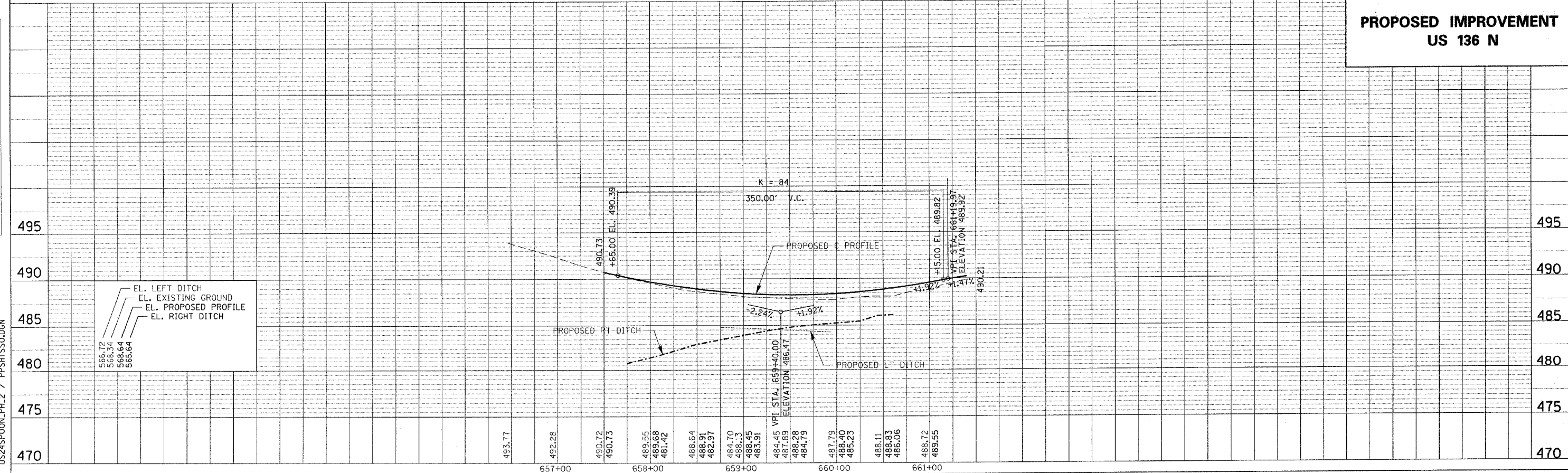
US24SPOON_PH_2 / PPSHTSSO.DGN



SEE INTERSECTION DETAIL SHEET FOR US 24 / US 136
 FOR PAVEMENT WIDENING, SEE BASE COURSE WIDENING DETAIL SHEET
 FOR ISLAND DETAIL, SEE INTERSECTION DETAIL SHEET FOR US 24 / US 136

- LEGEND**
- ① AGG SURFACE COURSE TYPE A 6"
 - ② AGG SURFACE COURSE TYPE A 8"
 - ③ BIT SHOULDER 6 1/2" W/ BIT SURFACE CSE 1 1/2"
 - ④ CLASS B-3 RIPRAP
 - ⑤ CLASS A-2 RIPRAP
 - ⑥ CLASS A-3 RIPRAP
 - ⑦ CLASS A-4 RIPRAP
 - ⑧ CONCRETE COLLAR

**PROPOSED IMPROVEMENT
US 136 N**



EL. LEFT DITCH
 EL. EXISTING GROUND
 EL. PROPOSED PROFILE
 EL. RIGHT DITCH

PLOTTED: \$\$\$DATE\$\$\$