

F.A. RTE.	SECTION	COUNTY	TOTAL SHEETS	SHEET NO.
315/317	***	FULTON	684	127
STA.		TO STA.		
FED. ROAD DIST. NO.		ILLINOIS FED. AID PROJECT		

*** 181,(18BRY&18BRY-1)BR,18B-1

TOWNSHIP 4 NORTH, RANGE 3 EAST

TOWNSHIP 4 NORTH, RANGE 3 EAST

WEST LINE OF THE SOUTHWEST QUARTER

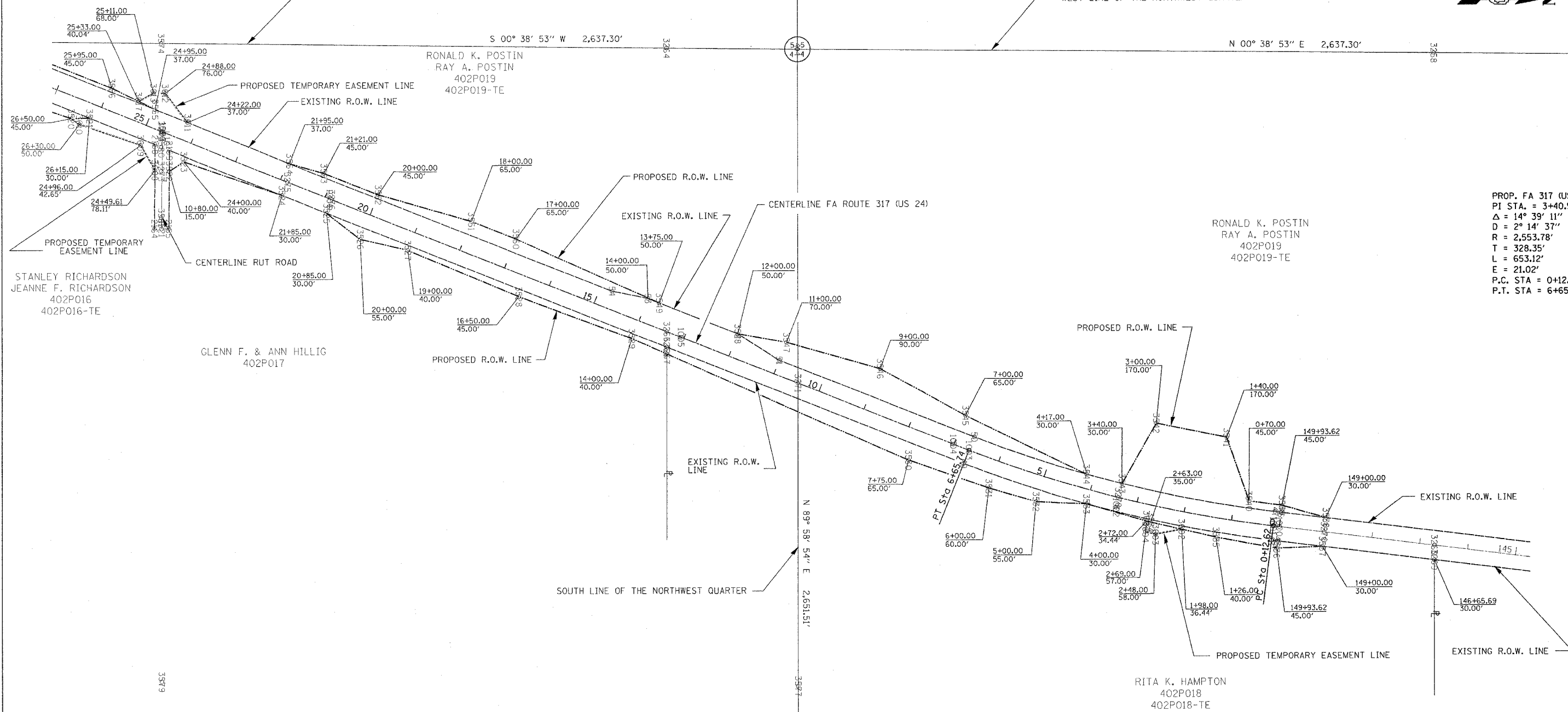
WEST LINE OF THE NORTHWEST QUARTER

S 00° 38' 53" W 2,637.30'

N 00° 38' 53" E 2,637.30'

RONALD K. POSTIN
RAY A. POSTIN
402P019
402P019-TE

RONALD K. POSTIN
RAY A. POSTIN
402P019
402P019-TE



PROP. FA 317 (US 24)
PI STA. = 3+40.97
Δ = 14° 39' 11" (RT)
D = 2° 14' 37"
R = 2,553.78'
T = 328.35'
L = 653.12'
E = 21.02'
P.C. STA = 0+12.62
P.T. STA = 6+65.74

APPROVED BY _____
DISTRICT ENGINEER

DATE _____

DRAWN BY _____
WRITTEN BY _____
CHECKED BY _____
INSPECTED BY _____

- LEGEND:**
- PROPOSED R.O.W. LINE
 - - - PROPOSED T.E. LINE
 - EXISTING R.O.W. LINE

PLATFILE: 143
FOR OLD R.O.W.
PLAN FILE: 10
SHEET(S): 19, 20

RIGHT OF WAY PLANS	
FA ROUTE 317 (US 24)	
PROJECT	SECTION *
STATION	149+00.00 TO
STATION	27+00.00
COUNTY	FULTON
SCALE	1"=100' SHEET 1 OF 7