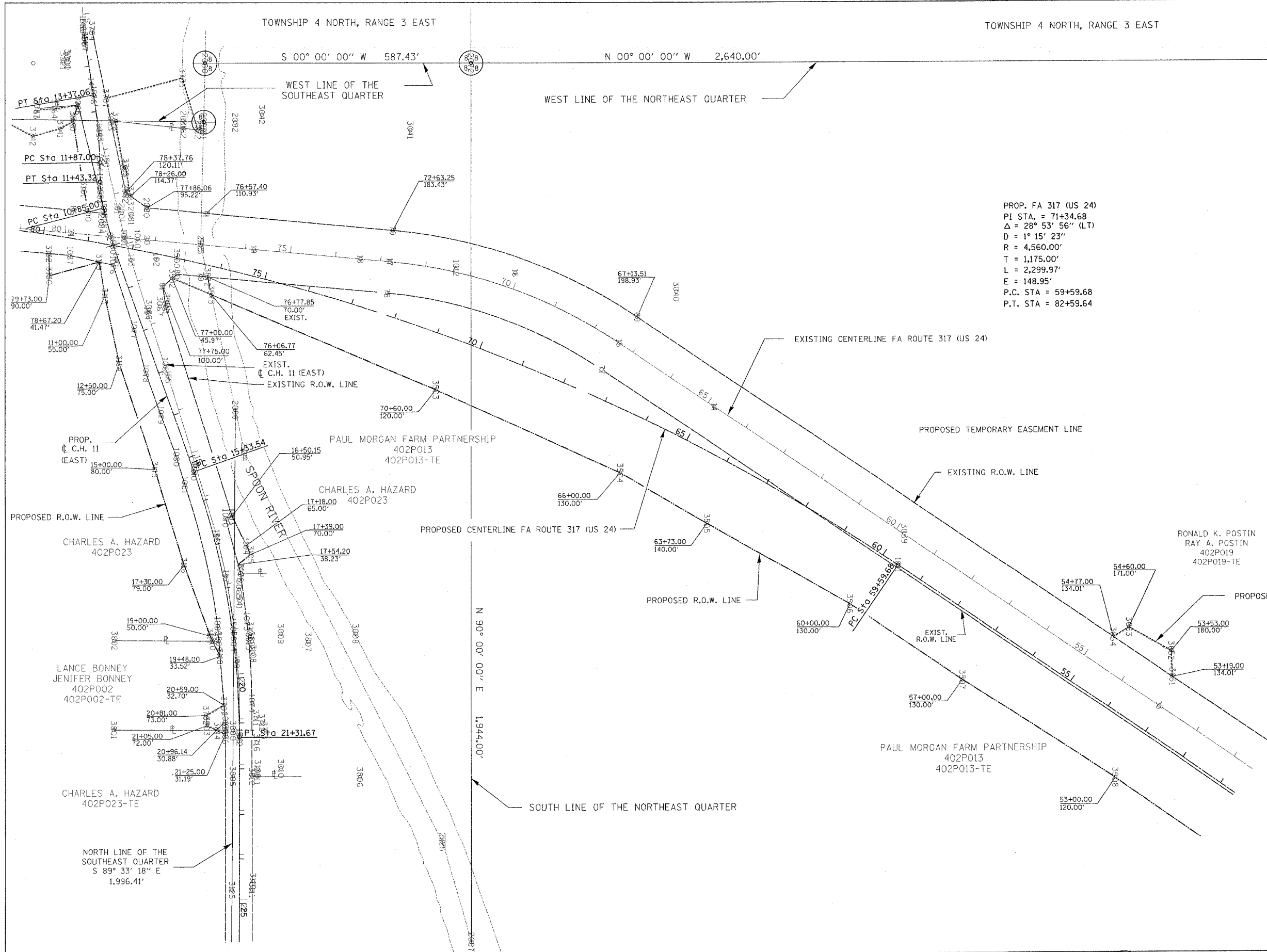


F.A. RTE.	SECTION	COUNTY	TOTAL SHEETS	SHEET NO.
317/317	***	FULTON	684	129
STA.		TO STA.		
FED. ROAD DIST. NO.		ILLINOIS FED. AID PROJECT		
*** 181,18BRY&18BRY-1)BR,18B-1				



PROP. FA 317 (US 24)
 PI STA. = 71+34.68
 $\Delta = 28^\circ 53' 56''$ (LT)
 $D = 1^\circ 15' 23''$
 $R = 4,560.00'$
 $T = 1,175.00'$
 $L = 2,299.97'$
 $E = 148.95'$
 P.C. STA = 59+59.68
 P.T. STA = 82+59.64



LEGEND:

- PROPOSED R.O.W. LINE
- PROPOSED T.E. LINE
- EXISTING R.O.W. LINE

PLATFILE: 143

FOR OLD R.O.W.
 PLAN FILE: 10
 SHEET(S): 19, 20

RIGHT OF WAY PLANS
 FA ROUTE 317 (US 24)

PROJECT _____ SECTION _____
 STATION 55+00.00 _____ TO _____
 STATION 80+00.00 _____
 COUNTY FULTON
 SCALE 1"=100' SHEET 3 OF 7

APPROVED BY _____
 DISTRICT ENGINEER
 DATE _____

DRAWN BY _____
 WRITTEN BY _____
 CHECKED BY _____
 INSPECTED BY _____