

| F.A. RTE. | SECTION | COUNTY | TOTAL SHEETS | SHEET NO. |
|-----------|---------|--------|--------------|-----------|
| 315/317 | *** | FULTON | 684 | 130 |

| | |
|---------------------|---------------------------|
| STA. | TO STA. |
| FED. ROAD DIST. NO. | ILLINOIS FED. AID PROJECT |

*** 181,18BRY&18BRY-1)BR,18B-1

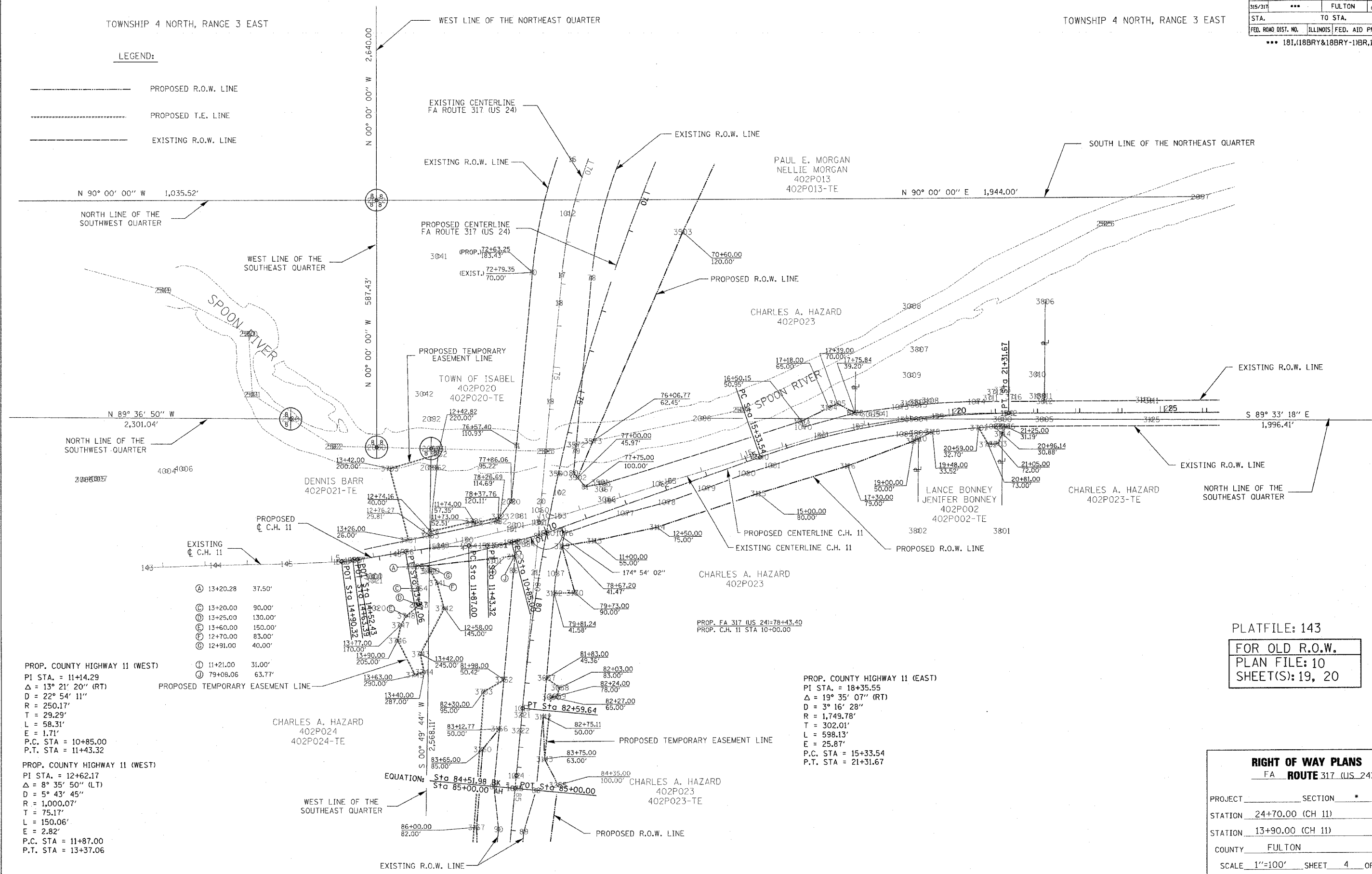
TOWNSHIP 4 NORTH, RANGE 3 EAST

TOWNSHIP 4 NORTH, RANGE 3 EAST

LEGEND:

- PROPOSED R.O.W. LINE
- PROPOSED T.E. LINE
- EXISTING R.O.W. LINE

APPROVED BY _____ DISTRICT ENGINEER
DATE _____



| | | |
|---|----------|---------|
| Ⓐ | 13+20.28 | 37.50' |
| Ⓑ | 13+20.00 | 90.00' |
| Ⓒ | 13+25.00 | 130.00' |
| Ⓓ | 13+60.00 | 150.00' |
| Ⓔ | 12+70.00 | 83.00' |
| Ⓚ | 12+91.00 | 40.00' |

PROP. COUNTY HIGHWAY 11 (WEST)
 PI STA. = 11+14.29
 Δ = 13° 21' 20" (RT)
 D = 22° 54' 11"
 R = 250.17'
 T = 29.29'
 L = 58.31'
 E = 1.71'
 P.C. STA = 10+85.00
 P.T. STA = 11+43.32

PROP. COUNTY HIGHWAY 11 (EAST)
 PI STA. = 12+62.17
 Δ = 8° 35' 50" (LT)
 D = 5° 43' 45"
 R = 1,000.07'
 T = 75.17'
 L = 150.06'
 E = 2.82'
 P.C. STA = 11+87.00
 P.T. STA = 13+37.06

PROP. COUNTY HIGHWAY 11 (EAST)
 PI STA. = 18+35.55
 Δ = 19° 35' 07" (RT)
 D = 3° 16' 28"
 R = 1,749.78'
 T = 302.01'
 L = 598.13'
 E = 25.87'
 P.C. STA = 15+33.54
 P.T. STA = 21+31.67

PLATFILE: 143
 FOR OLD R.O.W.
 PLAN FILE: 10
 SHEET(S): 19, 20

| RIGHT OF WAY PLANS | |
|----------------------|----------------------|
| FA ROUTE 317 (US 24) | |
| PROJECT | SECTION * |
| STATION | 24+70.00 (CH 11) TO |
| STATION | 13+90.00 (CH 11) |
| COUNTY | FULTON |
| SCALE | 1"=100' SHEET 4 OF 7 |