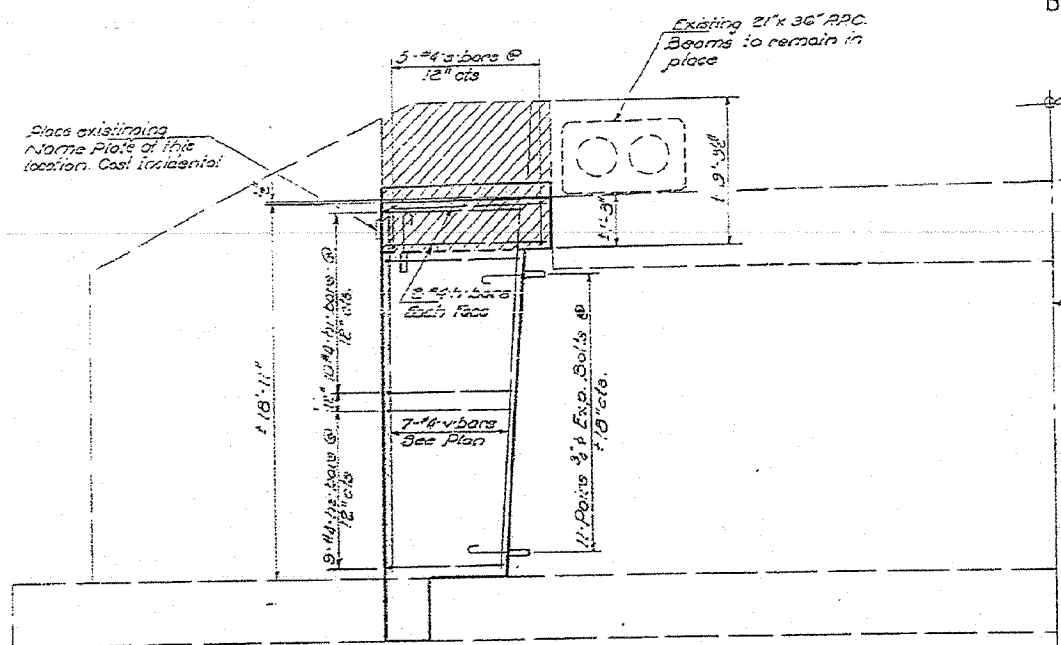
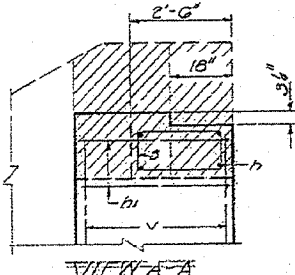


F.A. RTE.	SECTION	COUNTY	TOTAL SHEETS	SHEET NO.
315	***	FULTON	694	140
STA.	TO STA.			
FED. ROAD DIST. NO.	ILLINOIS FED. AID PROJECT		*** 18L188RY&188RY-1NR.188-1	

STATE OF ILLINOIS
DEPARTMENT OF PUBLIC WORKS & BUILDINGS
DIVISION OF HIGHWAYS

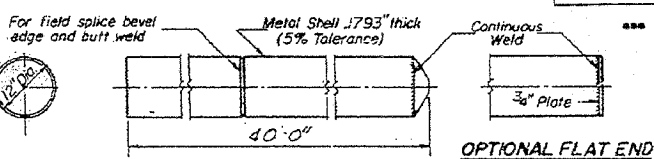


ELEVATION

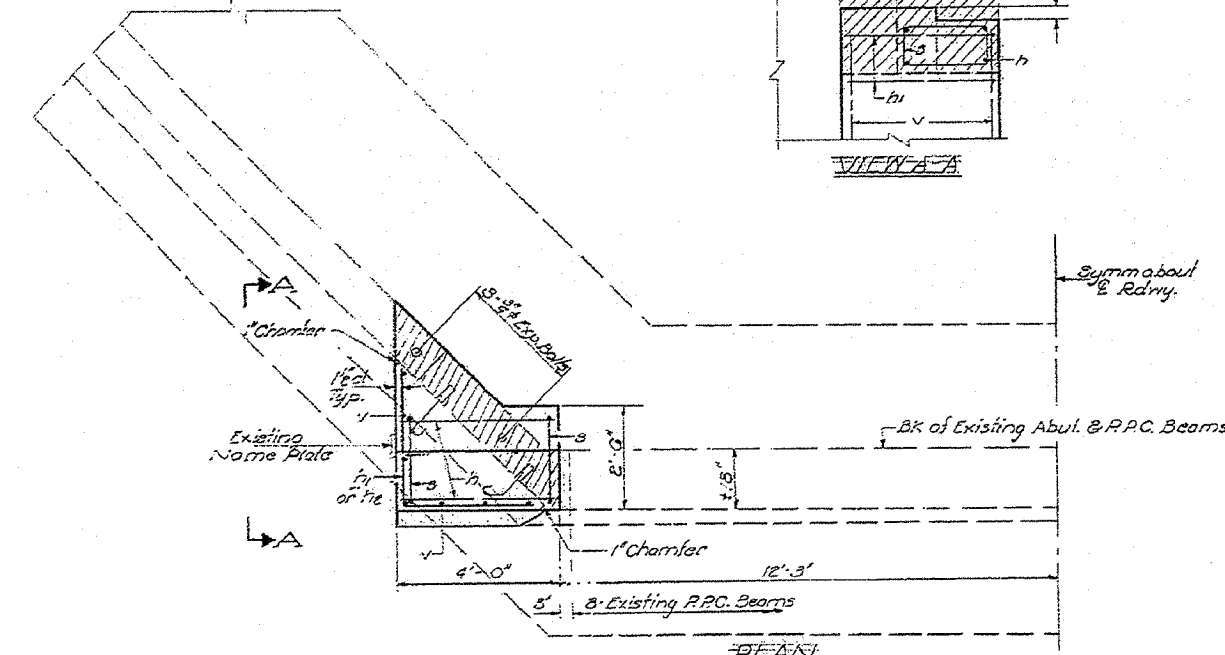


SECTION A-A

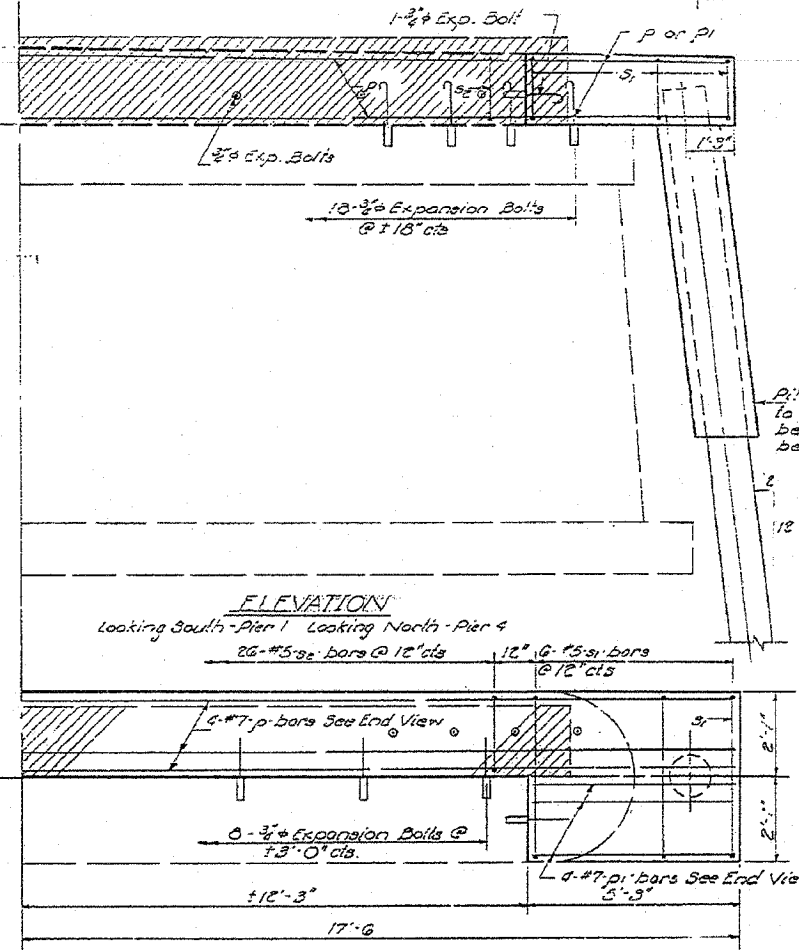
Welded wire fabric 6" x 6" mesh
#4 wire - Wt. 53#/100 sq. ft.
The cost of Class X Concrete Encasement and Reinforcement is incidental to the cost of furnishing piles.
Forms for encasement may be omitted when soil conditions will permit.
Note: Driving and bearing ends of pile shall be cut square.



OPTIONAL FLAT END

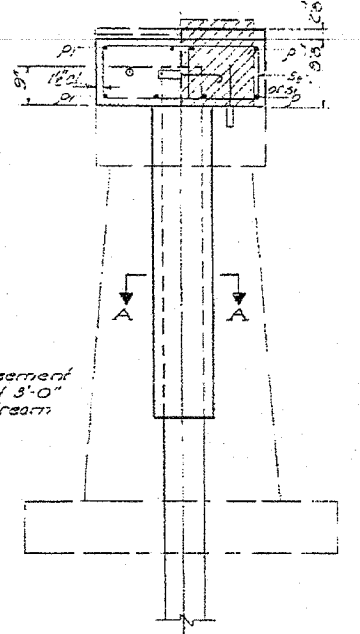


PLAN



ELEVATION

Looking South - Pier 1 Looking North - Pier 4



END VIEW

PILE DATA

Type: Metal Shell Piles 12" dia
Capacity: 30 Tons
Est Length: 40 Ft.
No Required: 2

TWO ABUTMENTS
BILL OF MATERIAL

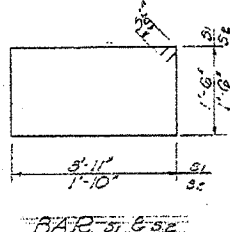
Bar	No	Size	Length	Shape
h	16	#4	3'-9"	
h1	40	#4	6'-2"	L
h2	36	#4	5'-4"	L
s	20	#4	7'-3"	□
v	28	#4	10'-8"	

Class X Concrete Cu Yds 17.8
Reinforcement Bars Lbs 780
Expansion bolts 1/2" dia Each 100
Concrete Removal Cu Yds 3

TWO PIERS
BILL OF MATERIAL

Bar	No	Size	Length	Shape
p	8	#7	34'-6"	
o1	16	#7	5'-0"	
s1	24	#5	11'-9"	□
se	52	#5	7'-7"	□

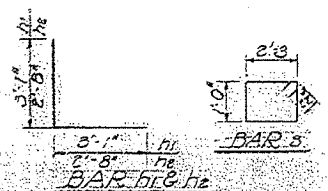
Class X Concrete Cu Yds 12.5
Reinforcement Bars Lbs 1440
Expansion Bolts 1/2" dia 56
Concrete Removal Cu Yds 7
Metal Shell Piles 12" dia Lin Ft 160



BAR SCHEDULE

NOTES:
Matched area indicates concrete removal. Reinforcement extending into removed area shall be cleaned and incorporated into the new construction.
Expansion bolts shall be anchored in sound concrete.
All edges shall have standard 1" chamfers except as noted.

DESIGNED	John S. Schineller	DATE	5/26/60
CHECKED	James P. Ponce	EXAMINED	[Signature]
DRAWN	J. SCHINELLER	PASSED	[Signature]
CHECKED	JD	APPROVED	[Signature]



BAR SCHEDULE

ABUTMENT NO. 6 PIERS 1 & 4
S.E. PI. 3 SEC. 18 BRY
FULTON COUNTY
STA. 6-4-75

REVISIONS		ILLINOIS DEPARTMENT OF TRANSPORTATION
NAME	DATE	
		EXISTING OVERFLOW STRUCTURE FOR INFORMATION ONLY

SCALE: VERT. DATE
HORIZ. DATE

DRAWN BY
CHECKED BY