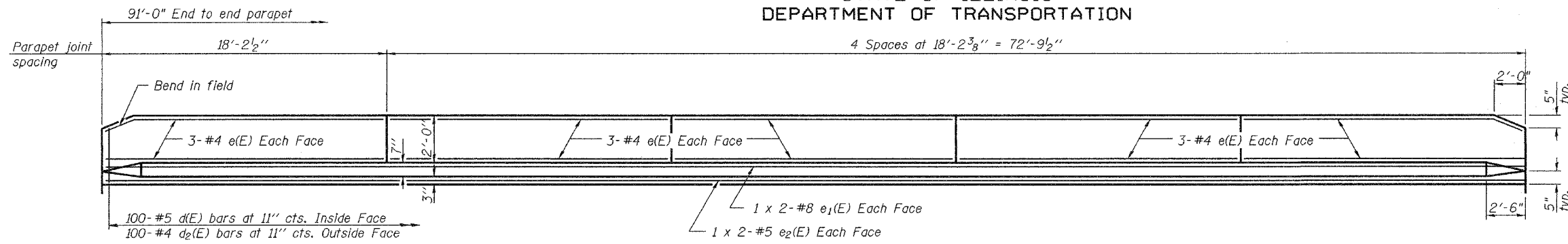


STATE OF ILLINOIS
DEPARTMENT OF TRANSPORTATION

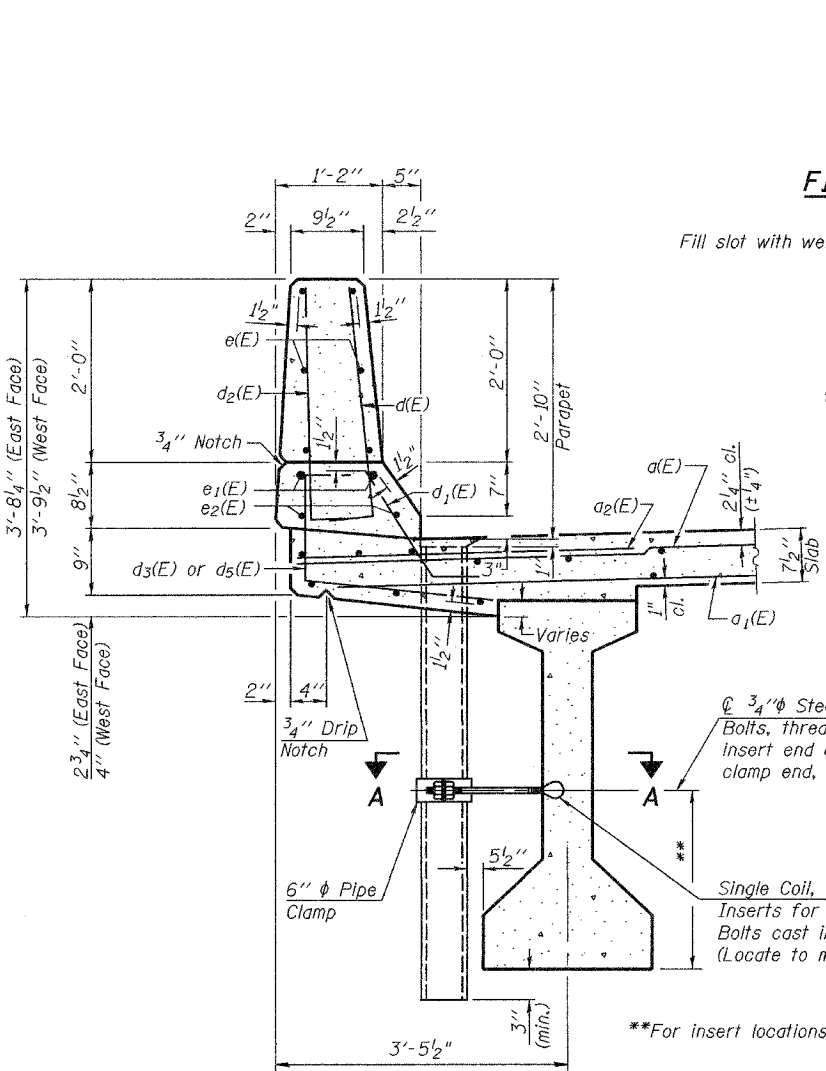
ROUTE NO. F.A.P. 315	SECTION 18BRY- 1BR	COUNTY FULTON	TOTAL SHEETS 151	SHEET NO. 6
FED. ROAD DIST. NO. 7			ILLINOIS	FED. AID PROJECT

13 SHEETS

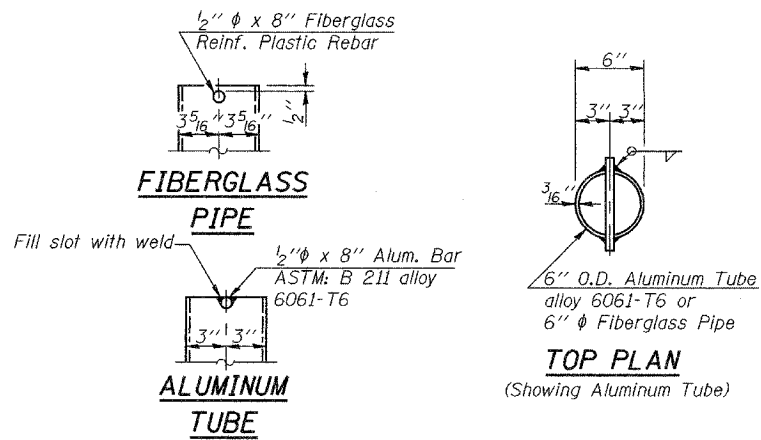
Contract #88753



INSIDE ELEVATION OF PARAPET



SECTION THRU PARAPET

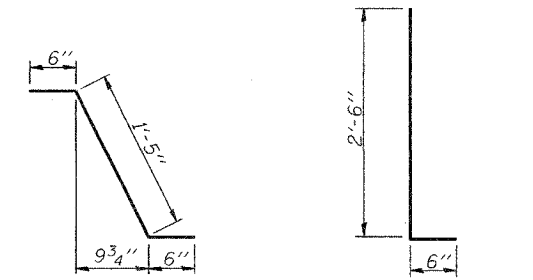


MINIMUM BAR LAP

- #4 bar - 1'-4"
- #5 bar - 1'-8"
- #8 bar - 3'-5"

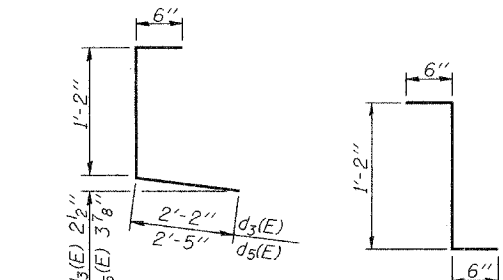
Notes:

Fiberglass pipe shall conform to ASTM D2996, with short-time rupture strength hoop tensile stress of 30,000 p.s.i. minimum. The exterior surfaces of the floor drains shall be coated or pigmented by the manufacturer with a color that matches the concrete. The clamping device and inserts shall be galvanized according to AASHTO M 232.



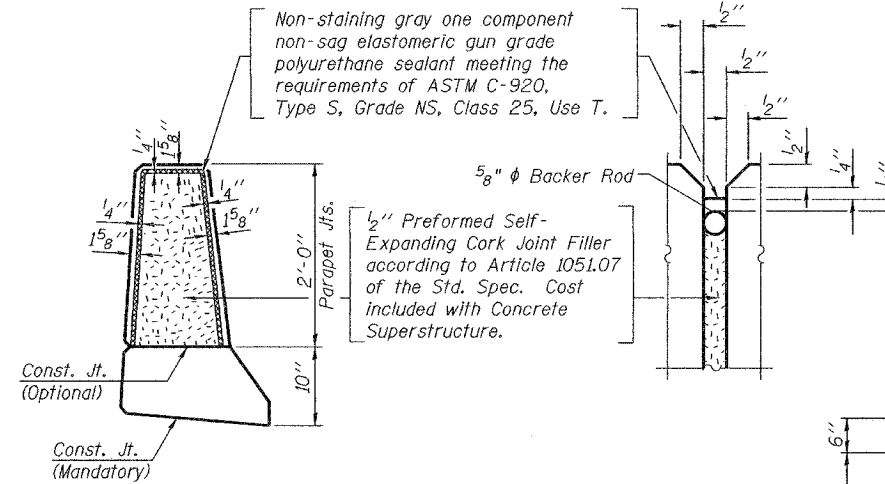
BAR d1(E)

BARS d(E) & d2(E)

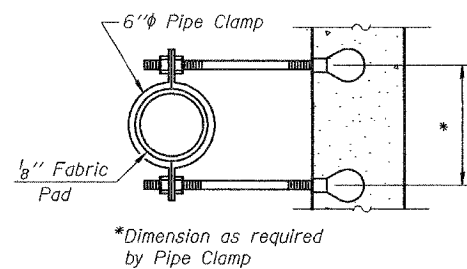


BARS d3(E) & d5(E)

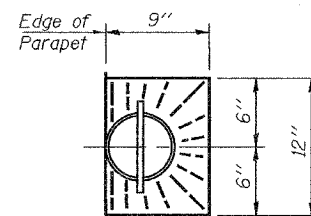
BAR d4(E)



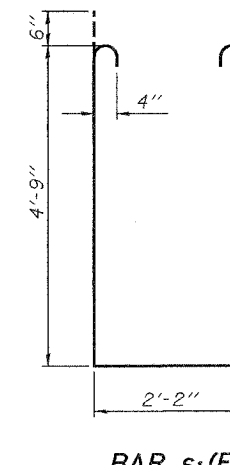
PARAPET JOINT DETAILS



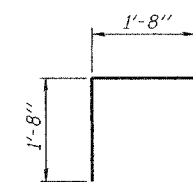
SECTION A-A



TOP PLAN



BAR s1(E)



BAR v(E)

SUPERSTRUCTURE
BILL OF MATERIAL

Bar	No.	Size	Length	Shape
a(E)	157	#5	42'-6"	—
a1(E)	110	#5	40'-8"	—
a2(E)	158	#6	4'-6"	—
a3(E)	4	#5	41'-6"	—
b(E)	138	#5	31'-8"	—
b1(E)	144	#5	24'-3"	—
d(E)	200	#5	3'-0"	—
d1(E)	188	#5	2'-5"	┌
d2(E)	200	#4	3'-0"	┌
d3(E)	100	#4	3'-10"	┌
d4(E)	12	#5	2'-2"	┌
d5(E)	100	#4	4'-1"	┌
e(E)	60	#4	17'-10"	—
e1(E)	8	#8	47'-1"	—
e2(E)	8	#5	46'-3"	—
m(E)	4	#6	42'-0"	—
m1(E)	6	#6	43'-6"	—
m2(E)	24	#6	10'-0"	—
m3(E)	10	#6	5'-2"	—
m4(E)	4	#6	2'-2"	—
s(E)	82	#5	5'-10"	┌
s1(E)	72	#4	12'-8"	┌
v(E)	84	#5	3'-4"	┌
Reinforcement Bars, Epoxy Coated			Lbs.	27720
Concrete Superstructure			Cu. Yds.	151.6

Reinforcement bars designated (E) shall be epoxy coated.

SUPERSTRUCTURE DETAILS
F.A.P. ROUTE 315 - SECTION (18BRY-1)BR
FULTON COUNTY
STATION 64+99.00
STRUCTURE NO. 029-0067

DESIGNED	Alan M. Johnson
CHECKED	Philip E. Copperrnoll
DRAWN	Michael B. Mossman
CHECKED	AMJ PEC

EXAMINED	April 25, 2005	Thomas J. Demagallo
PASSED		Ralph E. Anderson

PI-1-D 9-1-03