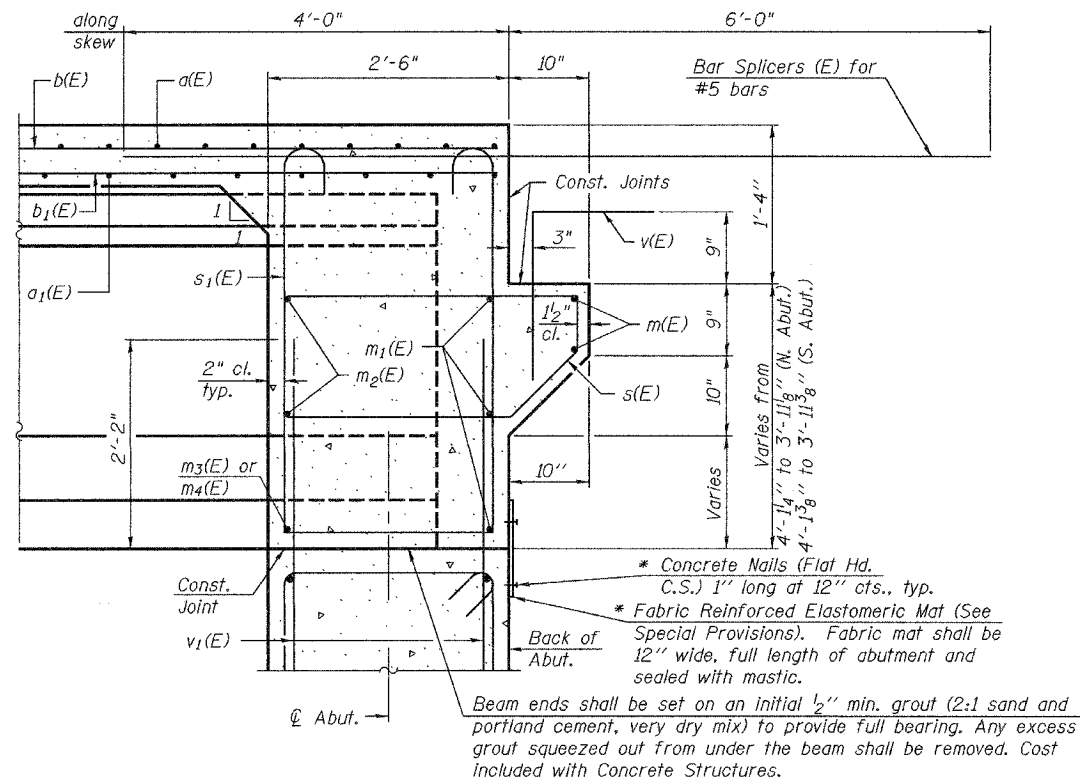


STATE OF ILLINOIS  
DEPARTMENT OF TRANSPORTATION

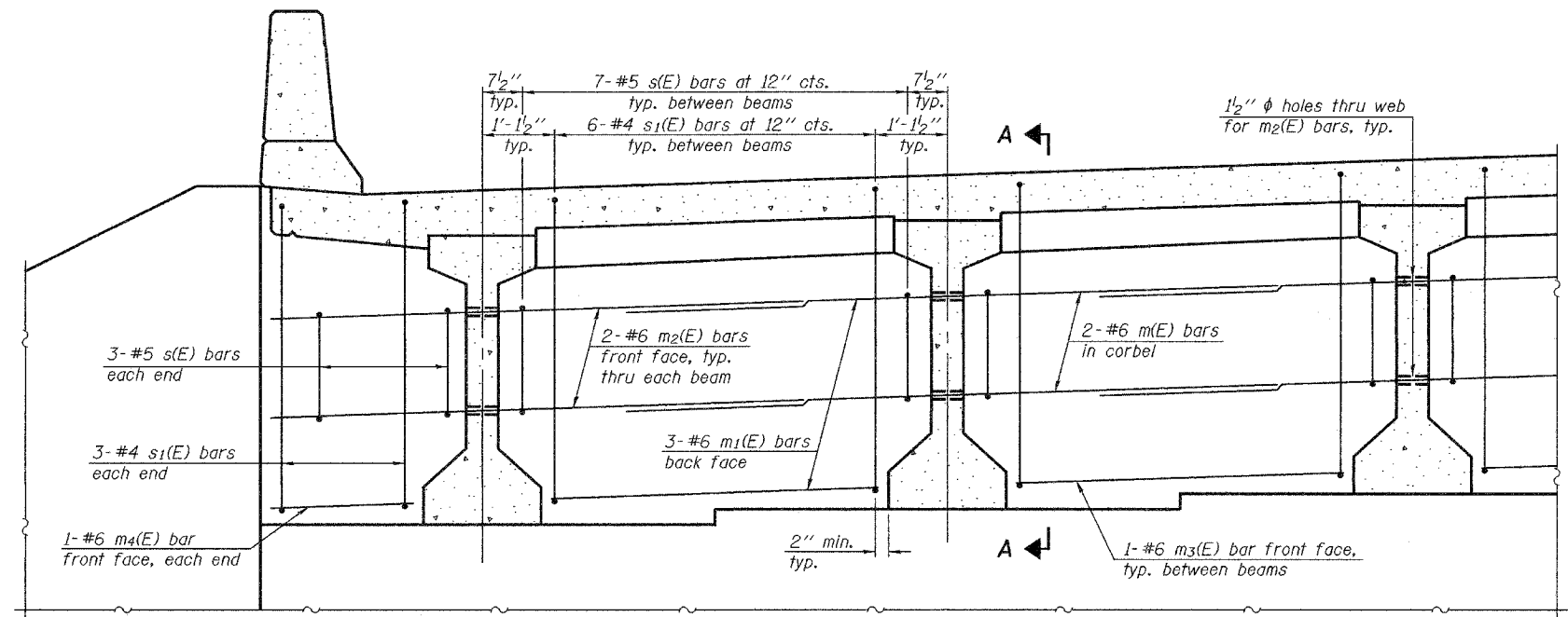
ROUTE NO.	SECTION	COUNTY	TOTAL SHEETS	SHEET NO.	SHEET NO.
F.A.P. 315	18BRY-11BR	FULTON		158	13 SHEETS
FED. ROAD DIST. NO. 7	ILLINOIS	FED. AID PROJECT-			

Contract #88753



**SECTION A-A**

\* Cost included with Concrete Structures.



**DIAPHRAGM ELEVATION AT ABUTMENT**

**MIN. BAR LAP**

#6 bar = 2'-7"

Notes:  
Reinforcement bars in diaphragm are billed with superstructure on sheet 6 of 13.  
Concrete in diaphragm is included with Concrete Superstructure on sheet 6 of 13.  
For details of bars s(E) & s1(E) see sheet 6 of 13.  
The s(E) and s1(E) bars shall be placed parallel to the beams. Spacing for these bars shall be at right angles to the beams.

DESIGNED	Alan M. Johnson
CHECKED	Philip E. Coppernoll
DRAWN	Michael B. Mossman
CHECKED	AMJ PEC

APPROVED	April 25, 2005
EXAMINED	Thomas J. Damagalki ENGINEER OF BRIDGE DESIGN
PASSED	Ralph E. Anderson ENGINEER OF BRIDGES AND STRUCTURES

**DIAPHRAGM DETAILS**  
**F.A.P. ROUTE 315 - SECTION (18BRY-11BR)**  
**FULTON COUNTY**  
**STATION 64+99.00**  
**STRUCTURE NO. 029-0067**