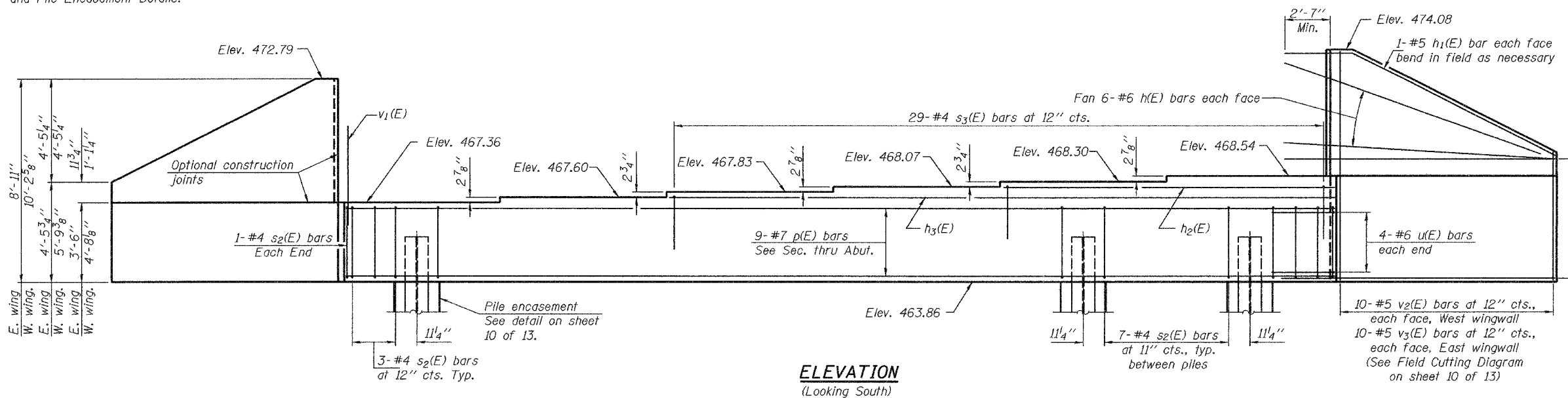


STATE OF ILLINOIS
DEPARTMENT OF TRANSPORTATION

ROUTE NO.	SECTION	COUNTY	SHEET NO.	SHEET
F.A.P. 315	(18BRY-1)BR	FULTON	162	13 SHEETS
FED. ROAD DIST. NO. 7	ILLINOIS	FED. AID PROJECT-		

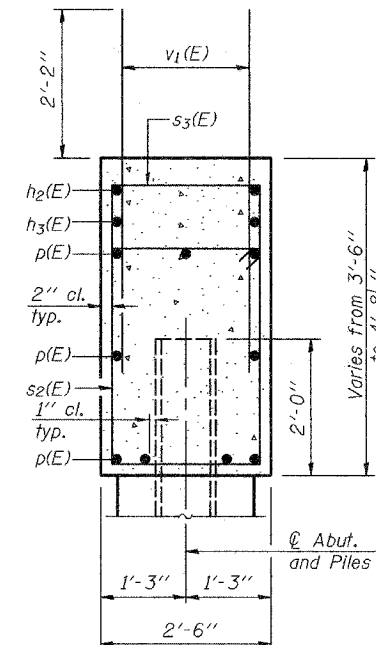
Contract #88753

Notes:
Pour steps monolithically with cap.
Reinforcement bars designated (E)
shall be epoxy coated.
See sheet 10 of 13 for Field Cutting
Diagram, s₂(E) bar, s₃(E) bar, u(E) bar
and Pile Encasement Details.

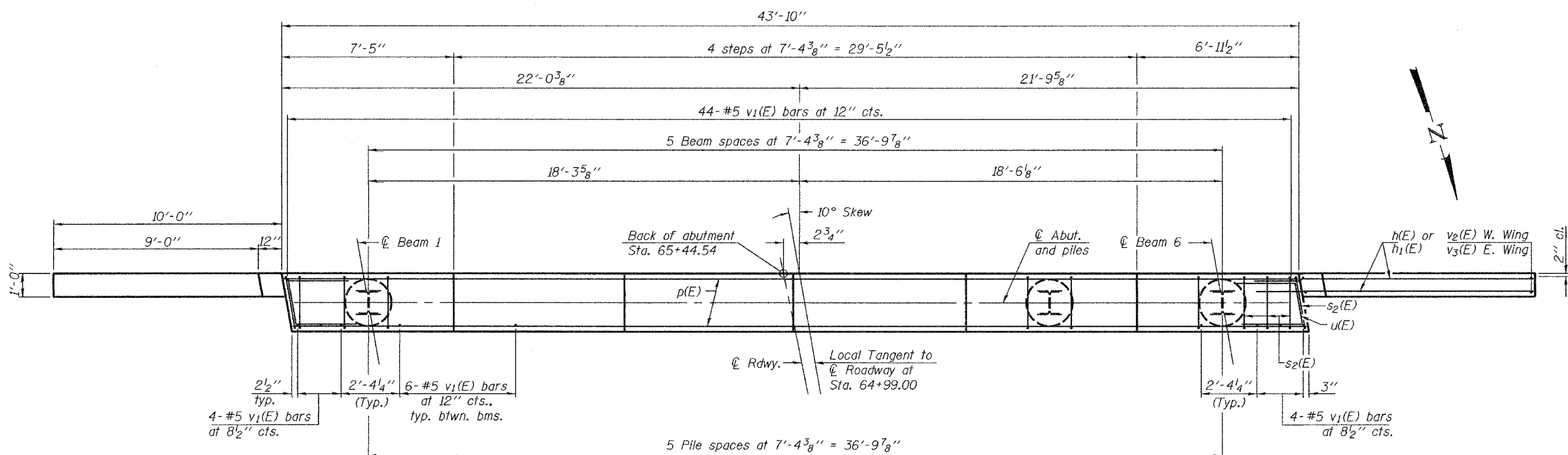


ELEVATION
(Looking South)

8-#6 h(E) bars at 8" cts.
each face West Wingwall
7-#6 h(E) bars at 8" cts.
each face East Wingwall



SEC. THRU ABUT.



PLAN

BILL OF MATERIAL

Bar	No.	Size	Length	Shape
h(E)	54	#6	13'-2"	—
h ₁ (E)	4	#5	13'-8"	—
h ₂ (E)	2	#4	14'-0"	—
h ₃ (E)	2	#4	28'-8"	—
p(E)	9	#7	43'-6"	—
s ₂ (E)	43	#4	11'-5"	□
s ₃ (E)	29	#4	6'-8"	□
u(E)	8	#6	7'-4"	∩
v ₁ (E)	82	#5	4'-4"	—
v ₂ (E)	10	#5	15'-3"	—
v ₃ (E)	10	#5	12'-8"	—
Concrete Structures		Cu. Yd.	22.2	
Reinforcement Bars, Epoxy Coated		Pound	3190	
Furnishing Steel Piles HP 12x74		Foot	450	
Driving Steel Piles		Foot	450	
Structure Excavation		Cu. Yd.	44.5	

PILE DATA

Type: HP 12x74
Capacity: Driven to refusal*
Est. Length: 75 ft.
No. Required: 6
* The pile capacity has been reduced to account for 16 ton negative skin friction.

DESIGNED	Alan M. Johnson
CHECKED	Philip E. Copperrill
DRAWN	Michael B. Mossman
CHECKED	AMJ PEC

April 25, 2005
EXAMINED *Thomas J. Domagalicki*
PASSED *Ralph E. Anderson*
ENGINEER OF BRIDGES AND STRUCTURES

SOUTH ABUTMENT
F.A.P. ROUTE 315 - SECTION (18BRY-1)BR
FULTON COUNTY
STATION 64+99.00
STRUCTURE NO. 029-0067