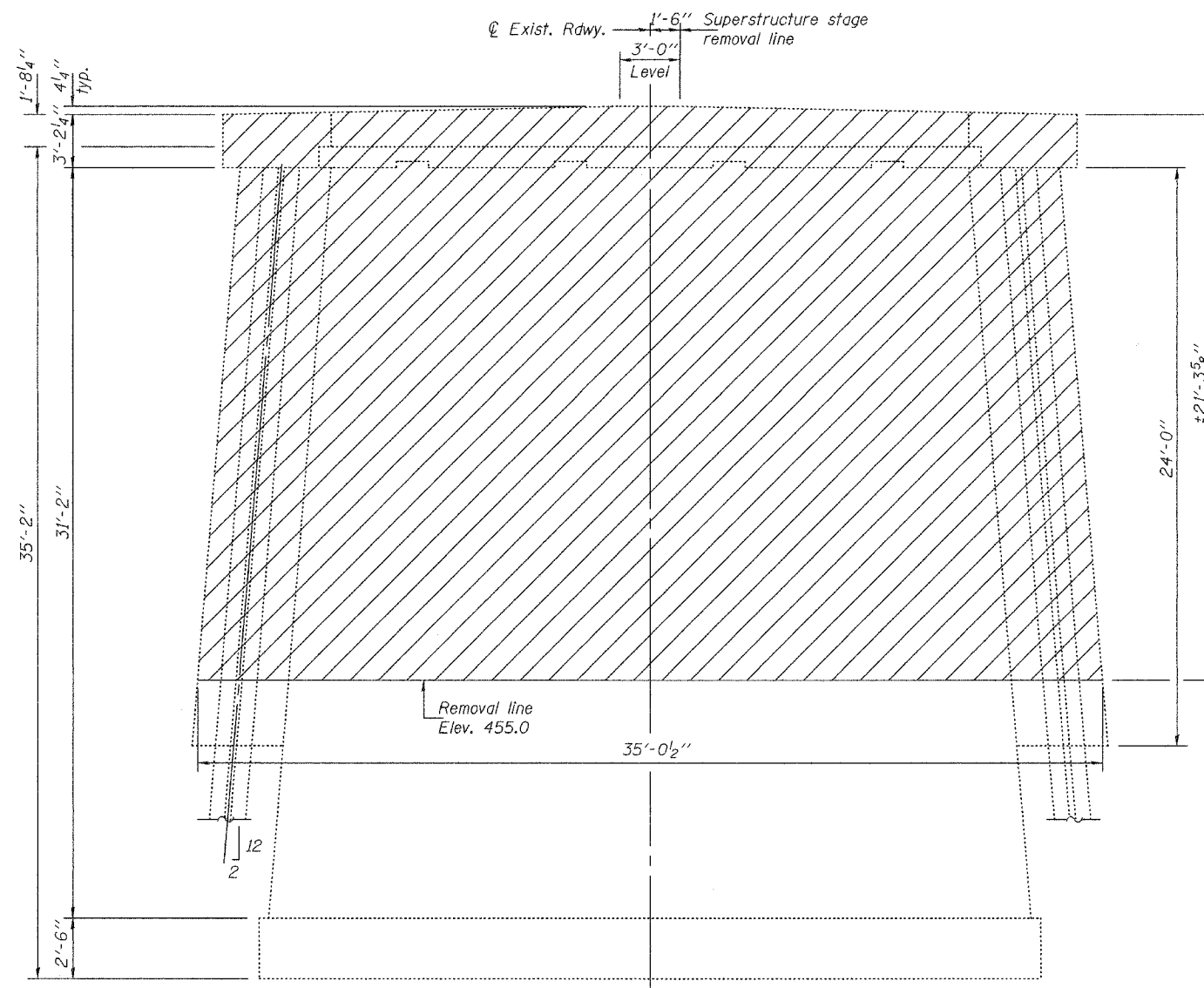


STATE OF ILLINOIS  
DEPARTMENT OF TRANSPORTATION

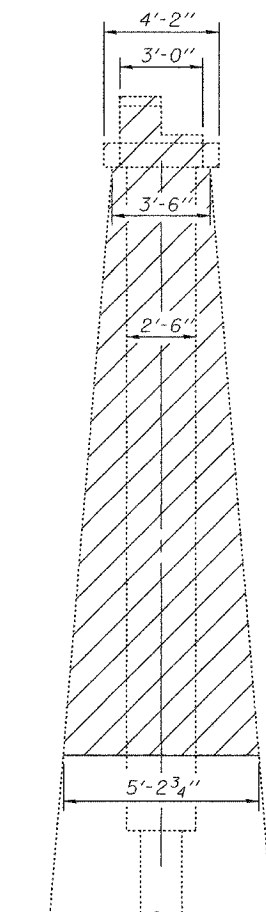
ROUTE NO.	SECTION	COUNTY	TOTAL SHEETS	SHEET NO.
FAP 315	(18BRY-1)BR	FULTON		195
FED. ROAD DIST. NO. 7	BILLINGS	FED. AID PROJECT		

SHEET NO. 31  
46 SHEETS

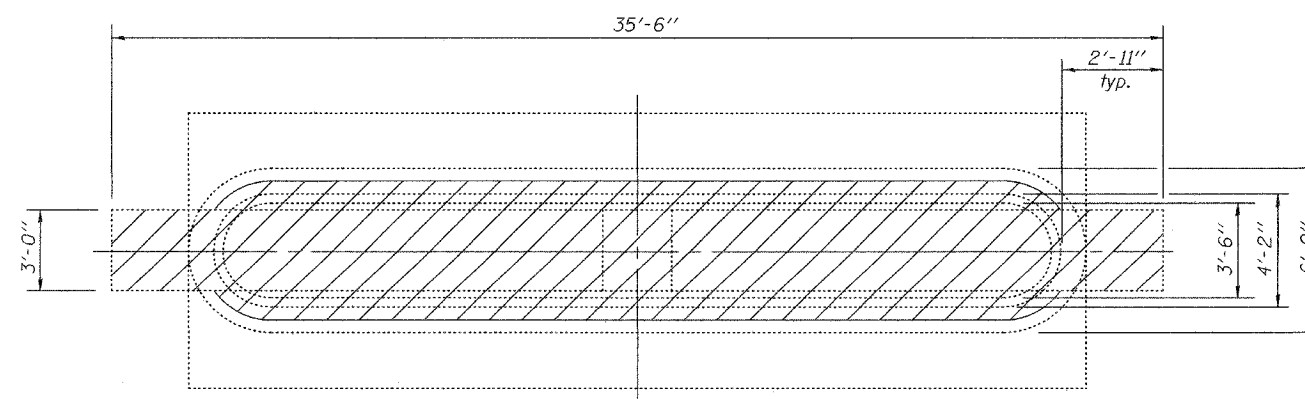
Contract #88753



**ELEVATION**



**END VIEW**



**PLAN**



Notes: Portions of the existing pier to the east of the Stage Removal Line may interfere with the proposed superstructure. The Contractor may need to remove these portions while leaving in place, and undamaged, the portions that are required to support the Stage III & IV Traffic. It is the Contractor's responsibility to remove the interfering portions of the pier, so that it won't interfere with the erection of steel girders. Cost included with Removal of Existing Structures No. 2. Existing reinforcement at the removal line (Elev. 455.0) shall be cut off flush and covered with 2" layer of cement grout. Cost included with Removal of Existing Structures No. 2.

DESIGNED	FT
CHECKED	SMR
DRAWN	h.t. parsons
CHECKED	FT/SMR

May 16, 2005  
EXAMINED *Thomas J. Demagallo*  
ENGINEER OF BRIDGE DESIGN  
PASSED *Ralph E. Anderson*  
ENGINEER OF BRIDGES AND STRUCTURES

Portion of existing pier to be removed. Cost included with Removal of Existing Structures No. 2.

**EXISTING PIER DETAILS**  
F.A.P. RTE. 315 - SEC. (18BRY-1)BR  
FULTON COUNTY  
STATION 74+09.000  
STRUCTURE NO. 029-0068