

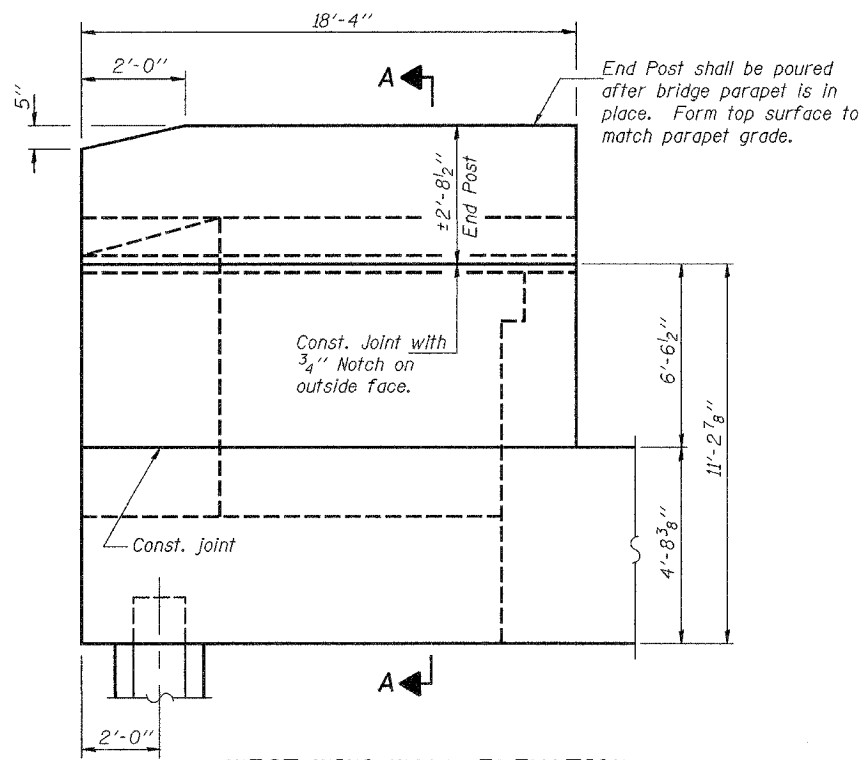
STATE OF ILLINOIS
DEPARTMENT OF TRANSPORTATION

ROUTE NO.	SECTION	COUNTY	STATE SHEETS	SHEET NO.
FAP 315	(18BRY - DBR)	FULTON		199
FED. ROAD DIST. NO. 7	ILLINOIS	FED. AID PROJECT-		

Contract #88753

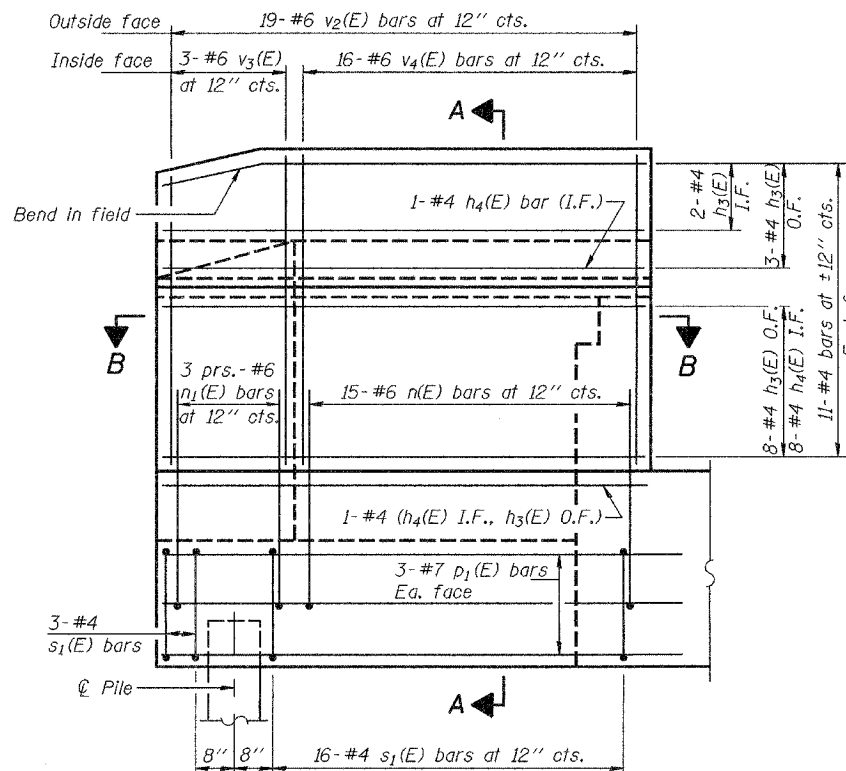
SHEET NO. 33

46 SHEETS



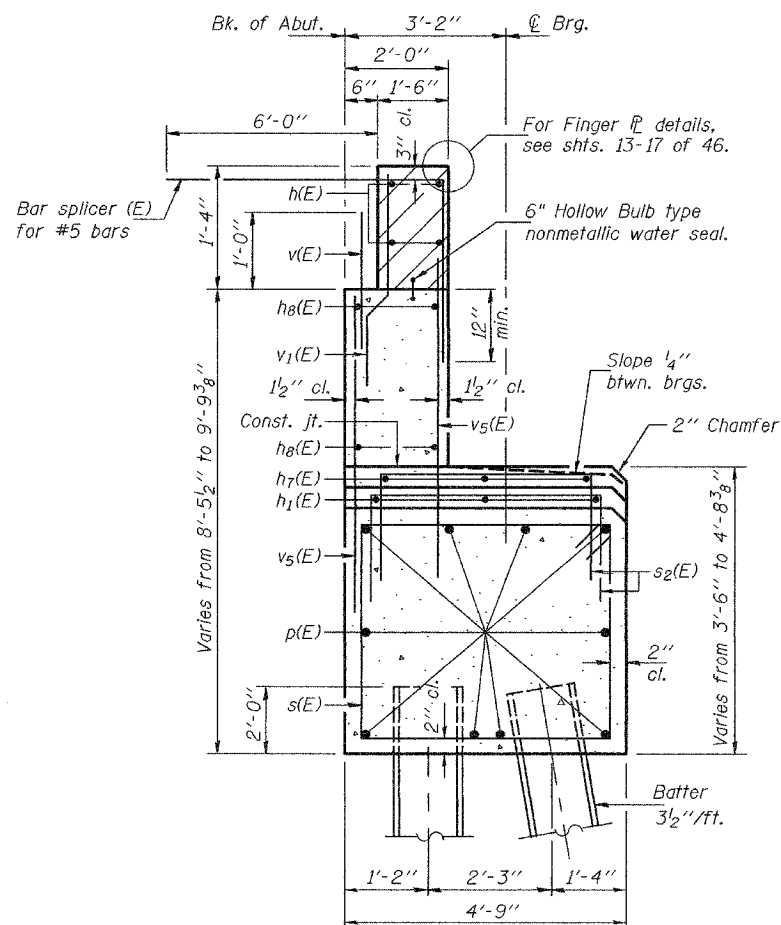
WEST WING WALL ELEVATION

Showing dimensions

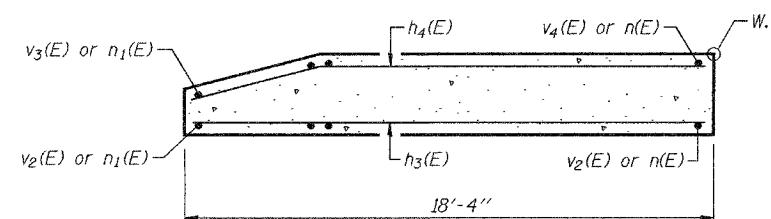


WEST WING WALL ELEVATION

Showing reinforcement

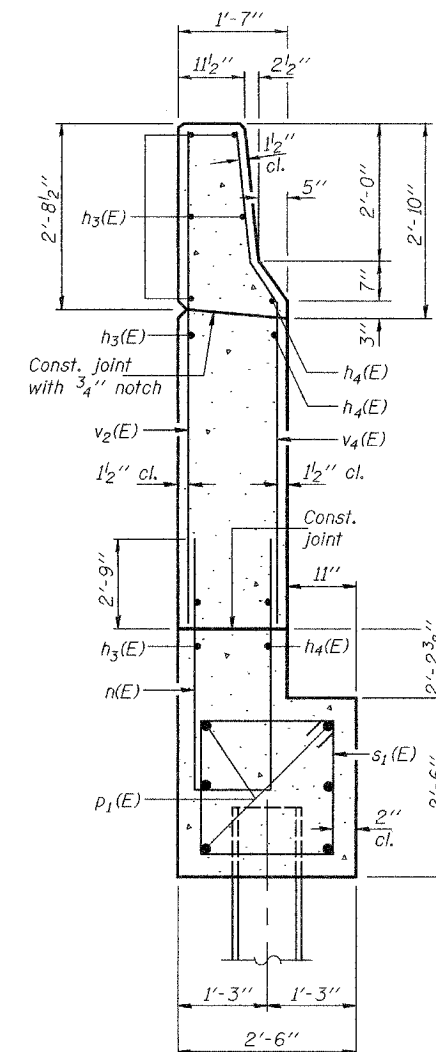


SECTION THRU ABUT.



SECTION B-B

Notes: Hatched area to be poured after superstructure forms have been removed. Quantity of concrete included with Concrete Superstructure. Space reinforcement in cap to miss anchor bolts. Pour steps monolithically with cap. Reinforcement bars designated (E) shall be epoxy coated. Quantity of concrete in end post included with Concrete Superstructure on sheet 11 of 46.



SECTION A-A

DESIGNED	SMR
CHECKED	FT
DRAWN	h.t. parsons
CHECKED	SMR/FT

May 16, 2005
EXAMINED *Thomas J. Damagala*
ENGINEER OF BRIDGE DESIGN
PASSED *Ralph E. Anderson*
ENGINEER OF BRIDGES AND STRUCTURES

NORTH ABUTMENT DETAILS
WEST WING WALL
F.A.P. RTE. 315 - SEC. (18BRY - DBR)
FULTON COUNTY
STATION 74+09.00
STRUCTURE NO. 029-0068