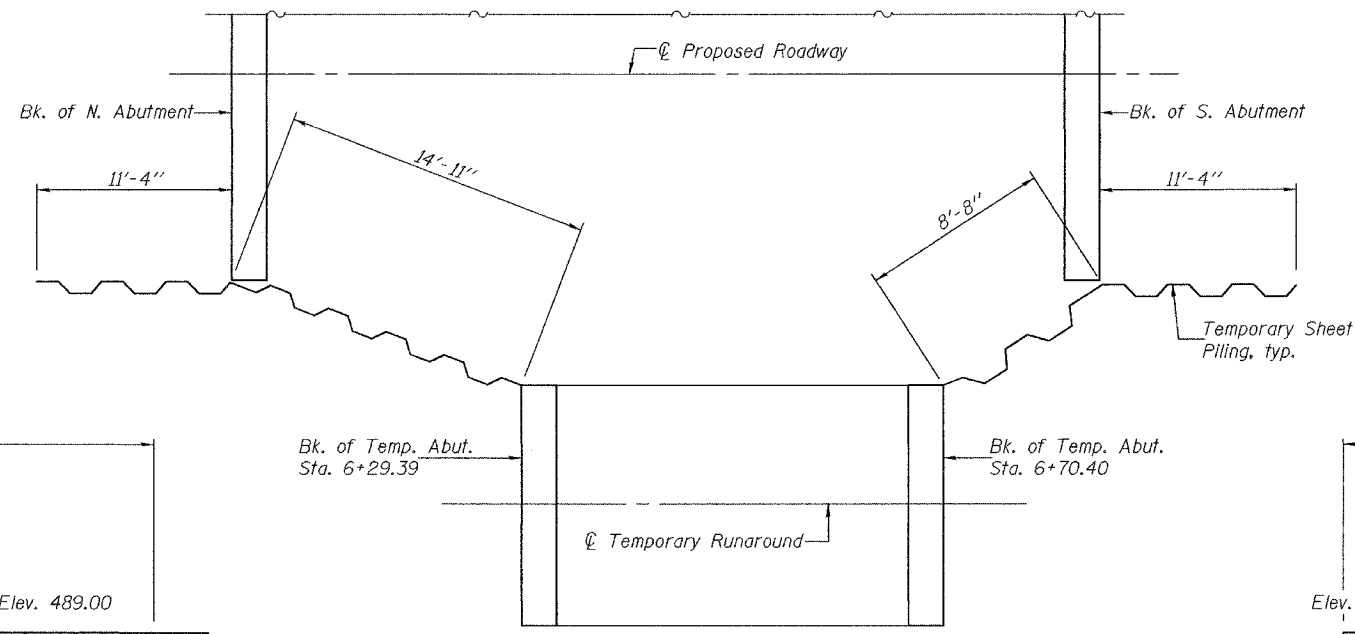


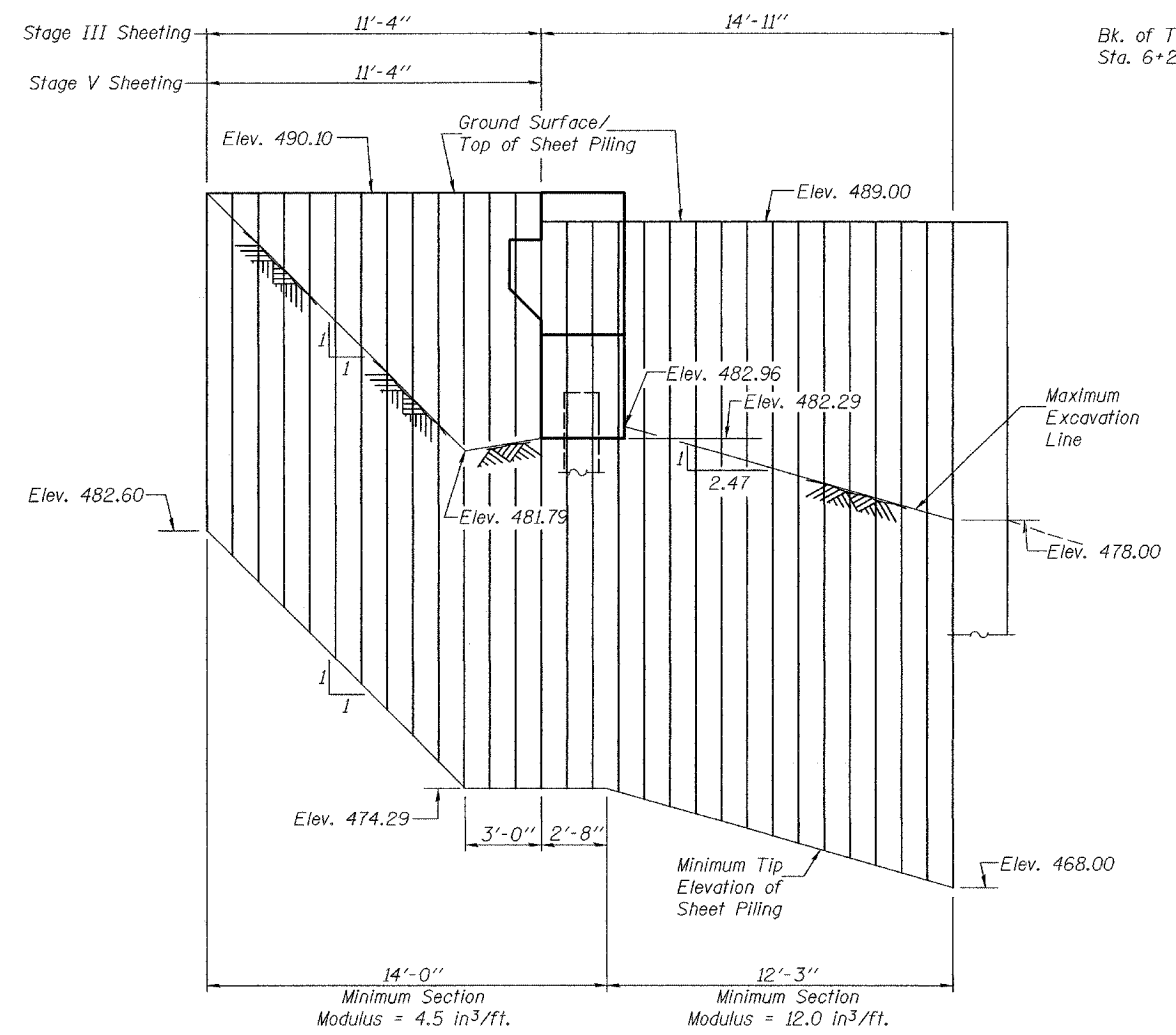
STATE OF ILLINOIS  
DEPARTMENT OF TRANSPORTATION

ROUTE NO.	SECTION	COUNTY	TOTAL SHEETS	SHEET NO.
FAP 315	18B-1	FULTON	13	3
FED. ROAD DIST. NO. 7	ILLINOIS	FED. AID PROJECT		

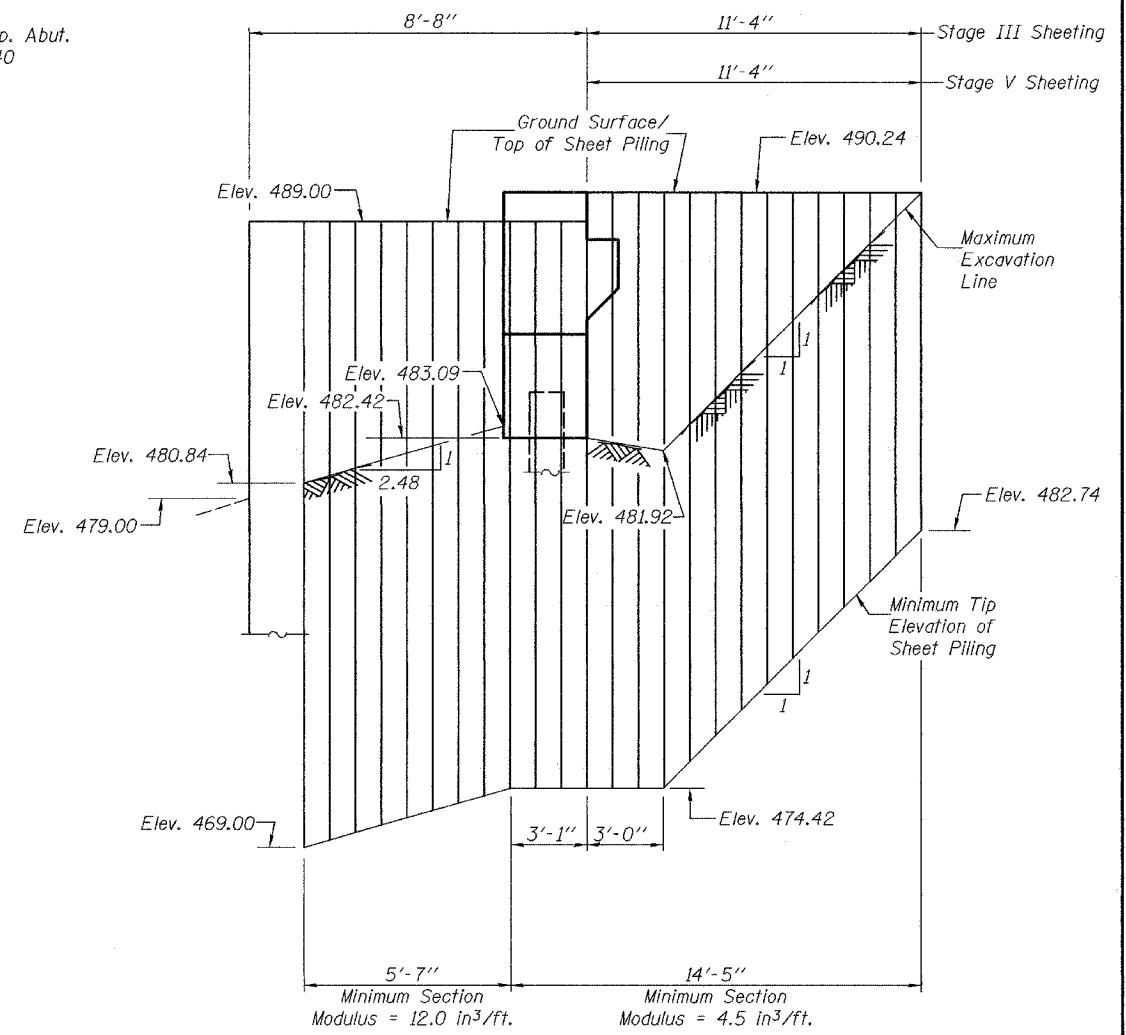
Contract #88753



TEMPORARY SHEET PILING PLAN



ELEVATION AT NORTH ABUTMENT



ELEVATION AT SOUTH ABUTMENT

TEMPORARY SHEET PILING

If the Contractor chooses to alter the temporary cantilevered sheet piling design requirements shown on the plans, a design submittal including plan details and calculations will be required for review and acceptance by the Engineer.

DESIGNED	Stephen M. Ryan
CHECKED	SEM/MDS/RLM
DRAWN	R. Doty OMC
CHECKED	SMR/MDS/SEM

April 11, 2005  
EXAMINED *Thomas J. Domagalak*  
ENGINEER OF BRIDGE DESIGN  
PASSED *Ralph E. Anderson*  
ENGINEER OF BRIDGES AND STRUCTURES

TEMPORARY SHEET PILING DETAILS  
F.A.P. RT. 315 SEC. 18B-1  
FULTON COUNTY  
STATION 84+17.00  
STRUCTURE NO. 029-0060