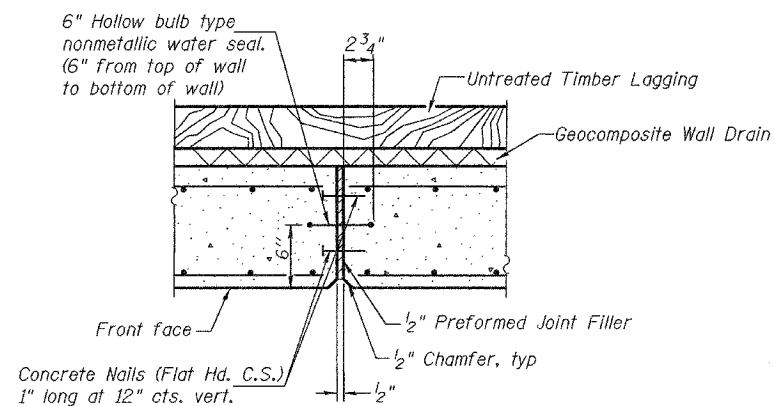


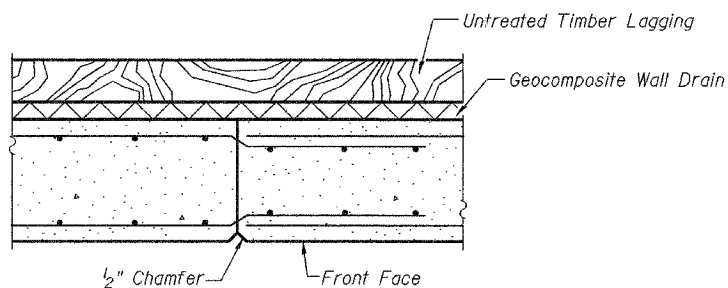
STATE OF ILLINOIS
DEPARTMENT OF TRANSPORTATION

| | | | | |
|-----------------------|----------|-------------------|--------------|-----------|
| ROUTE NO. | SECTION | COUNTY | TOTAL SHEETS | SHEET NO. |
| F.A.P. 315 | # | FULTON | 9 | 7 |
| FED. ROAD DIST. NO. 7 | ILLINOIS | FED. AID PROJECT- | | |

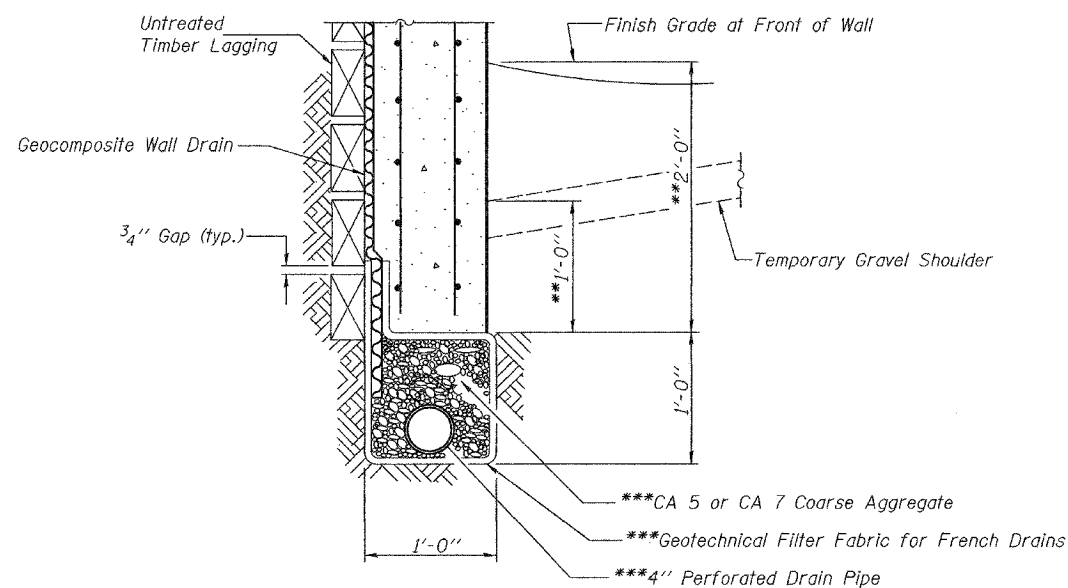
Contract #88753
*18RS-2, 19RS-3 (18BRY & 18BRY-1) BR, 18B-1



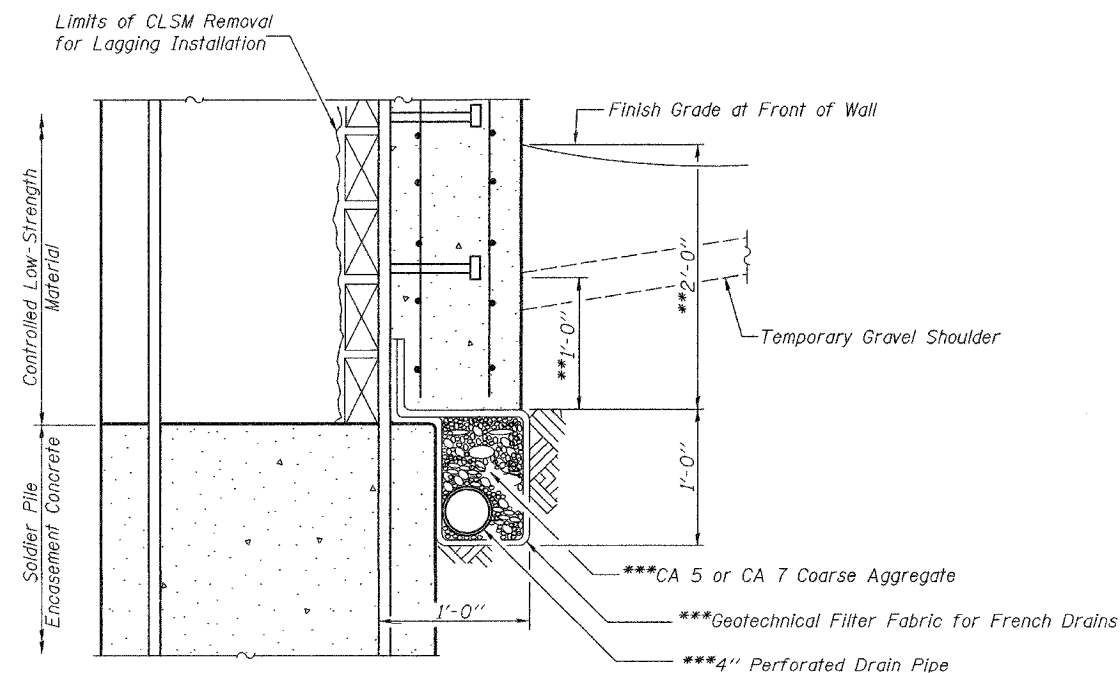
EXPANSION JOINT DETAIL



CONSTRUCTION JOINT DETAIL



PIPE UNDERDRAIN BETWEEN SOLDIER PILES



PIPE UNDERDRAIN AT SOLDIER PILES

**Top of underdrain will be at least 2'-0" below finish grade at front wall and at least 1'-0" below top of temporary shoulder (at front of wall).

***Cost included with Pipe Underdrains for Structures 4".

| | |
|----------|----------------|
| DESIGNED | DFZ |
| CHECKED | SMR |
| DRAWN | BECKY M. CURRY |
| CHECKED | DFZ, SMR & SEM |

APR 28, 2005

EXAMINED *Thomas J. Damagala*
PRINCIPAL ENGINEER

PASSED *Ralph E. Anderson*
ENGINEER OF BRIDGES AND STRUCTURES

SOLDIER PILE WALL DETAILS
F.A.P. RTE. 315 - SEC. 18RS-2, 19RS-3,
(18BRY & 18BRY-1) BR, 18B-1
FULTON COUNTY
RT. STATION 80+00 to 82+10
STRUCTURE NO. 029-W501