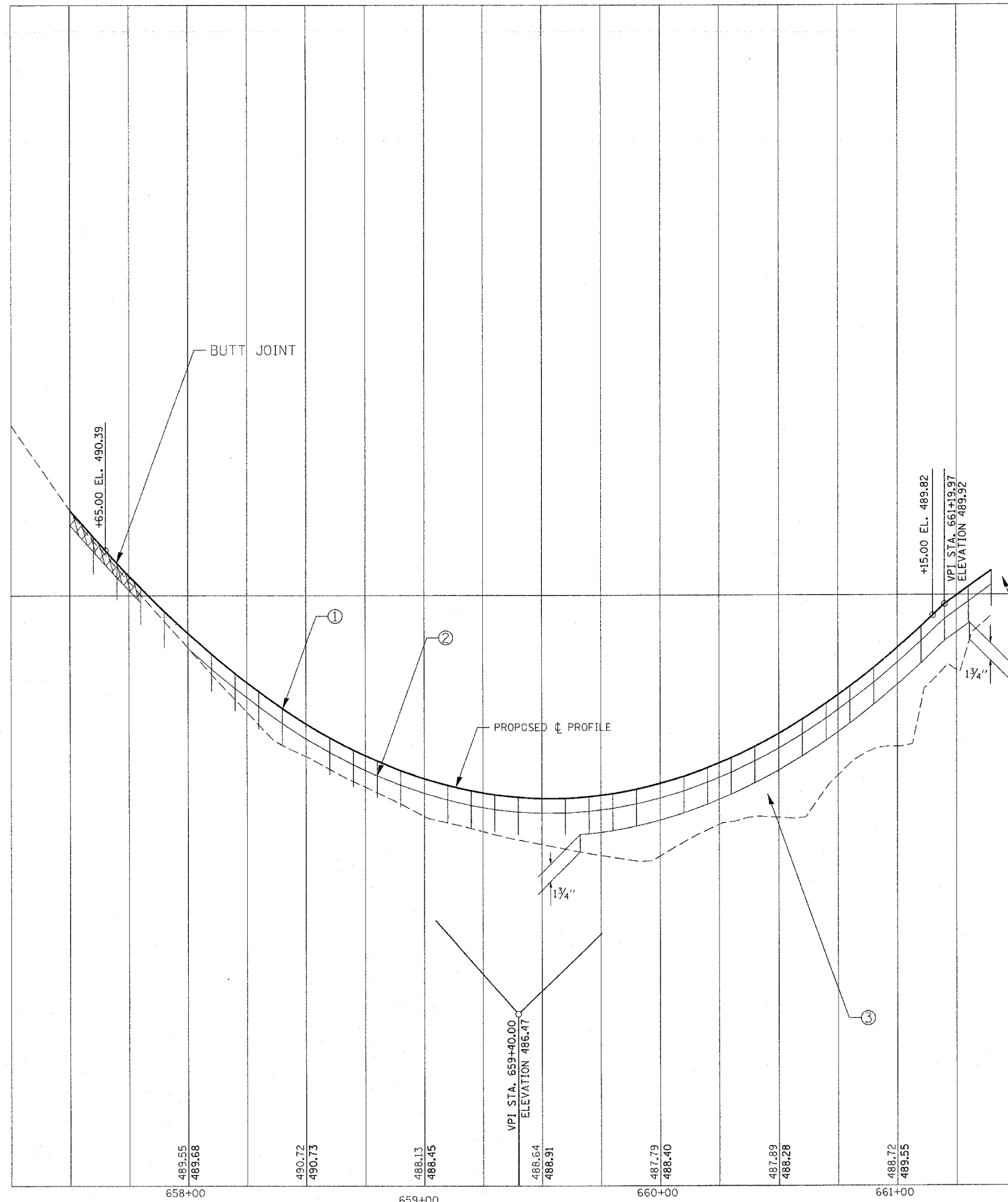


F.A.P. RTE.	SECTION	COUNTY	TOTAL SHEETS	SHEET NO.
317	***	FULTON	684	242
STA.		TO STA.		
FED. ROAD DIST. NO.		ILLINOIS FED. AID PROJECT		

*** 181,088RY&188RY-18R,18B-1

LEGEND

- ① STA 657+50.00 TO STA 661+39.69
POLYMERIZED BIT. CONC. SURFACE COURSE 1 1/2"
- ② STA 658+00.51 TO STA 661+39.69
POLYMERIZED BIT. CONC. BINDER COURSE 2 1/4"
- ③ STA 659+66.16 TO STA 661+30.46
POLYMERIZED BIT. CONC. BINDER COURSE 2 1/4"
1ST LIFT
TAPER TO 1 3/4" AT EACH END



INTERSECTION WITH US 24

REVISIONS	
NAME	DATE

ILLINOIS DEPARTMENT OF TRANSPORTATION
**PROPOSED VARIABLE
 PAVING DETAIL**
 US 136
 STA 657+50 TO STA 661+39.69

SCALE: VERT. / HORIZ.
 DATE / DATE

DRAWN BY / CHECKED BY