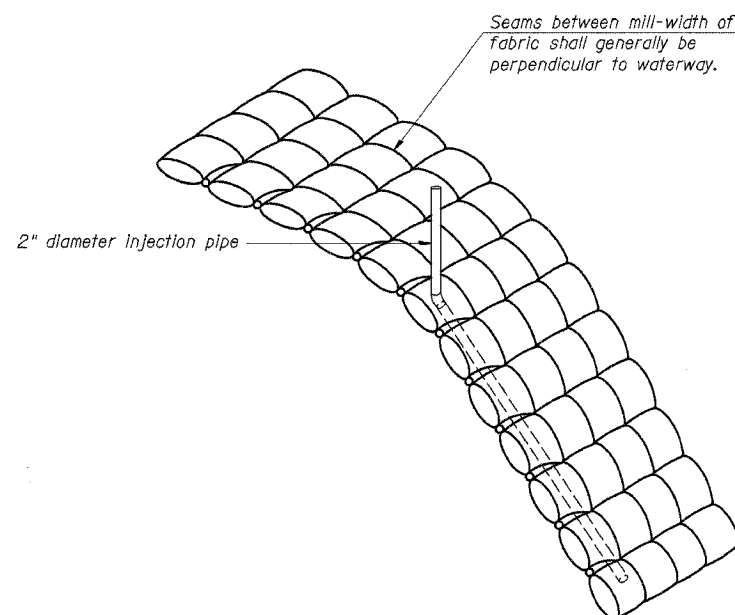
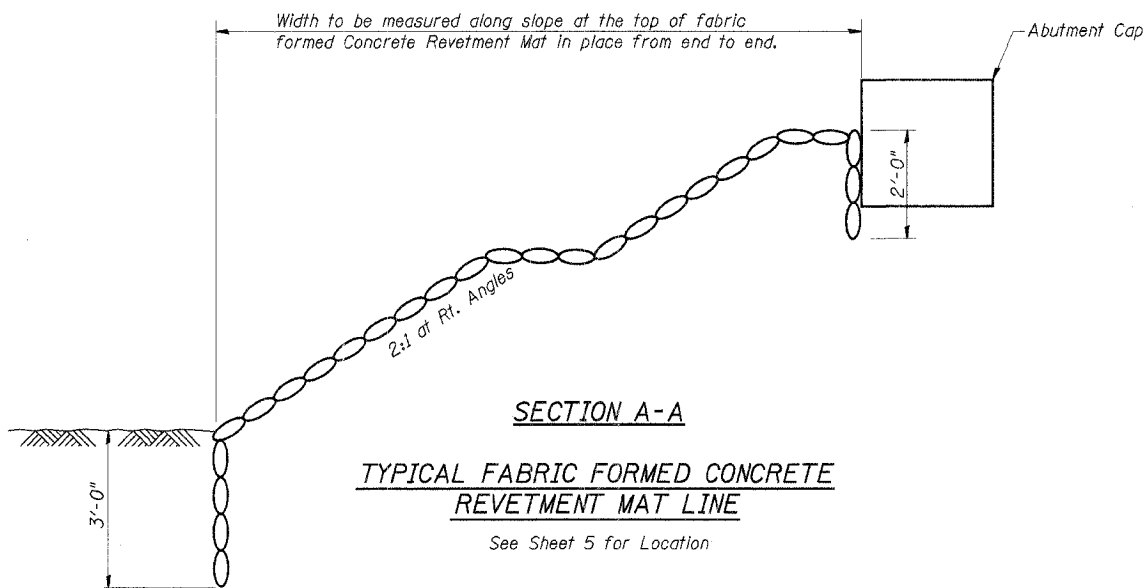


ROUTE NO.	SECTION	COUNTY	TOTAL SHEETS	SHEET NO.
T.R. 66	04-04125-00-BR	PIATT	15	6
ROAD DIST.	ILLINOIS		GOOSE CREEK	
CONTRACT NO. 91309				



INSTALLATION DETAIL

Locate mortar stops to accommodate mortar quantities to be injected.

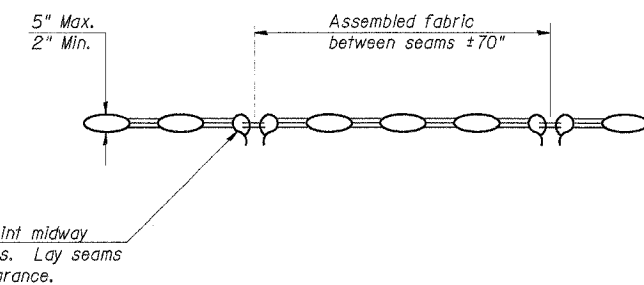


GENERAL NOTES

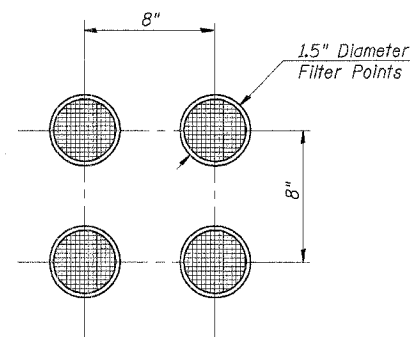
In placing insert points through fabric use extreme care to avoid breaking drop stitches.

Injection points shall be no more than 30 feet apart on the horizontal.

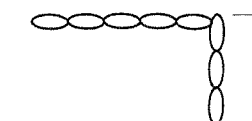
Cut off walls shall be installed at the upstream and downstream ends of the mat.



TYPICAL SECTION THRU FILTER POINT MAT

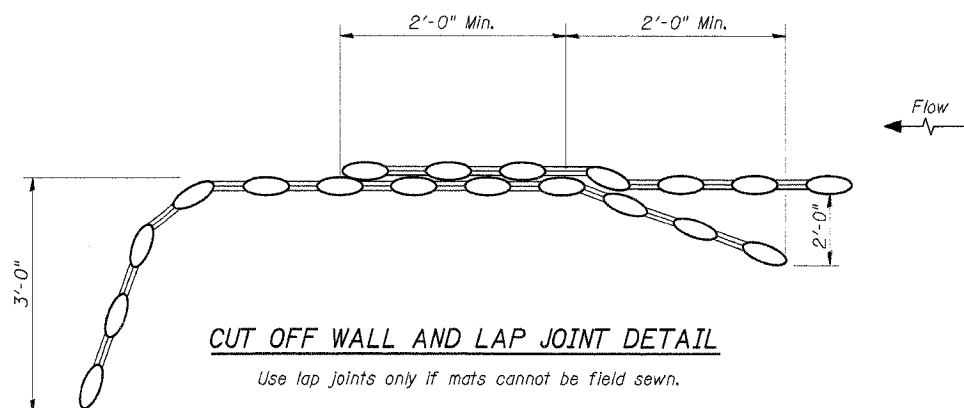


LAYOUT OF FILTER POINTS



SECTION B-B

See Sheet 5



BILL OF MATERIAL

Item	Unit	Quantity
Fabric Formed Concrete Revetment Mat	Sq. Yd.	340

DESIGNED	S.F.M.
CHECKED	F.J.S.
DRAWN	S.A.P. & J.P.S.
CHECKED	F.J.S.

CONCRETE REVETMENT MAT DETAILS

SECTION 04-04125-00-BR
GOOSE CREEK ROAD DISTRICT
PIATT COUNTY
STATION 15+24

4440 ASH GROVE
SPRINGFIELD, IL 62711
(217) 783-8600
oasinc@famvid.com

OZYURT AND STONE, INC.
CONSULTING ENGINEERS

JOB NO.: 0324
FILE: REVMAT.DGN
DATE: 01-05-05