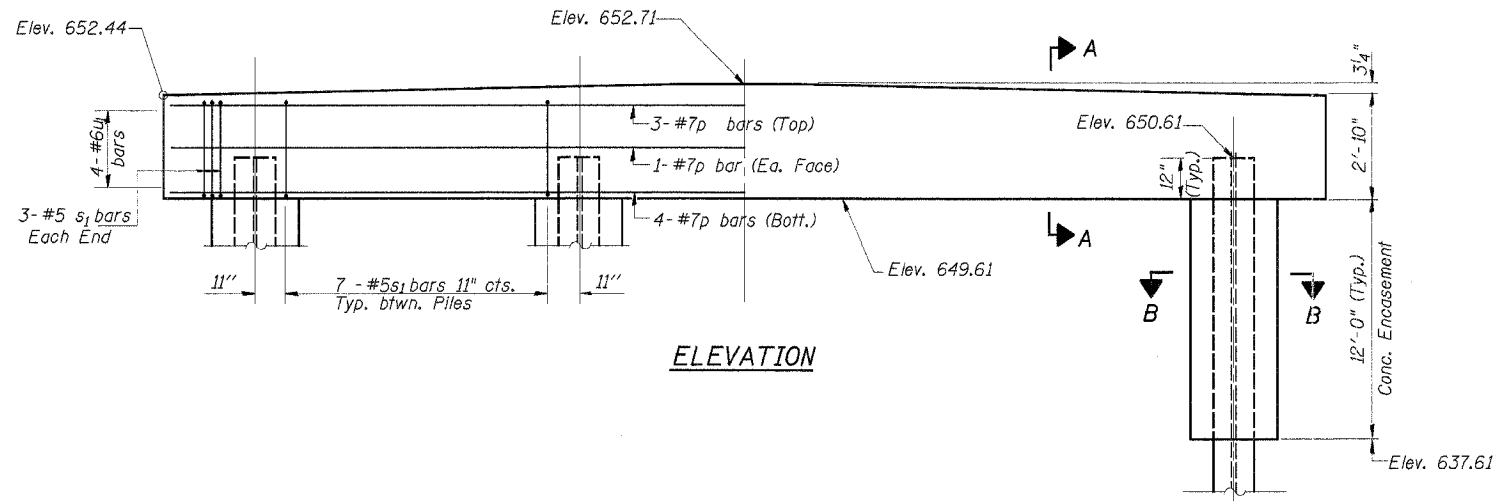
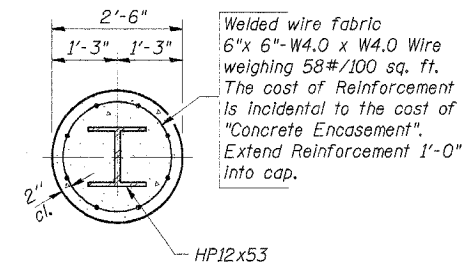
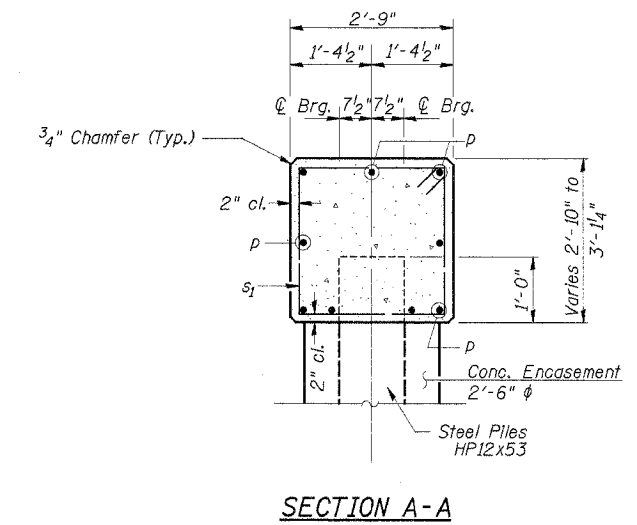
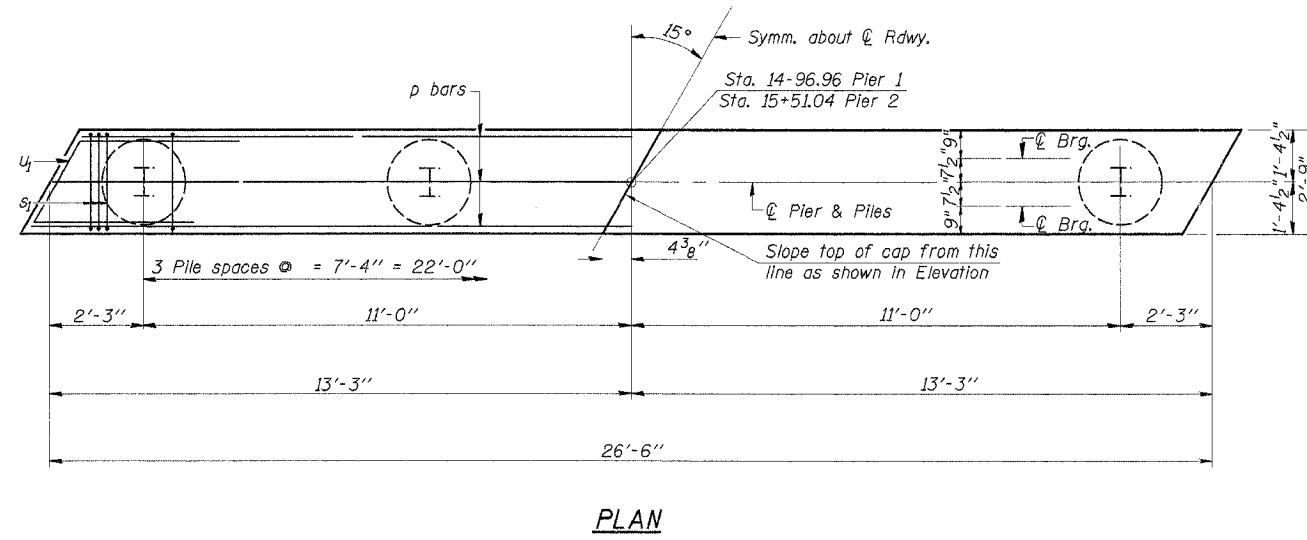


ROUTE NO.	SECTION	COUNTY	TOTAL SHEETS	SHEET NO.
T.R. 66	04-04125-00-BR	PIATT	15	11
ROAD DIST.	ILLINOIS		GOOSE CREEK	
CONTRACT NO. 91309				

Note: All edges shall have standard 3/4" chamfer



PILE DATA

Type Steel HP12x53
 Design Capacity 52 Tons/Pile
 Drive Piles To 70 Ton/Pile
 Est. Length 37 Foot/Pile

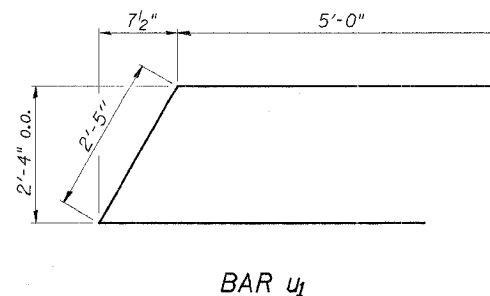
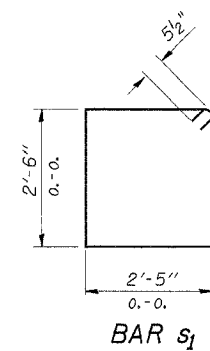
No. Req'd(2 Piers) *8

*Includes one Test Pile to be driven in a permanent location at Pier 2.
 Test Pile to be driven to 100 Ton/Pile

BILL OF MATERIAL - 2 PIERS

BAR	NO.	SIZE	LENGTH	SHAPE
p	18	#7	26'-2"	
s ₁	54	#5	10'-9"	□
u ₁	16	#6	12'-5"	▭
Concrete Structures			Cu. Yd.	16.1
Reinforcement Bars			Pound	1870
Steel Piles HP12x53			Foot	259
Test Pile Steel HP12x53			Each	1
Conc. Encasement			Cu. Yd.	17.5

DESIGNED	S.F.M.
CHECKED	F.J.S.
DRAWN	S.A.P. & J.P.S.
CHECKED	F.J.S.



PIERS

SECTION 04-04125-00-BR
 GOOSE CREEK ROAD DISTRICT
 PIATT COUNTY
 STATION 15+24

4440 ASH GROVE SPRINGFIELD, IL 62711 (217) 793-8600 ossinc@famvic.com	OZYURT AND STONE, INC. CONSULTING ENGINEERS	JOB NO.: 0324 FILE: PIER-RT.DGN DATE: 01-05-05
--	---	--