

ROUTE NO.	SECTION	COUNTY	TOTAL SHEETS	SHEET NO.
T.R. 66	04-04125-00-BR	PIATT	15	1
ROAD DIST.		ILLINOIS	GOOSE CREEK	
CONTRACT NO. 91309				

STATE OF ILLINOIS DEPARTMENT OF TRANSPORTATION DIVISION OF HIGHWAYS PLANS FOR PROPOSED BRIDGE REPLACEMENT AND REHABILITATION PROGRAM

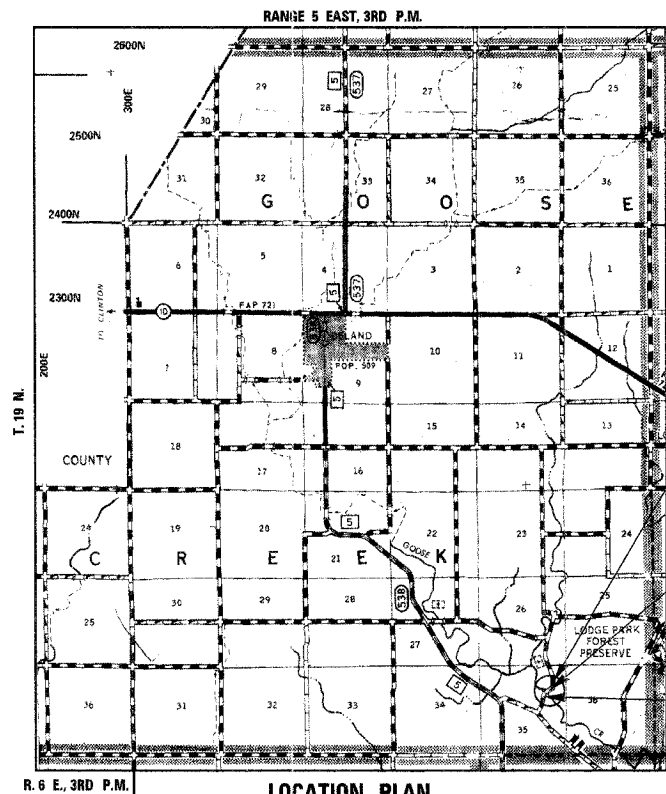
**GOOSE CREEK ROAD DISTRICT
SECTION 04-04125-00-BR
PIATT COUNTY
PROJECT NO. BROS-147(59)
T.R. ROUTE 66**

INDEX OF SHEETS

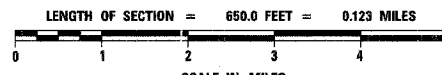
SHEET NO.	TITLE
1.	COVER SHEET
2.	SUMMARY OF QUANTITIES, GENERAL NOTES & TYPICAL SECTIONS
3.	SURVEY TIES
4.	PLAN AND PROFILE SHEET
5.-11.	BRIDGE PLANS
12.-15.	STATION CROSS SECTIONS

STANDARDS

280001-02	TEMPORARY EROSION CONTROL
515001-02	NAME PLATE FOR BRIDGES
630001-05	STEEL PLATE BEAM GUARDRAIL
630301-03	SHOULDER WIDENING FOR TYPE 1 (SPECIAL) GUARDRAIL TERMINALS
631026-02	TRAFFIC BARRIER TERMINAL TYPE 5 & 5A
635006-02	REFLECTOR AND TERMINAL MARKER PLACEMENT
702001-05	TRAFFIC CONTROL DEVICES
BLR 21-6	TYPICAL APPLICATION OF TRAFFIC CONTROL DEVICES FOR CONSTRUCTION ON RURAL LOCAL HIGHWAYS



LOCATION PLAN



**LOCAL ROAD ADT 0-250
CURRENT ADT 87 (2005)
DESIGN SPEED 30 MPH**

**IMPROVEMENT ENDS
STA. 18+50**

**STA. 15+24 - SPECIAL BRIDGE DESIGN
PRECAST PRESTRESSED CONC. DECK
BEAM BRIDGE; 3 SPANS AT 40', 54', 40';
135'-6 3/4" BK.-BK. ABUTS.; 24'-0" ROADWAY
SKEW = 15°
EXISTING S.N. 074-3051
PROPOSED S.N. 074-3300**

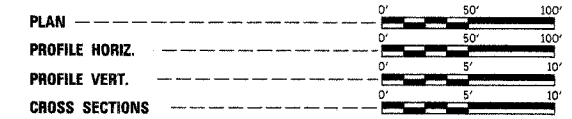
**IMPROVEMENT BEGINS
STA. 12+00**



David J. Stone (2-25-05)
ILLINOIS PROFESSIONAL NO. 26065

EXPIRES 11-30-05

SCALES



TOLL FREE JOINT UTILITY LOCATING
INFORMATION FOR EXCAVATORS (J.U.L.I.E.)
TELEPHONE NUMBER 1-800-892-0123

PASSED	<i>MARSH 23</i>	2005
	<i>David C. Baker</i>	
	ROAD DISTRICT COMMISSIONER	
APPROVED	<i>MARSH 23</i>	2005
	<i>David J. Stone</i>	
	COUNTY ENGINEER	
PASSED	<i>D. J. Stone</i>	3/29 2005
	DISTRICT FIVE ENGINEER OF LOCAL ROADS & STREETS	
APPROVED	<i>M. Mey</i>	29 2005
	DEPUTY DIRECTOR OF HIGHWAYS REGION THREE ENGINEER	
STATE OF ILLINOIS DEPARTMENT OF TRANSPORTATION		

CONTRACT NO. 91309

4440 ASH GROVE
SPRINGFIELD, IL. 62711
(217) 793-8600
oasinc@famvid.com

OZYURT AND STONE, INC.
CONSULTING ENGINEERS

ROUTE NO.	SECTION	COUNTY	TOTAL SHEETS	SHEET NO.
T.R. 66	04-04125-00-BR	PIATT	15	2
ROAD DIST.		ILLINOIS	GOOSE CREEK	
CONTRACT NO. 91309				

SUMMARY OF QUANTITIES

NUMBER	ITEM	UNIT	QUANTITY
* 20100500	TREE REMOVAL, ACRES	ACRE	0.5
20200100	EARTH EXCAVATION	CU YD	68
20300100	CHANNEL EXCAVATION	CU YD	350
* 20400800	FURNISHED EXCAVATION	CU YD	882
* 25001000	SEEDING, CLASS 2 (SPECIAL)	ACRE	0.5
28000250	TEMPORARY EROSION CONTROL SEEDINGS	POUND	100
28000400	PERIMETER EROSION BARRIER	FOOT	1300
28100205	STONE RIPRAP, CLASS A3	TON	100
28500100	FABRIC FORMED CONCRETE REVETMENT MAT	SQ YD	340
* 40200800	AGGREGATE SURFACE COURSE, TYPE B	TON	414
50100100	REMOVAL OF EXISTING STRUCTURES	EACH	1
50300225	CONCRETE STRUCTURES	CU YD	33.8
* 50400405	PRECAST PRESTRESSED CONCRETE DECK BEAMS (21" DEPTH)	SQ FT	3216
50800105	REINFORCEMENT BARS	POUND	4160
50900205	STEEL RAILING, TYPE S1	FOOT	273
51201600	FURNISHING STEEL PILES HP12X53	FOOT	469
51202700	DRIVING STEEL PILES	FOOT	469
51203600	TEST PILE STEEL HP12X53	EACH	2
51204315	CONCRETE ENCASEMENT	CU YD	21.9
51500100	NAME PLATES	EACH	1
63100075	TRAFFIC BARRIER TERMINAL, TYPE 5A	EACH	2
* 63100167	TRAFFIC BARRIER TERMINAL, TYPE 1, SPECIAL (TANGENT)	EACH	2
* 78201000	TERMINAL MARKER - DIRECT APPLIED	EACH	4
* X5020501	UNDERWATER STRUCTURE EXCAVATION PROTECTION - LOCATION 1	EACH	1
* X5020502	UNDERWATER STRUCTURE EXCAVATION PROTECTION - LOCATION 2	EACH	1

*SEE SPECIAL PROVISIONS

GENERAL NOTES

WHERE SECTION OR SUBSECTION MONUMENTS ARE ENCOUNTERED, THE ENGINEER SHALL BE NOTIFIED BEFORE SUCH MONUMENTS ARE REMOVED. THE CONTRACTOR SHALL PROTECT AND CAREFULLY PRESERVE ALL PROPERTY MARKS AND MONUMENTS UNTIL THE OWNER, AND AUTHORIZED SURVEYOR OR AGENT HAS WITNESSED OR OTHERWISE REFERENCED THEIR LOCATION.

THE AREA TO BE SEEDED SHALL CONSIST OF ALL DISTURBED EARTH SURFACES WITHIN THE RIGHT OF WAY, AS DIRECTED BY THE ENGINEER.

SEEDING, CLASS 2 (SPECIAL) = 0.5 ACRE

TREE REMOVAL, ACRES

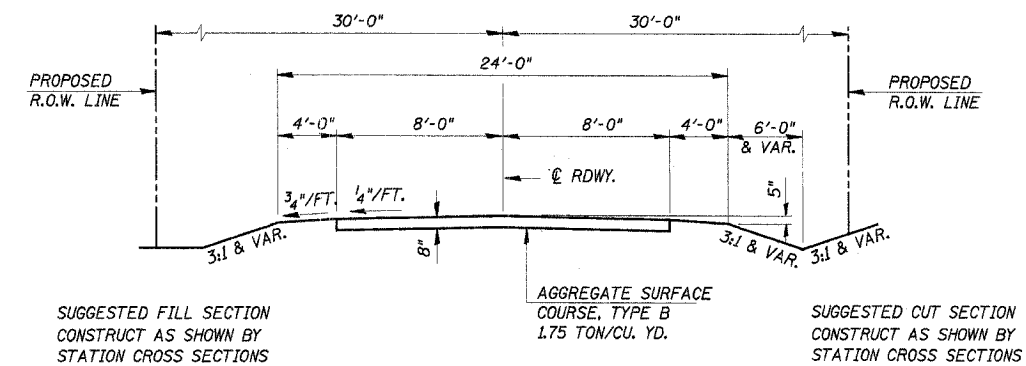
ALL TREES WITHIN THE LIMITS SHOWN BELOW AND THE ADJACENT SHOWN R.O.W. WHICH INTERFERE WITH CONSTRUCTION SHALL BE REMOVED ONLY AS DIRECTED BY THE ENGINEER. SEE SPECIAL PROVISIONS

12' LT. STA. 12+00 TO 12' LT. STA. 18+50 = 0.25 ACRE
 12' RT. STA. 12+00 TO 12' RT. STA. 18+50 = 0.25 ACRE
 TOTAL = 0.50 ACRE

TEMPORARY EROSION CONTROL

THE FOLLOWING QUANTITIES ARE ESTIMATES ONLY. ACTUAL QUANTITIES FOR EROSION CONTROL WILL BE DETERMINED BY THE ENGINEER IN THE FIELD AND THERE WILL BE NO ADJUSTMENT IN ANY PRICE DUE TO A CHANGE IN PLAN QUANTITY.

PERIMETER EROSION BARRIER = 1300 FOOT
 TEMPORARY EROSION CONTROL SEEDINGS = 100 POUND

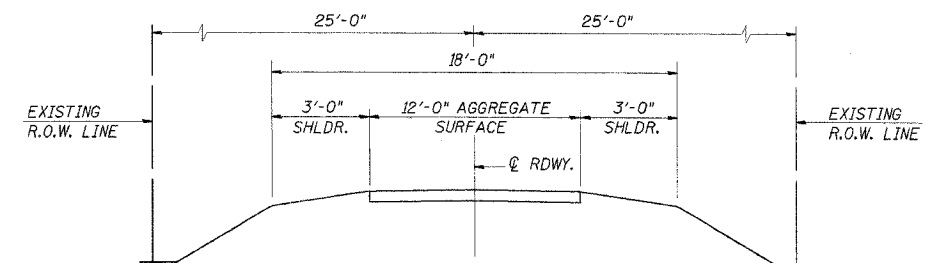


TYPICAL PROPOSED CROSS SECTION

STA. 12+50 TO STA. 18+00

ROAD CLASSIFICATION: LOCAL ROAD ADT 0-250
 CURRENT ADT LESS THAN 150

TRANSITION FROM EXISTING ROADWAY TO PROPOSED ROADWAY TO BE CONSTRUCTED FROM STA. 12+00 TO STA. 12+50 AND FROM STA. 18+00 TO STA. 18+50.



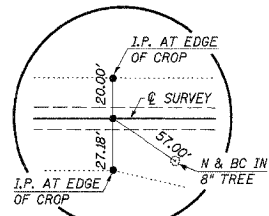
EXISTING TYPICAL CROSS SECTION

SUMMARY OF QUANTITIES, GENERAL NOTES AND TYPICAL CROSS SECTION

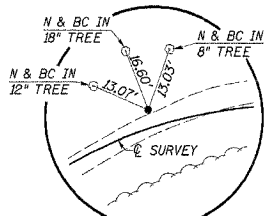
SECTION 04-04125-00-BR
 GOOSE CREEK ROAD DISTRICT
 PIATT COUNTY
 STATION 15+24

4440 ASH GROVE SPRINGFIELD, IL 62711 (217) 793-8600 oasinc@famvid.com	OZYURT AND STONE, INC. CONSULTING ENGINEERS	JOB NO.: 0324 FILE: 0324TYP1.DGN DATE: 01-05-05
--	---	---

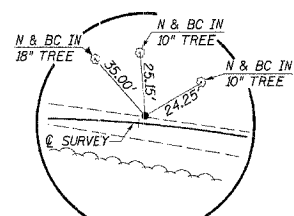
ROUTE NO.	SECTION	COUNTY	TOTAL SHEETS	SHEET NO.
T.R. 66	04-04125-00-BR	PIATT	15	3
ROAD DIST.		ILLINOIS	GOOSE CREEK	
CONTRACT NO. 91309				



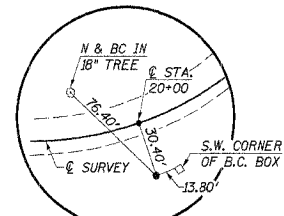
P.O.T. STA. 10+00
IRON PIN (FLUSH)



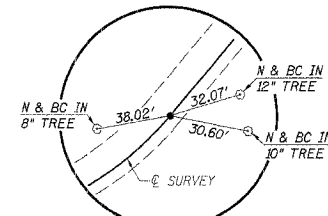
P.I. STA. 13+77.14
IRON PIN (FLUSH)



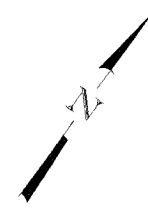
P.I. STA. 17+03.60
IRON PIN (FLUSH)



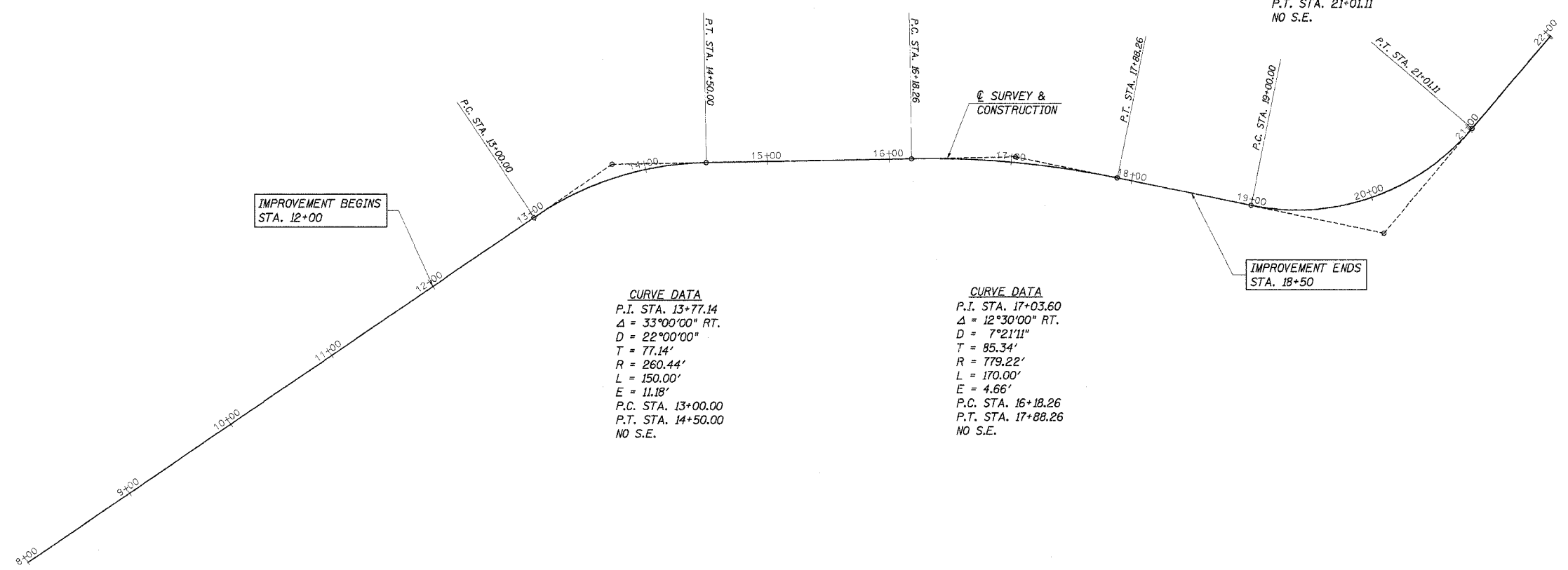
P.I. STA. 20+11.27
IRON PIN (FLUSH)



P.T. STA. 21+01.11
IRON PIN (FLUSH)



CURVE DATA
P.I. STA. 20+11.27
 $\Delta = 61^{\circ}00'00''$ LT.
 $D = 30^{\circ}19'53''$
 $T = 111.27'$
 $R = 188.90'$
 $L = 201.11'$
 $E = 30.34'$
P.C. STA. 19+00.00
P.T. STA. 21+01.11
NO S.E.



CURVE DATA
P.I. STA. 13+77.14
 $\Delta = 33^{\circ}00'00''$ RT.
 $D = 22^{\circ}00'00''$
 $T = 77.14'$
 $R = 260.44'$
 $L = 150.00'$
 $E = 11.18'$
P.C. STA. 13+00.00
P.T. STA. 14+50.00
NO S.E.

CURVE DATA
P.I. STA. 17+03.60
 $\Delta = 12^{\circ}30'00''$ RT.
 $D = 7^{\circ}21'11''$
 $T = 85.34'$
 $R = 779.22'$
 $L = 170.00'$
 $E = 4.66'$
P.C. STA. 16+18.26
P.T. STA. 17+88.26
NO S.E.

ALIGNMENT TIES

SECTION 04-04125-00-BR
GOOSE CREEK ROAD DISTRICT
PIATT COUNTY
STATION 15+24

4440 ASH GROVE SPRINGFIELD, IL 62711 (217) 793-8600 oasinc@famvid.com	OZYURT AND STONE, INC. CONSULTING ENGINEERS	JOB NO.: 0324 FILE: 0324TIES.DGN DATE: 01-05-05
--	---	---

ROUTE	SECTION	COUNTY	TOTAL SHEETS	SHEET NO.
T.R. 66	04-04125 -00-BR	PIATT	15	4
STA. 12+00	TO STA. 21+01.11			
ROAD DISTRICT	ILLINOIS	GOOSE CREEK		
CONTRACT NO. 91309				

CURVE DATA
 P.I. STA. 13+77.14
 $\Delta = 33^{\circ}00'00''$ RT.
 $D = 22^{\circ}00'00''$
 $T = 77.14'$
 $R = 260.44'$
 $L = 150.00'$
 $E = 11.18'$
 P.C. STA. 13+00.00
 P.T. STA. 14+50.00
 NO S.E.

LAWRENCE MARQUISS TRUST

N.E. 1/4, SEC. 35, T. 19 N., R. 5 E., 3RD P.M.

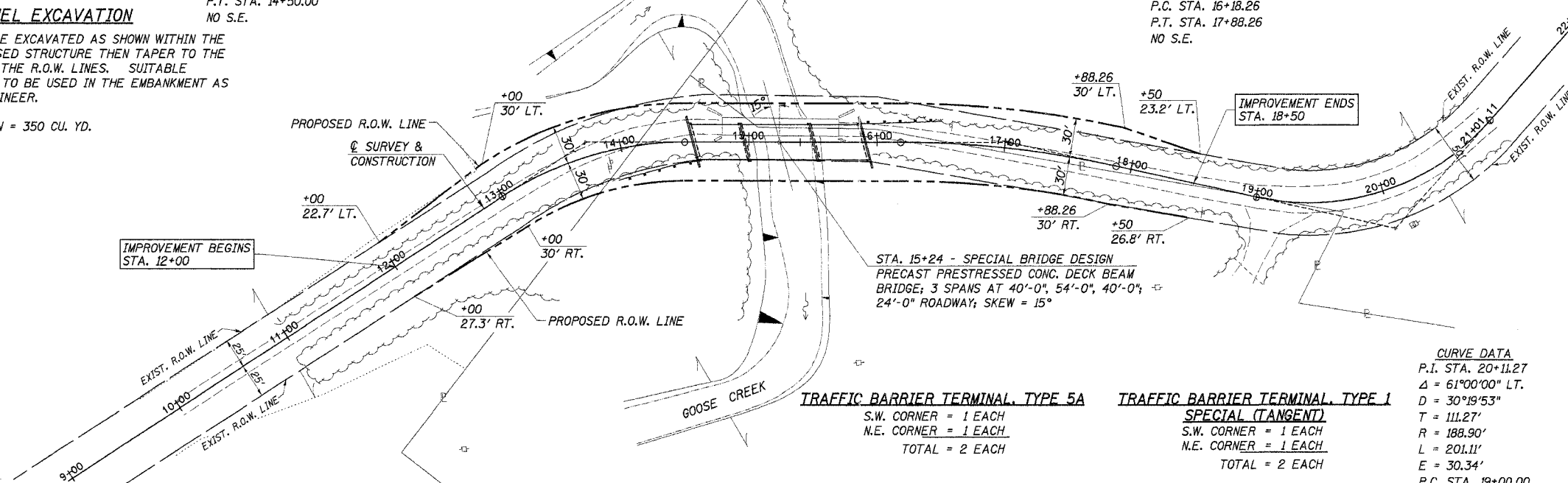
GEORGE TIMMONS

CURVE DATA
 P.I. STA. 17+03.60
 $\Delta = 12^{\circ}30'00''$ RT.
 $D = 7^{\circ}21'11''$
 $T = 85.34'$
 $R = 779.22'$
 $L = 170.00'$
 $E = 4.66'$
 P.C. STA. 16+18.26
 P.T. STA. 17+88.26
 NO S.E.

CHANNEL EXCAVATION

THE CHANNEL SHALL BE EXCAVATED AS SHOWN WITHIN THE LIMITS OF THE PROPOSED STRUCTURE THEN TAPER TO THE EXISTING CHANNEL AT THE R.O.W. LINES. SUITABLE EXCAVATED MATERIAL TO BE USED IN THE EMBANKMENT AS DIRECTED BY THE ENGINEER.

CHANNEL EXCAVATION = 350 CU. YD.



EXISTING STRUCTURE NO. 074-3051

SINGLE SPAN PRATT THRU TRUSS WITH TIMBER DECK ON CLOSED STONE ABUTMENTS AND WINGS.
 91'-0" BK.-BK. ABUTS.; 16'-0" DECK; SKEW = 0°
 REMOVAL OF EXISTING STRUCTURES = 1 EACH

OVERHEAD POWER

ILLINOIS POWER COMPANY
 BILL NIEBRUGGE
 618-236-6201

BURIED CABLE

VERIZON NORTH, INC.
 JONNA FRICKE
 309-663-3422

CURVE DATA
 P.I. STA. 20+11.27
 $\Delta = 61^{\circ}00'00''$ LT.
 $D = 30^{\circ}19'53''$
 $T = 111.27'$
 $R = 188.90'$
 $L = 201.11'$
 $E = 30.34'$
 P.C. STA. 19+00.00
 P.T. STA. 21+01.11
 NO S.E.

N.E. 1/4, SEC. 35, T. 19 N., R. 5 E., 3RD P.M.

JOHN C. STODDARD II

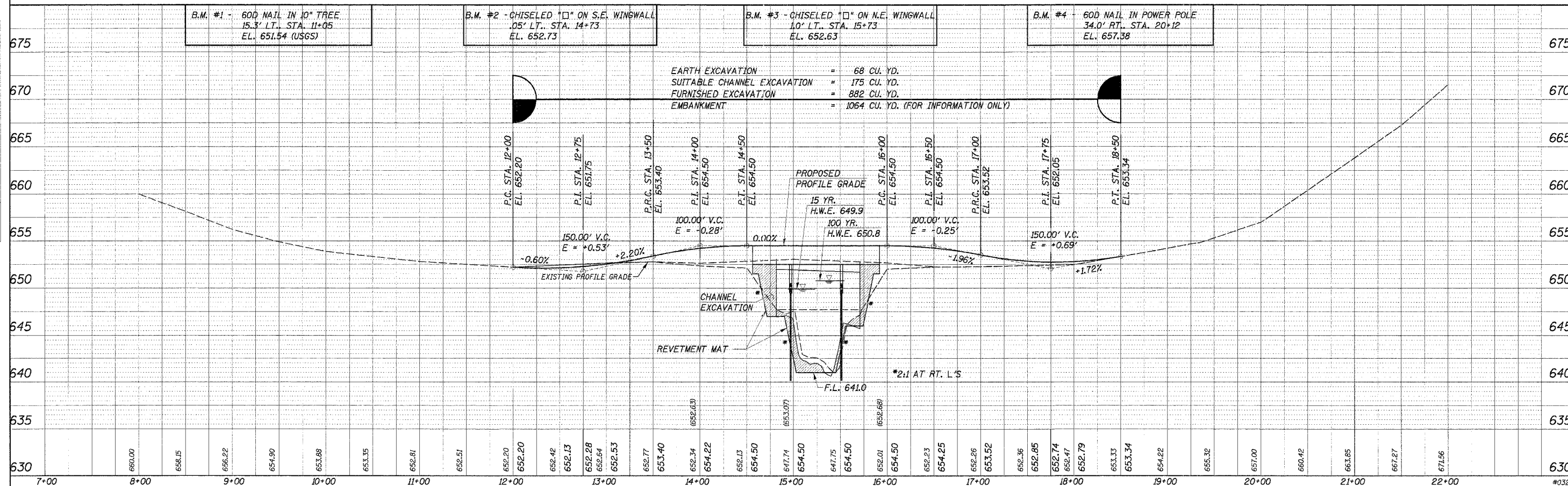
B.M. #1 - 60D NAIL IN 10" TREE
 15.3' LT., STA. 11+05
 EL. 651.54 (USGS)

B.M. #2 - CHISELED "□" ON S.E. WINGWALL
 .05' LT., STA. 14+73
 EL. 652.73

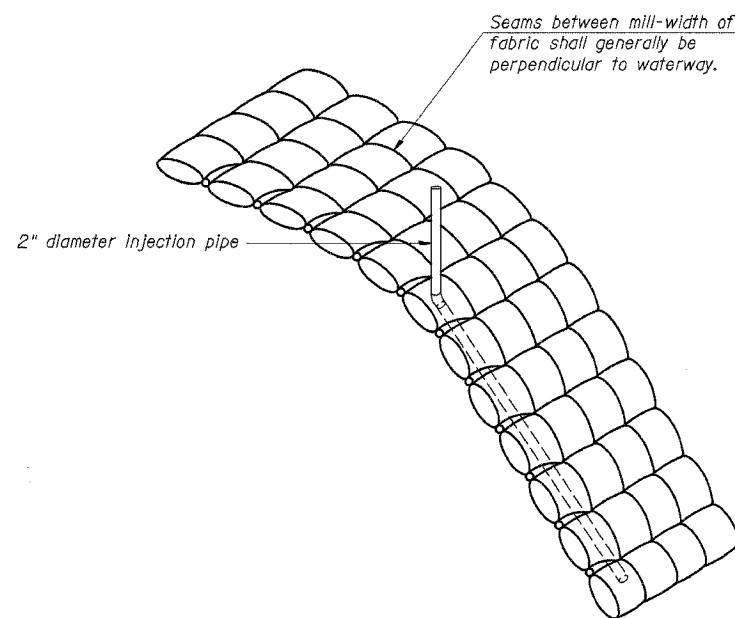
B.M. #3 - CHISELED "□" ON N.E. WINGWALL
 1.0' LT., STA. 15+73
 EL. 652.63

B.M. #4 - 60D NAIL IN POWER POLE
 34.0' RT., STA. 20+12
 EL. 657.38

EARTH EXCAVATION = 68 CU. YD.
 SUITABLE CHANNEL EXCAVATION = 175 CU. YD.
 FURNISHED EXCAVATION = 882 CU. YD.
 EMBANKMENT = 1064 CU. YD. (FOR INFORMATION ONLY)

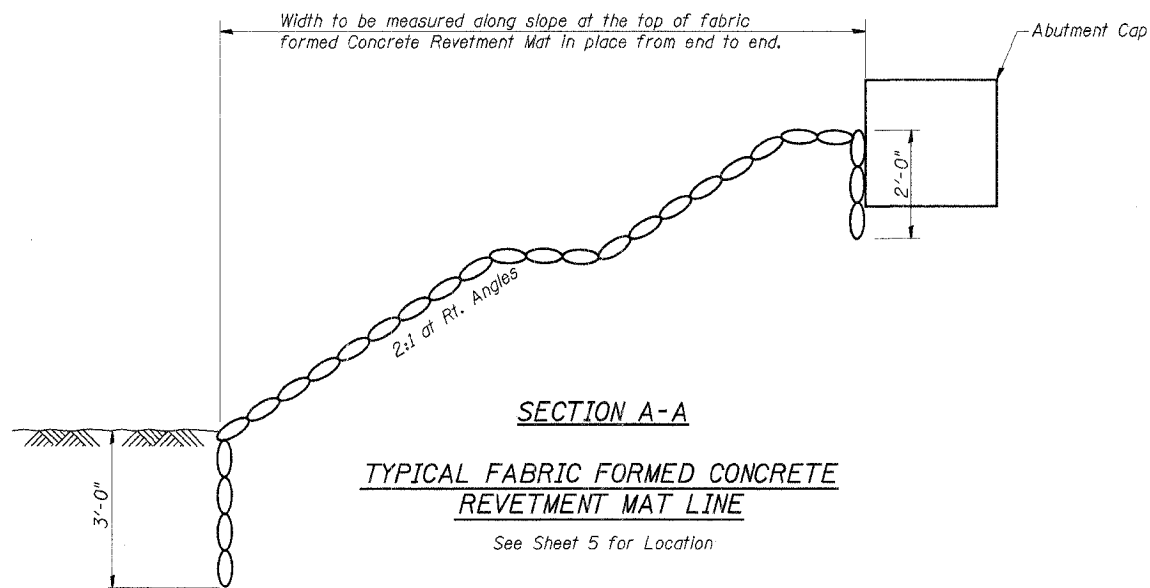


ROUTE NO.	SECTION	COUNTY	TOTAL SHEETS	SHEET NO.
T.R. 66	04-04125-00-BR	PIATT	15	6
ROAD DIST.	ILLINOIS	GOOSE CREEK		
CONTRACT NO. 91309				



INSTALLATION DETAIL

Locate mortar stops to accommodate mortar quantities to be injected.

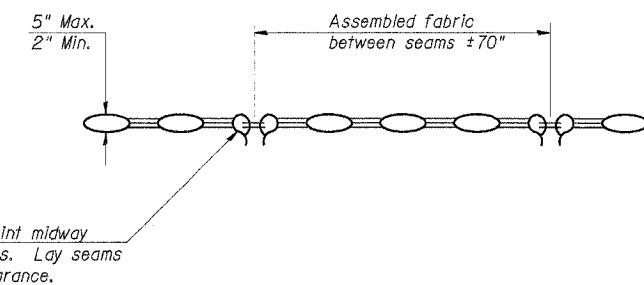


GENERAL NOTES

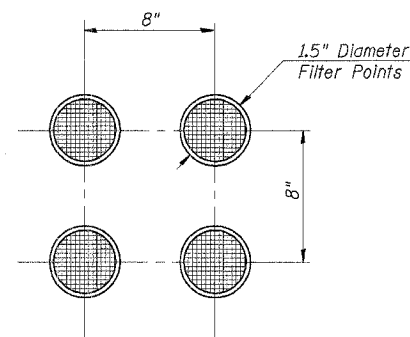
In placing insert points through fabric use extreme care to avoid breaking drop stitches.

Injection points shall be no more than 30 feet apart on the horizontal.

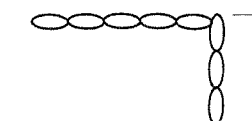
Cut off walls shall be installed at the upstream and downstream ends of the mat.



TYPICAL SECTION THRU FILTER POINT MAT

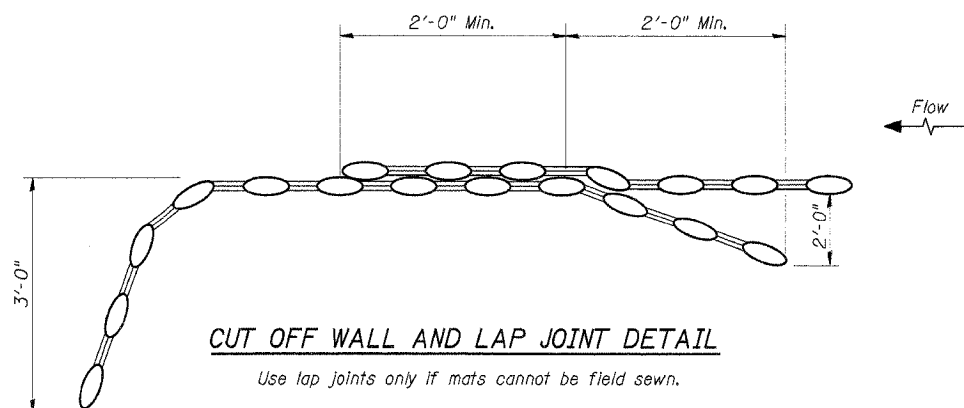


LAYOUT OF FILTER POINTS



SECTION B-B

See Sheet 5



BILL OF MATERIAL

Item	Unit	Quantity
Fabric Formed Concrete Revetment Mat	Sq. Yd.	340

DESIGNED	S.F.M.
CHECKED	F.J.S.
DRAWN	S.A.P. & J.P.S.
CHECKED	F.J.S.

CONCRETE REVETMENT MAT DETAILS

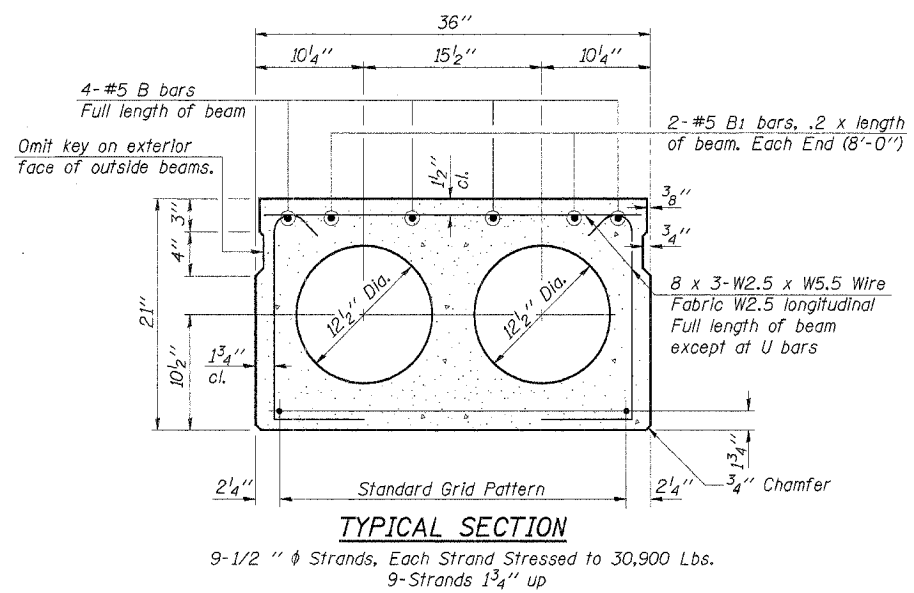
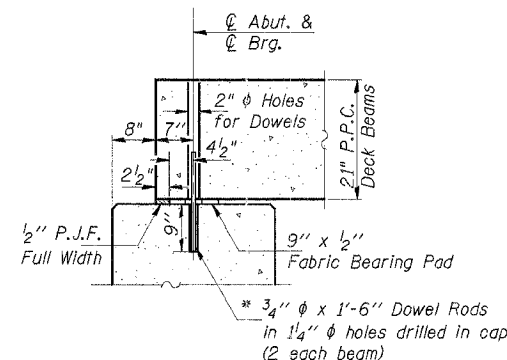
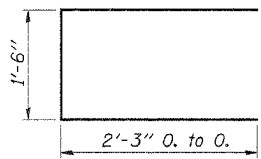
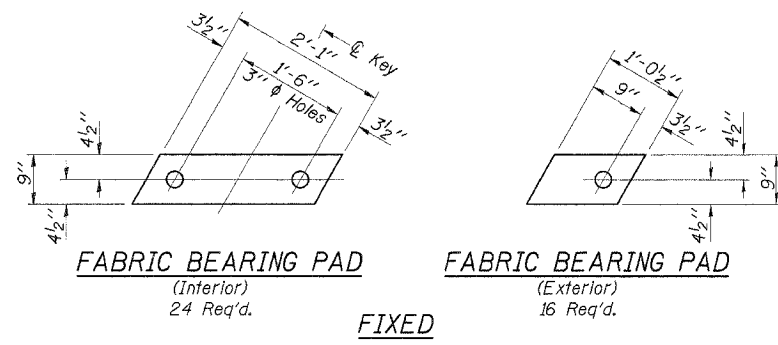
SECTION 04-04125-00-BR
GOOSE CREEK ROAD DISTRICT
PIATT COUNTY
STATION 15+24

4440 ASH GROVE
SPRINGFIELD, IL 62711
(217) 783-8600
oasinc@famvid.com

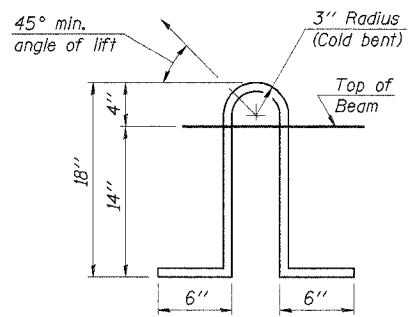
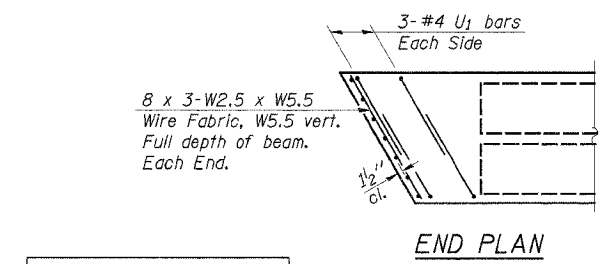
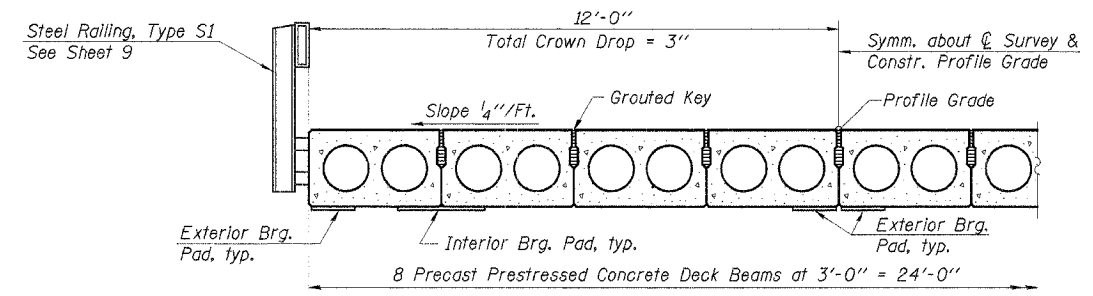
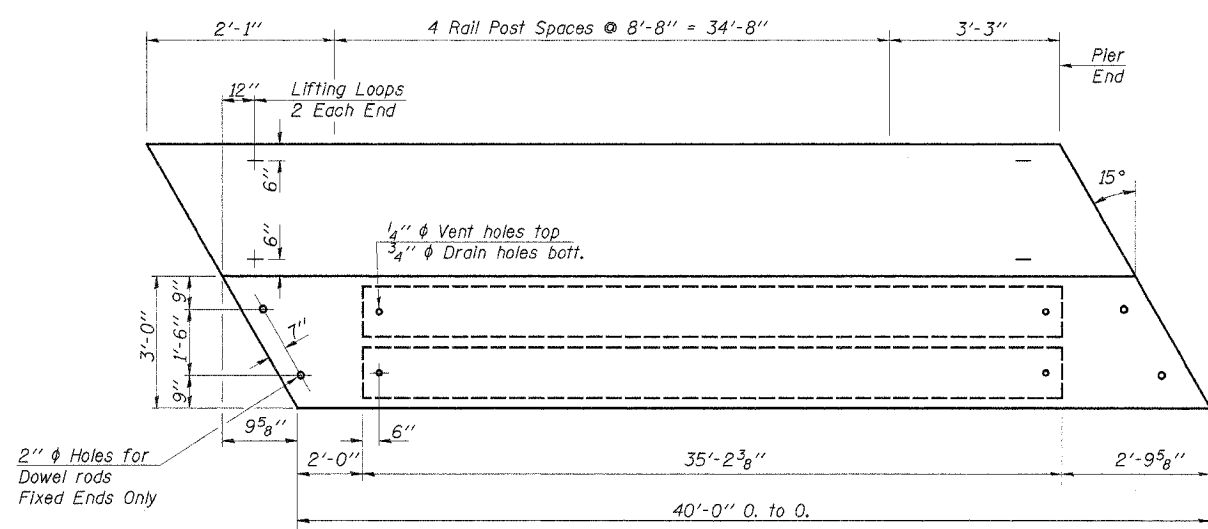
OZYURT AND STONE, INC.
CONSULTING ENGINEERS

JOB NO.: 0324
FILE: REVMAT.DGN
DATE: 01-05-05

ROUTE NO.	SECTION	COUNTY	TOTAL SHEETS	SHEET NO.
T.R. 66	04-04125-00-BR	PIATT	15	7
ROAD DIST.	ILLINOIS GOOSE CREEK			
CONTRACT NO. 91309				



Note:
Place strands symmetrically about ϕ of beam.



NOTES

Prestressing steel shall be uncoated high strength, low relaxation 7-wire strand, Grade 270. The nominal diameter shall be 1/2" and the nominal cross-sectional area shall be 0.153 sq. in. Lifting loops shall be 2 - 1/2" ϕ -270 ksi strands, as shown.

The 1" ϕ rods in the transverse tie assembly shall be tightened to a snug fit and the threads set. Pockets that receive transverse tie bar on outside shall be filled with grout after transverse tie assembly is in place.

Non prestressing steel shall conform to AASHTO M-31, M-42 or M-53 Grade 60.

The bearing seat surfaces shall be adjusted by shimming to assure firm and even bearing. Two 1/8" fabric adjusting shims of the dimensions of the Exterior Bearing Pad shall be provided for each bearing. (80 Req'd.)

Keyway surfaces shall be cleaned to remove form oil or other bond breaking material prior to shipment of the beams. Cleaning shall be done by sandblasting the keyway areas between top of the beam and the bottom edge of the key.

Corrosion Inhibitor, as covered in the Special Provisions, shall be used in the concrete for precast prestressed concrete deck beams.

Required Release Strength, f'ci, shall be 4,000 p.s.i.

See Special Provisions for review and distribution of shop drawings.

Rail post anchor devices shall be cast into outside beam as elsewhere specified.

BILL OF MATERIAL

Item	Unit	Quantity
Precast Prestressed Concrete Deck Beams (21" Depth)	Sq. Ft.	1,920

Estimated Total Weight (One Beam) = 23,270 Pounds

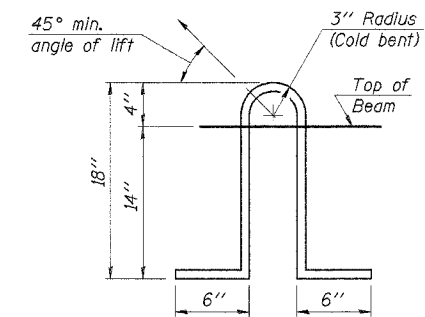
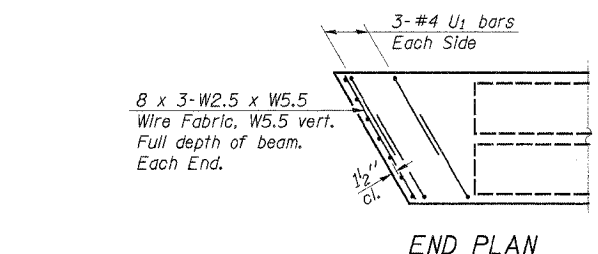
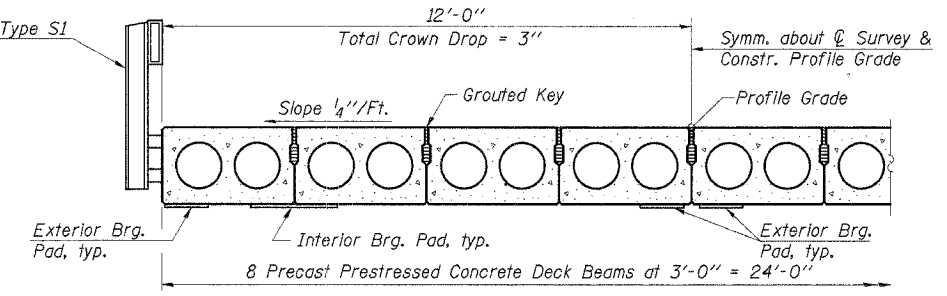
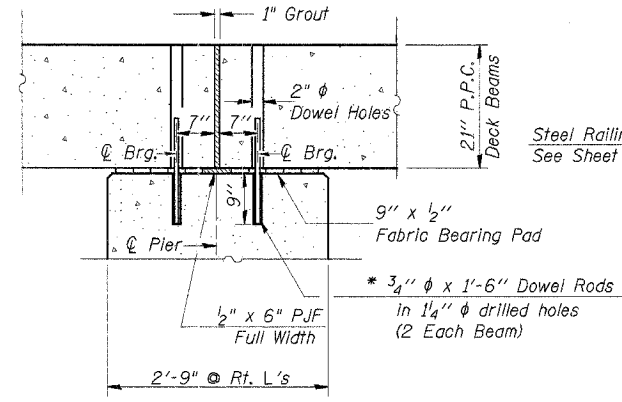
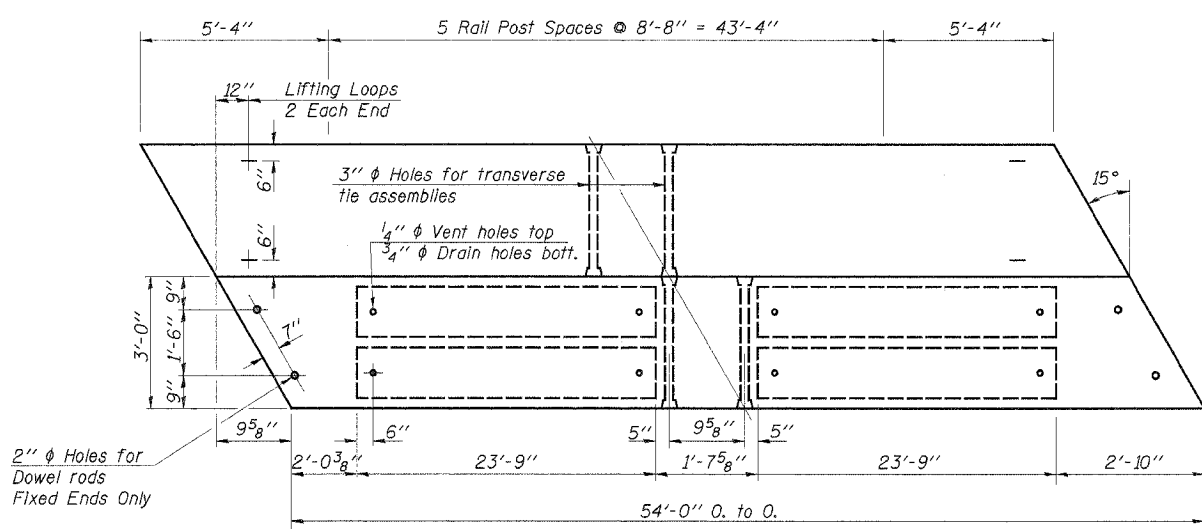
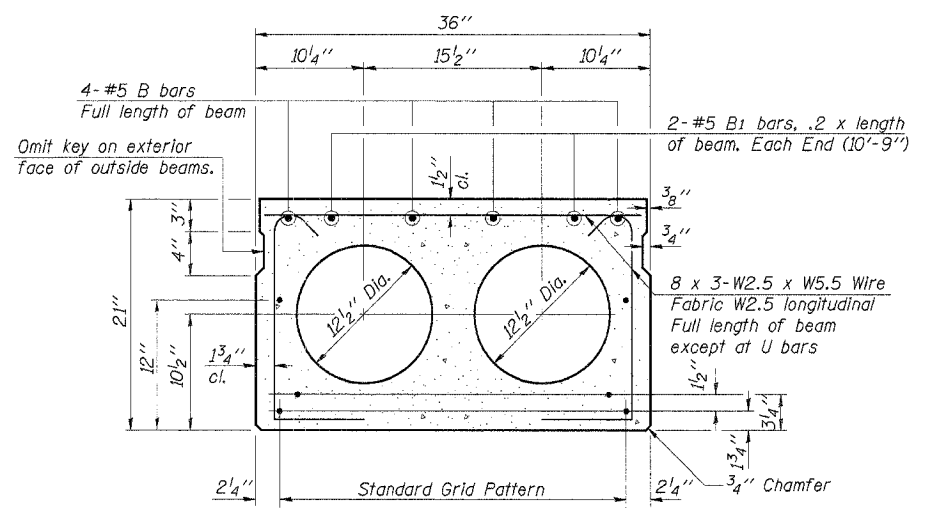
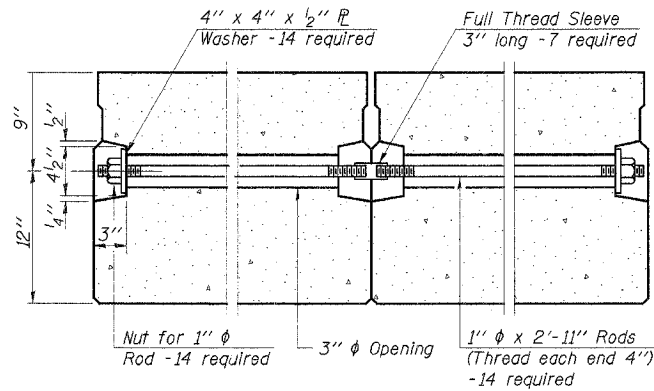
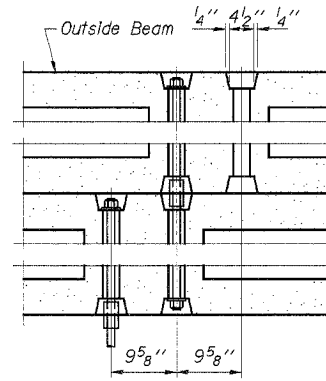
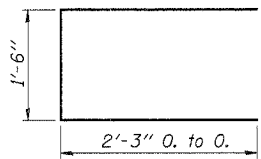
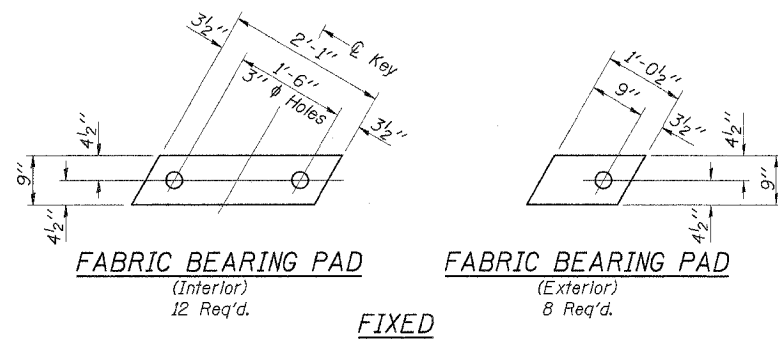
DESIGNED	S.F.M.
CHECKED	F.J.S.
DRAWN	S.A.P. & J.P.S.
CHECKED	F.J.S.

SUPERSTRUCTURE - SPANS 1 & 3

SECTION 04-04125-00-BR
GOOSE CREEK ROAD DISTRICT
PIATT COUNTY
STATION 15+24

4440 ASH GROVE SPRINGFIELD, IL 62711 (217) 793-8600 ossinc@famvid.com	OZYURT AND STONE, INC. CONSULTING ENGINEERS
JOB NO.: 0324	FILE: 0324SUP1.DGN
DATE: 01-05-05	

ROUTE NO.	SECTION	COUNTY	TOTAL SHEETS	SHEET NO.
T.R. 66	04-04125-00-BR	PIATT	15	8
ROAD DIST.	ILLINOIS		GOOSE CREEK	
CONTRACT NO. 91309				



* Note: After beams are in place, 1/4" holes shall be drilled into the substructure, and the dowel rods grouted in place and allowed to cure (Min. 24 Hrs.) prior to grouting shear key.

NOTES

Prestressing steel shall be uncoated high strength, low relaxation 7-wire strand, Grade 270. The nominal diameter shall be 1/2" and the nominal cross-sectional area shall be 0.153 sq. in. Lifting loops shall be 2 - 1/2" φ-270 ksi strands, as shown. The 1" φ rods in the transverse tie assembly shall be tightened to a snug fit and the threads set. Pockets that receive transverse tie bar on outside shall be filled with grout after transverse tie assembly is in place. Non prestressing steel shall conform to AASHTO M-31, M-42 or M-53 Grade 60. The bearing seat surfaces shall be adjusted by shimming to assure firm and even bearing. Two 1/8" fabric adjusting shims of the dimensions of the Exterior Bearing Pad shall be provided for each bearing. (40 Req'd.) Keyway surfaces shall be cleaned to remove form oil or other bond breaking material prior to shipment of the beams. Cleaning shall be done by sandblasting the keyway areas between top of the beam and the bottom edge of the key. Corrosion Inhibitor, as covered in the Special Provisions, shall be used in the concrete for precast prestressed concrete deck beams. Required Release Strength, f'ci, shall be 4,000 p.s.i. See Special Provisions for review and distribution of shop drawings. Rail post anchor devices shall be cast into outside beam as elsewhere specified.

BILL OF MATERIAL

Item	Unit	Quantity
Precast Prestressed Concrete Deck Beams (21" Depth)	Sq. Ft.	1,296

Estimated Total Weight (One Beam) = 31,370 Pounds

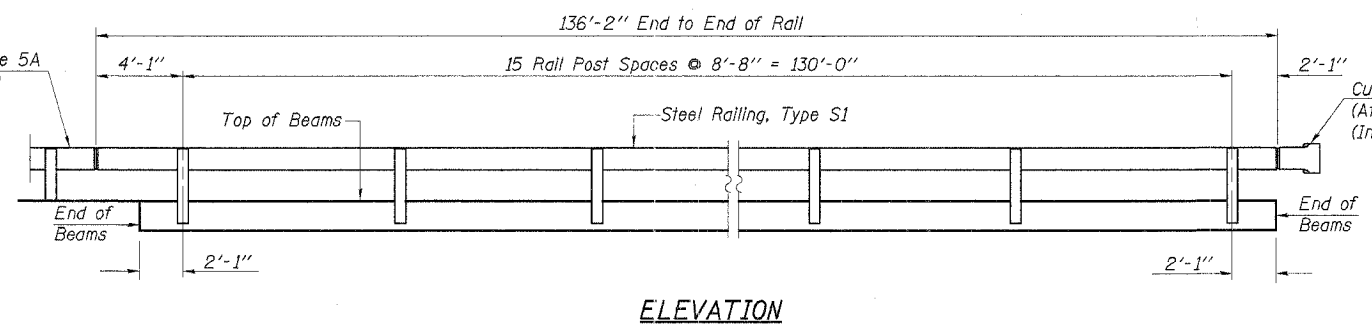
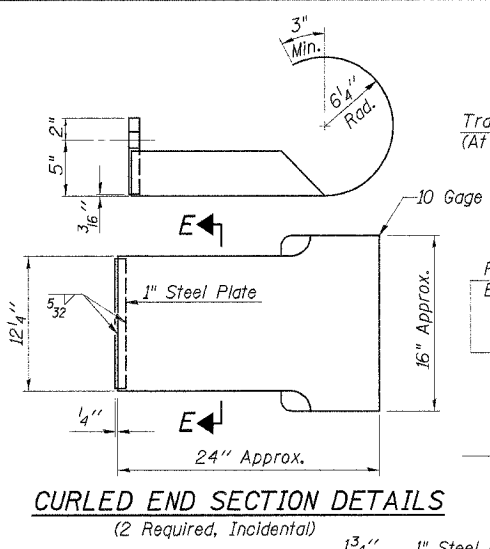
DESIGNED	S.F.M.
CHECKED	F.J.S.
DRAWN	S.A.P. & J.P.S.
CHECKED	F.J.S.
PD-3-R	9-1-03

SUPERSTRUCTURE - SPAN 2

SECTION 04-04125-00-BR
GOOSE CREEK ROAD DISTRICT
PIATT COUNTY
STATION 15+24

4440 ASH GROVE SPRINGFIELD, IL 62711 (217) 793-8600 oasinc@amvid.com	OZYURT AND STONE, INC. CONSULTING ENGINEERS	JOB NO.: 0324 FILE: 0324SUP2.DGN DATE: 01-05-05
---	---	---

ROUTE NO.	SECTION	COUNTY	TOTAL SHEETS	SHEET NO.
T.R. 66	04-04125-00-BR	PIATT	15	9
ROAD DIST.	ILLINOIS	GOOSE CREEK	CONTRACT NO. 91309	



NOTES

Hollow structural steel tubing shall conform to the requirements of ASTM designation A-500 Grade B Structural Steel Tubing and shall meet the longitudinal CVN requirements of 15 Ft.-Lbs. at 0°F.

All other steel shapes and plates shall conform to the requirements of AASHTO M-270, Grade 36 except posts and angles shall conform to AASHTO M-270, Grade 50.

Bolts, cap screws, and nuts shall conform to the requirement of ASTM designation A-307 except for high strength bolts, nuts and washers noted which shall conform to AASHTO M-164.

All bolts, nuts, cap screws, washers and lock washers shall be galvanized in accordance with AASHTO M-232.

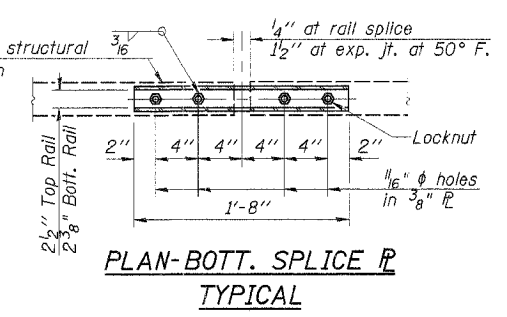
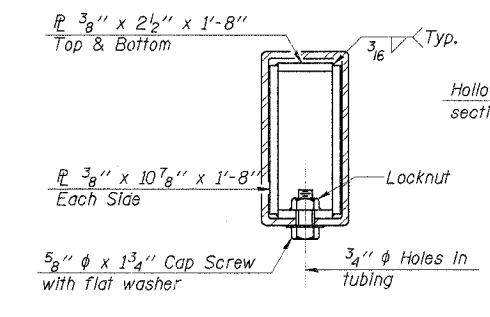
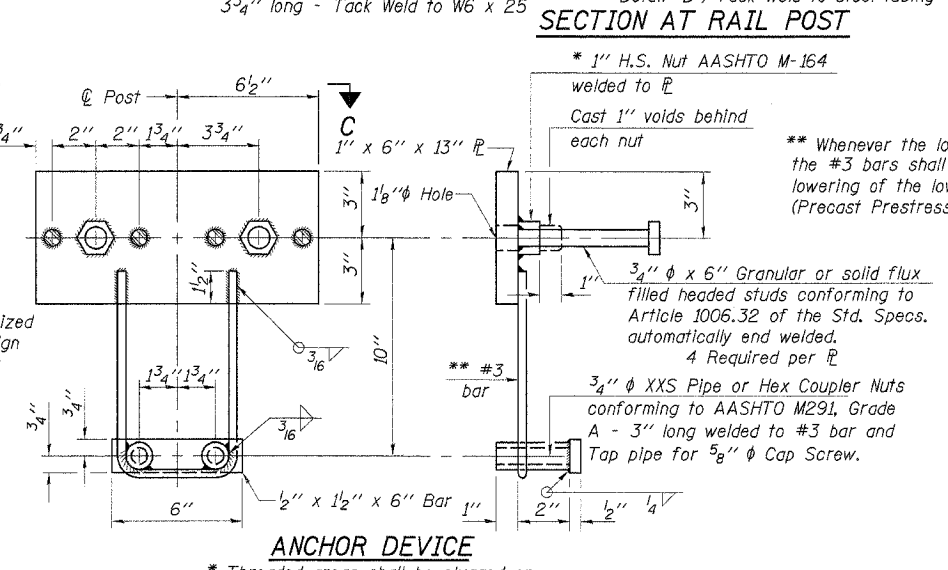
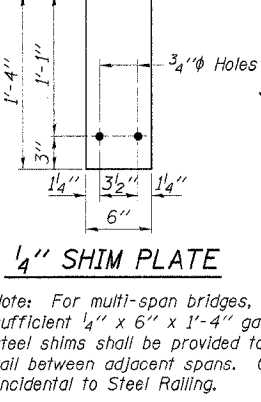
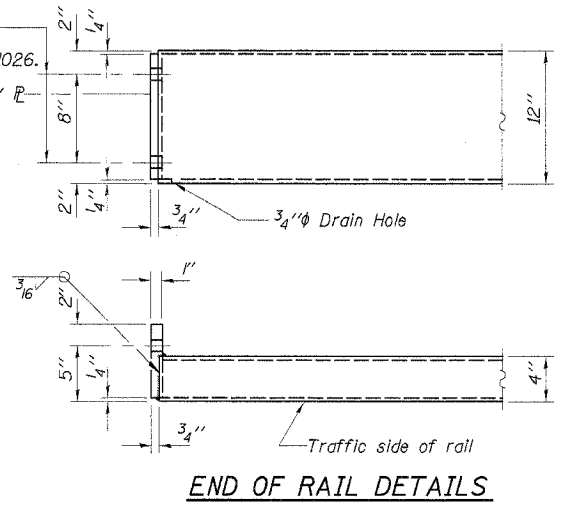
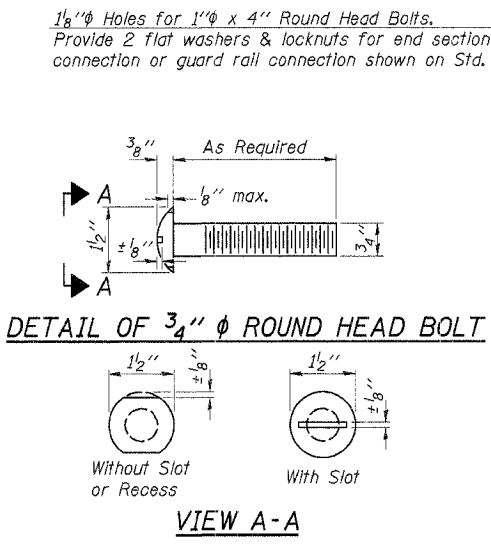
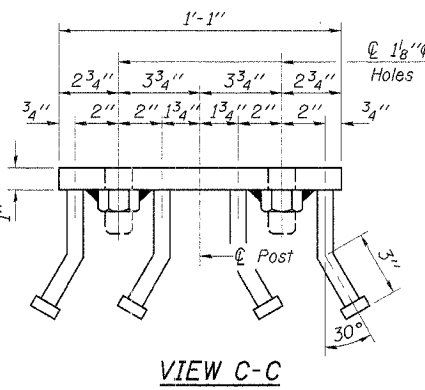
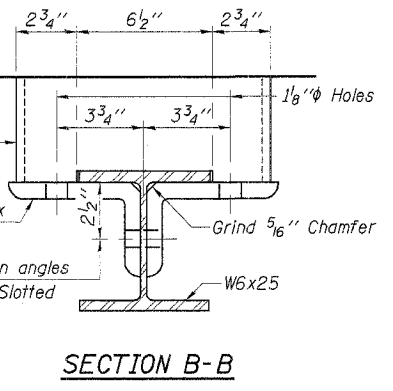
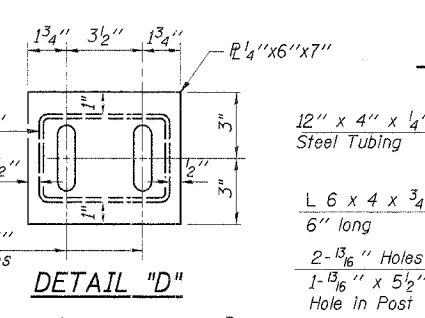
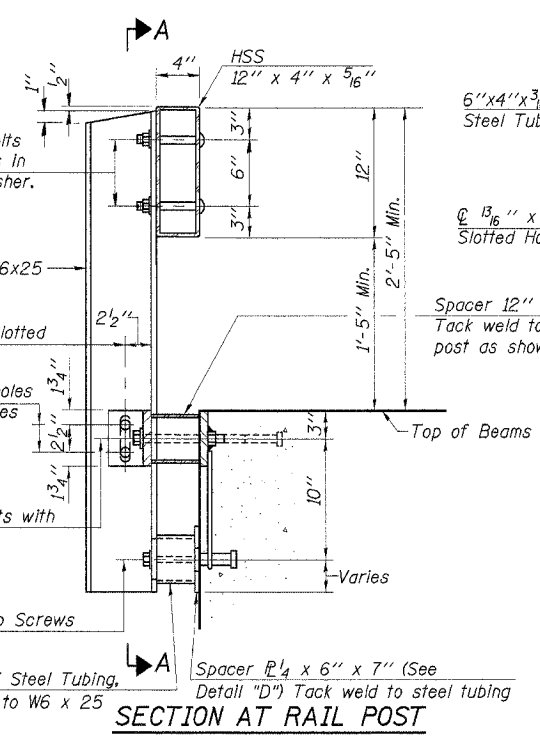
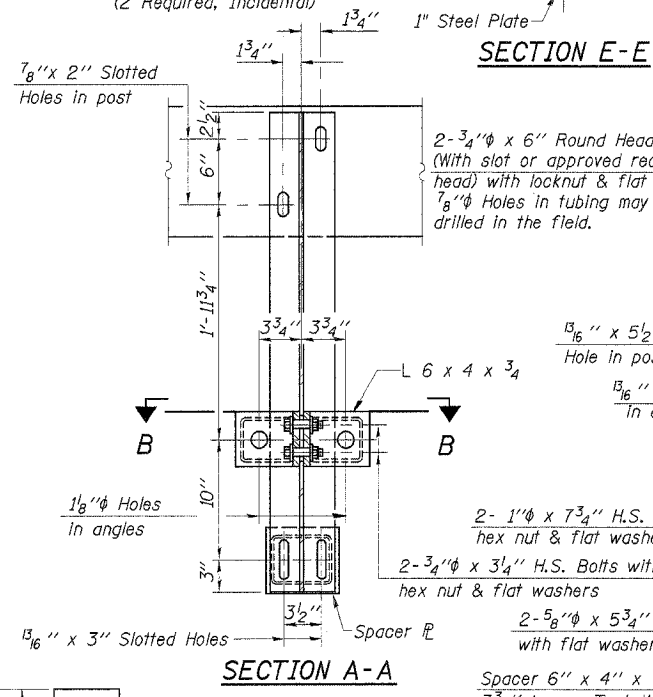
All posts, railing, rail splices, anchor devices, angles and spacers shall be galvanized after shop fabrication in accordance with AASHTO M-111 and ASTM A-385. Galvanized rail shall not be painted.

Railing shall be in accordance with Section 509 of the Standard Specifications, except as noted, and will be paid for at the contract unit price per foot for STEEL RAILING, TYPE S1.

All field drilled holes shall be coated with an approved zinc rich paint before erection.

The lower plate of the post spacer in contact with concrete shall receive two coats of asphalt paint conforming to Section 1060.07 Type II or place 1/2" fabric bearing pad between the post spacer and concrete.

The 3/4" high strength bolts used to connect the 6 x 4 x 3/4 angles to the post shall be tightened in accordance with Article 505.04(f)(2) of the Standard Specifications. The 1" high strength bolts connecting the angles to the concrete shall be tightened to a snug fit and given an additional 1/2 turn. The 5/8" cap screws in bottom of posts shall be tightened to a snug fit only.



BILL OF MATERIAL

Item	Unit	Quantity
Steel Railing, Type S1	Foot	273

STEEL RAILING, TYPE S1

SECTION 04-04125-00-BR
GOOSE CREEK ROAD DISTRICT
PIATT COUNTY
STATION 15+24

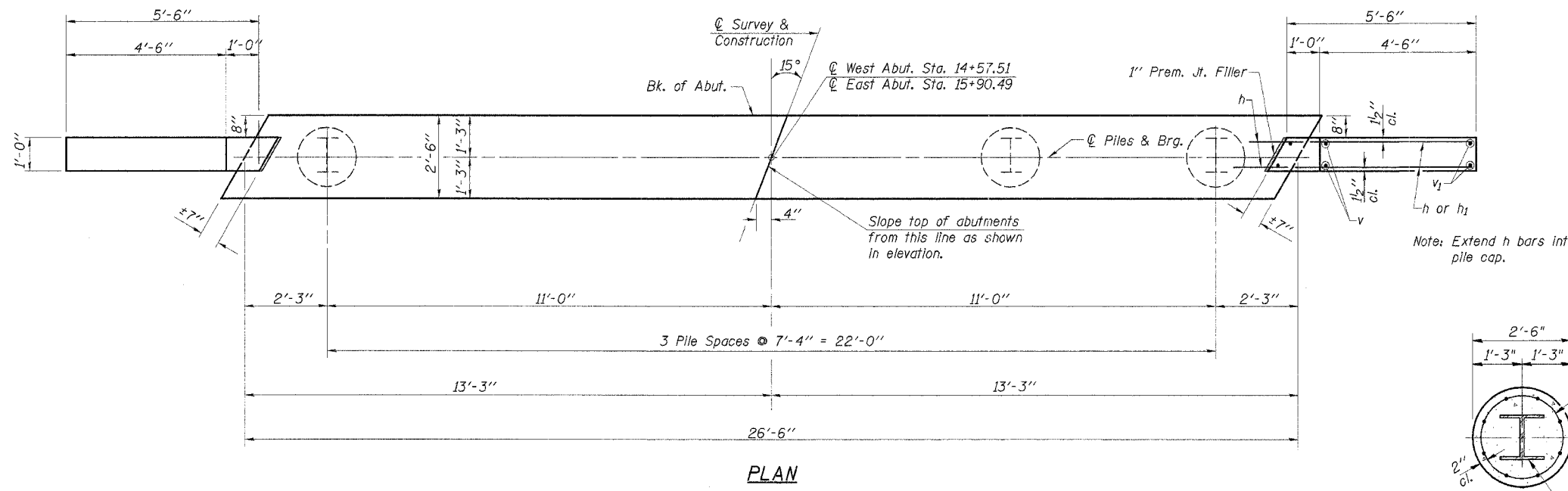
4440 ASH GROVE
SPRINGFIELD, IL 62711
(217) 793-8600
oasinc@amvld.com

OZYURT AND STONE, INC.
CONSULTING ENGINEERS

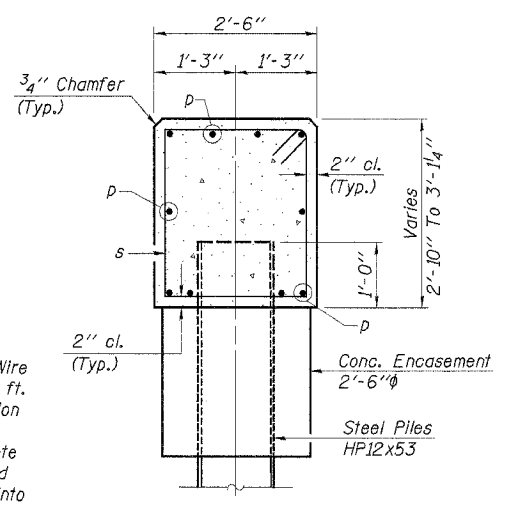
JOB NO.: 0324
FILE: 0324RAIL.DGN
DATE: 01-05-05

DESIGNED	S.F.M.
CHECKED	F.J.S.
DRAWN	S.A.P. & J.P.S.
CHECKED	F.J.S.

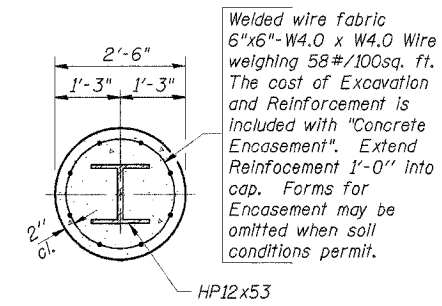
ROUTE NO.	SECTION	COUNTY	TOTAL SHEETS	SHEET NO.
T.R. 66	04-04125-00-BR	PIATT	15	10
ROAD DIST.	ILLINOIS		GOOSE CREEK	
CONTRACT NO. 91309				



PLAN

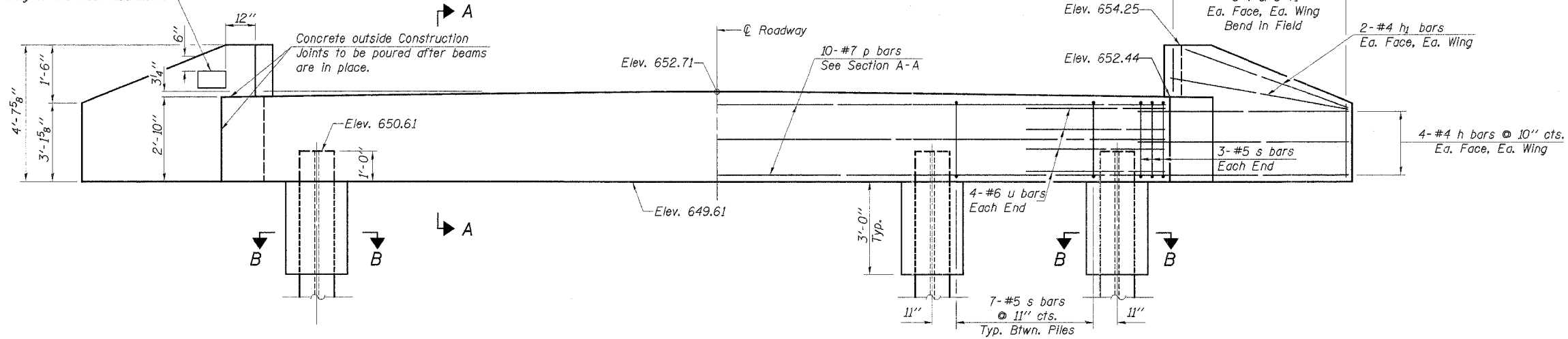


SECTION A-A



SECTION B-B

Name Plate shall be placed on the outside at the face of the South Wing of the West Abutment.



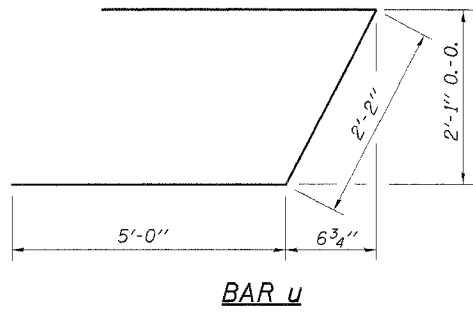
ELEVATION

2 ABUTMENTS
BILL OF MATERIAL

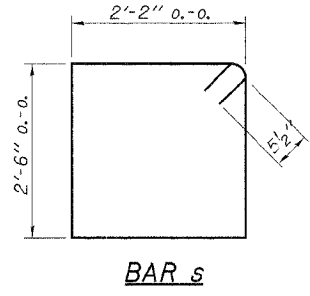
Bar	No.	Size	Length	Shape	
h	32	#4	7'-6"	—	
h1	16	#4	5'-3"	—	
p	20	#7	26'-2"	—	
s	54	#5	10'-3"	□	
u	16	#6	12'-2"	▤	
v	24	#4	4'-3"	—	
v1	24	#4	3'-9"	—	
Concrete Structures				Cu. Yd.	17.7
Reinforcement Bars				Pound	2290
Name Plates				Each	1
Test Pile Steel					
HP12x53				Each	1
Steel Piles HP12x53				Foot	210
Concrete Encasement				Cu. Yd.	4.4

PILE DATA

Type..... Steel HP12x53
 No. Req'd. (2 Abutts.)..... *8
 Design Capacity..... 34 Tons/Pile
 Drive Piles To..... 51 Tons/Pile
 Est. Length..... 30 Feet/Pile
 *Includes 1 Test Pile to be driven in a permanent location at the West Abutment.
 Test Pile to be driven to 77 Ton/Pile



BAR u



BAR s

DESIGNED	S.F.M.
CHECKED	F.J.S.
DRAWN	S.A.P. & J.P.S.
CHECKED	F.J.S.

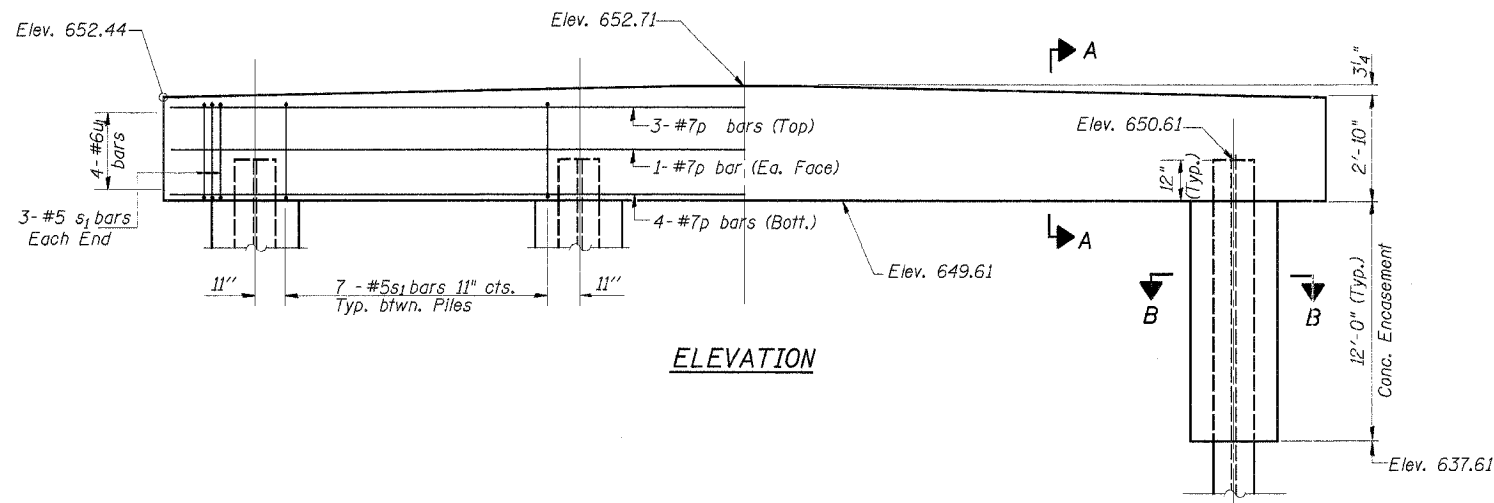
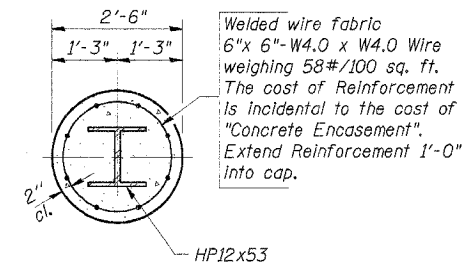
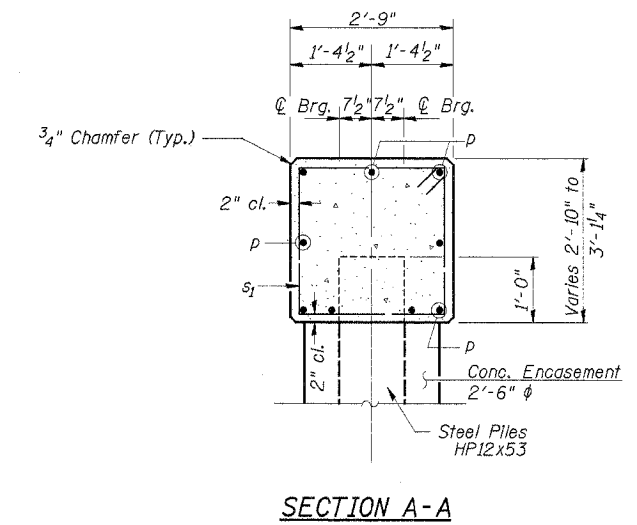
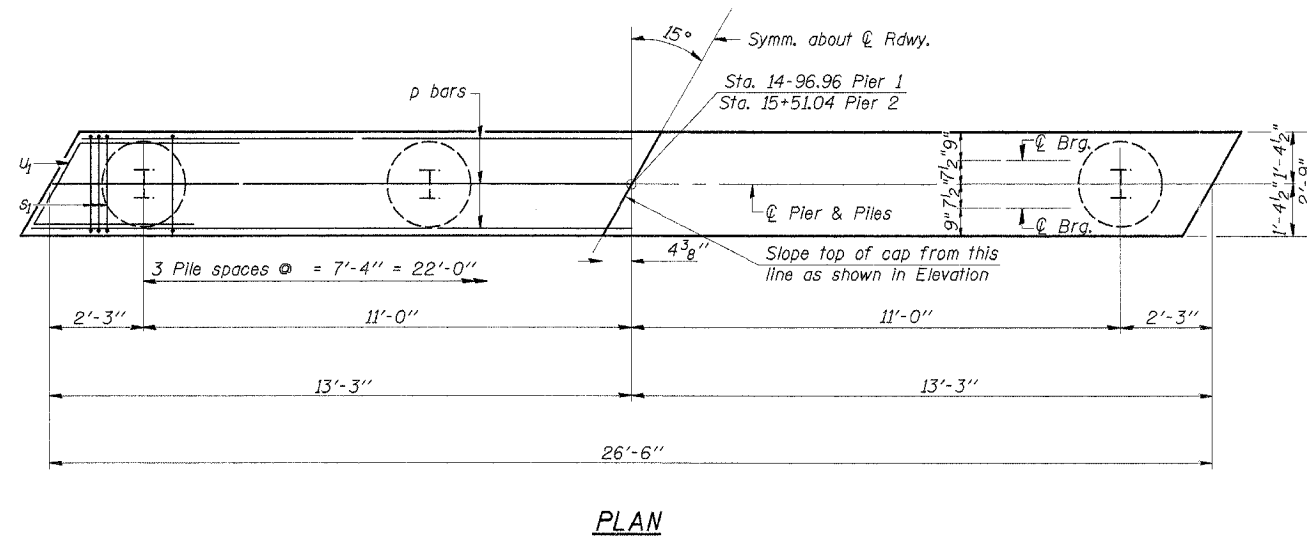
ABUTMENTS

SECTION 04-04125-00-BR
 GOOSE CREEK ROAD DISTRICT
 PIATT COUNTY
 STATION 15+24

4440 ASH GROVE SPRINGFIELD, IL 62711 (217) 793-8800 ossinc@amvic.com	OZYURT AND STONE, INC. CONSULTING ENGINEERS	JOB NO.: 0324 FILE: 0324ABTLDGN DATE: 01-05-05
---	---	--

ROUTE NO.	SECTION	COUNTY	TOTAL SHEETS	SHEET NO.
T.R. 66	04-04125-00-BR	PIATT	15	11
ROAD DIST.	ILLINOIS		GOOSE CREEK	
CONTRACT NO. 91309				

Note: All edges shall have standard 3/4" chamfer



PILE DATA

Type Steel HP12x53
Design Capacity 52 Tons/Pile
Drive Piles To 70 Ton/Pile
Est. Length 37 Foot/Pile

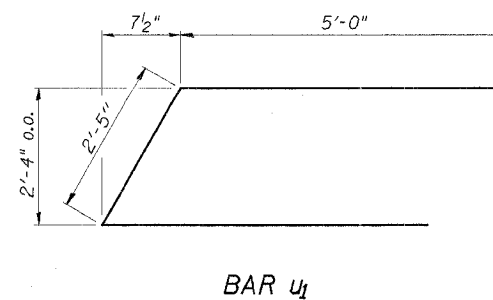
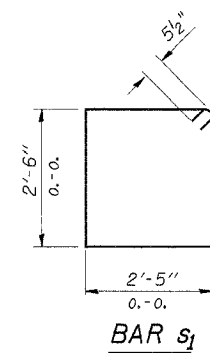
No. Req'd(2 Piers) *8

*Includes one Test Pile to be driven in a permanent location at Pier 2.
Test Pile to be driven to 100 Ton/Pile

BILL OF MATERIAL - 2 PIERS

BAR	NO.	SIZE	LENGTH	SHAPE
p	18	#7	26'-2"	
s ₁	54	#5	10'-9"	□
u ₁	16	#6	12'-5"	▬
Concrete Structures			Cu. Yd.	16.1
Reinforcement Bars			Pound	1870
Steel Piles HP12x53			Foot	259
Test Pile Steel HP12x53			Each	1
Conc. Encasement			Cu. Yd.	17.5

DESIGNED	S.F.M.
CHECKED	F.J.S.
DRAWN	S.A.P. & J.P.S.
CHECKED	F.J.S.



PIERS

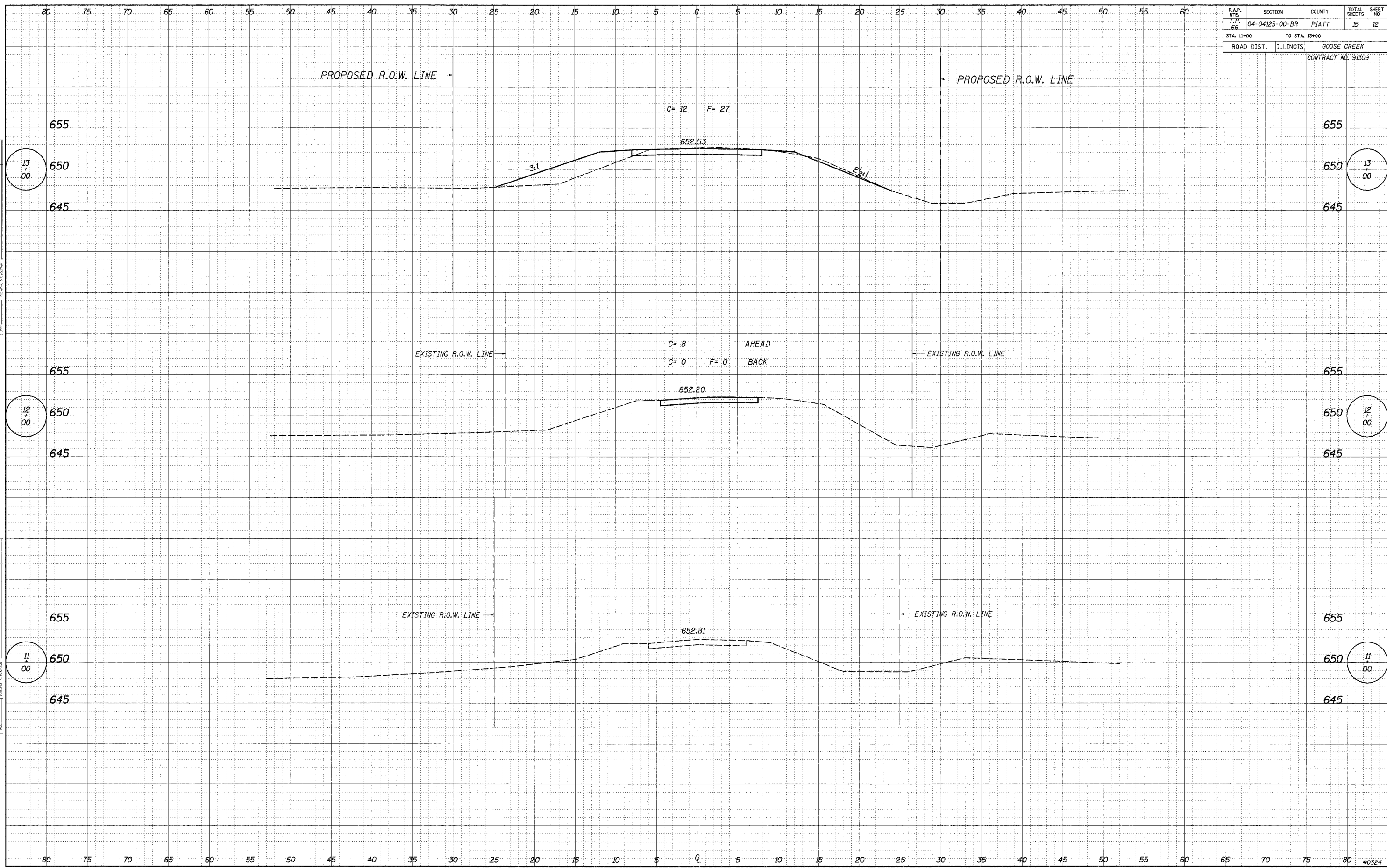
SECTION 04-04125-00-BR
GOOSE CREEK ROAD DISTRICT
PIATT COUNTY
STATION 15+24

4440 ASH GROVE SPRINGFIELD, IL 62711 (217) 793-8600 ossinc@famvic.com	OZYURT AND STONE, INC. CONSULTING ENGINEERS	JOB NO.: 0324 FILE: PIER-RT.DGN DATE: 01-05-05
--	---	--

F.A.P. RTE.	SECTION	COUNTY	TOTAL SHEETS	SHEET NO.
7. RT. 66	04-04125-00-BR	PIATT	15	12
STA. 11+00	TO STA. 13+00		GOOSE CREEK	
ROAD DIST.	ILLINOIS	CONTRACT NO. 91309		

DATE: _____
 BY: _____
 SURVEYED _____
 PLOTTED _____
 INK PLATE _____
 AREAS CHECKED _____
 NO. _____

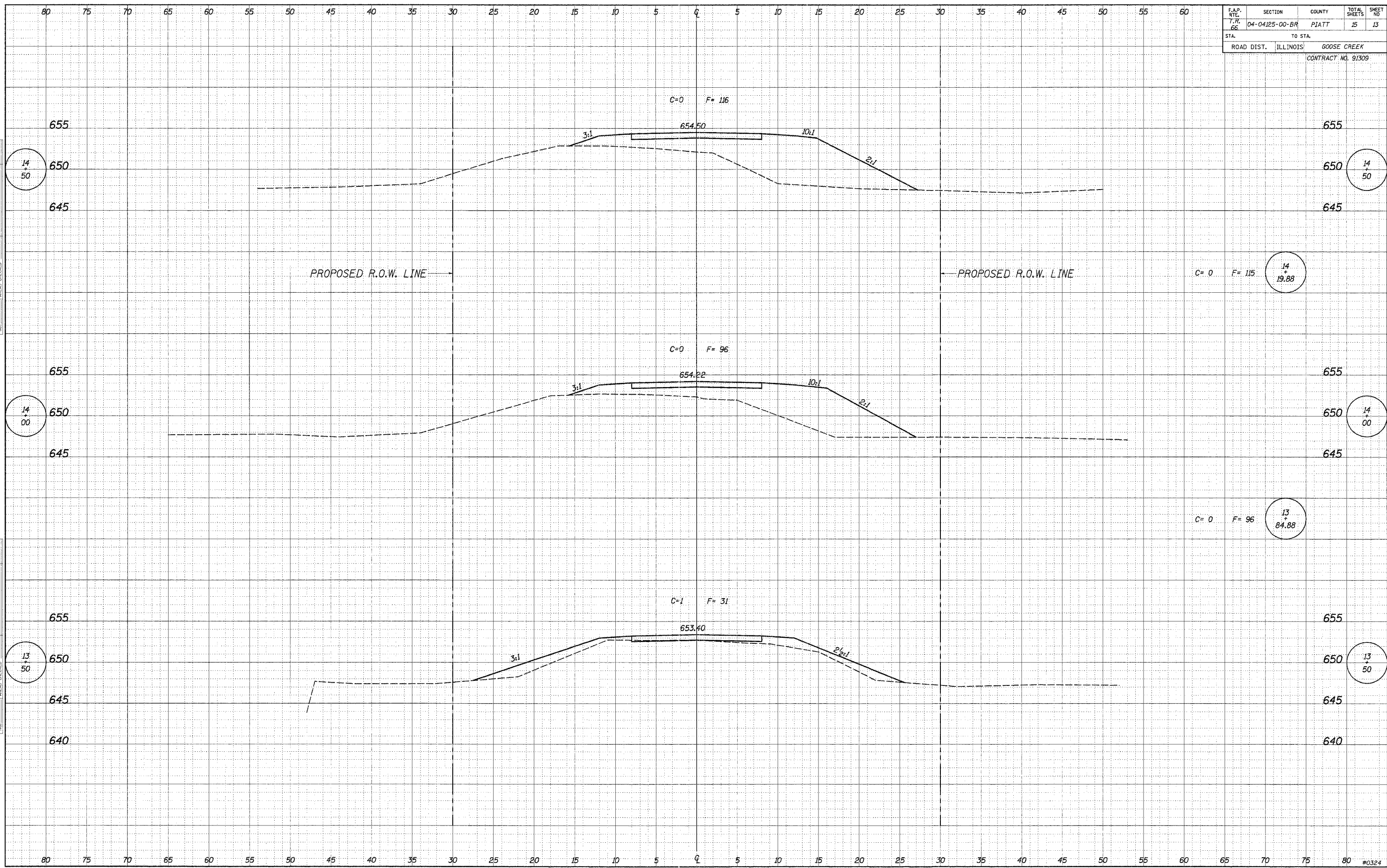
DATE: _____
 BY: _____
 SURVEYED _____
 PLOTTED _____
 INK PLATE _____
 AREAS CHECKED _____
 NO. _____



F.A.P. RTE.	SECTION	COUNTY	TOTAL SHEETS	SHEET NO.
T.M. 66	04-04125-00-BR	PIATT	15	13
STA.	TO STA.			
ROAD DIST.	ILLINOIS		GOOSE CREEK	
CONTRACT NO. 91309				

DATE	
BY	
FINAL SURVEY	
NOTED BOOK	
NO.	

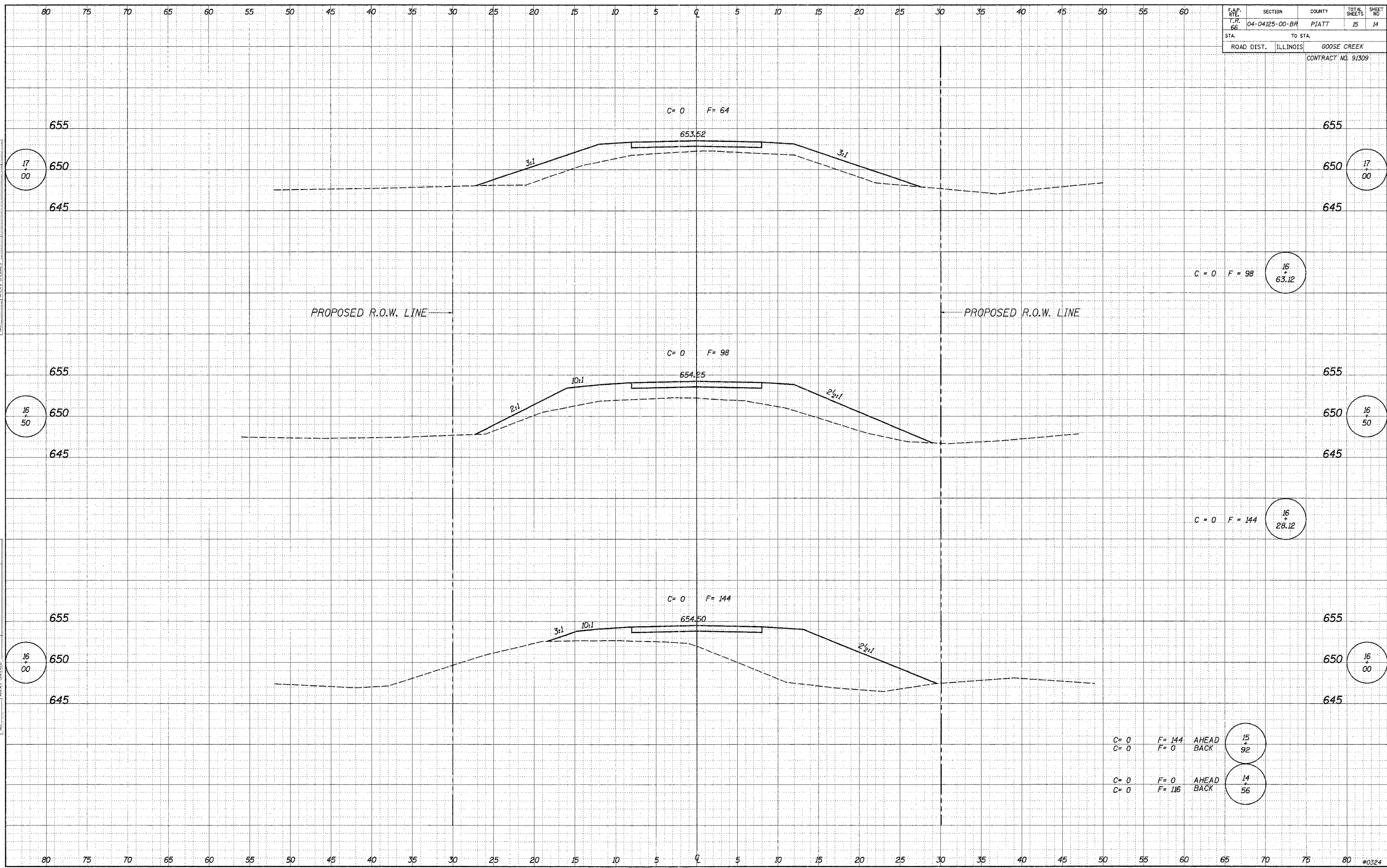
DATE	
BY	
ORIGINAL SURVEY	
NOTED BOOK	
NO.	



F.A.P. RTE.	SECTION	COUNTY	TOTAL SHEETS	SHEET NO.
66	04-04125-00-BR	PIATT	15	14
STA.		TO STA.		
ROAD DIST.		ILLINOIS		
		GOOSE CREEK		
CONTRACT NO. 91309				

BY _____ DATE _____
 SURVEYED _____
 PLOTTED _____
 NOTE BOOK _____
 AREAS CHECKED _____

BY _____ DATE _____
 SURVEYED _____
 PLOTTED _____
 NOTE BOOK _____
 AREAS CHECKED _____



C = 0 F = 98
 16 + 63.12

C = 0 F = 144
 16 + 28.12

C = 0 F = 144 AHEAD
 C = 0 F = 0 BACK
 15 + 92

C = 0 F = 0 AHEAD
 C = 0 F = 116 BACK
 14 + 56

F.A.P. RTE.	SECTION	COUNTY	TOTAL SHEETS	SHEET NO.
T.R. 66	04-04125-00-BR	PIATT	15	15
STA.		TO STA.		
ROAD DIST.	ILLINOIS	GOOSE CREEK		
CONTRACT NO. 91309				

FINAL SURVEY	DATE
NOTE BOOK NO.	BY
SURVEYED	DATE
PLOTTED	BY
TEMPLATE	
AREAS CHECKED	

ORIGINAL SURVEY	DATE
NOTE BOOK NO.	BY
SURVEYED	DATE
PLOTTED	BY
TEMPLATE	
AREAS CHECKED	

