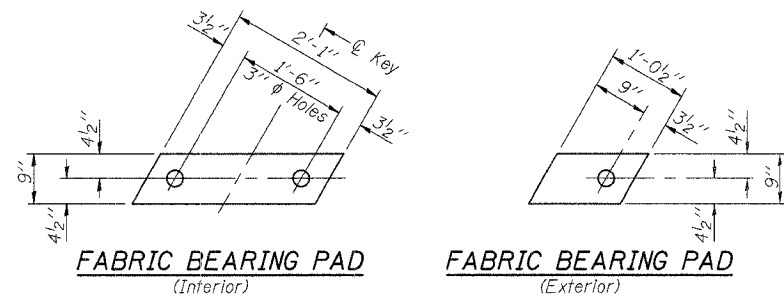
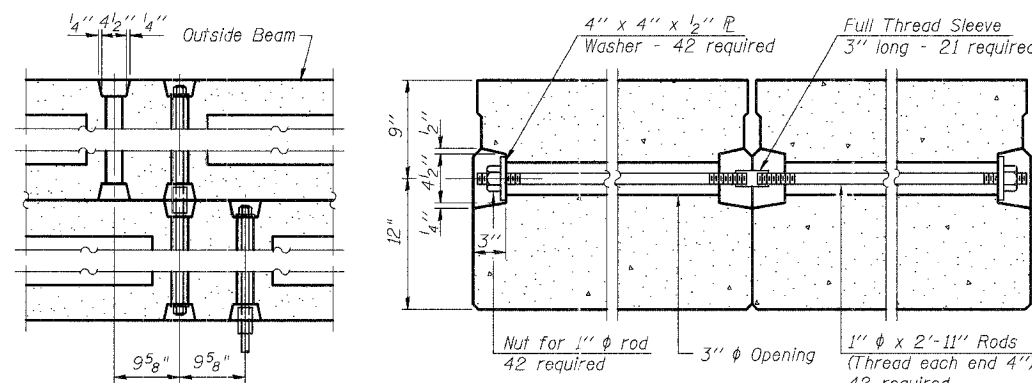


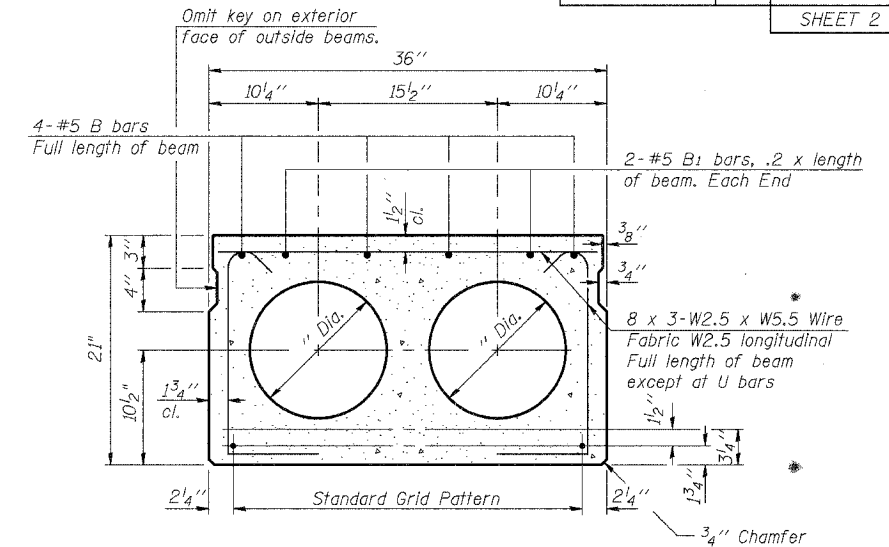
ROUTE NO.	SECTION	COUNTY	TOTAL SHEETS	SHEET NO.
TR 128	99-05117-00-BR	SHELBY	15	11
FED. ROAD DIST. NO. 7		ILLINOIS PROJECT	SHEET 2 of 6	



FIXED



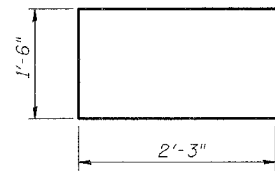
TYPICAL TRANSVERSE TIE ASSEMBLY



TYPICAL SECTION

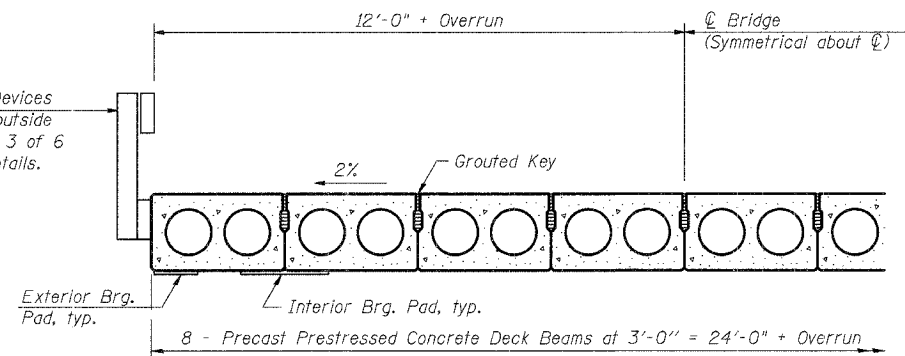
15 1/2" ϕ Strands, Each Strand Stressed to 30,900 Lbs.
7-Strands 1 3/4" up, 6-Strands 3/4" up, 9" up

Note:
Place strands symmetrically about ϕ of beam.

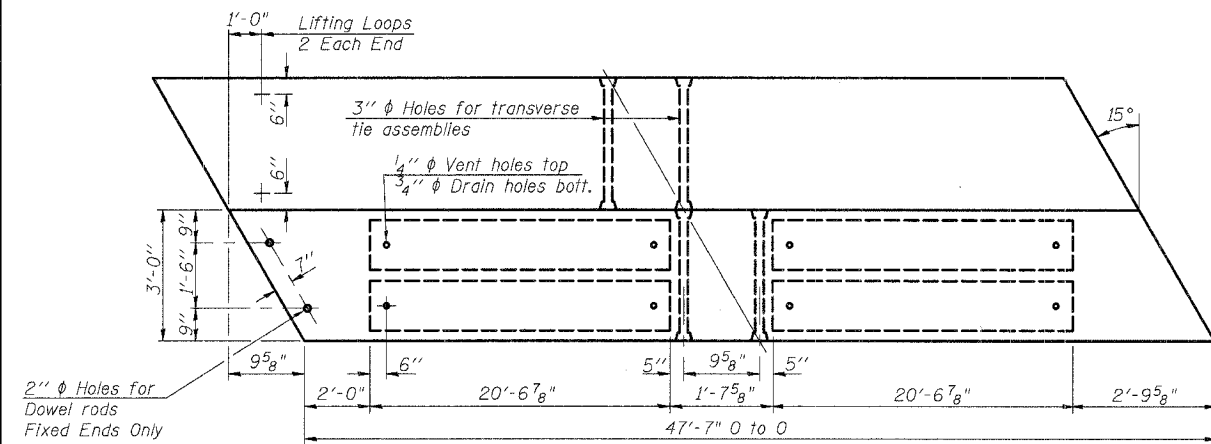


BAR U1

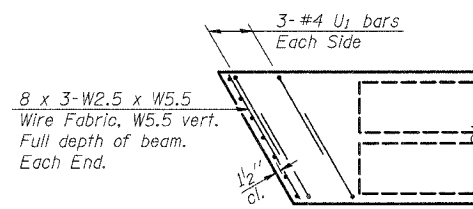
Roll Post Anchor Devices shall be cast into outside beams. See Sheet 3 of 6 for spacing and Details.



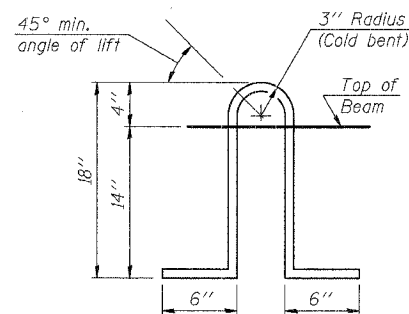
HALF CROSS SECTION



PLAN



END PLAN



LIFTING LOOP DETAIL

NOTES

Prestressing steel shall be uncoated high strength, low relaxation 7-wire strand, Grade 270. The nominal diameter shall be 1/2" and the nominal cross-sectional area shall be 0.153 sq. in. Lifting loops shall be 2 - 1/2" ϕ -270 ksi strands, as shown. The 1" ϕ rods in the transverse tie assembly shall be tightened to a snug fit and the threads set. Pockets that receive transverse tie bar on outside shall be filled with grout after transverse tie assembly is in place. Non prestressing steel shall conform to AASHTO M-31, M-42 or M-53 Grade 60. The bearing seat surfaces shall be adjusted by shimming to assure firm and even bearing. Two 1/8" fabric adjusting shims of the dimensions of the Exterior Bearing Pad shall be provided for each bearing. Keyway surfaces shall be cleaned to remove form oil or other bond breaking material prior to shipment of the beams. Cleaning shall be done by sandblasting the keyway areas between top of the beam and the bottom edge of the key. Required Release Strength, f'cl, shall be 4,000 p.s.i.

BILL OF MATERIAL
(For One Beam)

Bar	No.	Size	Length	Shape
B	8	#5	24'-9"	—
B1	4	#5	9'-6"	—
U1	12	#4	6'-0"	□
Precast Prestressed Conc. Deck Bms.			Sq. Ft.	3426

BEAM DETAILS

T.R. 128 OVER MITCHELL CREEK
SECTION 99-05117-00-BR
SHELBY COUNTY
S.N. 087-3520
STA. 9+94.00

ie consultants

DESIGNED: G.B.M. CHECKED: D.R.B.
DRAWN: J.P.H. DATE: 10/20/04