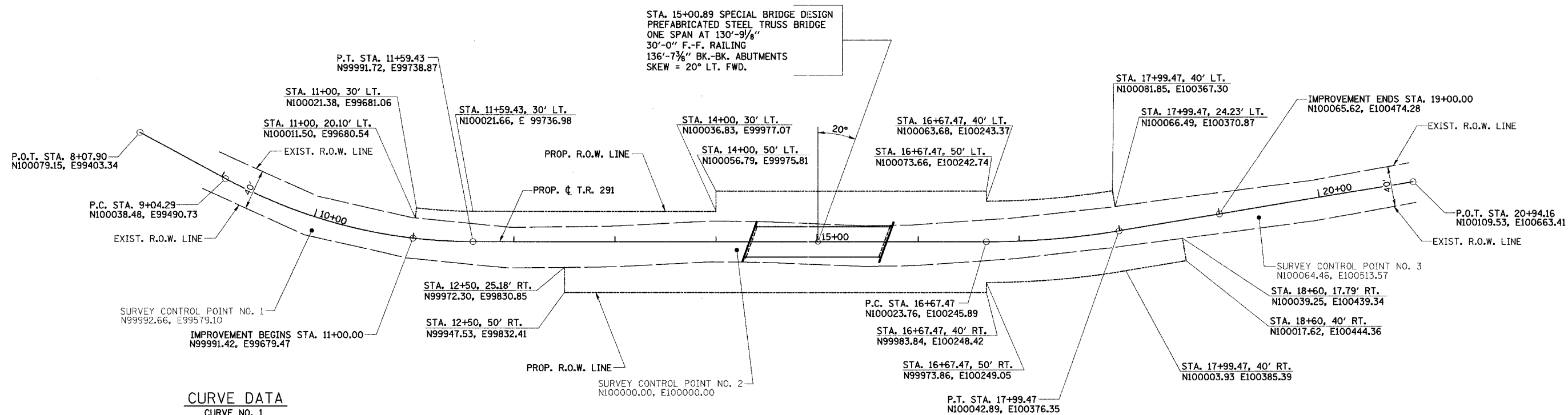


RTE.	SECTION	COUNTY	TOTAL SHEETS	SHEET NO.
T.R. 291	94-14131-00-BR	VERMILION	12	3A
STA. 8+07.90 TO STA. 20+94.16				
FED. ROAD DIST. NO.	ILLINOIS	PROJECT	BROS-183(86)	
		CONTRACT NO. 91323		
HORZ. SCALE IN FEET		1" = 50'		

PLAN	DATE
SURVEYED	
PLOTTED	
CHECKED	
BY	
NO.	

PROFILE	DATE
SURVEYED	
PLOTTED	
CHECKED	
BY	
NO.	



CURVE DATA

CURVE NO. 1
 P.I. STA. 10+34.57
 $\Delta = 28^\circ 34' 23''$ (LT.)
 $D = 11^\circ 11' 57''$
 $T = 130.28'$
 $R = 511.61'$
 $L = 255.14'$
 $E = 16.33'$
 P.C. STA. 9+04.29
 P.T. STA. 11+59.43

PROPOSED STRUCTURE LAYOUT

WEST ABUTMENT	EAST ABUTMENT
BK. OF W. ABUT. STA. 14+32.58 N100008.95, E10011.47	BK. OF E. ABUT. STA. 15+69.20 N100017.56, E100147.82
C. BRG. W. ABUT. STA. 14+35.51 N100009.13, E100014.40	C. BRG. E. ABUT. STA. 15+66.27 N100017.38, E100144.90
FACE OF W. ABUT. STA. 14+37.10 N100009.23, E100015.99	FACE OF E. ABUT. STA. 15+64.68 N100017.28, E100143.31

CURVE DATA

CURVE NO. 2
 P.I. STA. 17+33.62
 $\Delta = 9^\circ 27' 13''$ (LT.)
 $D = 7^\circ 09' 43''$
 $T = 66.15'$
 $R = 800.00'$
 $L = 132.00'$
 $E = 2.73'$
 P.C. STA. 16+67.47
 P.T. STA. 17+99.47
 S.E. = 4.0%
 S.E. ATTAINED STA. 16+00.80
 TO STA. 17+00.80
 S.E. REMOVED STA. 17+66.14
 TO STA. 18+66.14

NOTE:
 FOR TIE POINTS AND BENCHMARK LOCATION,
 SEE SHEET 3 OF 12.