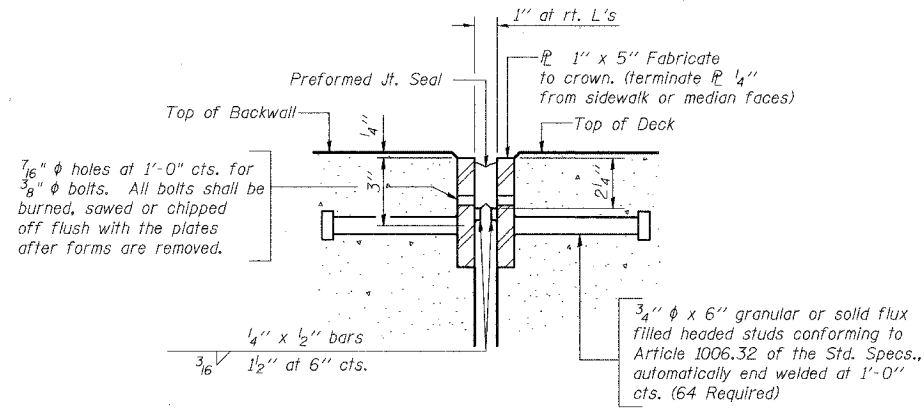
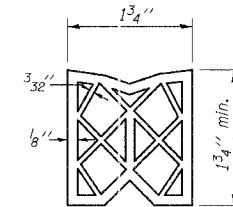


ROUTE NO.	SECTION	COUNTY	TOTAL SHEETS	SHEET NO.
T.R. 291	94-14131-00-BR	VERMILION	12	12
FED. ROAD DIST. NO.		ILLINOIS PROJECT BROS-183(86)	CONTRACT NO. 91323	



SECTION THRU FIXED PREFORMED JOINT SEAL



PREFORMED JOINT SEAL

WEST ABUTMENT FIXED JOINT DETAILS

(Preformed Joint Seal 1 3/4")

GENERAL NOTES

Furnish PJS steel plates in segments of 20 feet maximum length. Maximum space between installed segments shall be 3/16". Seal space with silicone sealant suitable for structural steel.
The manufacturer's recommended installation methods shall be followed.

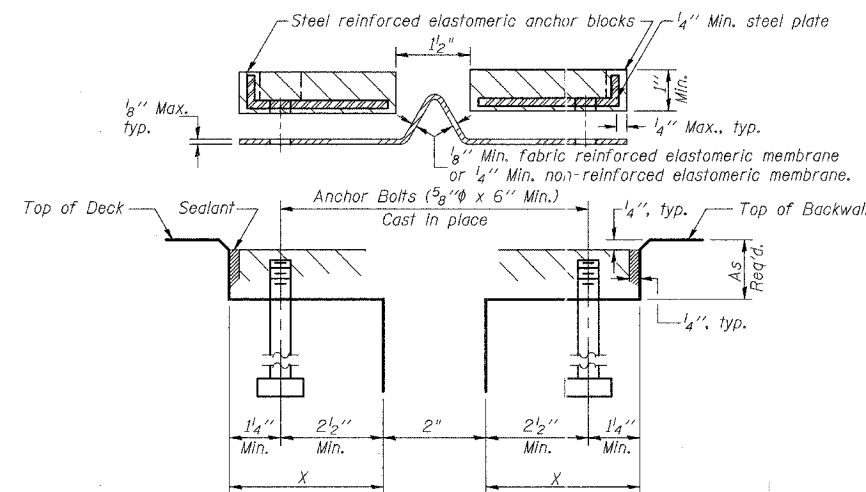
BILL OF MATERIAL

Item	Unit	Total
Preformed Joint Seal 1 1/4"	Foot	32
Neoprene Expansion Joint 2"	Foot	32
Furnishing and Erecting Structural Steel	Pound	910

INSTALLATION NOTES

- Install continuous seal in Bridge Deck and Backwall.
- Install anchor blocks as indicated.

NOTE A: Maximum spacing of anchor bolts shall be 12" centers.



CROSS SECTION

EAST ABUTMENT EXPANSION JOINT DETAILS

(Neoprene Expansion Joint 2")

EXPANSION JOINT DETAILS

Date	Designed GAC	TR 291 OVER STONEY CREEK	Sheet No.
Revisions	Drawn GAC	SECTION 94-14131-00-BR	3
	Checked KWB	VERMILION COUNTY	
	Approved KWB	OAKWOOD TOWNSHIP	
		STA. 15+00.89	
Prepared by: URS 3040 North University Avenue		PROP. STR. NO. 092-3488	of 3
Decatur, IL 62526			URS Job No. 36430707

GENERAL NOTES

Continuous Seal Neoprene Expansion Joint shall consist of molded anchor blocks of elastomer and steel, field assembled over continuous lengths of elastomeric membrane.
The elastomeric membrane shall be pre-molded with a single or a double upward convolution that will have a "memory" to return to its molded position upon joint closure.
The convolution length shall be such that the extended length will not be greater than the manufactured length when the joint is fully expanded in its design range and will not protrude above the anchor blocks when the joint is fully compressed.
Joint openings shall be adjusted according to Article 503.10(c) of the Standard Specifications when the deck is poured at an ambient temperature other than 50° F.
The parapet and roadway membrane shall be made continuous by an approved vulcanizing process. Lapping will not be permitted.
Provide additional (X) bars in the deck at the neoprene expansion joint in accordance with the IDOT Bridge Manual.