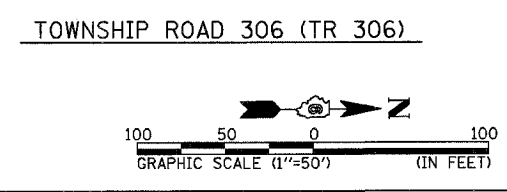
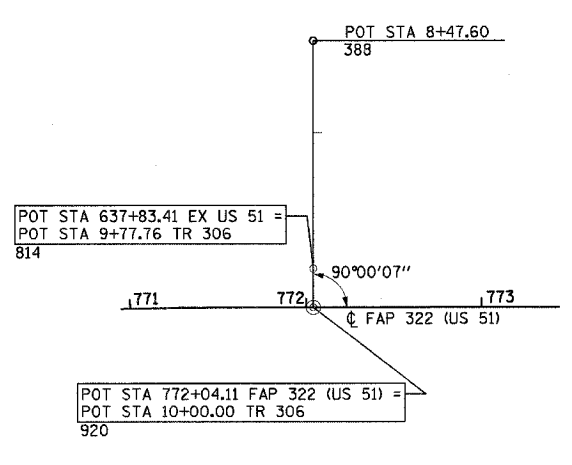
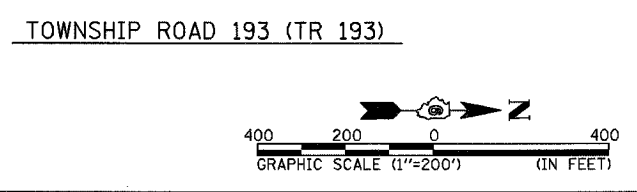
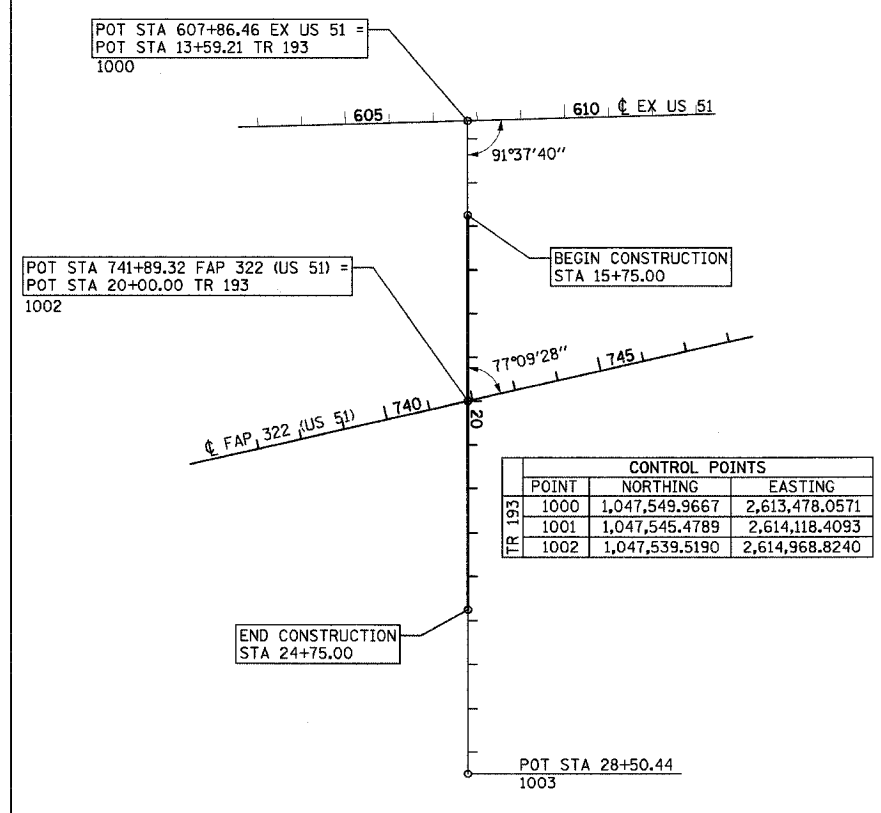
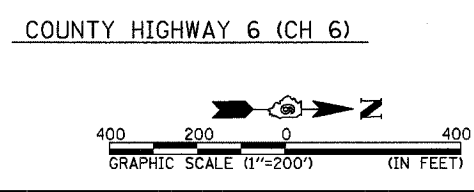
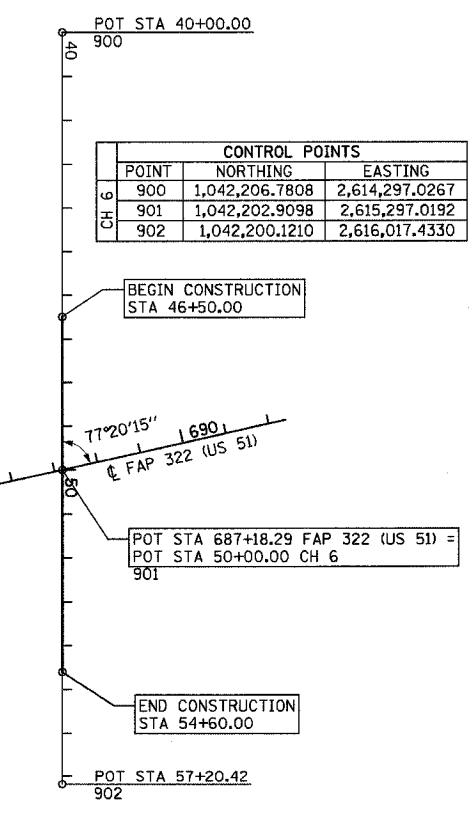
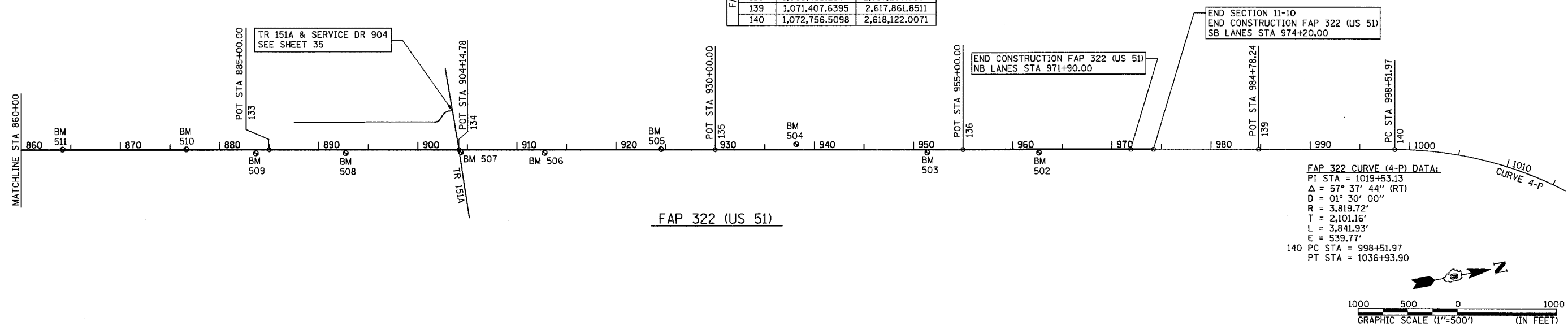


F.A.P. RTE.	SECTION	COUNTY	TOTAL SHEETS	SHEET NO.
322	11-10	CHRISTIAN	310	33
STA.		TO STA.		
FED. ROAD DIST. NO.		ILLINOIS FED. AID PROJECT		

CONTROL POINTS		
POINT	NORTHING	EASTING
133	1,061,609.9627	2,615,972.1778
134	1,063,490.0950	2,616,334.7980
135	1,066,028.5307	2,616,824.3850
136	1,068,483.2907	2,617,297.8334
139	1,071,407.6395	2,617,861.8511
140	1,072,756.5098	2,618,122.0071



BENCHMARKS		
MARK	ELEVATION	DESCRIPTION
BM #502	616.35	60d NAIL IN PP - 0.86 MILES SOUTH OF SHELBY COUNTY LINE STA 962+65.15, 32.35' RT (PR US 51) STA 828+44.60, 63.85' RT (EX US 51)
BM #503	619.59	60d NAIL IN PP - 1.09 MILES SOUTH OF SHELBY COUNTY LINE STA 951+39.10, 29.85' RT (PR US 51) STA 817+18.60, 60.35' RT (EX US 51)
BM #504	618.07	CHSLD " + " IN CENTER OF WEST HW - 1.34 MILES SOUTH OF SHELBY COUNTY LINE - STA 938+16.50, 54.15' LT (PR US 51) STA 803+96.00, 24.45' LT (EX US 51)
BM #505	618.73	CHSLD " □ " ON NORTH SIDE OF EAST HW - 1.60 MILES SOUTH OF SHELBY COUNTY LINE - STA 924+52.65, 5.60' LT (PR US 51) STA 790+32.00, 23.35' RT (EX US 51)
BM #506	620.25	60d NAIL IN PP - 1.82 MILES SOUTH OF SHELBY COUNTY LINE STA 912+78.55, 32.75' RT (PR US 51) STA 778+58.00, 61.05' RT (EX US 51)
BM #507	619.84	CHSLD " □ " IN CENTER OF NORTH HW - 1.98 MILES SOUTH OF SHELBY COUNTY LINE - STA 904+34.55, 24.25' RT (PR US 51) STA 770+13.90, 52.10' RT (EX US 51)
BM #508	623.43	60d NAIL IN PP - 2.20 MILES SOUTH OF SHELBY COUNTY LINE STA 892+71.80, 34.20' RT (PR US 51) STA 758+51.30, 61.05' RT (EX US 51)
BM #509	628.46	60d NAIL IN PP - 2.37 MILES SOUTH OF SHELBY COUNTY LINE STA 883+66.90, 35.70' RT (PR US 51) STA 749+46.30, 61.75' RT (EX US 51)
BM #510	624.98	CHSLD " □ " IN CENTER OF EAST HW - 2.50 MILES SOUTH OF SHELBY COUNTY LINE - STA 876+65.25, 4.85' LT (PR US 51) STA 742+44.60, 20.80' RT (EX US 51)
BM #511	624.41	CHSLD " □ " IN CENTER OF EAST HW - 2.74 MILES SOUTH OF SHELBY COUNTY LINE - STA 864+18.25, 4.55' LT (PR US 51), ELEV = 624.41 STA 729+97.90, 21.00' RT (EX US 51)

REVISIONS		ILLINOIS DEPARTMENT OF TRANSPORTATION ALIGNMENT & BENCHMARK DATA SHEET 2 OF 3 FAP 322 (US 51) SECTION 11-1 CHRISTIAN COUNTY
NAME	DATE	
		SCALE: AS NOTED DATE: 3/17/05 DRAWN BY: BGJ CHECKED BY: SEB